

TV VERTICAL POWER OUTPUT CIRCUIT—YD7231

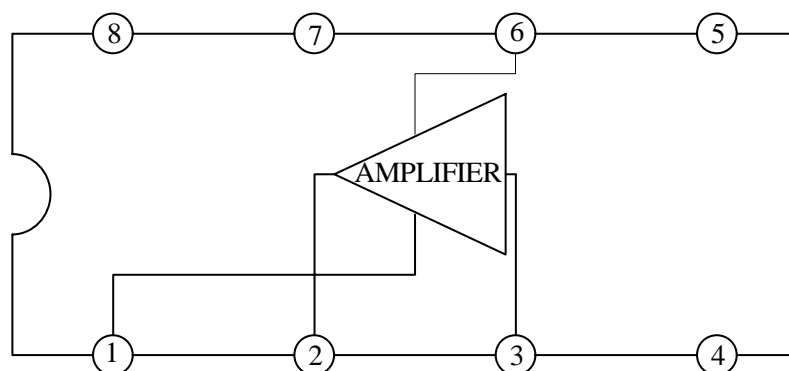
DESCRIPTION

The YD7231 is a monolithic integrated circuit designed as a TV vertical power output circuit in small screen sized televisions. When combined with YD5151, a suitable vertical deflection circuit can be constructed.

FEATURES

- *Operating voltage 1.8 To 15V
- *Low quiescent current
- *High power capability
- *Low crossover distortion
- *Soft clipping

BLOCK DIAGRAM



www.DataSheet.in

WuXi YouDa Electronics Co., Ltd

Add: No.5 Xijin Road, National Hi-Tech Industrial Development Zone, Wuxi Jiangsu China

Tel: 86-510-5205117 86-510-5205108 Fax: 86-510-5205110 Website: www.e-youda.com

SHENZHEN OFFICE Tel : 86-755-83740369 13823533350 Fax : 86-755-83741418

ABSOLUTE MAXIMUM RATINGS (Tamb=25)

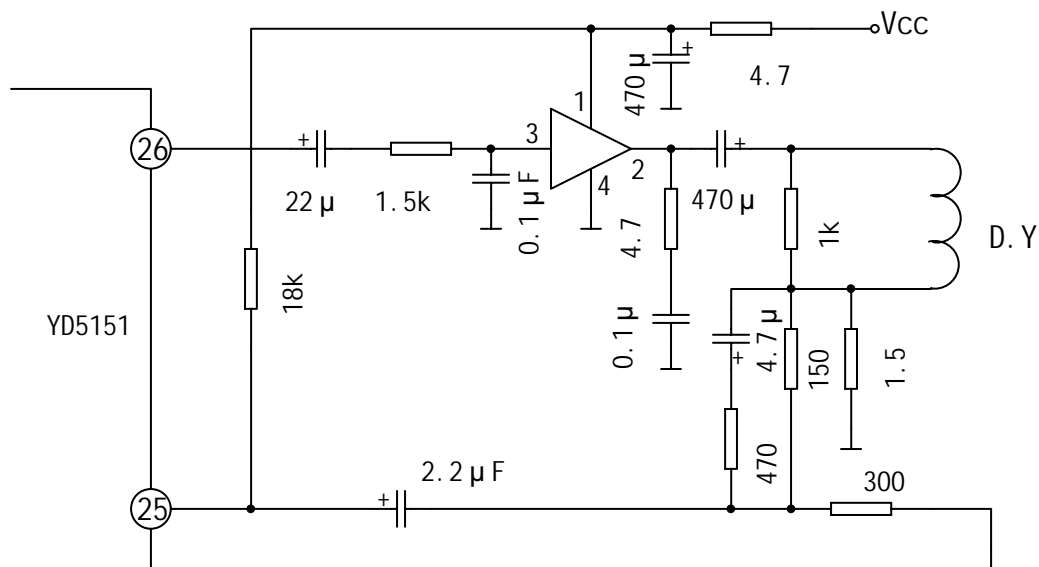
| PARAMETER | SYMBOL | VALUE | UNIT |
|-------------------------|------------------|-------------|------|
| Supply Voltage | Vcc | 16 | V |
| Output Peak Current | P _D | 1 | A |
| Total Power Dissipation | P _t | 4 to 1.25 | W |
| Junction Temperature | T _j | -40 to +150 | |
| Storage Temperature | T _{stg} | -40 to +150 | |

ELECTRICAL CHARACTERISTICS (Tamb=25 , Unless otherwise specified)

| PARAMETER | SYMBOL | TEST CONDITIONS | MIN | TYP | MAX | UNIT |
|---------------------------|-----------------|--|-----|-----|-----|------|
| Quiescent Circuit Voltage | V _o | Vcc=3V | | 1.2 | | V |
| | | | | 2.7 | | |
| Input Bias Current | I _B | | | 100 | | nA |
| Supply Voltage | Vcc | | 1.8 | | 15 | V |
| Quiescent Current | Icc | | | 3.6 | 9 | mA |
| Saturation Voltage | Vsat1 | I _o =100mA | | | 0.5 | V |
| | Vsat2 | I _o =-100mA | | | 1 | |
| Distortion | THD | P _o =0.2W, R _o =8 , f=1kHz | | 0.3 | | % |
| Close Loop Voltage Gain | A _v | f=1kHz | | 38 | | dB |
| Input Resistance | Z _i | f=1kHz | 100 | | | k |
| Input Noise Voltage | V _{NI} | Rs=10k , | | 2 | | μ V |
| | | Rs=10k , BPF=22Hz~22kHz | | 3 | | |
| Ripple Rejection | Srip | | 24 | 30 | | dB |

www.DataSheet.in

APPLICATION CIRCUIT



OUTLINE DRAWING

