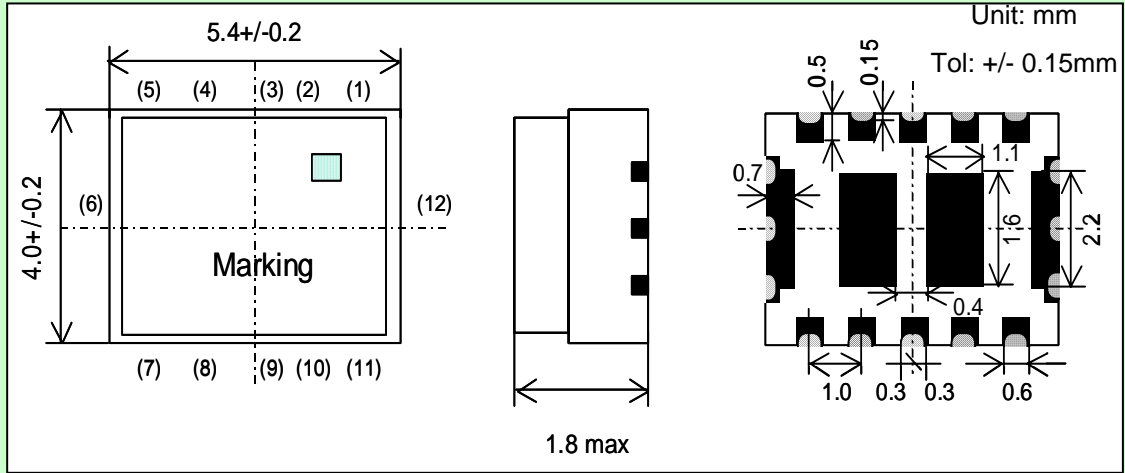


NTK Antenna Switch Module

Part Number: LMG002S-5008C

Application: EGSM/DCS

Mechanical Outline



< Pinout >

Terminal No.	Terminal Name	Terminal No.	Terminal Name
(1)	Rx (DCS)	(7)	GND
(2)	Vc1	(8)	ANT
(3)	Tx (DCS)	(9)	GND
(4)	GND	(10)	Rx (EGSM)
(5)	Tx (EGSM)	(11)	Vc2
(6)	GND	(12)	GND

< Logic >

	Vc1	Vc2	Current typ.
EGSM Tx mode	Low	High	7 mA
DCS Tx mode	High	Low	7 mA
EGSM DCS Rx mode	Low	High	0 mA

* high ; 2.5~3.0 V, Low ; 0 V



NGK Spark Plug Co., LTD.

2808 Iwasaki, Komaki-shi, Aichi, Japan 485-8510

NTK Antenna Switch Module**Part Number: LMG002S-5008C****Electrical Specifications****EGSM**

T=25 deg C

Mode	Port	Band (MHz)	Parameter	min	typ.	max	unit
Tx	Tx -> ANT	880~915	Insertion Loss		1.10	1.3	dB
		880~915	VSWR (Tx port)		1.10	1.8	
		1760~1830	Attenuation $2f_0$	30	36		dB
		2640~2745	Attenuation $3f_0$	25	30		dB
	Tx -> Rx	880~915	Isolation	20	29		dB
Rx	ANT -> Rx	925~960	Insertion Loss		0.95	1.2	dB
		925~960	VSWR (Rx port)		1.20	1.8	

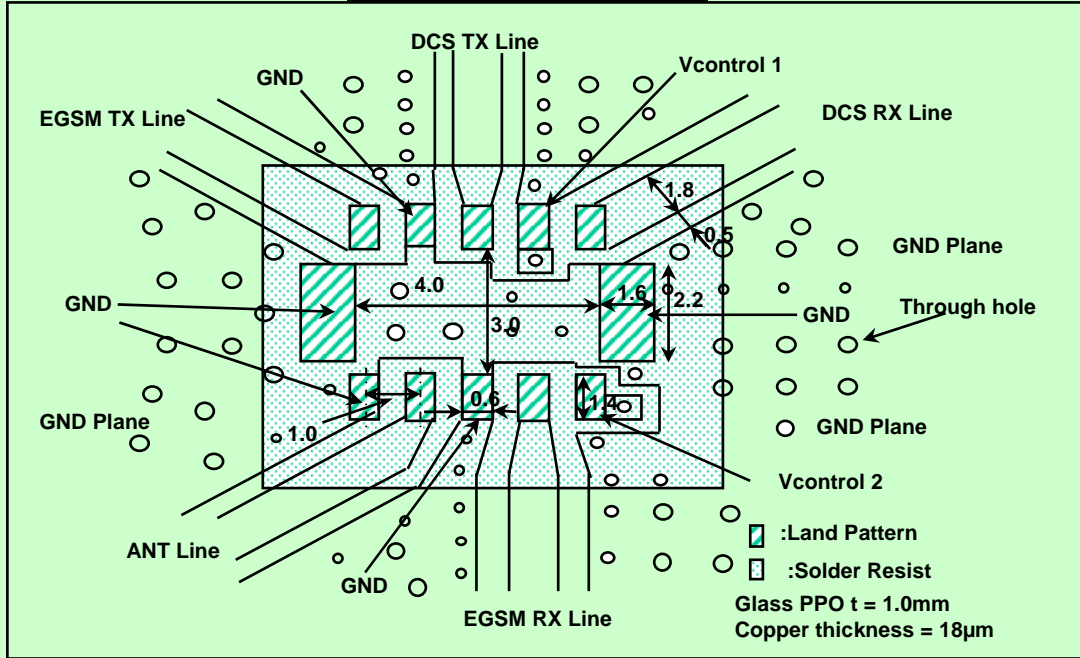
DCS

Mode	Port	Band (MHz)	Parameter	min	typ.	max	unit
Tx	Tx -> ANT	1710~1785	Insertion Loss		1.15	1.4	dB
		1710~1785	VSWR (Tx port)		1.10	1.8	
		3420~3570	Attenuation $2f_0$	23	31		dB
		5130~5355	Attenuation $3f_0$	20	29		dB
	Tx -> Rx	1710~1785	Isolation	20	31		dB
Rx	ANT -> Rx	1805~1880	Insertion Loss		0.85	1.3	dB
		1805~1880	VSWR (Rx port)		1.40	1.8	

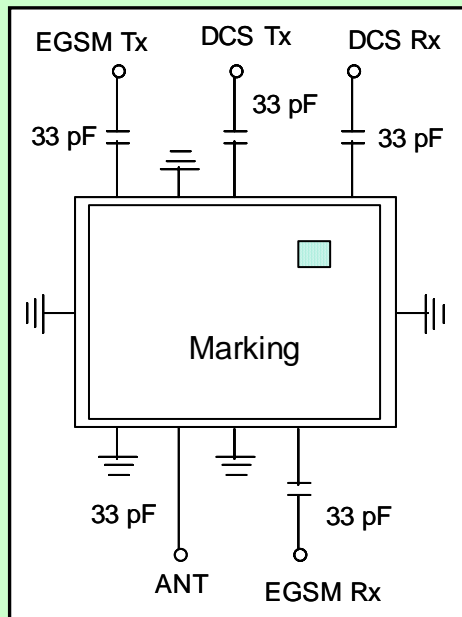
NTK Antenna Switch Module

Part Number: LMG002S-5008C

Recommended Land Pattern



Measurement Circuit



- All specifications contained herein are subject to change without prior notice. Please contact your local NTK sales office for additional details.