

### FEATURES

- Sampling Rates from 1 kHz to 20 MHz (MSPS)
- DNL better than 1/4 LSB from 1 kHz to 10 MHz
- DNL better than 1/2 LSB to 14 MHz
- Adjustable Input Range between GND and  $V_{DD}$
- Pin Compatible Upgrade of MP7690
- Monotonic; No Missing Codes
- Single Power Supply (4 to 6 volt)
- Low Power CMOS (300 mW)
- ESD Protection: 2000 Volts Minimum
- Latch-Up Free

### BENEFITS

- Reduced Board Space (Small Package) and Reduced External Parts
- No External Sample/Hold Needed, Reducing System Cost and Improving Ease of Design
- Adjustable Input Range and Scaling

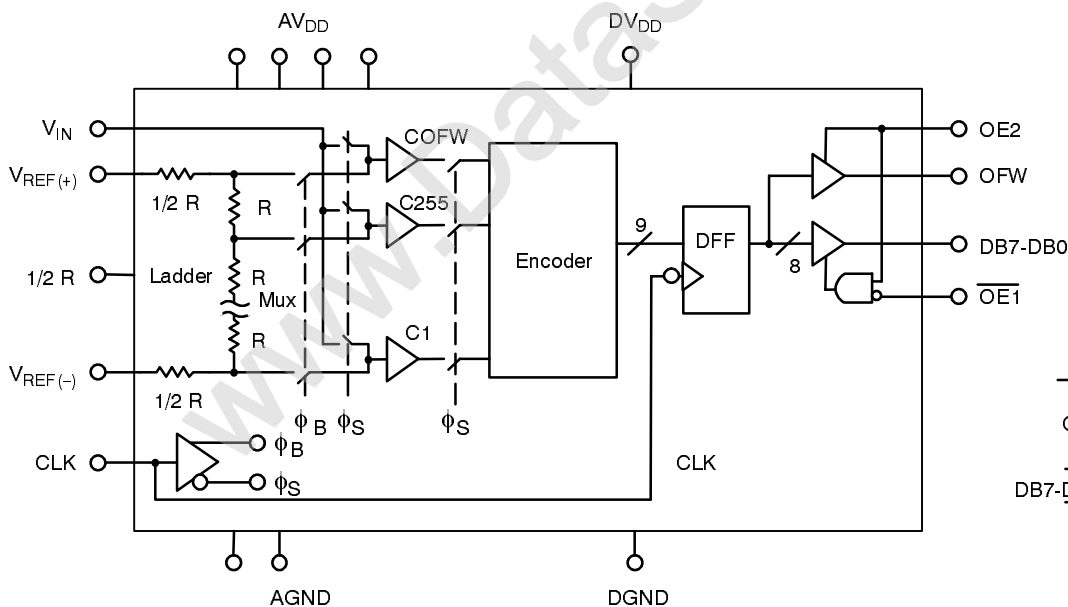
### GENERAL DESCRIPTION

The MP7690A is an 8-bit monolithic CMOS single step high speed Analog-to-Digital Converter designed for precision applications in video and data acquisition requiring conversion rates to 14 MHz with differential linearity error less than 1/2 LSB and low power consumption. The input architecture of the MP7690A allows direct interface to any analog input range between

GND and  $V_{DD}$  (0 to 2 V, 1 to 4 V, 0 to 5 V, etc.). The user simply sets  $V_{REF(+)}$  and  $V_{REF(-)}$  to encompass the desired input range.

The MP7690A includes 256 clocked comparators, encoders, 3-state output buffers, a reference ladder resistor and associated timing circuitry. An overflow bit (or flag) is provided.

### SIMPLIFIED BLOCK AND TIMING DIAGRAM

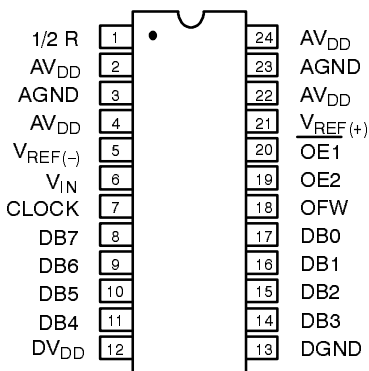


## ORDERING INFORMATION

Package Type	Temperature Range	Part No.	DNL (LSB)	INL (LSB)
Ceramic Dip	-40 to +85°C	MP7690AAD	±1	±2
Ceramic Dip	-40 to +85°C	MP7690ABD	±3/4	±1 3/4
Ceramic Dip	-55 to +125°C	MP7690ASD	±1	±2

## PIN CONFIGURATION

See Packaging Section for Package Dimensions



24 Pin CDIP (0.300")

## PIN OUT DEFINITIONS

PIN NO.	NAME	DESCRIPTION
1	1/2R	Center Point of Reference Ladder
2	AV <sub>DD</sub>	Analog Power Supply Voltage
3	AGND	Analog Ground
4	AV <sub>DD</sub>	Analog Power Supply Voltage
5	V <sub>REF(-)</sub>	Lower Reference Voltage Input
6	V <sub>IN</sub>	Analog Input Voltage
7	CLK	Sampling Clock Input
8	DB7	Data Output Bit 7 (MSB)
9	DB6	Data Output Bit 6
10	DB5	Data Output Bit 5
11	DB4	Data Output Bit 4
12	DV <sub>DD</sub>	Digital Power Supply Voltage

PIN NO.	NAME	DESCRIPTION
13	DGND	Digital Ground
14	DB3	Data Output Bit 3
15	DB2	Data Output Bit 2
16	DB1	Data Output Bit 1
17	DB0	Data Output Bit 0 (LSB)
18	OFW	Overflow Bit Output
19	OE2	Output Enable Control Pin
20	OE1	Output Enable Control Pin
21	V <sub>REF(+)</sub>	Upper Reference Voltage Input
22	AV <sub>DD</sub>	Analog Power Supply Voltage
23	AGND	Analog Ground Return
24	AV <sub>DD</sub>	Analog Power Supply Voltage

## ELECTRICAL CHARACTERISTICS TABLE

Unless Otherwise Specified:  $AV_{DD} = DV_{DD} = 5\text{ V}$ ,  $F_S = 14.0\text{ MHz}$  (Duty Cycle: 1/3 Sample & 2/3 Balance),  $V_{REF(+)} = 4.1$ ,  $V_{REF(-)} = \text{GND}$ ,  $T_A = 25^\circ\text{C}$

Parameter	Symbol	25°C			Tmin to Tmax		Units	Test Conditions/Comments
		Min	Typ	Max	Min	Max		
<b>KEY FEATURES</b>								
Resolution		8			8		Bits	For Specified Accuracy
Maximum Sampling Rate	FS	14			14		MHz	
Minimum Sampling Rate	FS	0.001			0.001		MHz	
<b>ACCURACY (A, S Grades)<sup>1</sup></b>								
Differential Non-Linearity	DNL				±3/4		LSB	Best Fit Line (Max INL - Min INL) / 2
Integral Non-Linearity (Relative Accuracy)	INL				±1 1/2		LSB	
Zero Scale Error	EZS	2					LSB	
Full Scale Error	EFS	2					LSB	
<b>ACCURACY (B, T Grades)<sup>1</sup></b>								
Differential Non-Linearity	DNL				±1/2		LSB	Best Fit Line
Integral Non-Linearity	INL				±1		LSB	
Zero Scale Error	EZS	2					LSB	
Full Scale Error	EFS	2					LSB	
<b>DYNAMIC ACCURACY</b>								
Differential Non-Linearity	DNL	±0.30					LSB	Histogram Test $F_{IN} = 1\text{ MHz}$ $F_{IN} = 5\text{ MHz}$
	DNL	±0.65					LSB	
<b>REFERENCE VOLTAGES</b>								
Positive Ref. Voltage <sup>2</sup>	$V_{REF(+)}$	$V_{DD}$			$V_{DD}$		V	
Negative Ref. Voltage	$V_{REF(-)}$	GND			GND		V	
Ladder Resistance	$R_L$	170	225	300	130	330	Ω	
Ladder Temp. Coefficient <sup>3</sup>	$R_{TCO}$				3000		ppm/°C	
<b>ANALOG INPUT</b>								
Input Voltage Range	$V_{IN}$	$V_{REF(-)}$	$V_{REF(+)}$		$V_{REF(-)}$	$V_{REF(+)}$	V p-p	$V_{REF} = 4\text{ V}$
Input Impedance	$Z_{IN}$	10					MΩ	
Input Capacitance Sample <sup>4</sup>	$C_{INA}$	50					pF	
Aperture Delay	$t_{AP}$	15					ns	
Aperture Uncertainty (Jitter)	$t_{AJ}$	45					ps	
Clock Kickback Pulse		20					pAs	
<b>DIGITAL INPUTS</b>								
Logical "1" Voltage	$V_{IH}$	2.0			2.0		V	$V_{IN} = \text{GND to } V_{DD}$
Logical "0" Voltage	$V_{IL}$				0.8		V	
Leakage Currents <sup>5</sup>								
CLK	$I_{IN}$	-10	10		-10	10	μA	
OE2 (Internal Res to $V_{DD}$ ) <sup>6</sup>		-50	5		-50	5	μA	
OE1 (Internal Res to GND) <sup>7</sup>		-5	50		-5	50	μA	

## ELECTRICAL CHARACTERISTICS TABLE CONT'D

Parameter	Symbol	25° C			Tmin to Tmax		Units	Test Conditions/Comments
		Min	Typ	Max	Min	Max		
<b>DIGITAL OUTPUTS</b>								
Logical "1" Voltage	$V_{OH}$	$V_{DD}-0.5$			$V_{DD}-0.5$		V	$C_{Load}=15\text{ pF}$ $I_{LOAD} = -2.0\text{ mA}$ $I_{LOAD} = 4.0\text{ mA}$ $V_{OUT}=GND\text{ to }V_{DD}$
Logical "0" Voltage	$V_{OL}$			0.4		0.4	V	
Tristate Leakage	$I_{OZ}$			$\pm 10$	-15	+15	$\mu\text{A}$	
Data Valid Delay <sup>3</sup>	$t_{DL}$		23	33	23	35	ns	
Data Enable Delay <sup>3</sup>	$t_{DEN}$			20		25	ns	
Data Tristate Delay <sup>3</sup>	$t_{DHZ}$			20		25	ns	
<b>POWER SUPPLIES</b>								
Operating Voltage ( $AV_{DD}$ , $DV_{DD}$ )	$V_{DD}$	4	5	6	4	6	V	
Current ( $AV_{DD} + DV_{DD}$ )	$I_{DD}$			80		85	mA	
<b>AC PARAMETERS<sup>3</sup></b>								
Signal Noise Ratio <sup>10</sup>	SNR		47				dB	RMS/RMS Measures FS = 3X NTSC
	SNR		46				dB	FS = 4X NTSC
Differential Gain Error	dG		2				%	FS = 3X NTSC
Differential Phase Error	dPh		1				Degree	

**Notes:**

- Tester measures code transitions by dithering the voltage of the analog input ( $V_{IN}$ ). The difference between the measured and the ideal code width ( $V_{REF}/256$ ) is the DNL error (NO TAG). The INL error is the maximum distance (in LSBs) from the best fit line to any transition voltage (NO TAG). Accuracy is a function of the sampling rate ( $F_S$ ).
- For best results it is recommended that the reference voltage be limited to ( $V_{DD} - 0.5\text{ V}$ ) maximum.
- Guaranteed. Not tested.
- See  $V_{IN}$  input equivalent circuit (NO TAG). Switched capacitor analog input requires driver with low output resistance.
- All inputs have diodes to  $V_{DD}$  and GND. Input OE1 has an internal pull down. Input OE2 has an internal pull up. Input DC currents will not exceed specified limits for any input voltage between GND and  $V_{DD}$ .
- Internal resistor to  $V_{DD}$  biases unconnected input to active high logical level.
- Internal resistor to GND biases unconnected input to active low logical level.
- Condition to meet aperture delay specifications ( $t_{AP}$ ,  $t_{AJ}$ ). Actual rise/fall time can be less stringent with no loss of accuracy.
- SNR: Ratio of RMS signal to RMS noise up to  $1/2 F_S$  in dB.

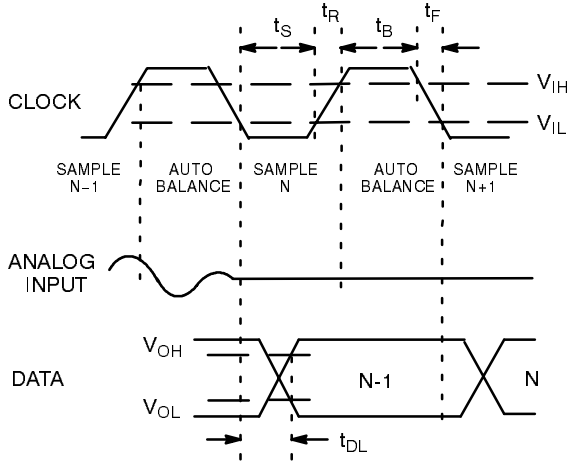
Specifications are subject to change without notice

## ABSOLUTE MAXIMUM RATINGS (TA = +25° C unless otherwise noted)<sup>1, 2</sup>

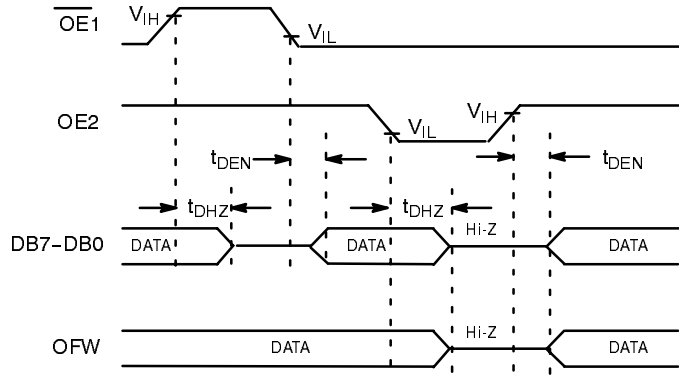
$V_{DD}$ to GND	..... +7 V	Storage Temperature	..... -65 to +150° C
$V_{REF}(+)$ & $V_{REF}(-)$	..... GND -0.5 to $V_{DD} + 0.5\text{ V}$	Lead Temperature (Soldering 10 seconds)	..... +300° C
$V_{IN}$	..... GND -0.5 to $V_{DD} + 0.5\text{ V}$	Package Power Dissipation Rating to 75° C	
All Digital Inputs	..... GND -0.5 to $V_{DD} + 0.5\text{ V}$	CDIP	..... 1100mW
All Digital Outputs	..... GND -0.5 to $V_{DD} + 0.5\text{ V}$	Derates above 75° C	..... 15mW/° C

**Notes:**

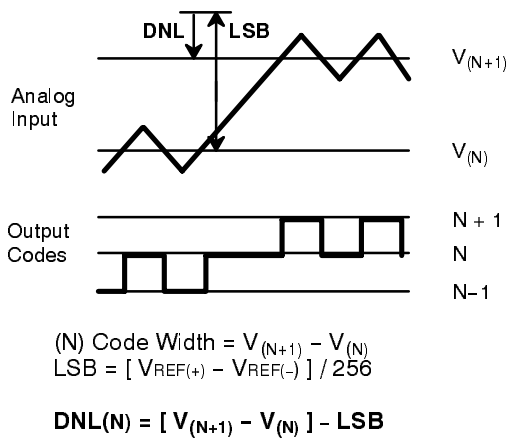
- Stresses above those listed under "Absolute Maximum Ratings" may cause permanent damage to the device. This is a stress rating only and functional operation at or above this specification is not implied. Exposure to maximum rating conditions for extended periods may affect device reliability.
- Any input pin which can see a value outside the absolute maximum ratings should be protected by Schottky diode clamps (HP5082-2835) from input pin to the supplies. All inputs have protection diodes which will protect the device from short transients outside the supplies of less than 100mA for less than 100 $\mu\text{s}$ .



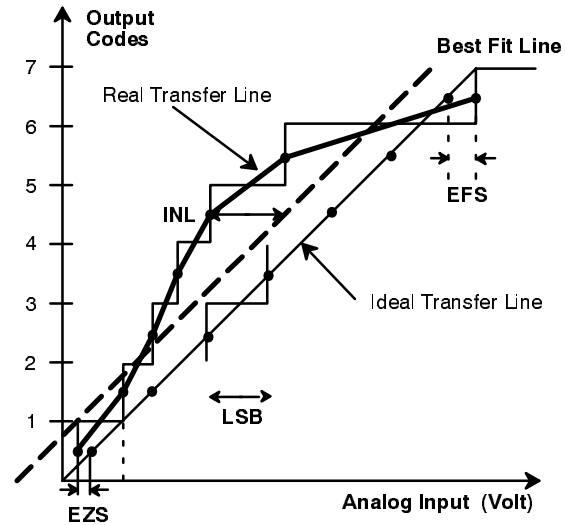
**Figure 1. MP7690A Timing Diagram**



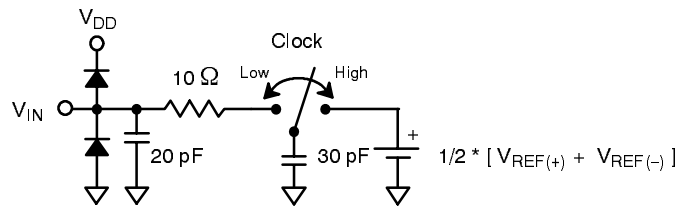
**Figure 2. Output Enable/Disable Timing Diagram**



**Figure 3. DNL Measurement**



**Figure 4. INL Error Calculation**



**Figure 5. Analog Input Equivalent Circuit**

## CHARTS

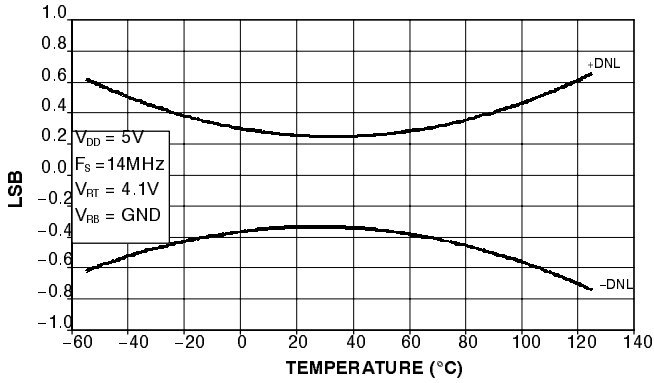


Figure 8. DNL vs TEMPERATURE

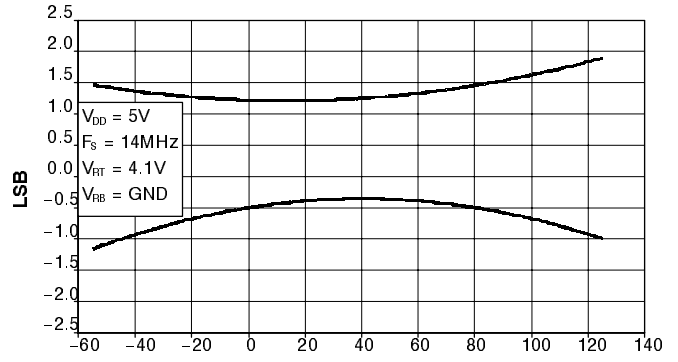


Figure 9. INL vs TEMPERATURE

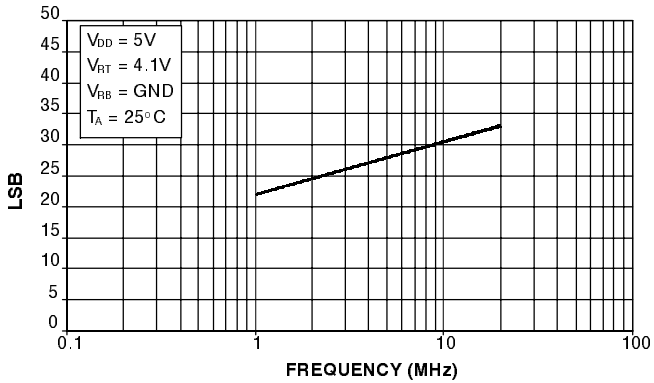


Figure 6. IDD vs FREQUENCY

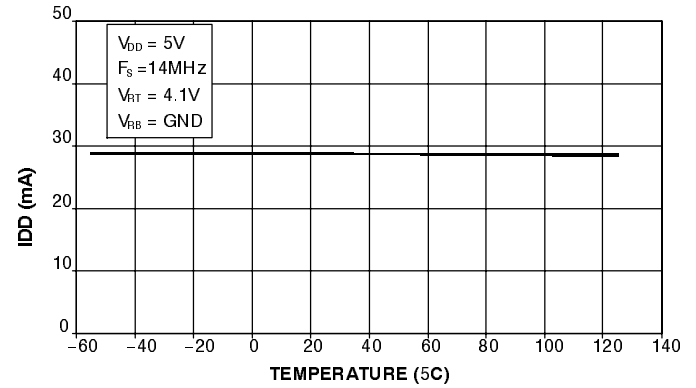


Figure 7. IDD vs TEMPERATURE

**THEORY OF OPERATION**

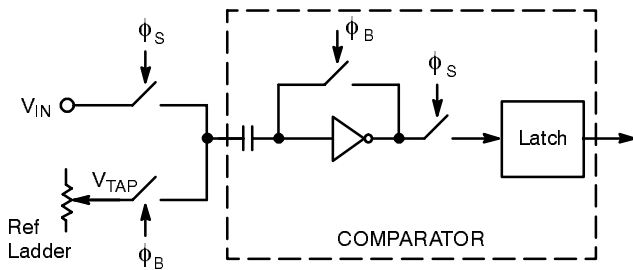
**Analog-to-Digital Conversion**

The MP7690A converts analog voltages into 256 digital codes by encoding the outputs of 255 comparators. A 256th comparator is used to generate the overflow bit. The conversion is synchronous with the clock and it is accomplished in 1.5 clock periods. Data is transferred from the comparator latches to the output registers each clock period and at the same time the input is sampled.

The clock signal generates the two internal phases,  $\phi_B$  (CLK high = balance) and  $\phi_S$  (CLK low = sample).  $\phi_B$  connects the comparators to the reference tap points.  $\phi_S$  connects the comparators to the analog input voltage.

The reference resistance ladder is a series of 257 resistors. The first and the last resistor of the ladder are half the value of the others so that the following relations apply:

$$R_{REF} = 256 * R \quad V_{REF} = V_{REF(+)} - V_{REF(-)} = 256 * LSB$$



**Figure 10. MP7690A Comparator**

The MP7690A comparators use the balance phase ( $\phi_B$ ) to charge one plate of the capacitors to the reference ladder tap point ( $V_{TAP}$ ) and the other to the inverter/comparator trigger point. During the sample phase ( $\phi_S$ ) one plate of the capacitors switches to  $V_{IN}$ . The change in voltage ( $V_{IN} - V_{TAP}$ ) transfers across the capacitors and forces the inverters into one of the two possible logic states. Latches (connected to the comparators during  $\phi_S$ ) restore and propagate the digital level to the decode logic.

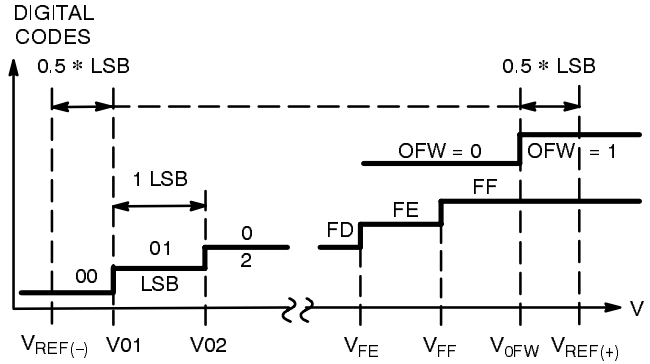
The rising edge of the CLK input marks the end of the sampling phase ( $\phi_S$ ). Internal delay of the clock circuitry will delay the actual instant when  $\phi_S$  disconnects the latches from the comparators. This delay is called aperture delay ( $t_{AP}$ ).

The aperture delay may vary from one cycle to the next. Internal thermal noise, power supply noise and slow input clock edges are major contributors to this variation. The aperture jitter ( $t_{AJ}$ ) is the variation of the aperture delay distribution.

This uncertainty shows as digital code errors if the input slew rate multiplied by  $t_{AJ}$  is of the same order of magnitude as the LSB. That is, if  $(dv/dt) * t_{AJ} \approx V_{REF}/256$  then one LSB of error results.

**Accuracy of Conversion: DNL and INL**

The transfer function for an ideal A/D converter is shown in Figure 11.



**Figure 11. Ideal A/D Transfer Function**

The overflow transition ( $V_{0FW}$ ) takes place at:

$$V_{IN} = V_{0FW} = V_{REF(+)} - 0.5 * LSB$$

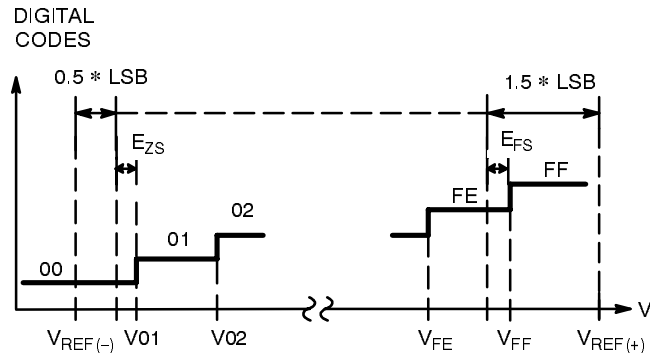
The first and the last transitions for the data bits take place at:

$$V_{IN} = V_{01} = V_{REF(-)} + 0.5 * LSB$$

$$V_{IN} = V_{FF} = V_{REF(-)} - 1.5 * LSB$$

$$LSB = V_{REF} / 256 = (V_{FF} - V_{01}) / 254$$

Note that the overflow bit has no impact on the data bits.



**Figure 12. Real A/D Transfer Curve**

In a "real" converter, the code-to-code transitions are not always exactly every  $V_{REF}/256$  volts.

A positive DNL (Differential Non-Linearity) error means that the real width of a particular code is larger than 1 LSB. This error is measured in fractions of LSB's.

A Max DNL specification guarantees that ALL code widths (DNL errors) are within the stated values. A specification of Max DNL =  $\pm 0.5$  LSB means that all codes are within 0.5 and 1.5 LSB. If  $V_{REF} = 4.096$  V then 1 LSB = 16mV and every code width is between 8 and 24 mV.

The formulas for Differential Non-linearity (DNL), Integral Non-Linearity (INL) and zero and full scale errors (EFS, EFS) are:

$$DNL (01) = V_{02} - V_{01} - LSB$$

...

$$DNL (FE) = V_{FF} - V_{FE} - LSB$$

$$EFS \text{ (full scale error)} = V_{FF} - [V_{REF(+)} - 1.5 * LSB]$$

$$EFS \text{ (zero scale error)} = V_{01} - [V_{REF(-)} + 0.5 * LSB]$$

Figure 12. shows the zero scale and full scale error terms.

Systems that adjust the  $V_{REF}$  voltages to correct for EFS and EZS only increase the accuracy at the two extreme points. In the MP7690A, such adjustments have little impact at frequencies lower than 10 MHz and generally are not required. Refer to the characterization data for temperature and frequency dependence.

Figure 4. gives a visual definition of the INL error. The chart shows a 3 bit converter transfer curve with greatly exaggerated DNL errors to show the deviation of the real transfer curve from an ideal one.

INL is specified in terms of best fit line. Best fit line makes the  $INL+$  and  $INL-$  errors equal by using the algebraic sum divided by 2. For example, an INL error of -1 to +2 LSB's relative to the Ideal Line would be  $\pm 1.5$  LSB's relative to the Best Fit Line.

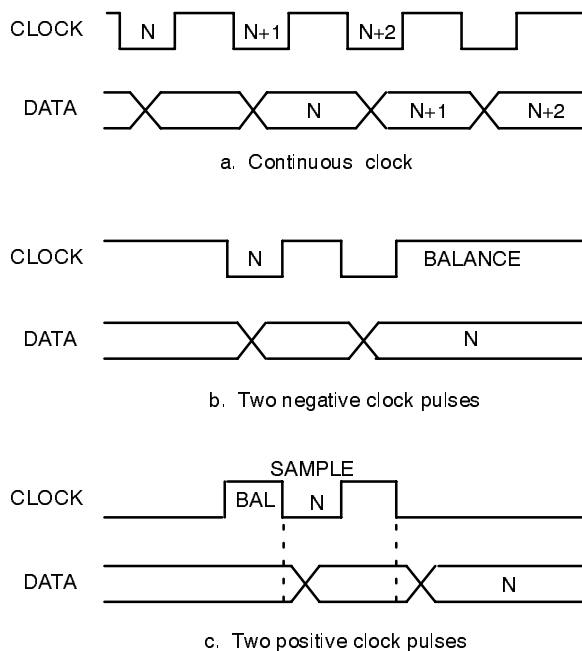


Figure 13. Relationship of Data to Clock

## Clock and Conversion Timing

A system will clock the MP7690A (Figure 9b.) continuously or it will give clock pulses intermittently when a conversion is desired. The timing of Figure 9b. keeps the MP7690A comparators in balance and ready to sample the analog input. This mode draws the most current from  $V_{DD}$ . The timing of Figure 9c. leaves the comparator inputs floating (and AC coupled to the  $V_{IN}$  input) and a balance phase is needed before a valid sampling phase. In this mode,  $I_{DD}$  varies because of the floating comparator inputs.

## Analog Input

The MP7690A has very flexible input range characteristics. The user may set  $V_{REF(+)}$  and  $V_{REF(-)}$  to two fixed voltages and then vary the input DC and AC levels to match the  $V_{REF}$  range. Another method is to first design the analog input circuitry and then adjust the reference voltages for the analog input range. One advantage is that this approach may eliminate the need for external gain and offset adjust circuitry which may be required by fixed input range A/Ds.

The MP7690A's performance is optimized by using analog input circuitry that is capable of driving the  $A_{IN}$  input.

## Reference Voltages

If the input bandwidth is limited to the Nyquist region ( $F_{IN} < F_S/2$ ) then the two reference voltages can be set at any two values between the supplies.  $V_{REF}$  (their difference) can be reduced down to 1.5 volts with minor change in accuracy. If the input bandwidth exceeds  $F_S/2$ , then it is recommended that  $V_{REF}$  be lower than  $V_{DD}/2$ .

If  $V_{REF}$  is reduced below 1.5 V, accuracy will be degraded due to the decreased signal-to-noise ratio.

The input/output relationship is a function of  $V_{REF}$ :

$$A_{IN} = V_{IN} - V_{REF(-)}$$

$$V_{REF} = V_{REF(+)} - V_{REF(-)}$$

$$DATA = 255 * (A_{IN}/V_{REF}) \text{ (Full Scale)}$$

- a) **Gain adjustment.** A system can increase total gain by reducing  $V_{REF}$ .
- b) **Increasing dynamic range.** A system can increase dynamic range by using DACs to control  $V_{REF}$  and by "focusing" on input ranges of interest. In digitizing "static" information (an image in a scanner) a first digitization would point to the input range in which most of the output codes fall. The system can then adjust the DACs to generate  $V_{REF(+)}$  and  $V_{REF(-)}$  to include just the range of interest for the second and final pass.
- c) **Subranging; increasing resolution.** Where practical, multiple passes at different  $V_{REF}$  ranges can increase resolution without changing hardware. A system needs to make four passes to increase the resolution to 10 bits. The merging of the data from the four passes can create DNL errors at



the borders of the ranges. One solution is to “overlap” the ranges and to use software methods to properly merge the ranges.

**Digital Interfaces**

The logic encodes the 255 input bits into a binary code and latches the data in a D-type flip-flop for output. The inputs OE1 and OE2 control the output buffers in an asynchronous mode.

The functional equivalent of the MP7690A (Figure 14.) is composed of:

- 1) Delay stage ( $t_{AP}$ ) from the clock to the sampling phase ( $\phi_s$ ).
- 2) An A/D which tracks and converts  $V_{IN}$  with no delay.
- 3) A DFF (D type flip-flop) with specified hold ( $t_{HLD}$ ) and delay ( $t_{DL}$ ) times.  $t_{AP}$ ,  $t_{HLD}$  and  $t_{DL}$  are specified in the Electrical Characteristics table.

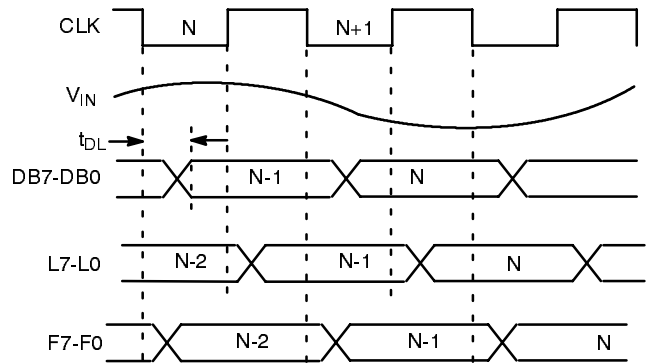
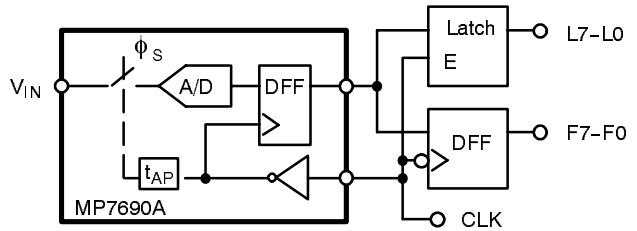
$\overline{OE1}$	OE2	OFW	DB7-DB0
X	0	High Z	High Z
1	1	Valid	High Z
0	1	Valid	Valid

**Table 1. Output Enable Logic**

If an external DFF is to follow the MP7690A, it is recommended that the system latches the data at the negative going edge of the clock. This will work at any frequency. If the system

must latch with the positive going edge then care must be taken to avoid the overlay of the clock edge with the changing outputs.

If a latch follows the ADC, the positive half of the clock used as an enable signal for the latch guarantees stable output at the end of the enable pulse.



**Figure 14. MP7690A Functional Equivalent Circuit and Interface Timing**

## APPLICATION NOTES

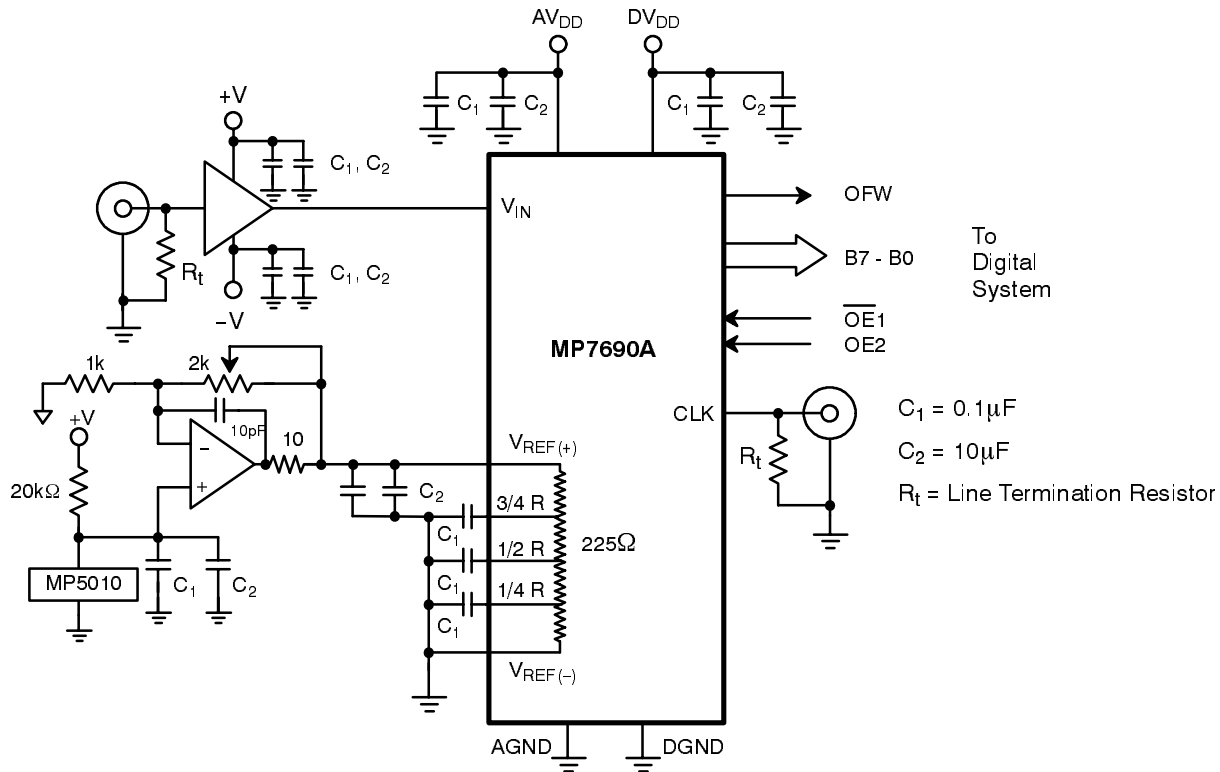
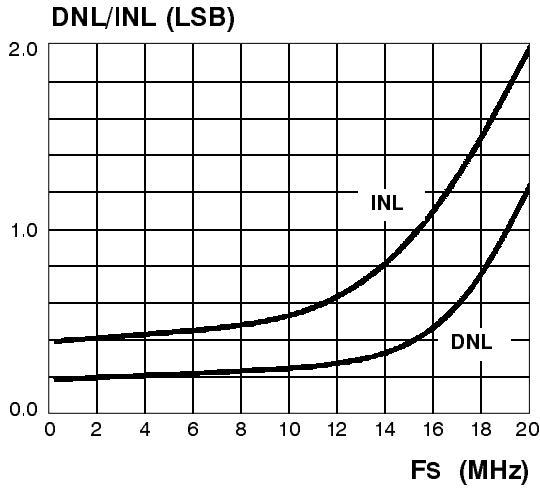


Figure 15. Typical Circuit Connections

The following information will be useful in maximizing the performance of the MP7690A.

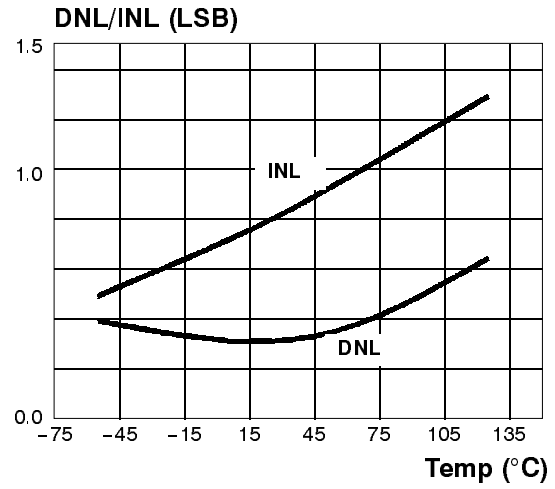
- All signals should not exceed  $AV_{DD} + 0.5 \text{ V}$  or  $AGND - 0.5 \text{ V}$  or  $DV_{DD} + 0.5 \text{ V}$ .
- Any input pin which can see a value outside the absolute maximum ratings ( $AV_{DD}$  or  $DV_{DD} + 0.5 \text{ V}$  or  $AGND - 0.5 \text{ V}$ ) should be protected by diode clamps (HP5082-2835) from input pin to the supplies. All MP7684A inputs have input protection diodes which will protect the device from short transients outside the supply ranges.
- The design of a PC board will affect the accuracy of MP7690A. Use of wire wrap is not recommended.
- The analog input signal ( $V_{IN}$ ) is quite sensitive and should be properly routed and terminated. It should be shielded from the clock and digital outputs to minimize cross coupling and noise pickup.
- The analog input should be driven by a low impedance (less than  $50 \Omega$ ).
- Analog and digital ground planes should be substantial and common at one point only. The ground plane should act as a shield for parasitics and not a return path for signals. To reduce noise levels, use separate low impedance ground paths.
- $DV_{DD}$  should not be shared with other digital circuitry to avoid conversion errors caused by digital supply transients.  $DV_{DD}$  should be connected to  $AV_{DD}$  next to the MP7690A.
- Each power supply and reference voltage pin should be decoupled with a ceramic ( $0.1 \mu\text{F}$ ) and a tantalum ( $10 \mu\text{F}$ ) capacitor as close to the device as possible.
- The digital output should not drive long wires. The capacitive coupling and reflection will contribute noise to the conversion. When driving distant loads, buffers should be used.

**CHARACTERIZATION CHARTS** (Unless Otherwise Specified:  $AV_{DD} = DV_{DD} = 5\text{ V}$ ,  $F_S = 14\text{ MHz}$  (50% Duty Cycle),  $V_{REF(+)} = 4.1\text{ V}$ ,  $V_{REF(-)} = \text{GND}$ ,  $T_A = 25^\circ\text{C}$ )



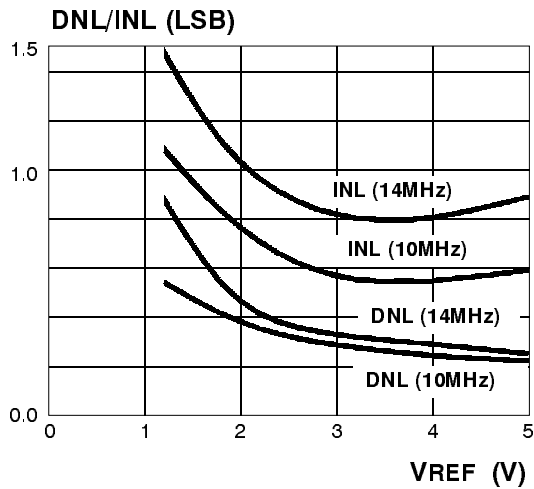
**Accuracy (DNL/INL)  
vs. Sampling Rate ( $F_S$ )**

**Figure 16.**



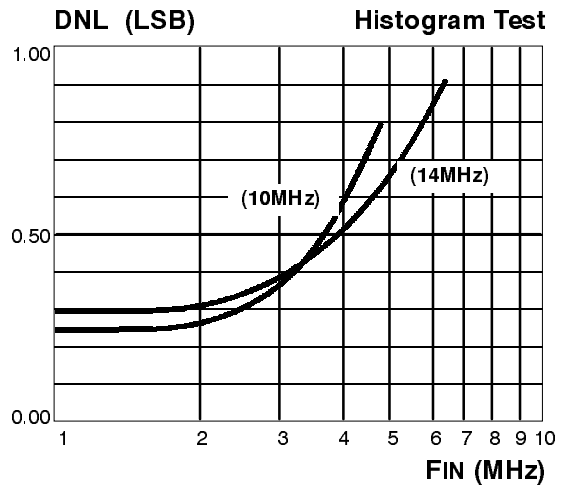
**Accuracy (DNL/INL)  
vs. Ambient Temperature ( $T$ )**

**Figure 17.**



**Accuracy (DNL/INL)  
vs. Reference Voltage ( $V_{REF}$ )  
vs. Sampling Rate ( $F_S = 10, 14\text{ MHz}$ )  
( $V_{IN\ p-p} = V_{REF}$ )**

**Figure 18.**



**Dynamic (DNL/INL)  
vs. Input Sinewave ( $F_{IN}$ )  
vs. Sampling Rate ( $F_S = 10, 14\text{ MHz}$ )**

**Figure 19.**