

TOSHIBA PHOTO IC SILICON EPITAXIAL PLANAR

# TPS811, TPS813

PHOTOELECTRIC SWITCHES

COPIERS, PRINTERS, AND FACSIMILES

COMMODITY AND TICKET BENDING MACHINES  
AND TERMINAL EQUIPMENT IN FINANCIAL  
COMPUTER SYSTEMS

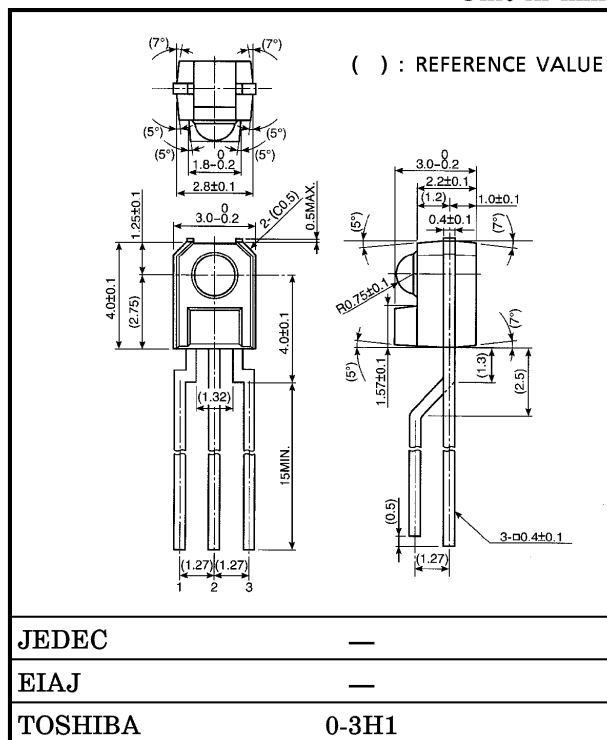
HANDY TERMINALS

The TPS811 and TPS813 represent a Si photo IC of digital output type that integrates a photodiode, amplifier circuit, and Schmitt trigger circuit into a single chip.

These devices respond faster than the phototransistor type. They output a high when light is input.

- Compact side-view epoxy resin package
- High speed response  
:  $t_{pLH} = 2.5\mu s$ ,  $t_{pHL} = 5.5\mu s$  (TYP.)
- High sensitivity :  $0.3mW/cm^2$  (MAX.)
- Can be directly connected to TTL and CMOS.
- Operates over a wide supply voltage range  
:  $V_{CC} = 4.5\sim 17V$
- Digital output  
TPS811 .... Open collector  
TPS813 .... With a pull-up resistor

Unit in mm



Weight : 0.12g (TYP.)

**MAXIMUM RATINGS (Ta = 25°C)**

CHARACTERISTIC	SYMBOL	RATING	UNIT
Supply Voltage	$V_{CC}$	17	V
Output Voltage	TPS811	30	V
	TPS813	$\leq V_{CC}$	
Output Current	$I_O$	50	mA
Output Current Derating (Ta > 25°C)	$\Delta I_O / ^\circ C$	-0.67	mA / °C
Power Dissipation	$P_O$	250	mW
Power Dissipation Derating (Ta > 25°C)	$\Delta P_O / ^\circ C$	-3.33	mW / °C
Operating Temperature Range	$T_{opr}$	-30~85	°C
Storage Temperature Range	$T_{stg}$	-40~100	°C
Soldering Temperature (5s) (Note 1)	$T_{sol}$	260	°C

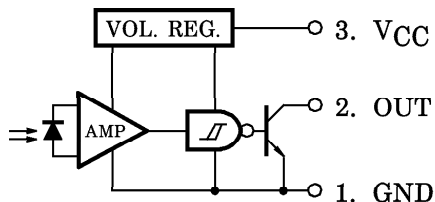
Note 1 : At the location of 1.3mm from the resin package bottom

961001EAA2

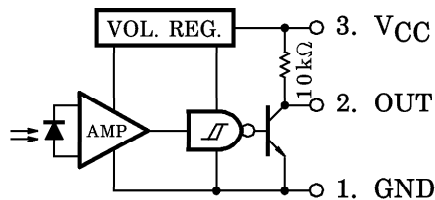
● TOSHIBA is continually working to improve the quality and the reliability of its products. Nevertheless, semiconductor devices in general can malfunction or fail due to their inherent electrical sensitivity and vulnerability to physical stress. It is the responsibility of the buyer, when utilizing TOSHIBA products, to observe standards of safety, and to avoid situations in which a malfunction or failure of a TOSHIBA product could cause loss of human life, bodily injury or damage to property. In developing your designs, please ensure that TOSHIBA products are used within specified operating ranges as set forth in the most recent products specifications. Also, please keep in mind the precautions and conditions set forth in the TOSHIBA Semiconductor Reliability Handbook.

**PIN CONNECTION**

TPS811



TPS813



OPTO-ELECTRICAL CHARACTERISTICS (Ta = -30~85°C, VCC = 4.5~17V, Typical values are all at 25°C.)

CHARACTERISTIC		SYMBOL	TEST CONDITION	MIN.	TYP.	MAX.	UNIT	
Supply Voltage		VCC		4.5	—	17	V	
High Level Supply Current		ICCH	E = 2mW / cm <sup>2</sup> (Note 2)	—	1.2	3.2	mA	
Low Level Supply Current	TPS811	ICCL	E = 0	—	2.5	5.2	mA	
	TPS813			—	4	7.5		
High Level Output Current	TPS811	IOH	E = 2mW / cm <sup>2</sup> (Note 2) VO = 30V	—	—	15	μA	
High Level Output Voltage	TPS813	VOH	E = 2mW / cm <sup>2</sup> (Note 2)	0.9VCC	—	—	V	
Low Level Output Voltage		VOL	IOL = 16mA, E = 0	—	0.07	0.4	V	
“L”→“H” Threshold Radiant Incidence		ELH	Ta = 25°C	—	0.1	0.3	mW / cm <sup>2</sup>	
				—	—	0.6		
Relative Output Voltage		EHL / ELH	Ta = 25°C	0.5	0.65	0.9	—	
Peak Sensitivity Wavelength		λP		—	900	—	nm	
Switching Time	Propagation Delay Time	“L”→“H”	Ta = 25°C VCC = 5V E = 2mW / cm <sup>2</sup> RL = 280Ω (Note 3)	—	2.5	9	μs	
		“H”→“L”		—	5.5	15		
	Rise Time			t <sub>r</sub>	—	0.08		0.5
	Fall Time			t <sub>f</sub>	—	0.02		0.5

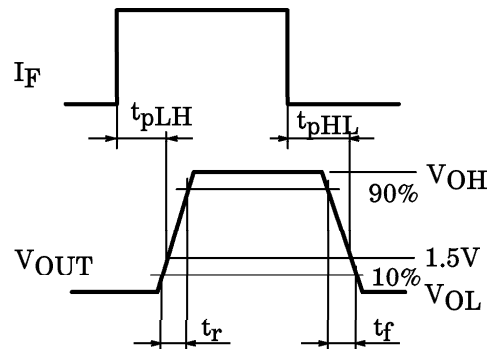
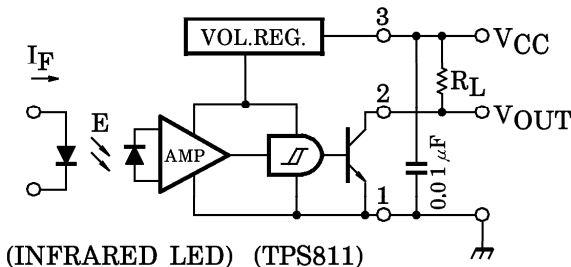
Note 2 : CIE standard light source A (standard tungsten bulb) with color temperature = 2856°K

961001EAA2'

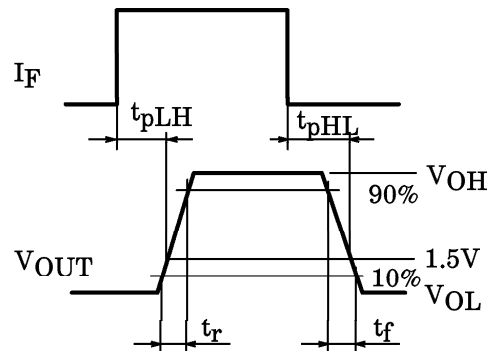
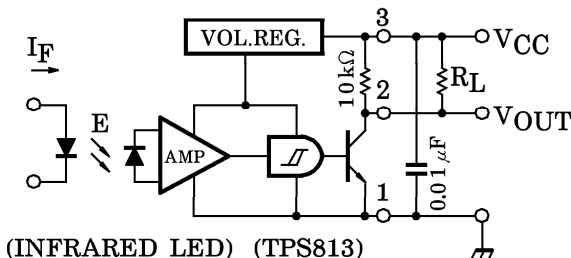
- The information contained herein is presented only as a guide for the applications of our products. No responsibility is assumed by TOSHIBA CORPORATION for any infringements of intellectual property or other rights of the third parties which may result from its use. No license is granted by implication or otherwise under any intellectual property or other rights of TOSHIBA CORPORATION or others.
- The information contained herein is subject to change without notice.

Note 3 : Switching time measurement circuit and waveform

TPS811



TPS813

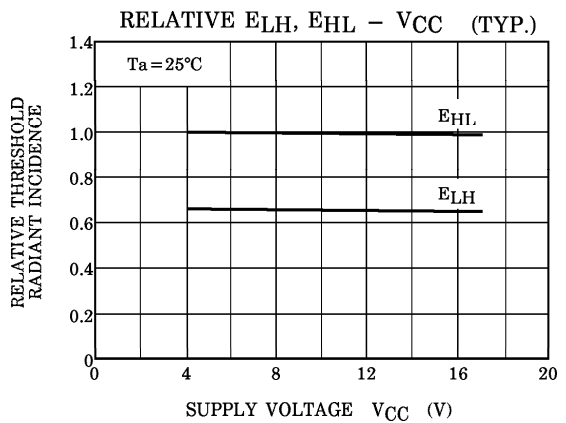
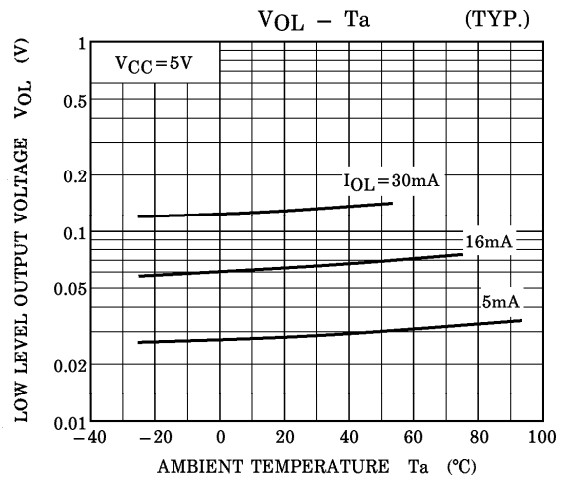
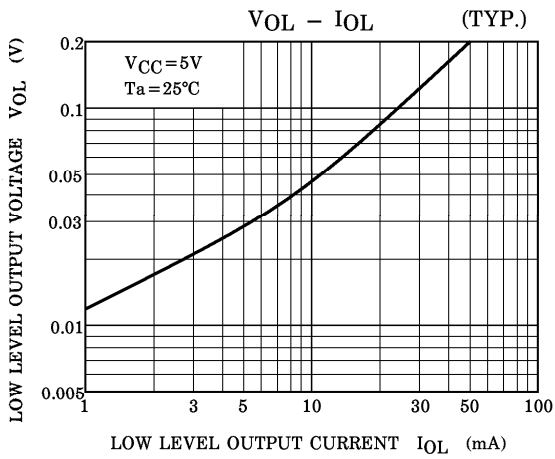
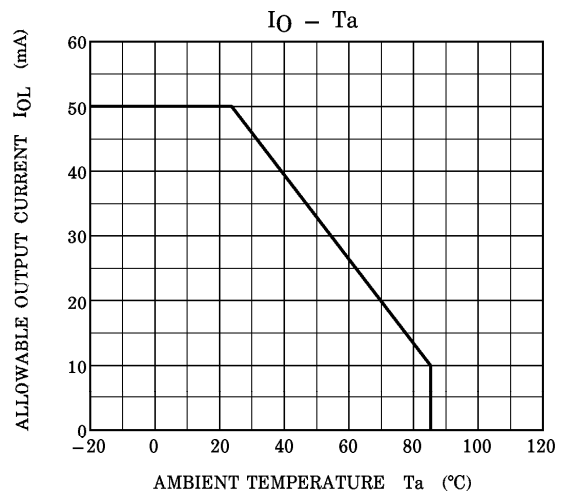
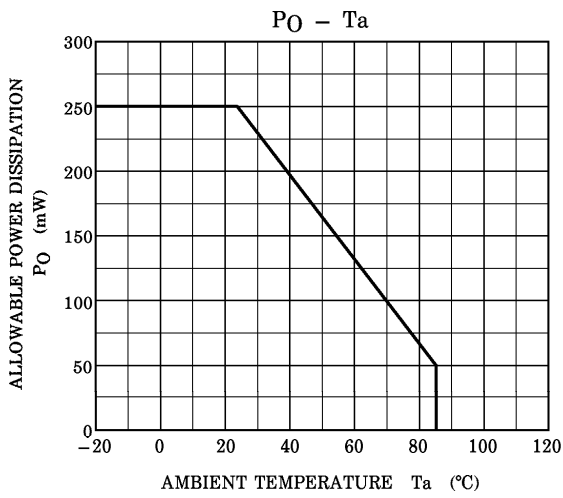


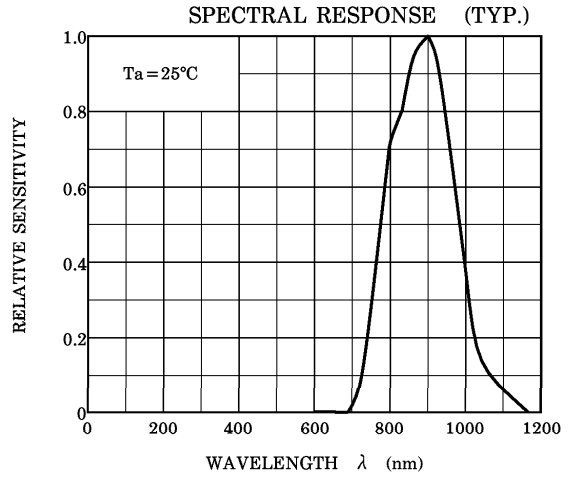
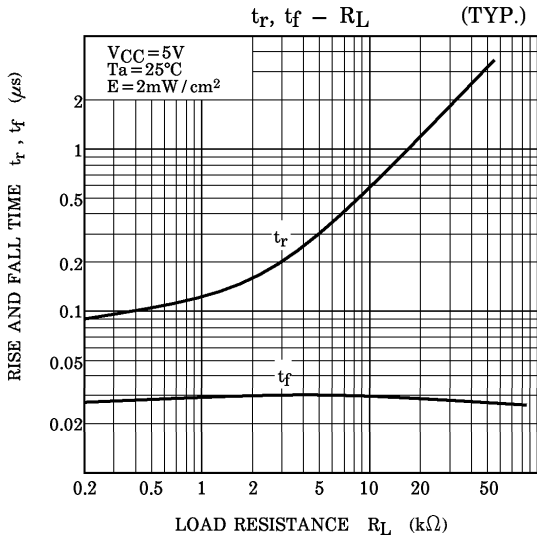
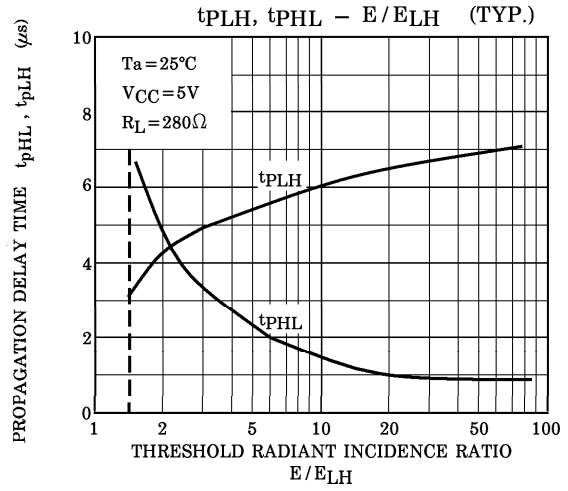
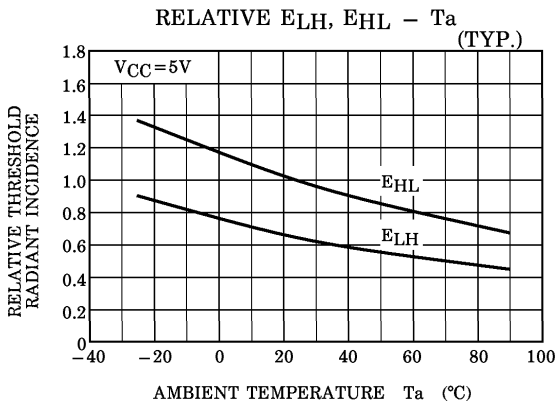
RECOMMENDED OPERATING CONDITIONS

CHARACTERISTIC	SYMBOL	MIN.	TYP.	MAX.	UNIT
Supply Voltage	V <sub>CC</sub>	4.5	—	17	V
Output Voltage	V <sub>O</sub>	4.5	—	17	V
Low Level Output Current	I <sub>OL</sub>	—	—	16	mA
Operating Temperature	T <sub>opr</sub>	0	—	70	°C

PRECAUTIONS

1. When you consider a combined use with an LED, be sure to use an infrared LED. Visible rays in wavelength of less than 700nm cannot be detected.
2. Make sure the shielding plate that is used to detect positions is manufactured from materials with superior light-shielding characteristics. Insufficient shield can cause malfunction.
3. Photo ICs contain a high-sensitivity amplifier. Toshiba recommends connecting a capacitor of about 0.01μF that has good high-frequency characteristics between V<sub>CC</sub> and GND near the device to prevent unwanted oscillation.





DIRECTIONAL SENSITIVITY CHARACTERISTIC (TYP.) ( $T_a=25^{\circ}C$ )

