

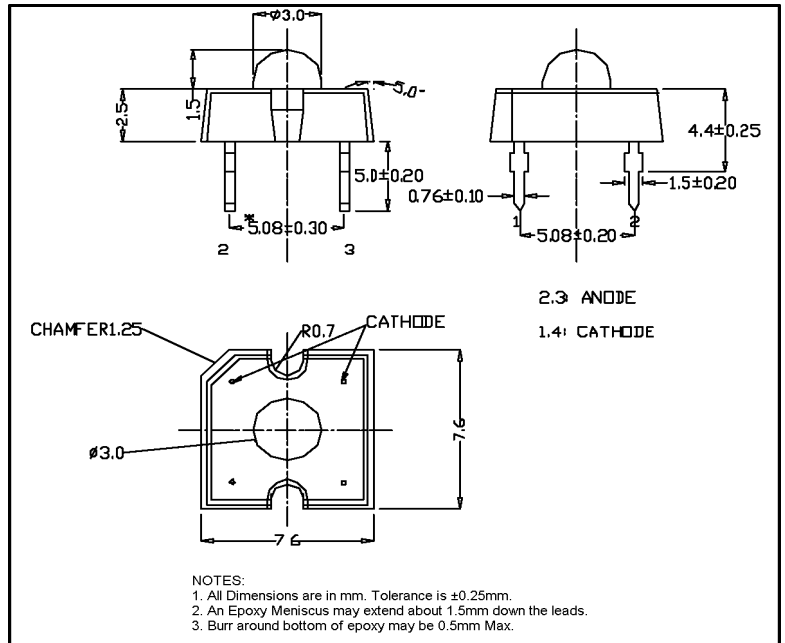
LP377TYL1-70G

Features

- Low Profile
- 4 Pin Plastic Package
- Water Clear Lens
- High Flux Output
- High Current Operation

Applications

- Automotive Interior Exterior Lighting
- Rail Signals
- Traffic Control Devices
- Channel Letters
- Strip Lighting
- Architectural Lighting



Maximum Ratings ($T_a=25^\circ\text{C}$)

Characteristic	Symbol	Max.	Unit
Forward Current	I_F	70	mA
Reverse Voltage	V_R	5.00	V
Power Dissipation	P_D	150.00	mW
Operating Temperature	T_{opr}	-40 ~ +100	$^\circ\text{C}$
Storage Temperature	T_{stg}	-40 ~ +100	$^\circ\text{C}$
Soldering Temperature	T_{sol}	260	$^\circ\text{C}$
Soldering Time	-	for 5 sec. max	-

Opto-Electrical Characteristics ($T_a=25^\circ\text{C}$)

Characteristic	Symbol	Test Condition	Min	Typ	Max	Unit
Forward Voltage	V_F	$I_F=70\text{mA}$	2.20	2.60	3.00	V
Reverse Current	I_R	$V_R=5\text{V}$	-	-	100	μA
Luminous Flux	Φ	$I_F=70\text{mA}$	2000.00	3200.00	-	mlm
Viewing Angle	$2\theta^{1/2}$	-	-	70°	-	deg.
Peak Wavelength	λ_p	$I_F=70\text{mA}$	-	594	-	nm
Dominant Wavelength	λ_d	$I_F=70\text{mA}$	-	591	-	nm
Spectral Line Half Width	$\Delta\lambda$	$I_F=70\text{mA}$	-	20	-	nm

Company Headquarters
 120 Broadway
 Menands, New York 12204
 Toll Free: 800.984.5337
 Fax: 518.432.7454



Web: www.marktechopto.com | Email: info@marktechopto.com

West Coast Sales Office
 950 South Coast Drive, Suite 265
 Costa Mesa, California 92626
 Toll Free: 800.984.5337
 Fax: 714.850.9314

LP377TYL1-70G Graphs

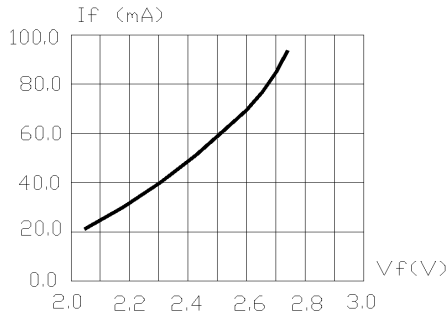


FIG.1 FORWARD CURRENT VS. FORWARD VOLTAGE.

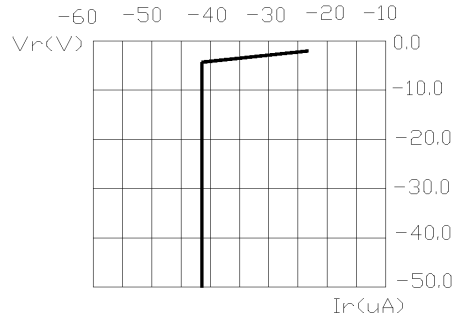


FIG.2 REVERSE CURRENT VS. REVERSE VOLTAGE.

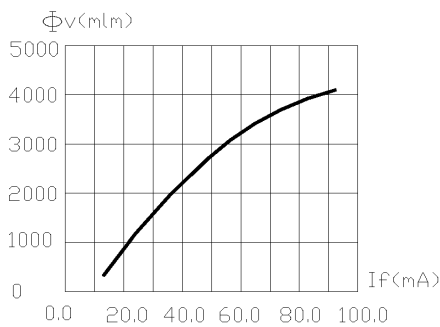


FIG.3 RELATIVE FLUX VS. FORWARD CURRENT.

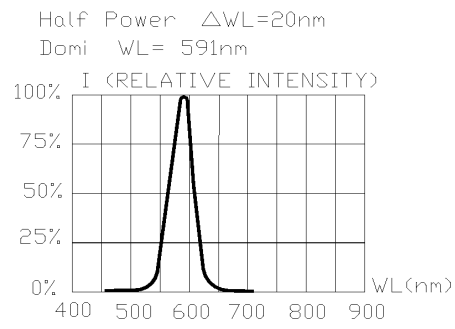


FIG.4 RELATIVE INTENSITY VS. WAVE LENGTH.

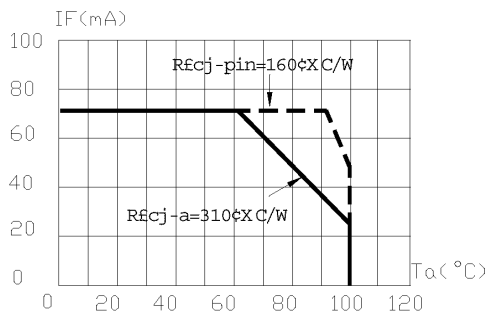


FIG.5 MAXIMUM FORWARD DC CURRENT VS TEMPERATURE. DERATING BASED ON $T_{jmax}=120^{\circ}C$

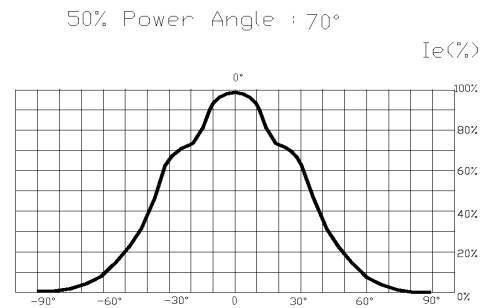


FIG.6 SPATIAL DISTRIBUTION.

1. Cathode PAD Area ($0.18 \times 0.18 \times 2inch^2$)
2. Height above nominal seating plane in inches(0.3inch)