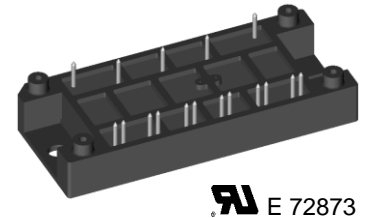
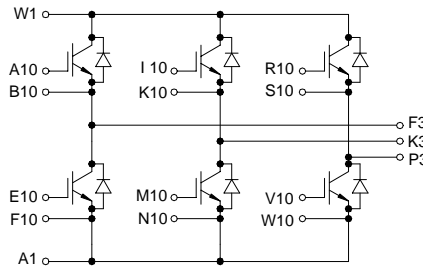


IGBT Modules

Sixpack

$I_{C25} = 45 \text{ A}$
 $V_{CES} = 1200 \text{ V}$
 $V_{CE(sat) \text{ typ.}} = 2.2 \text{ V}$

Short Circuit SOA Capability
Square RBSOA



Preliminary data

Symbol	Conditions	Maximum Ratings	
V_{CES}	$T_J = 25^\circ\text{C to } 150^\circ\text{C}$	1200	V
V_{CGR}	$T_J = 25^\circ\text{C to } 150^\circ\text{C}; R_{GE} = 20 \text{ k}\Omega$	1200	V
V_{GES}	Continuous	± 20	V
V_{GEM}	Transient	± 30	V
I_{C25}	$T_C = 25^\circ\text{C}$	45	A
I_{C80}	$T_C = 80^\circ\text{C}$	30	A
I_{CM}	$T_C = 80^\circ\text{C}, t_p = 1 \text{ ms}$	60	A
t_{SC} (SCSOA)	$V_{GE} = \pm 15 \text{ V}, V_{CE} = V_{CES}, T_J = 125^\circ\text{C}$ $R_G = 39 \Omega$, non repetitive	10	μs
RBSOA	$V_{GE} = \pm 15 \text{ V}, T_J = 125^\circ\text{C}, R_G = 39 \Omega$ Clamped inductive load, $L = 100 \mu\text{H}$	$I_{CM} = 60$ $V_{CEK} \leq V_{CES}$	A
P_{tot}	$T_C = 25^\circ\text{C}$	200	W
T_J		150	$^\circ\text{C}$
T_{stg}		-40 ... +150	$^\circ\text{C}$
V_{ISOL}	50/60 Hz, RMS $t = 1 \text{ min}$	4000	V~
	$I_{ISOL} \leq 1 \text{ mA}$ $t = 1 \text{ s}$ Insulating material: Al_2O_3	4800	V~
M_d	Mounting torque (M5)	2.0 - 2.5	Nm
		18 - 22	lb.in.
d_s	Creepage distance on surface	9	mm
d_A	Strike distance through air	9	mm
a	Max. allowable acceleration	50	m/s^2
Weight	Typical	80	g
		2.8	oz.

Data according to a single IGBT/FRED unless otherwise stated.

Features

- NPT IGBT technology
- low saturation voltage
- low switching losses
- switching frequency up to 30 kHz
- square RBSOA, no latch up
- high short circuit capability
- positive temperature coefficient for easy paralleling
- MOS input, voltage controlled
- ultra fast free wheeling diodes
- solderable pins for PCB mounting
- package with DCB ceramic base plate
- isolation voltage 4800 V
- UL registered E72873

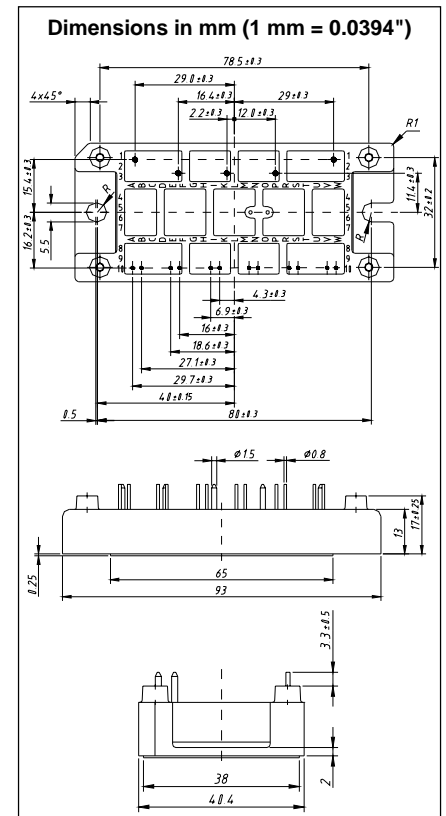
Advantages

- space and weight savings
- reduced protection circuits
- package designed for wave soldering

Typical Applications

- AC motor control
- AC servo and robot drives
- power supplies

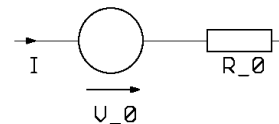
Symbol	Conditions	Characteristic Values ($T_J = 25^\circ\text{C}$, unless otherwise specified)		
		min.	typ.	max.
$V_{(BR)CES}$	$V_{GE} = 0\text{ V}$	1200		V
$V_{GE(th)}$	$I_C = 1\text{ mA}, V_{CE} = V_{GE}$	4.5		6.5 V
I_{CES}	$V_{CE} = V_{CES}$ $T_J = 25^\circ\text{C}$ $T_J = 125^\circ\text{C}$		2	1.2 mA mA
I_{GES}	$V_{CE} = 0\text{ V}, V_{GE} = \pm 20\text{ V}$			± 200 nA
$V_{CE(sat)}$	$I_C = 25\text{ A}, V_{GE} = 15\text{ V}$		2.2	2.7 V
C_{ies}	$V_{CE} = 25\text{ V}, V_{GE} = 0\text{ V}, f = 1\text{ MHz}$		1650	pF
C_{oes}			250	pF
C_{res}			110	pF
$t_{d(on)}$	Inductive load, $T_J = 125^\circ\text{C}$ $I_C = 25\text{ A}, V_{GE} = \pm 15\text{ V}$ $V_{CE} = 600\text{ V}, R_G = 39\ \Omega$		100	ns
t_r			70	ns
$t_{d(off)}$			500	ns
t_f			70	ns
E_{on}				3.8
E_{off}			2.8	mJ
R_{thJC}	with heatsink compound			0.6 K/W
R_{thJS}			1.2	K/W



Symbol	Conditions	Characteristic Values		
		min.	typ.	max.
V_F	$I_F = 25\text{ A}, V_{GE} = 0\text{ V}$ $I_F = 25\text{ A}, V_{GE} = 0\text{ V}, T_J = 125^\circ\text{C}$		2.4 1.9	2.6 V 2.3 V
I_F	$T_C = 25^\circ\text{C}$ $T_C = 80^\circ\text{C}$			50 A 30 A
I_{RM}	$I_F = 25\text{ A}, V_{GE} = 0\text{ V}, -di_F/dt = 400\text{ A}/\mu\text{s}$		20	A
t_{rr}	$T_J = 125^\circ\text{C}, V_R = 600\text{ V}$		200	ns
R_{thJC}	with heatsink compound			1.3 K/W
R_{thJS}			2.6	K/W

Equivalent Circuits for Simulation

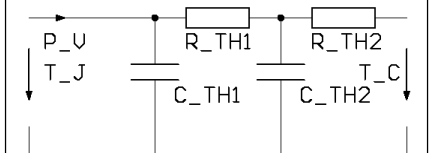
Conduction



IGBT (typ. at $V_{GE} = 15\text{ V}; T_J = 125^\circ\text{C}$)
 $V_0 = 1.5\text{ V}; R_0 = 40.7\text{ m}\Omega$

Free Wheeling Diode (typ. at $T_J = 125^\circ\text{C}$)
 $V_0 = 1.3\text{ V}; R_0 = 24.9\text{ m}\Omega$

Thermal Response

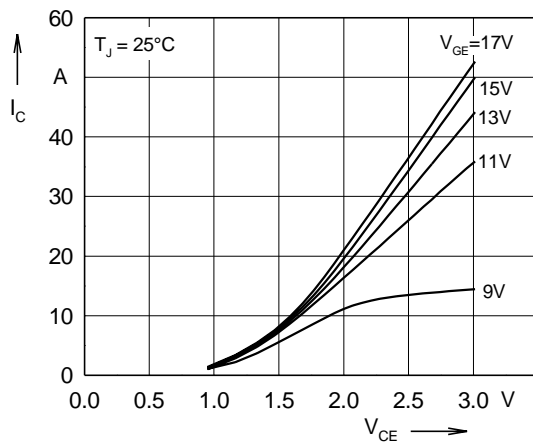
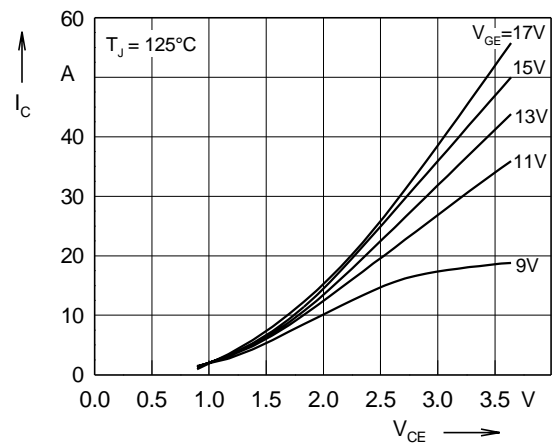
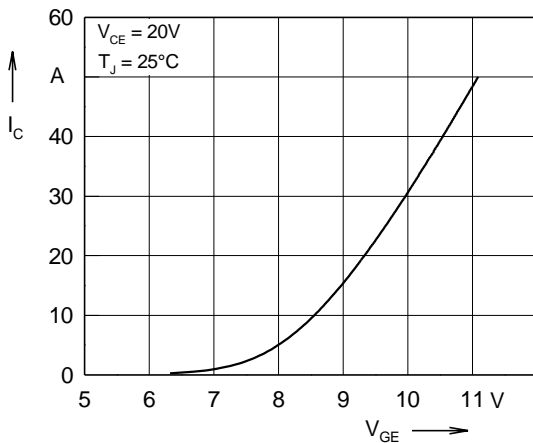
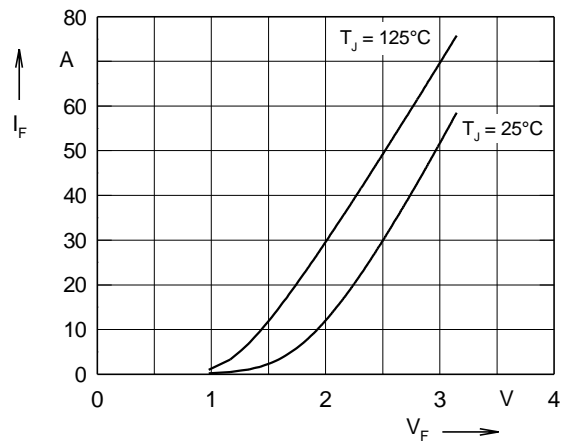
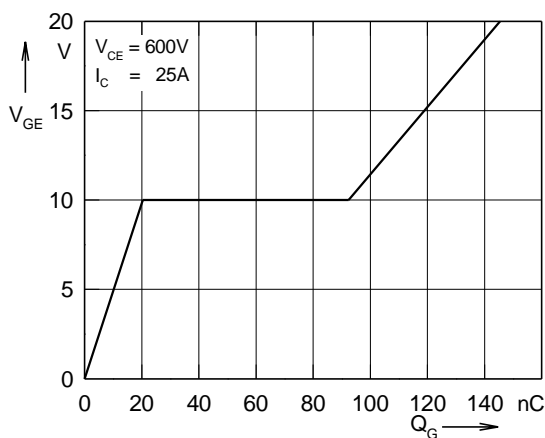
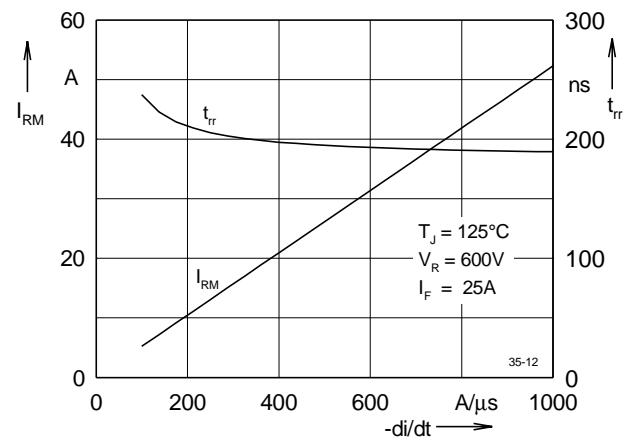


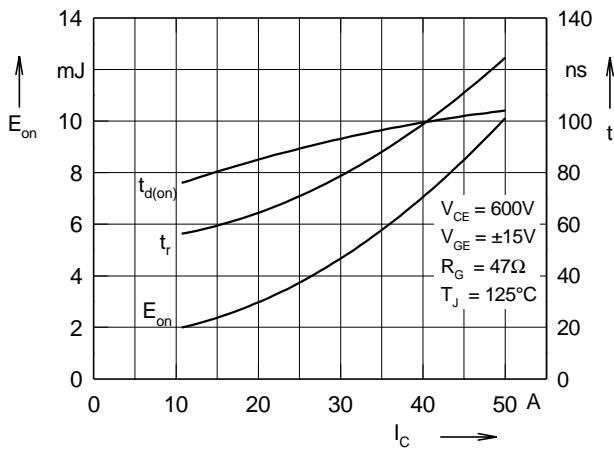
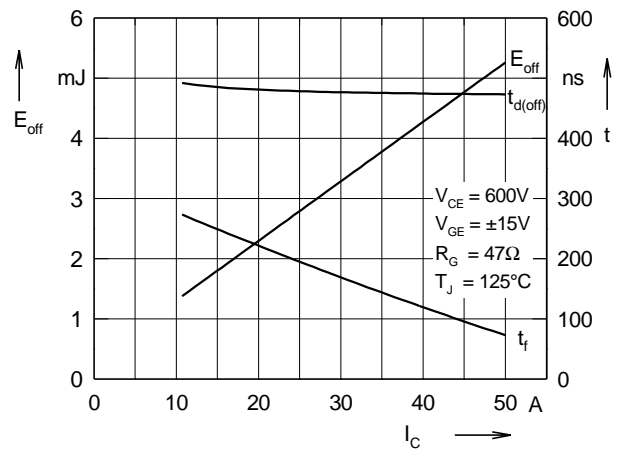
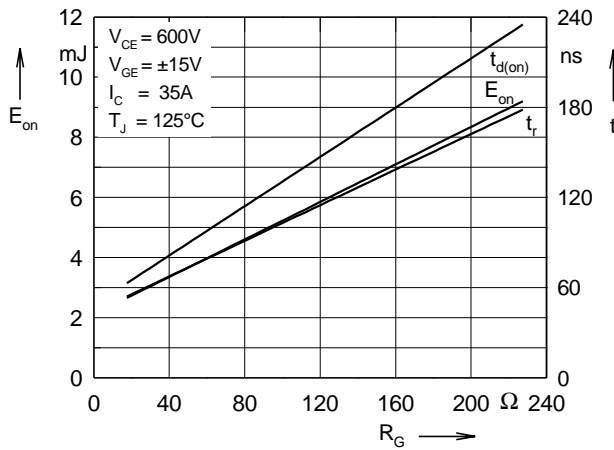
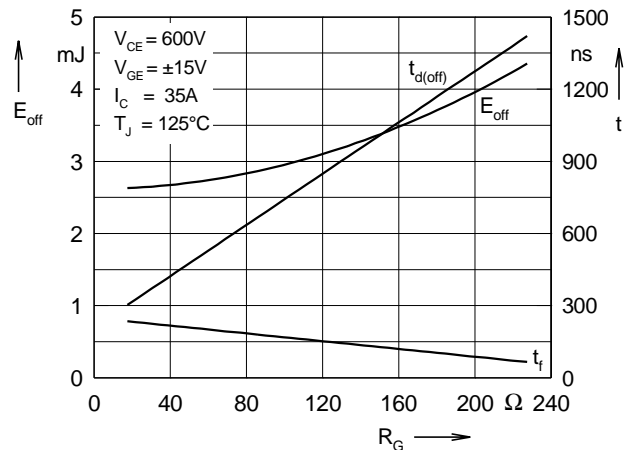
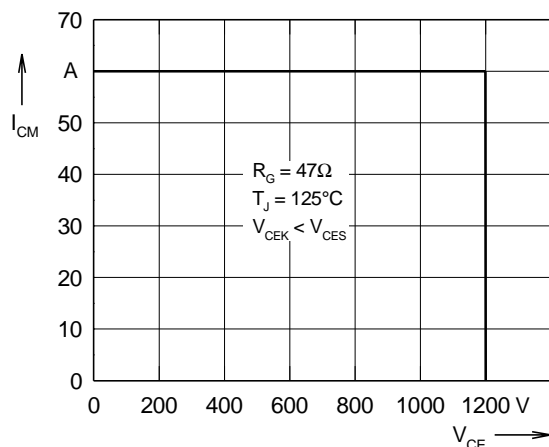
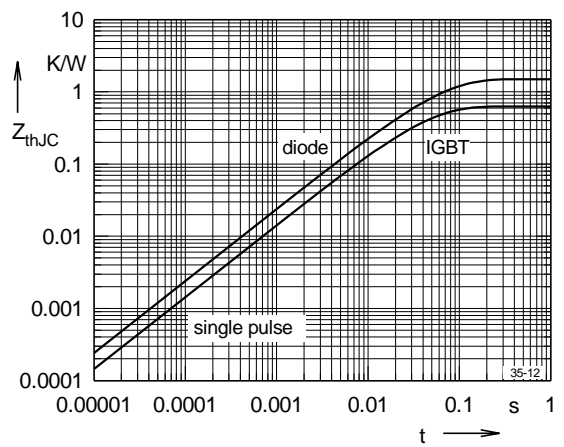
IGBT (typ.)

$C_{th1} = 0.07\text{ J/K}; R_{th1} = 0.586\text{ K/W}$
 $C_{th2} = 0.18\text{ J/K}; R_{th2} = 0.014\text{ K/W}$

Free Wheeling Diode (typ.)

$C_{th1} = 0.05\text{ J/K}; R_{th1} = 1.313\text{ K/W}$
 $C_{th2} = 0.09\text{ J/K}; R_{th2} = 0.025\text{ K/W}$


Fig. 1 Typ. output characteristics

Fig. 2 Typ. output characteristics

Fig. 3 Typ. transfer characteristics

Fig. 4 Typ. forward characteristics of free wheeling diode

Fig. 5 Typ. turn on gate charge

Fig. 6 Typ. turn off characteristics of free wheeling diode


Fig. 7 Typ. turn on energy and switching times versus collector current

Fig. 8 Typ. turn off energy and switching times versus collector current

Fig. 9 Typ. turn on energy and switching times versus gate resistor

Fig. 10 Typ. turn off energy and switching times versus gate resistor

Fig. 11 Reverse biased safe operating area RBSOA

Fig. 12 Typ. transient thermal impedance