

OVERVIEW

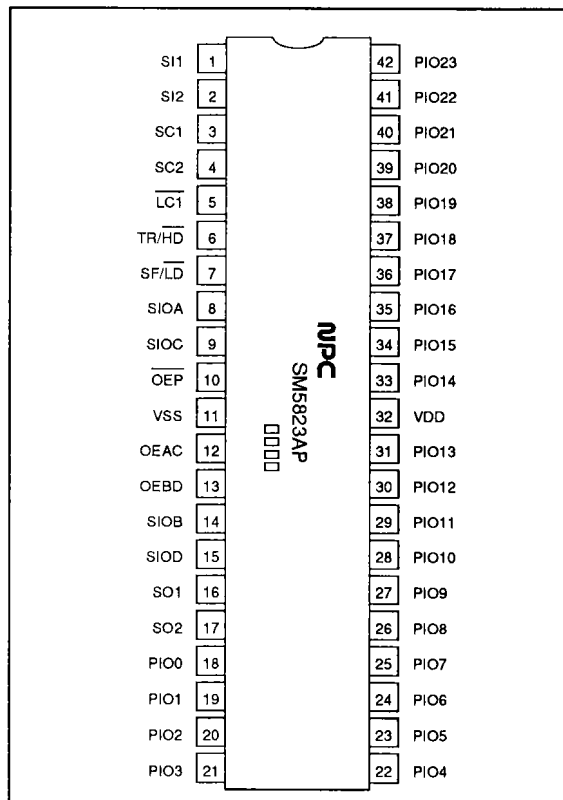
The SM5823AP is a high-speed, 24-bit serial-to-parallel converter and parallel-to-serial converter fabricated in Molygate[®] CMOS.

The SM5823AP features a mode selection scheme that allows it to operate as 8-, 16- or 24-bit converters (SIPO and PISO). It also features TTL-compatible, buffered input/outputs for easy bus interfacing, 30 MHz maximum operating frequency and low power consumption, making it ideal for digital video and audio signal processing applications.

FEATURES

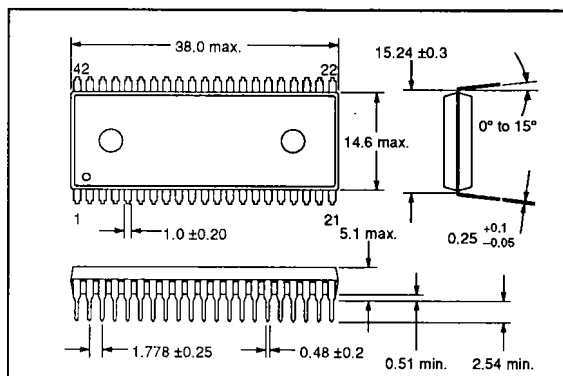
- Functions
 - 8/16/24-bit serial-to-parallel converter and parallel-to-serial converter
 - 30 MHz maximum operating frequency
 - 24-bit parallel I/O, general-purpose port bus interface
 - Extendable to lengths greater than 24 bits for both SIPO and PISO conversion
 - TTL-compatible input/outputs
 - 5 ±0.5 V supply
 - 42-pin shrink DIP
- Component blocks
 - Three 8-bit SIPO registers
 - Three 8-bit parallel output registers
 - Three 8-bit parallel input latches
 - Three 8-bit PISO registers
 - One 24-bit parallel input/output

PINOUT

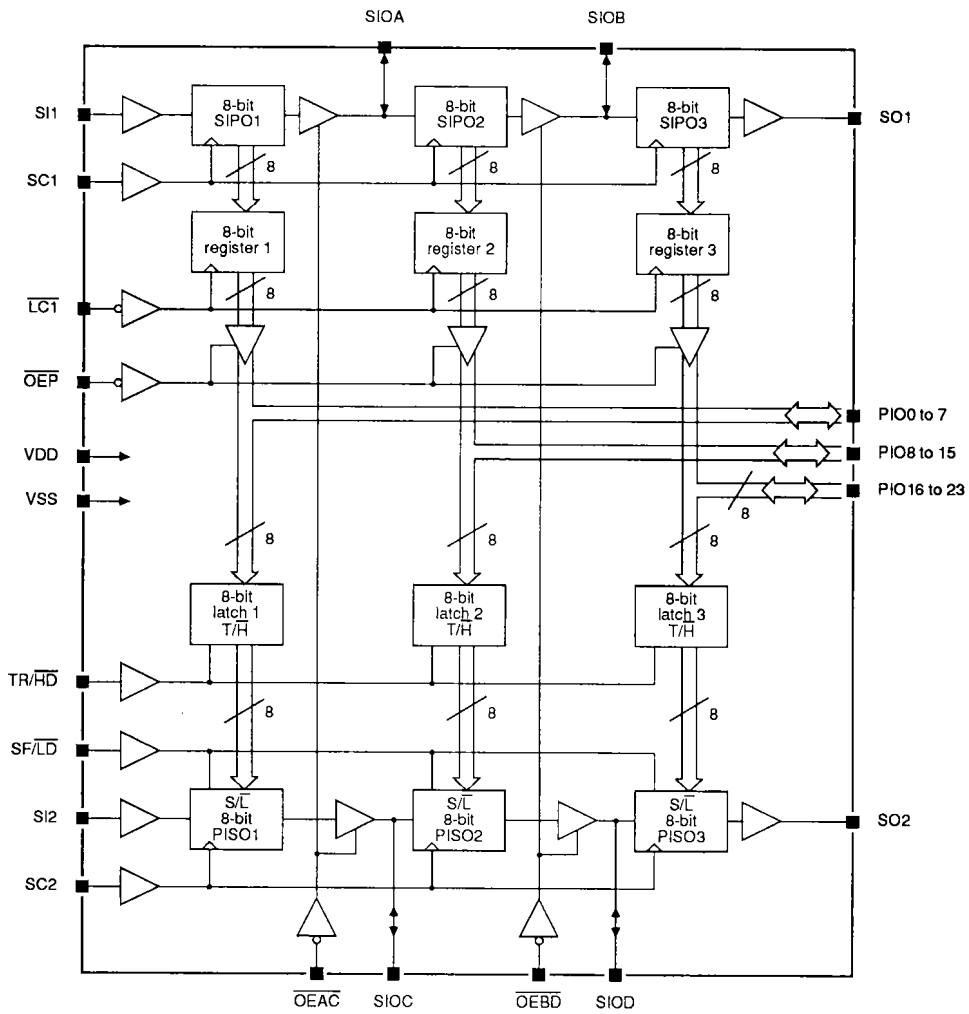


PACKAGE DIMENSIONS

Unit: mm



BLOCK DIAGRAM



PIN DESCRIPTION

Number	Name	I/O	Description
1	SI1	I	SIPO serial data 1
2	SI2	I	PISO serial data 1
3	SC1	I	SIPO shift clock (rising-edge trigger)
4	SC2	I	PISO shift clock (rising-edge trigger)
5	$\overline{LC1}$	I	SIPO data latch clock (falling-edge trigger)
6	$\overline{TR}/\overline{HD}$	I	PISO data latch clock. Transparent when HIGH and hold when LOW
7	$\overline{SF}/\overline{LD}$	I	PISO shift/load control signal. Shift when HIGH and load when LOW
8	SIOA	I/O	SIPO serial output 1 and SIPO serial input 2
9	SIOC	I/O	PISO serial output 1 and PISO serial input 2
10	\overline{OEP}	I	Parallel output enable signal. Enable when LOW and disable when HIGH
11	VSS		Ground

SM5823AP

Number	Name	I/O	Description
12	$\overline{\text{OEAC}}$	I	SIOA and SIOC serial output enable signal. Enable when LOW and disable when HIGH
13	$\overline{\text{OEBD}}$	I	SIOB and SIOD serial output enable signal. Enable when LOW and disable when HIGH
14	SIOB	I/O	SIPO serial output 2 and SIPO serial input 3
15	SIOD	I/O	PISO serial output 2 and PISO serial input 3
16	SO1	O	SIPO serial output 3
17	SO2	O	PISO serial output 3
18 to 31	PIO0 to PIO13	I/O	Parallel input/outputs
32	VDD		5 \pm 0.5 V supply
33 to 42	PIO14 to PIO23	I/O	Parallel input/outputs

SPECIFICATIONS

Absolute Maximum Ratings

$V_{SS} = 0 \text{ V}$

Parameter	Symbol	Rating	Unit
Supply voltage range	V_{DD}	-0.3 to 7.0	V
Input voltage range	V_{IN}	-0.3 to $V_{DD} + 0.3$	V
Power dissipation	P_D	500	mW
Storage temperature range	T_{stg}	-40 to 125	deg. C
Soldering temperature	T_{sld}	255	deg. C
Soldering time	t_{sld}	10	s

Recommended Operating Conditions

$V_{SS} = 0 \text{ V}$

Parameter	Symbol	Rating	Unit
Supply voltage range	V_{DD}	4.5 to 5.5	V
Operating temperature range	T_{opr}	-20 to 70	deg. C

DC Electrical Characteristics

$V_{DD} = 4.5 \text{ to } 5.5 \text{ V}$, $T_a = -20 \text{ to } 70 \text{ deg. C}$, $V_{SS} = 0 \text{ V}$ unless otherwise noted

Parameter	Symbol	Condition	Rating			Unit
			min	typ	max	
Standby current consumption	I_S	$V_{IN} = V_{DD} \text{ or } 0 \text{ V}$	-	-	1.0	μA
Operating current consumption	I_{DD}	$V_{DD} = 5 \text{ V}$, $f = 30 \text{ MHz}$, all outputs open	-	-	20	mA
HIGH-level input voltage	V_{IH}	See notes 1 and 2.	2.4	-	-	V
LOW-level input voltage	V_{IL}	See notes 1 and 2.	-	-	0.5	V
HIGH-level output voltage	V_{OH}	$I_{OH} = -1.0 \text{ mA}$. See notes 2 and 3.	2.5	-	-	V

SM5823AP

Parameter	Symbol	Condition	Rating			Unit
			min	typ	max	
LOW-level output voltage	V _{OL1}	See notes 2 and 3. I _{OL} = 4.0 mA	-	-	0.4	V
	V _{OL2}		I _{OL} = 16.0 mA	-	-	
HIGH-level input current	I _{IH}	V _{IN} = V _{DD} . See note 1.	-	-	1.0	μA
LOW-level input current	I _{IL}	V _{IN} = 0 V. See note 1.	-	10	20	μA
High-impedance output HIGH-level leakage current	I _{ZH}	V _{OE\bar{P}} = V _{OEAC} = V _{OE\bar{B}D} = V _{IH} , V _{OUT} = V _{DD} . See note 2.	-	-	5.0	μA
HIGH-impedance output LOW-level leakage current	I _{ZL}	V _{OE\bar{P}} = V _{OEAC} = V _{OE\bar{B}D} = V _{IH} , V _{OUT} = 0 V. See note 2.	-	-	5.0	μA

Notes

1. Pins S11, S12, SC1, SC2, $\overline{LC1}$, TR/ \overline{HD} , SF/ \overline{LD} , \overline{OEP} , \overline{OEAC} and \overline{OEBD} are TTL-level inputs with pull-up resistances.
2. Pins S10A, S10B, S10C, S10D and PIO0 to PIO23 are TTL-level input/outputs.
3. Pins SO1 and SO2 are TTL-level outputs.

AC Electrical characteristics

V_{DD} = 4.5 to 5.5 V, T_a = -20 to 70 deg. C, V_{SS} = 0 V unless otherwise noted

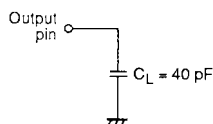
Parameter	Symbol	Condition	Rating			Unit
			min	typ	max	
SC1 and SC2 shift clock frequency	f _{SC}	50% duty. See figures 1 and 2.	0	-	30	MHz
S11 to SC1 setup time	t _{S1}	See figure 1.	15	-	-	ns
S11 to SC1 hold time	t _{H1}		0	-	-	ns
S12 to SC2 setup time	t _{S2}	See figure 2.	20	-	-	ns
S12 to SC2 hold time	t _{H2}		0	-	-	ns
SC1 to $\overline{LC1}$ setup time	t _{S3A}	See figure 3.	15	-	-	ns
	t _{S3B}		5	-	-	
SF/ \overline{LD} to SC2 setup time	t _{S4}	See figure 4.	15	-	-	ns
SF/ \overline{LD} to SC2 hold time	t _{H4}		0	-	-	ns
S10A, S10B to SC1 setup time	t _{S5}	See figure 5.	20	-	-	ns
S10A, S10B to SC1 hold time	t _{H5}		0	-	-	ns
S10C, S10D to SC2 setup time	t _{S6}	See figure 6.	20	-	-	ns
S10C, S10D to SC2 hold time	t _{H6}		0	-	-	ns
PIO _n to SC2 setup time	t _{S7}	V _{TR/\overline{HD}} = V _{IH} . See figure 7.	30	-	-	ns
PIO _n to SC2 hold time	t _{H7}		0	-	-	ns
PIO _n to TR/ \overline{HD} setup time	t _{S8}	See figure 8.	20	-	-	ns
PIO _n to TR/ \overline{HD} hold time	t _{H8}		0	-	-	ns
SC1 and SC2 pulsewidth	t _{W1}	See figures 1 and 2.	15	-	-	ns
$\overline{LC1}$ pulsewidth	t _{W2}	See figure 3.	20	-	-	ns

SM5823AP

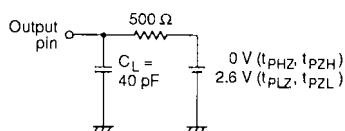
Parameter	Symbol	Condition	Rating			Unit
			min	typ	max	
TR/HD pulsewidth	t_{w3}	See figure 8.	20	–	–	ns
$\overline{OE\overline{P}}$ pulsewidth	t_{w4}	See figure 14.	40	–	–	ns
\overline{OEAC} and $\overline{OE\overline{BD}}$ pulsewidth	t_{w5}	See figure 15.	40	–	–	ns
Clock rise time	t_r	See figures 1 and 2.	–	–	100	ns
Clock fall time	t_f		–	–	100	ns
PIO0 to PIO23 output propagation delay time	t_{PLH1}	See note 1. See figure 9.	–	–	60	ns
	t_{PHL1}		–	–	60	
SIOA and SIOB output propagation delay time	t_{PLH2}	See note 1. See figure 10.	–	–	40	ns
	t_{PHL2}		–	–	40	
SIOC and SIOD output propagation delay time	t_{PLH3}	See note 1. See figure 11.	–	–	40	ns
	t_{PHL3}		–	–	40	
SO1 output propagation delay time	t_{PLH4}	See note 1. See figure 12.	–	–	35	ns
	t_{PHL4}		–	–	35	
SO2 output propagation delay time	t_{PLH5}	See note 1. See figure 13.	–	–	35	ns
	t_{PHL5}		–	–	35	
PIO0 to PIO23 enable propagation delay time	t_{PZL1}	See note 2. See figure 14.	–	–	50	ns
	t_{PZH1}		–	–	50	
PIO0 to PIO23 disable propagation delay time	t_{PLZ1}	See note 2. See figure 14.	–	–	50	ns
	t_{PHZ1}		–	–	50	
SIOA to SIOD enable propagation delay time	t_{PZL2}	See note 2. See figure 15.	–	–	40	ns
	t_{PZH2}		–	–	40	
SIOA to SIOD disable propagation delay time	t_{PLZ2}	See note 2. See figure 15.	–	–	40	ns
	t_{PHZ2}		–	–	40	
Input capacitance	C_{in}	$f = 1 \text{ MHz}$	–	–	10	pF
Input/output capacitance	C_{io}	$f = 1 \text{ MHz}, V_{OE\overline{P}} = V_{OEAC} = V_{OE\overline{BD}} = V_{IH}$	–	–	20	pF

Notes

1. Measurement circuit 1



2. Measurement circuit 2



Timing Characteristics

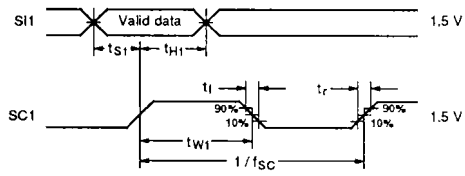


Figure 1.

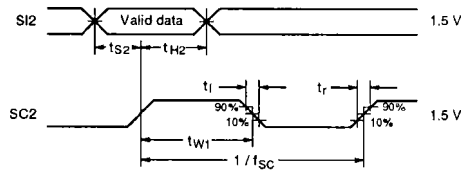


Figure 2.

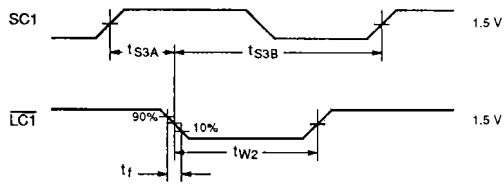


Figure 3.

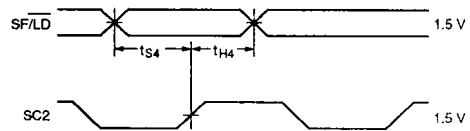


Figure 4.

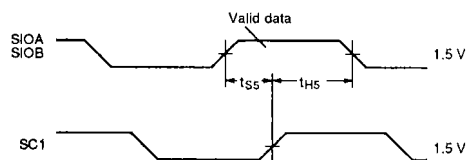


Figure 5.

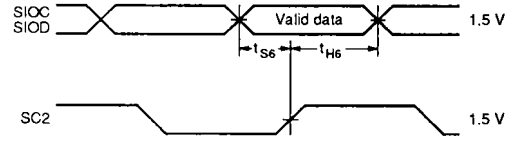


Figure 6.

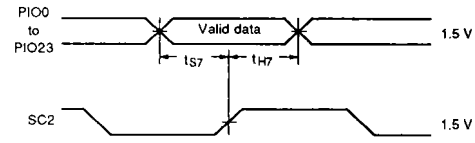


Figure 7.

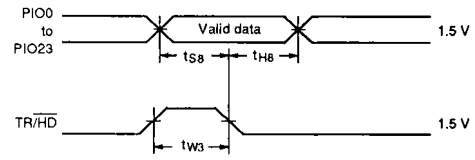


Figure 8.

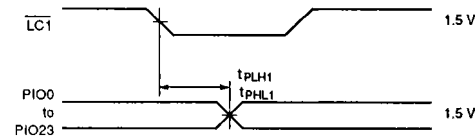


Figure 9.

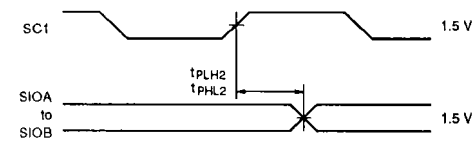


Figure 10.

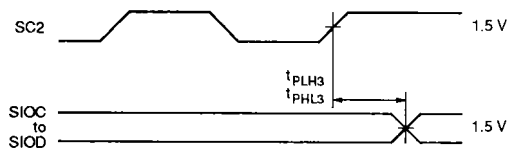


Figure 11.

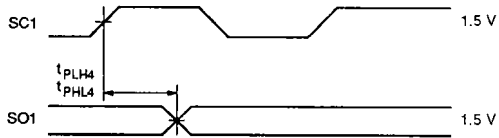


Figure 12.

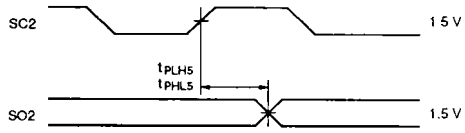


Figure 13.

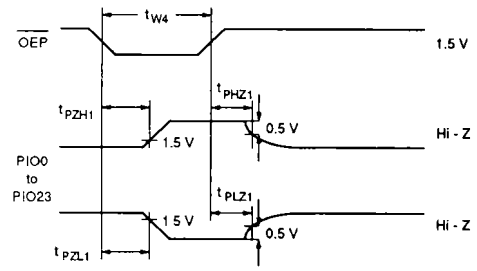


Figure 14.

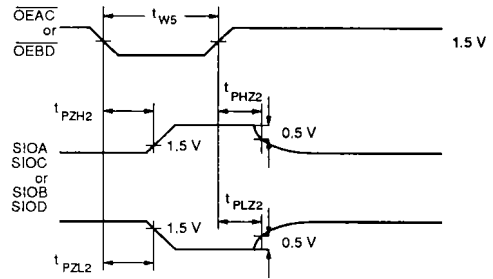


Figure 15.

SM5823AP

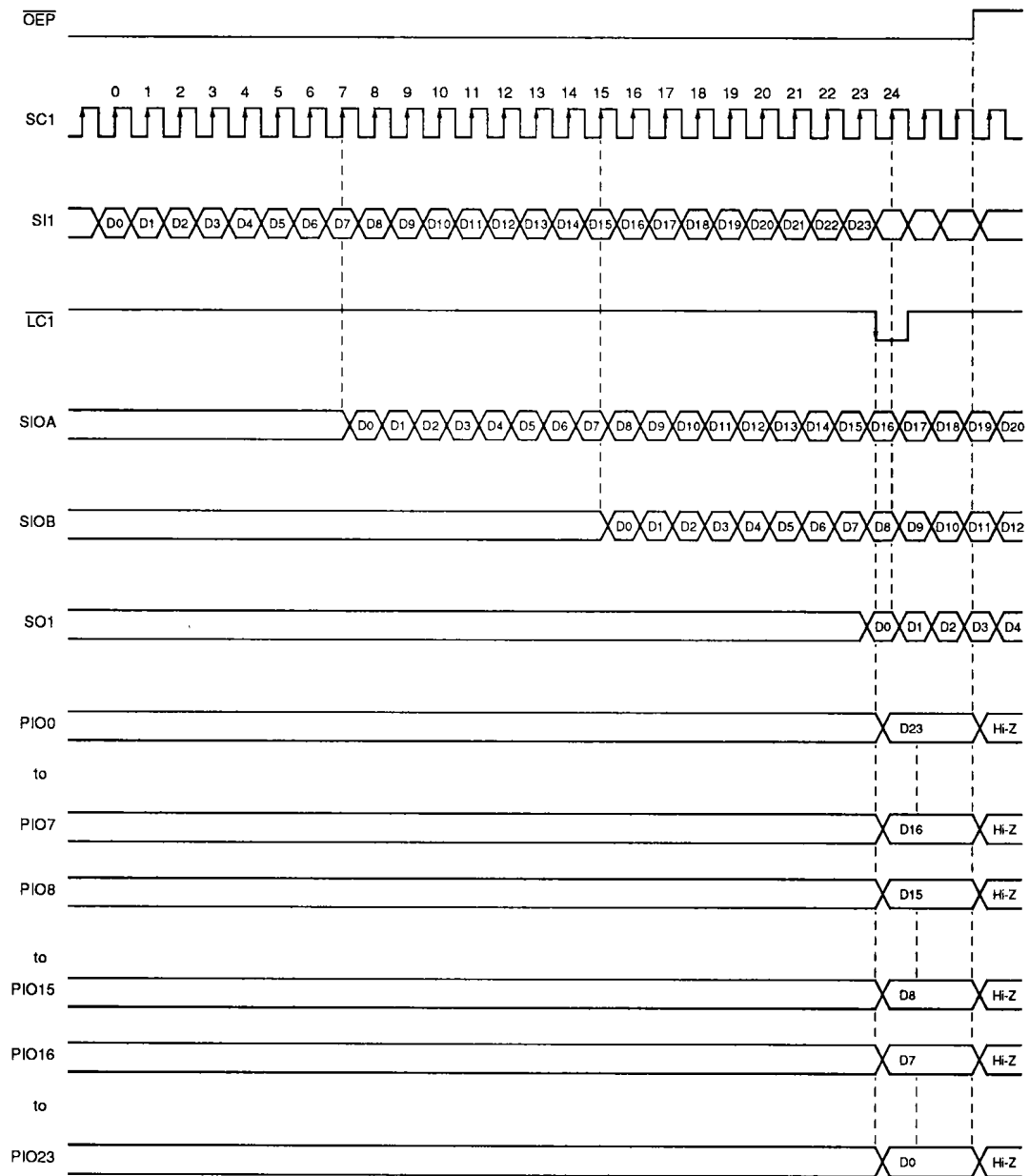


Figure 16. 24-bit SIPO ($\overline{\text{OEAC}} = \text{LOW}$, $\overline{\text{OEBD}} = \text{LOW}$)

SM5823AP

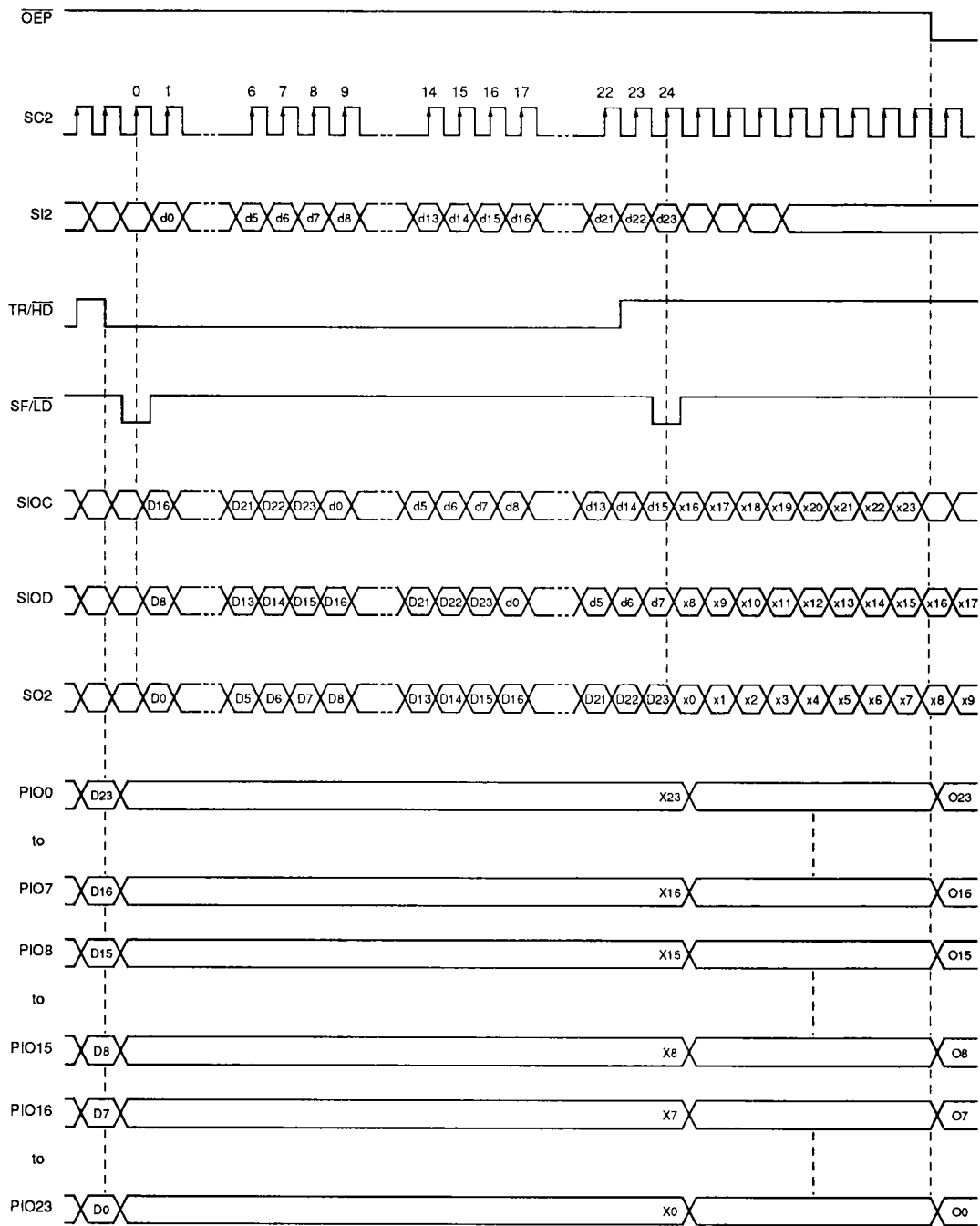


Figure 17. 24-bit PISO ($\overline{\text{OEAC}} = \text{LOW}$, $\overline{\text{OEBD}} = \text{LOW}$)

FUNCTIONAL DESCRIPTION

Serial-to-parallel Converter Mode ($\overline{OEP} = \text{LOW}$)

In this mode, the levels on \overline{OEAC} and \overline{OEBD} define a further four sub-modes. These sub-modes determine the configuration of three 8-bit shift registers making up the serial-to-parallel converter.

Mode name	\overline{OEAC}	\overline{OEBD}	Function
SPM1	LOW	LOW	1 × (24-bit serial → 24-bit parallel)
SPM2	LOW	HIGH	1 × (16-bit serial → 16-bit parallel) AND 1 × (8-bit serial → 8-bit parallel)
SPM3	HIGH	LOW	1 × (8-bit serial → 8-bit parallel) AND 1 × (16-bit serial → 16-bit parallel)
SPM4	HIGH	HIGH	3 × (8-bit serial → 8-bit parallel)

The mode selected determines which input(s) of S11, S10A and S10B will function as a serial data input. Data is shifted on the rising edge of SC1.

The shift register (SIPO) output data from each SIPO is latched into general-purpose registers in 8-bit units on the falling edge of the data latch clock, $\overline{LC1}$.

Data is output on consecutive outputs from PIO0 up to PIO23, depending on the mode selected.

Parallel-to-serial Converter Mode ($\overline{OEP} = \text{HIGH}$)

In this mode, the levels on \overline{OEAC} and \overline{OEBD} define a further four sub-modes. These sub-modes determine the configuration of three 8-bit shift registers making up the parallel-to-serial converter.

Mode name	\overline{OEAC}	\overline{OEBD}	Function
PSM1	LOW	LOW	1 × (24-bit parallel → 24-bit serial) OR 3 × (8-bit parallel → 8-bit serial)
PSM2	LOW	HIGH	2 × (8-bit parallel → 8-bit serial)
PSM3	HIGH	LOW	1 × 16-bit parallel → 16-bit serial) OR 2 × (8-bit parallel → 8-bit serial)
PSM4	HIGH	HIGH	1 × (8-bit parallel → 8-bit serial)

The parallel input data is input on consecutive inputs from PIO0 up to PIO23, depending on the mode selected.

Input parallel data is passed directly to the PISO shift registers when $\overline{TR/HD}$ is HIGH (transparent mode). The input data is latched when $\overline{TR/HD}$ goes LOW.

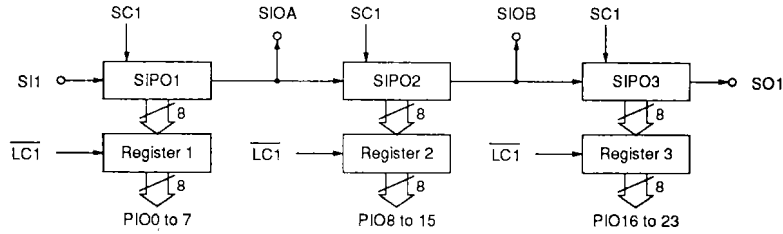
Data is loaded into the PISO registers when $\overline{SF/LD}$ goes LOW, and shifting is enabled when $\overline{SF/LD}$ goes HIGH. Data is shifted in three 8-bit units on the rising edge of the data shift clock, SC2.

The mode selected determines which output(s) of SO2, S10C and S10D will function as a serial output.

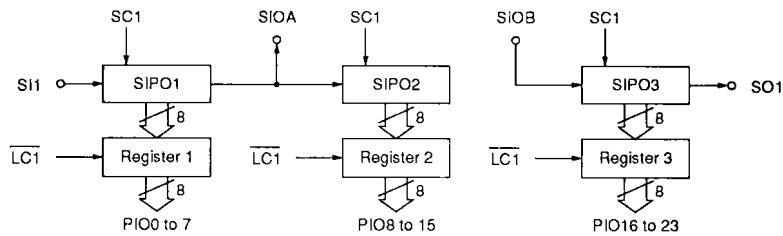
Mode Selection

Serial-to-parallel converter mode ($\overline{\text{OEP}} = \text{LOW}$)

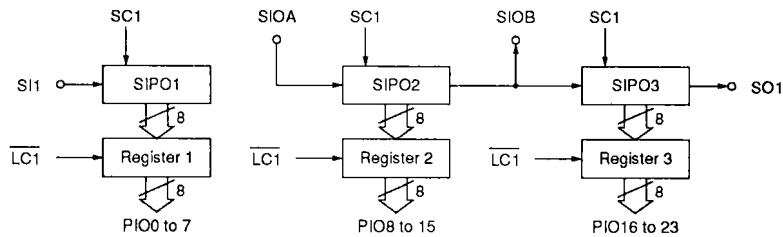
SPM1 ($\overline{\text{OEAC}} = \text{LOW}$, $\overline{\text{OEBD}} = \text{LOW}$)



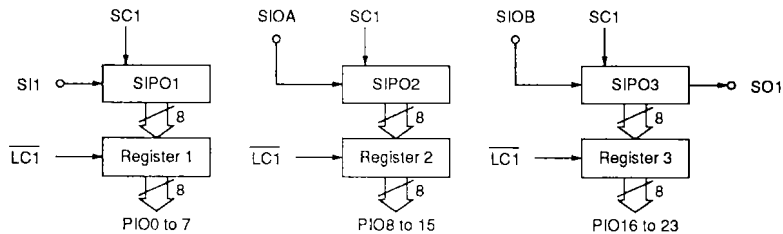
SPM2 ($\overline{\text{OEAC}} = \text{LOW}$, $\overline{\text{OEBD}} = \text{HIGH}$)



SPM3 ($\overline{\text{OEAC}} = \text{HIGH}$, $\overline{\text{OEBD}} = \text{LOW}$)

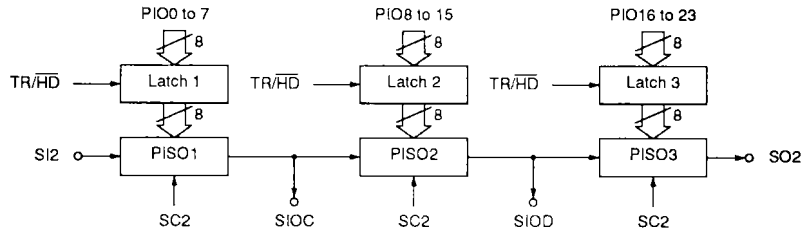


SPM4 ($\overline{\text{OEAC}} = \text{HIGH}$, $\overline{\text{OEBD}} = \text{HIGH}$)

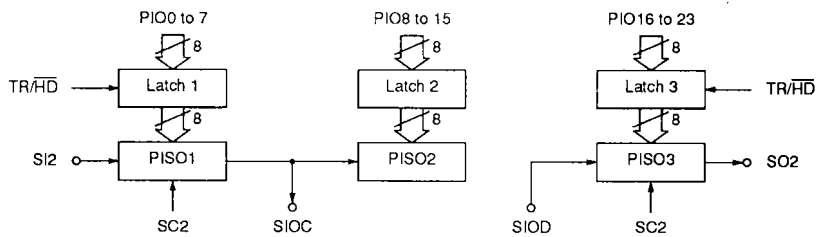


Parallel-to-serial converter mode ($\overline{\text{OEP}} = \text{HIGH}$)

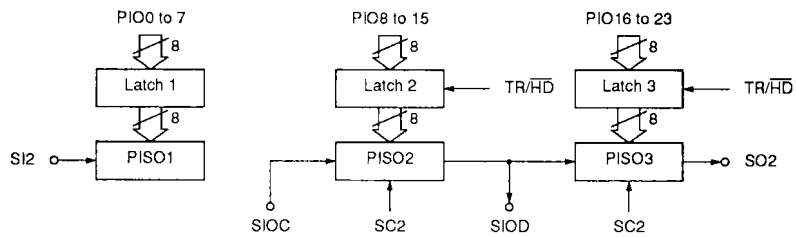
PSM1 ($\overline{\text{OEAC}} = \text{LOW}$, $\overline{\text{OEBD}} = \text{LOW}$)



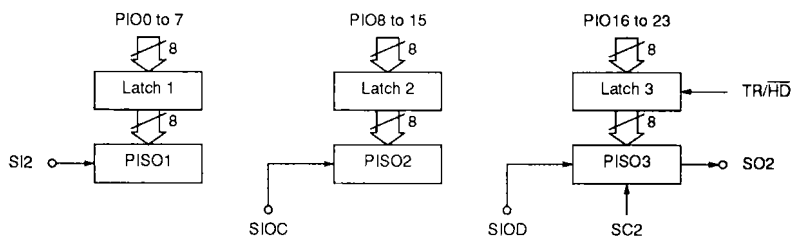
PSM2 ($\overline{\text{OEAC}} = \text{LOW}$, $\overline{\text{OEBD}} = \text{HIGH}$)



PSM3 ($\overline{\text{OEAC}} = \text{HIGH}$, $\overline{\text{OEBD}} = \text{LOW}$)

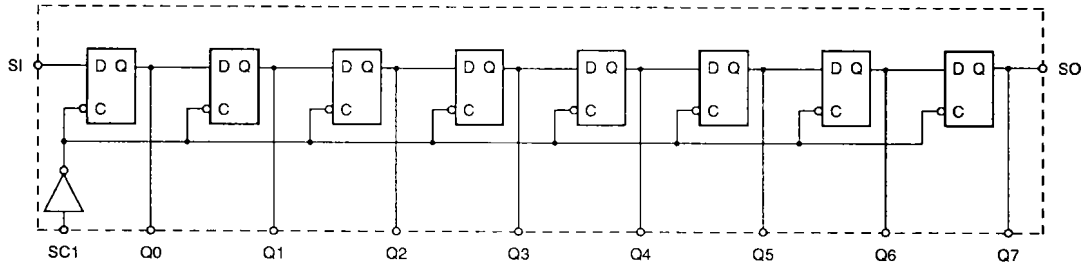


PSM4 ($\overline{\text{OEAC}} = \text{HIGH}$, $\overline{\text{OEBD}} = \text{HIGH}$)

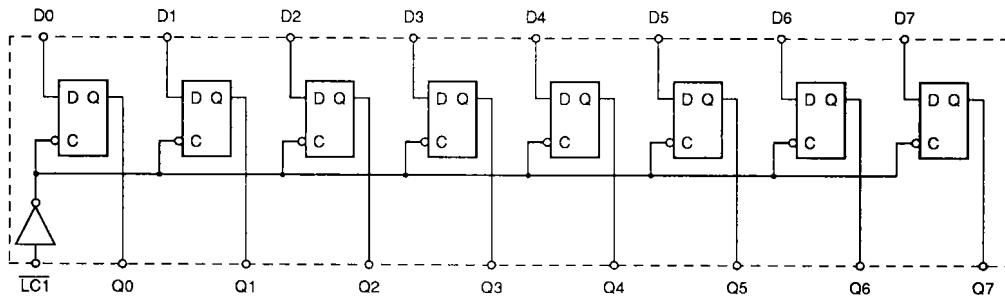


Equivalent Circuits

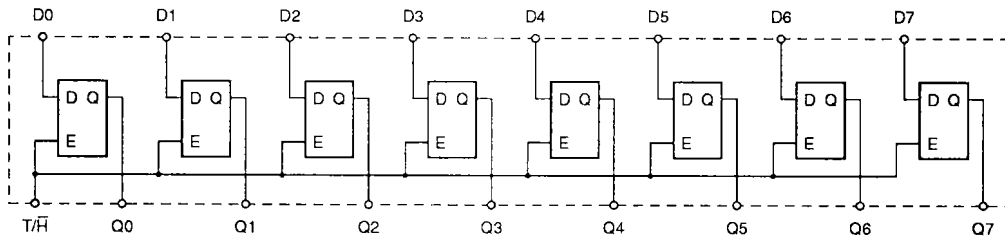
8-bit SIPO



8-bit register

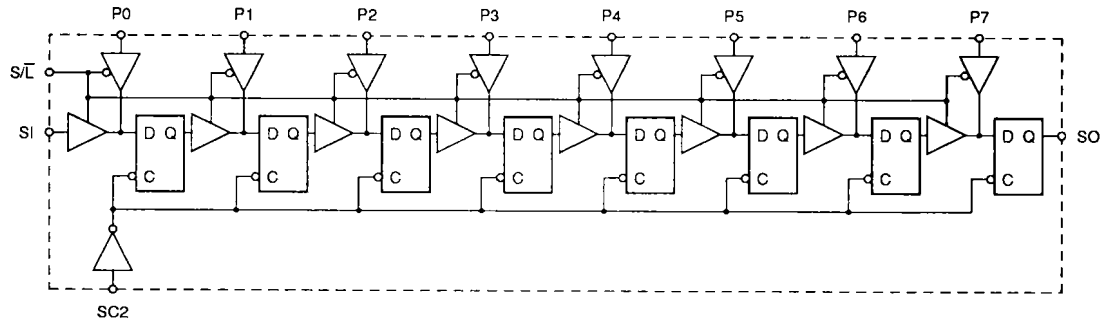


8-bit latch



SM5823AP

8-bit PISO



NIPPON PRECISION CIRCUITS LTD. reserves the right to make changes to the products contained in this data sheet in order to improve the design or performance and to supply the best possible products. Nippon Precision Circuits Ltd. assumes no responsibility for the use of any circuits shown in this data sheet, conveys no license under any patent or other rights, and makes no claim that the circuits are free from patent infringement. Applications for any devices shown in this data sheet are for illustration only and Nippon Precision Circuits Ltd. makes no claim or warranty that such applications will be suitable for the use specified without further testing or modification.

NPC
NIPPON PRECISION CIRCUITS LTD.

NIPPON PRECISION CIRCUITS LTD.

3-9, Taihei 4-chome
Sumida-ku, Tokyo 130, Japan
Telephone: 03-5608-5571
Facsimile: 03-5608-5566

NC890/8E1993.10