

Coaxial Low Pass Filter

DC to 1125 MHz (40 dB Isolation up to 20 GHz)

NEW!
VLFX-1125

Maximum Ratings

Operating Temperature -55°C to 100°C

Storage Temperature -55°C to 100°C

RF Power Input* 10W max. at 25°C

*Passband rating, derate linearly to 3.5W at 100°C ambient.

Features

- very good isolation, 40 dB up to 20 GHz
- 21 sections
- temperature stable LTCC internal structure
- patent pending
- re-entry frequency > 20 GHz
- rugged stainless steel unibody

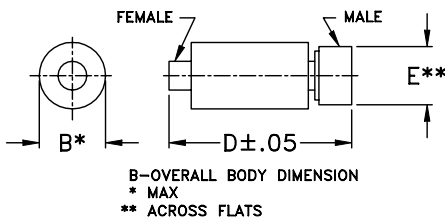


CASE STYLE: FF1118
PRICE: \$ 39.95 ea. QTY (1-9)

Applications

- harmonic rejection
- transmitters/receivers
- lab use
- test instrumentation

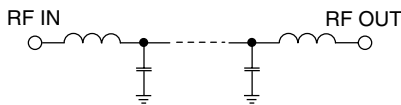
Outline Drawing



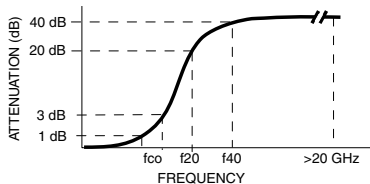
Outline Dimensions (inch/mm)

B	D	E	wt.
.39	2.67	.312	grams
9.91	67.82	7.92	17.0

Functional Schematic



Typical Frequency Response



Low Pass Filter Electrical Specifications @ 25°C

MODEL NO.	PASSBAND (MHz) (Loss < 1.2dB) Max.	fco, MHz Nom (Loss 3 dB) Typ	STOPBAND (MHz) (Loss, dB)		VSWR (:1)		NO. OF SECTIONS
			f20 Min.	f40 Typ.	Stopband Typ.	Passband Typ.	
VLFX-1125	DC-1125	1825	2125	2350-20000	10	1.4	21

Typical Performance Data @ 25°C

Frequency (MHz)	Insertion Loss (dB)	VSWR (:1)
50	0.20	1.05
250	0.29	1.06
500	0.47	1.05
1100	0.98	1.41
1150	1.02	1.44
1250	1.22	1.50
1500	1.51	1.47
1850	3.24	1.76
1950	7.42	3.84
2075	20.60	8.71
2250	39.02	13.93
4000	87.43	33.59
6000	73.04	64.26
8000	78.45	48.12
10000	71.93	40.02
12000	57.91	20.21
14000	49.00	15.03
16000	81.35	24.55
18000	64.13	22.79
20000	73.49	2.20

