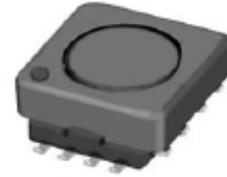
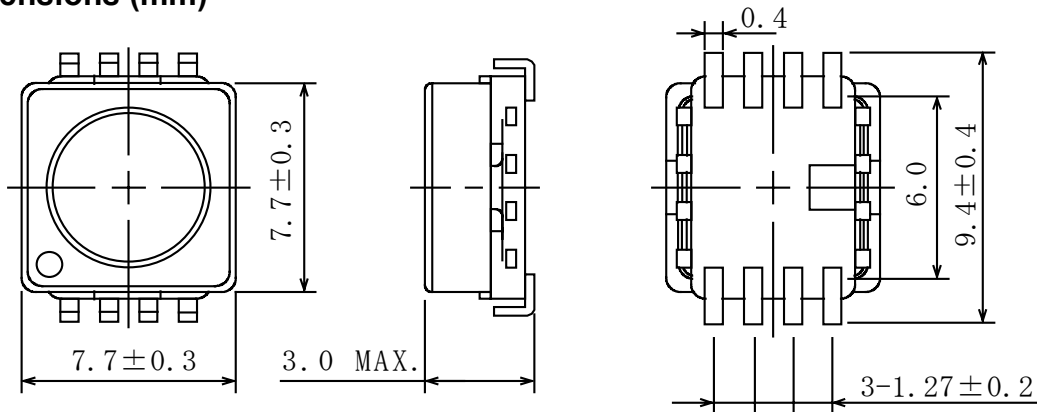
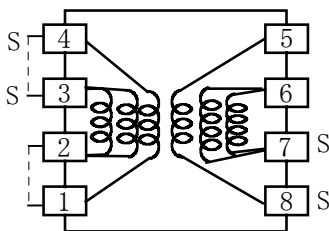


Type: CLQ7D27
◆ Product Description

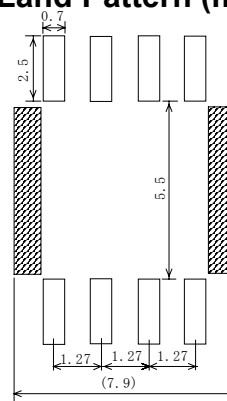
- 8.0×8.0mm Max.(L×W), 3.0mm Max. Height.
- In addition to the typical versions of parameters shown here, custom designs are available to meet your exact requirements


◆ Feature

- Magnetically shielded construction.
- Max. Operating frequency 1MHz.
Max Operating power 2.0W (1MHz), 1.0W(500kHz), 640mW(00kHz).
- Ideally used in LCD TV, Digital video camera, Digital still camera.
- RoHS Compliance

◆ Dimensions (mm)

◆ Schematics (Bottom)


“S” indicates winding start.

◆ Land Pattern (mm)

◆ Specification

Sample No.	Inductance (3-2) (1kHz/1V)	D.C.R. (3-2)	D.C.R. (6-7)
4357-T236	$18.5 \mu H \pm 30\%$ within	$465m \Omega$ Max.	$915m \Omega$ Max.