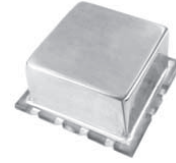


POWER DIVIDERS

0° : 5-WAY



SURFACE MOUNT

FREQUENCY RANGE (MHz)	ISOLATION (dB)			INSERTION LOSS (dB)			PHASE UNBALANCE (Degrees)			AMPLITUDE UNBALANCE (dB)			PACKAGE	PIN-OUT (See Below)	MODEL
	LB TYP/MIN	MB TYP/MIN	UB TYP/MIN	LB TYP/MAX	MB TYP/MAX	UB TYP/MAX	LB MAX	MB MAX	UB MAX	LB MAX	MB MAX	UB MAX			
0.05-30	28/20	30/25	25/20	0.4/0.8	0.3/0.7	0.6/1.0	4.0	4.0	4.0	0.3	0.3	0.3	124S	1	DES-901
1-300	25/20	23/18	20/17	0.2/0.5	0.6/1.0	1.5/2.0	2.0	4.0	8.0	0.2	0.3	0.6	124S	1	DES-9G2



THROUGH HOLE MOUNT(16-Pin)

FREQUENCY RANGE (MHz)	ISOLATION (dB)			INSERTION LOSS (dB)			PHASE UNBALANCE (Degrees)			AMPLITUDE UNBALANCE (dB)			PACKAGE	PIN-OUT (See Below)	MODEL
	LB TYP/MIN	MB TYP/MIN	UB TYP/MIN	LB TYP/MAX	MB TYP/MAX	UB TYP/MAX	LB MAX	MB MAX	UB MAX	LB MAX	MB MAX	UB MAX			
0.05-30	28/20	30/25	25/20	0.4/0.8	0.3/0.7	0.6/1.0	4.0	4.0	4.0	0.3	0.3	0.3	124	2	DEP-901
1-300	25/20	23/18	20/17	0.2/0.5	0.6/1.0	1.5/2.0	2.0	4.0	8.0	0.2	0.3	0.6	124	2	DEP-9G2



COAXIAL CONNECTOR

FREQUENCY RANGE (MHz)	ISOLATION (dB)			INSERTION LOSS (dB)			PHASE UNBALANCE (Degrees)			AMPLITUDE UNBALANCE (dB)			PACKAGE	PIN-OUT (See Below)	MODEL
	LB TYP/MIN	MB TYP/MIN	UB TYP/MIN	LB TYP/MAX	MB TYP/MAX	UB TYP/MAX	LB MAX	MB MAX	UB MAX	LB MAX	MB MAX	UB MAX			
0.05-30	25/20	30/25	25/20	0.5/0.9	0.3/0.7	0.6/1.0	4.0	4.0	4.0	0.3	0.3	0.3	157	3	DEK-701*
1-300	25/20	23/18	20/17	0.2/0.5	0.6/1.0	1.5/2.0	2.0	4.0	8.0	0.2	0.3	0.6	157	3	DEK-7G2*

Power Rating (All Models) = 1 Watt, max

* Select female connector suffix: "B" = BNC, "S" = SMA, "N" = Type N, "T" = TNC
For pin location and package outline drawings, see back pages.

LB = LF to 10 LF
MB = 10 LF to HF/2
UB = HF/2 to HF

PIN-OUT TABLE

	INPUT	OUTPUT	CASE GROUND	NO CONN.
#1	1	4,8,12,15,16	2,5,13,14	3,9
#2	1	4,8,12,15,16	2,5,7,11,13,14	3,6,9,10
#3	1	2,3,4,5,6	-	-