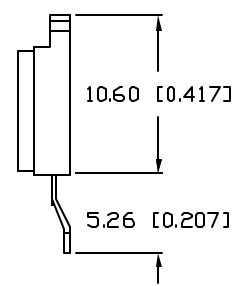
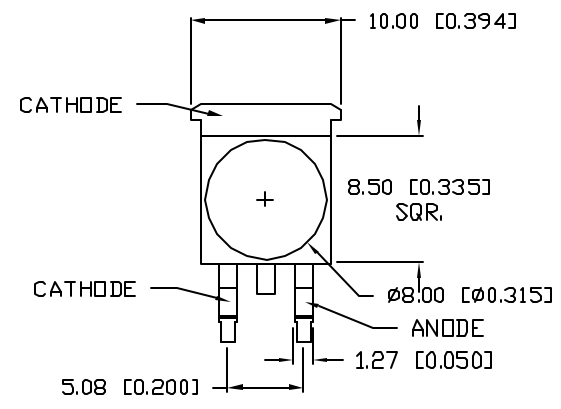
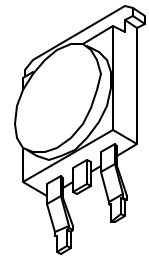
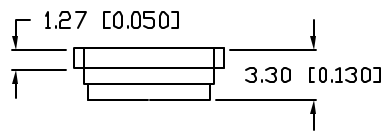


UNCONTROLLED DOCUMENT

| | | |
|-----------------|-------------------------------------|----------|
| PART NUMBER | | REV. |
| SML-LX1610UWC/A | | A |
| REV. | E.C.N. NUMBER AND REVISION COMMENTS | DATE |
| A | E.C.N. #11388. | 01.11.07 |



ELECTRO-OPTICAL CHARACTERISTICS $T_A=25^{\circ}\text{C}$ $I_f=350\text{mA}$

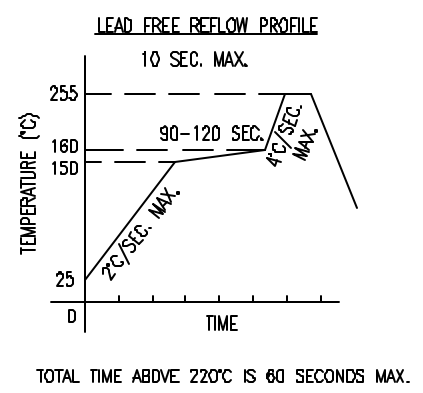
| PARAMETER | SYMBOL | MIN | TYP | MAX | UNITS | TEST COND |
|---------------------|--------|-------------|-----|------|---------------------------|---------------------|
| PEAK WAVELENGTH | | | - | | nm | |
| FORWARD VOLTAGE | V_f | | 3.5 | 4.0 | V | $I_f=350\text{mA}$ |
| REVERSE VOLTAGE | V_r | 5 | | | V | $I_f=10\mu\text{A}$ |
| AXIAL INTENSITY(*1) | I_v | | 30 | | lm | $I_f=350\text{mA}$ |
| COLOR TEMP. | | 3000 | | 9000 | | $I_f=350\text{mA}$ |
| VIEWING ANGLE | | | 110 | | $2x \theta_{\text{half}}$ | |
| EMITTED COLOR: | | WHITE | | | | |
| EPOXY LENS FINISH: | | WATER CLEAR | | | | |

*1. AXIAL INTENSITY TESTING CONDITION: 550nm WAVELENGTH.
*2. THE ICI STANDARD COLORIMETRIC SYSTEM.

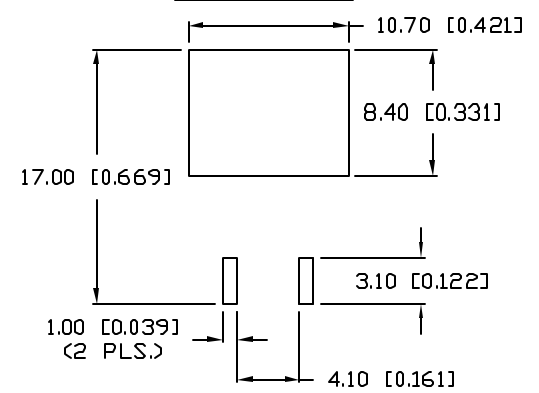
LIMITS OF SAFE OPERATION AT 25°C

| PARAMETER | SYMBOL | MAX | UNITS |
|-----------------------|-----------|------------|-------|
| PULSE FORWARD CURRENT | I_p | 500 | mA |
| STEADY CURRENT | I_f | 350 | mA |
| POWER DISSIPATION | P_d | 1.5 | W |
| OPERATING TEMP. | T_{OPR} | -20 TO +70 | °C |
| STORAGE TEMP. | T_{STG} | -40 TO +85 | °C |

*DUTY 1/10 PULSE WIDTH 10ms



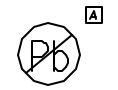
SOLDER PAD LAYOUT



CAUTION: STATIC SENSITIVE DEVICE
FOLLOW PROPER E.S.D. HANDLING PROCEDURES
WHEN WORKING WITH THIS PART.

NOTES:

1. 50 PCS. IN EACH TUBE.



UNCONTROLLED DOCUMENT

*UNLESS OTHERWISE SPECIFIED TOLERANCES PER DECIMAL PRECISION ARE: X=±1 (±0.039), XX=±0.5 (±0.020), XXX=±0.25 (±0.010), XXXX=±0.127 (±0.005). LEAD SIZE=±0.05 (±0.002), LEAD LENGTH=±0.75 (±0.030), MIN=+DECIMAL PRECISION MAX.=+0.00 -DECIMAL PRECISION

| | | | | | | | | | | | | | | | |
|---|--------------------------------|--|--|-----------------|-------------|--------------|---------------|--|--|--|--------------|--|--|--|------------|
| REV. A | PART NUMBER SML-LX1610UWC/A | CONFIDENTIAL INFORMATION THE INFORMATION CONTAINED IN THIS DOCUMENT IS THE PROPERTY OF LUMEX INC. EXCEPT AS SPECIFICALLY AUTHORIZED IN WRITING BY LUMEX INC., THE HOLDER OF THIS DOCUMENT SHALL KEEP ALL INFORMATION CONTAINED HEREIN CONFIDENTIAL AND SHALL PROTECT SAME IN WHOLE OR IN PART FROM DISCLOSURE AND DISSEMINATION TO ALL THIRD PARTIES. | 290 E. HELEN ROAD PALATINE, IL 60067-6976 PHONE: +1.847.359.2790 US WEB: www.lumex.com TW WEB: www.lumex.com.tw | | | | | | | | | | | | |
| 10.60 x 10mm HIGH POWER LED, ULTRA WHITE. | | RELIABILITY NOTE OUR MANY YEARS OF EXPERIENCE DATA ACCUMULATION INDICATE THAT SOLDER HEAT IS A MAJOR CAUSE OF EARLY AND FUTURE FAILURE. PLEASE PAY ATTENTION TO YOUR SOLDERING PROCESS. | <table border="1"> <tr> <td>DRAWN BY: JC</td> <td>CHECKED BY:</td> <td>APPROVED BY:</td> <td>DATE: 8.31.06</td> </tr> <tr> <td></td> <td></td> <td></td> <td>PAGE: 1 OF 1</td> </tr> <tr> <td></td> <td></td> <td></td> <td>SCALE: N/A</td> </tr> </table> | DRAWN BY: JC | CHECKED BY: | APPROVED BY: | DATE: 8.31.06 | | | | PAGE: 1 OF 1 | | | | SCALE: N/A |
| DRAWN BY: JC | CHECKED BY: | APPROVED BY: | DATE: 8.31.06 | | | | | | | | | | | | |
| | | | PAGE: 1 OF 1 | | | | | | | | | | | | |
| | | | SCALE: N/A | | | | | | | | | | | | |