



Click to see this datasheet
in Simplified Chinese!



April 2008

FSA2467 — 0.4Ω Low-Voltage Dual DPDT Analog Switch

FSA2467

0.4Ω Low-Voltage Dual DPDT Analog Switch

Features

- Typical 0.4Ω On Resistance (R_{ON}) for +2.7V supply
- Features Less than 12μA I_{CC} Current when Sn Input is Lower than V_{CC}
- 0.25Ω Maximum R_{ON} Flatness for +2.7V Supply
- 3x3mm 16-Lead Pb-Free MLP Package
- 1.8x2.6mm 16-Lead Pb-Free UMLP Package
- Broad V_{CC} Operating Range
- Low THD (0.02% Typical for 32Ω Load)

Description

The FSA2467 is a dual Double-Pole, Double-Throw (DPDT) analog switch. The FSA2467 operates from a single 1.65V to 4.3V supply. The FSA2467 features an ultra-low on resistance of 0.4Ω at a +2.7V supply and 25°C. This device is fabricated with sub-micron CMOS technology to achieve fast switching speeds and is designed for break-before-make operation.

FSA2467 features very low quiescent current even when the control voltage is lower than the V_{CC} supply. This feature allows mobile handset applications direct interface with baseband processor general-purpose I/Os.

Applications

- Cell Phone
- PDA
- Portable Media Player

Ordering Information

Part Number	Package Description
FSA2467MPX	16-lead Molded Leadless Package (MLP), JEDEC MO-220, 3x3mm Square
FSA2467UMX	16-lead Ultrathin Molded Leadless Package (UMLP), 1.8x2.6mm

All packages are lead free per JEDEC: J-STD-020B standard.

Application Diagram

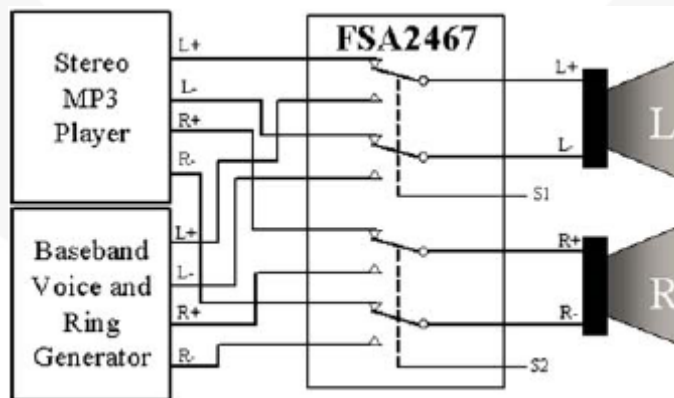


Figure 1. Application Diagram

Pin Assignments

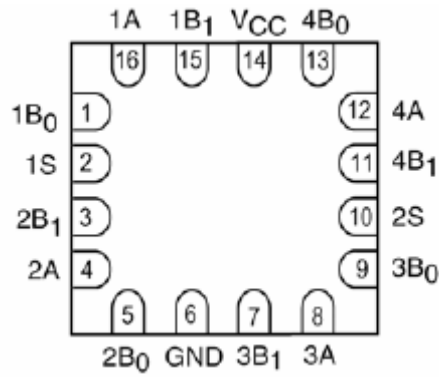


Figure 2. Pin Assignments

Truth Table

Control Inputs	Function
LOW	nB_0 Connected to nA
HIGH	nB_1 Connected to nA

Pin Descriptions

Name	Function
nA , nB_0 , nB_1	Data Ports
nS	Control Input

Analog Symbol

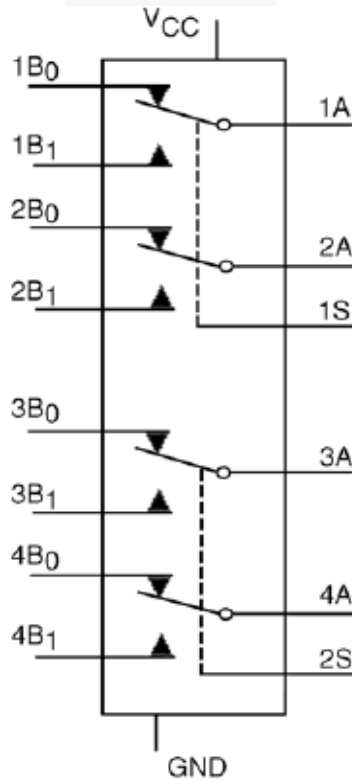


Figure 3. Analog Symbol

Absolute Maximum Ratings

Stresses exceeding the absolute maximum ratings may damage the device. The device may not function or be operable above the recommended operating conditions and stressing the parts to these levels is not recommended. In addition, extended exposure to stresses above the recommended operating conditions may affect device reliability. The absolute maximum ratings are stress ratings only.

Symbol	Parameter	Min.	Max.	Unit
V_{CC}	Supply Voltage	-0.5	4.6	V
V_S	Switch Voltage	-0.5	$V_{CC}+0.3$	V
V_{IN}	Input Voltage	-0.5	4.6	V
I_{IK}	Input Diode Current	-50		mA
I_{SW}	Switch Current		350	mA
I_{SWPEAK}	Peak Switch Current (Pulsed at 1ms duration, <10% Duty Cycle)		500	mA
T_{STG}	Storage Temperature Range	-65	+150	°C
T_J	Junction Temperature		+150	°C
T_L	Lead Temperature, Soldering 10 Seconds		+260	°C
ESD	Human Body Model		5.5	kV

Recommended Operating Conditions

The Recommended Operating Conditions table defines the conditions for actual device operation. Recommended operating conditions are specified to ensure optimal performance to the datasheet specifications. Fairchild does not recommend exceeding them or designing to Absolute Maximum Ratings.

Symbol	Parameter	Min.	Max.	Unit
V_{CC}	Supply Voltage	1.65	4.30	V
V_{IN}	Control Input Voltage ⁽¹⁾	0	V_{CC}	V
V_{IN}	Switch Input Voltage	0	V_{CC}	V
T_A	Operating Temperature	-40	+85	°C

Note:

1. Unused inputs must be held HIGH or LOW. They may not float.

DC Electrical Characteristics

Typical values are at 25°C unless otherwise specified.

Symbol	Parameter	Conditions	V _{CC} (V)	T _A = +25°C			T _A = -40 to +85°C		Units
				Min.	Typ.	Max.	Min	Max.	
V _{IH}	Input Voltage High		4.3				1.4		V
			2.7 to 3.6				1.3		
			2.3 to 2.7				1.1		
			1.65 to 1.95				0.9		
V _{IL}	Input Voltage Low		4.3					0.7	V
			2.7 to 3.6					0.5	
			2.3 to 2.7					0.4	
			1.65 to 1.95					0.4	
I _{IN}	Control Input Leakage	V _{IN} =0V to V _{CC}	1.65 to 4.30				-0.5	0.5	μA
I _{NO(OFF)} I _{NC(OFF)}	Off Leakage Current of Port nB ₀ and nB ₁	nA=0.3V, V _{CC} =0.3V nB ₀ or nB ₁ =0.3V, V _{CC} =0.3V or floating	1.95 to 4.30	-10.0		10.0	-50.0	50.0	nA
I _{A(ON)}	On Leakage Current of Port A	nA=0.3V, V _{CC} =0.3V nB ₀ or nB ₁ =0.3V, V _{CC} =0.3V or floating	1.95 to 4.30	-10.0		10.0	-50.0	50.0	nA
R _{ON}	Switch On Resistance ⁽²⁾	I _{OUT} =100mA	4.3		0.4			0.6	Ω
		nB ₀ or nB ₁ =0V, 0.8V, 1.8V, 2.7V	2.7		0.4			0.6	
		I _{OUT} =100mA, nB ₀ or nB ₁ =0V, 0.7V, 1.2V, 2.3V	2.3	0.55				0.95	
		I _{OUT} =100mA, nB ₀ or nB ₁ =1.0V	1.8	0.8				2.0	
ΔR _{ON}	On Resistance Matching Between Channels ⁽³⁾	I _{OUT} =100mA, nB ₀ or nB ₁ =0.8V	2.7	0.04				0.10	Ω
		I _{OUT} =100mA, nB ₀ or nB ₁ =0.7V	2.3	0.03				0.10	
R _{FLAT(ON)}	On Resistance Flatness ⁽⁴⁾	I _{OUT} =100mA, B ₀ or nB ₁ =0V to V _{CC}	2.7					0.25	Ω
			2.3					0.3	
I _{CC}	Quiescent Supply Current	V _{IN} =0V to V _{CC} I _{OUT} =0V	4.3	-100		100	-500	500	nA
I _{CCT}	Increase in I _{CC} Current per Control Voltage	V _{IN} =1.8V	4.3		7.0	12.0		15.0	μA
		V _{IN} =2.6V	4.3		3.0	6.0		7.0	

Notes:

- On resistance is determined by the voltage drop between A and B pins at the indicated current through the switch.
- Δ R_{ON}=R_{ON max} – R_{ON min} measured at identical V_{CC}, temperature and voltage.
- Flatness is defined as the difference between the maximum and minimum value of on resistance over the specified range of conditions.

AC Electrical Characteristics

Typical values are at 25°C unless otherwise specified.

Symbol	Parameter	Conditions	V _{CC}	T _A = +25°C			T _A = -40 to +85°C		Units	Figure
				Min.	Typ.	Max.	Min.	Max.		
t _{ON}	Turn-On Time	nB0 or nB1=1.5V	3.6 to 4.3			50		60	ns	Figure 7
		R _L =50Ω, C _L =35pF	2.7 to 3.6			65		75		
			2.3 to 2.7			80		90		
t _{OFF}	Turn-Off Time	nB0 or nB1=1.5V	3.6 to 4.3			32		40	ns	Figure 7
		R _L =50Ω, C _L =35pF	2.7 to 3.6			42		50		
			2.3 to 2.7			52		60		
t _{BBM}	Break-Before-Make Time	nB0 or nB1=1.5V	3.6 to 4.3		12				ns	Figure 8
		R _L =50Ω, C _L =35pF	2.7 to 3.6		15					
			2.3 to 2.7		20					
Q	Charge Injection	C _L =100pF, V _{GEN} =0V, R _{GEN} =0Ω	3.6 to 4.3		15				pC	Figure 10
		C _L =100pF, V _{GEN} =0V, R _{GEN} =0Ω	2.7 to 3.6		10					
		C _L =100pF, V _{GEN} =0V, R _{GEN} =0Ω	2.3 to 2.7		8					
OIRR	Off Isolation	f=100KHz, R _L =50Ω, C _L =5pF	3.6 to 4.3		-75				dB	Figure 9
			2.7 to 3.6		-75					
			2.3 to 2.7		-75					
Xtalk	Crosstalk	f=100KHz, R _L =50Ω, C _L =5pF	3.6 to 4.3		-75				dB	Figure 9
			2.7 to 3.6		-75					
			2.3 to 2.7		-75					
BW	-3dB Bandwidth	R _L =50Ω	2.3 to 4.3		85				MHZ	Figure 12
THD	Total Harmonic Distortion	R _L =32Ω, V _{IN} =2V _{PP} , f=20 to 20KHZ	3.6 to 4.3		0.02				%	Figure 13
		R _L =32Ω, V _{IN} =2V _{PP} , f=20 to 20KHZ	2.7 to 3.6		0.02					
		R _L =32Ω, V _{IN} =2V _{PP} , f=20 to 20KHZ	2.3. to 2.7		0.02					

Capacitance

Symbol	Parameter	Conditions	V _{CC}	T _A = +25°C Typical	Units	Figure
C _{IN}	Control Pin Input Capacitance	f=1MHZ	0	1.5	pF	Figure 7
C _{OFF}	B Port Off Capacitance	f=1MHZ	3.3	32	pF	Figure 7
C _{ON}	A Port On Capacitance	f=1MHZ	3.3	118	pF	Figure 7

Typical Applications

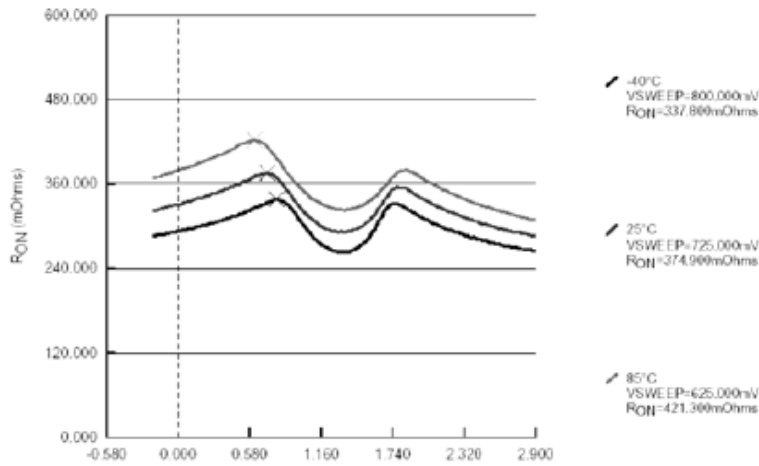


Figure 4. R_{ON} at 2.7V V_{CC}

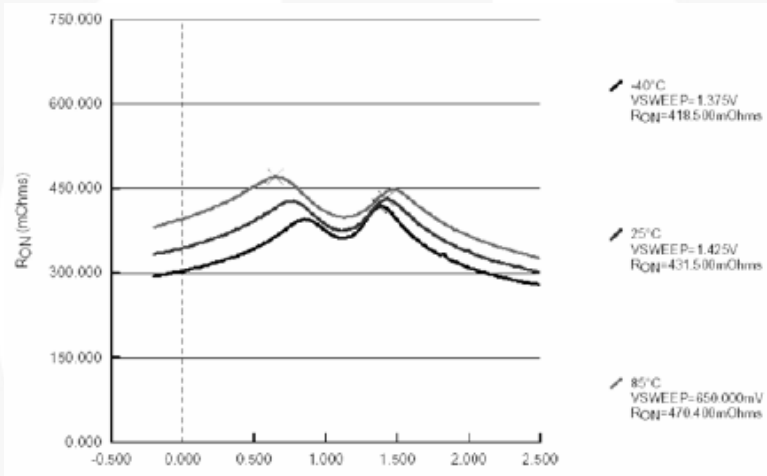


Figure 5. R_{ON} at 2.3V V_{CC}

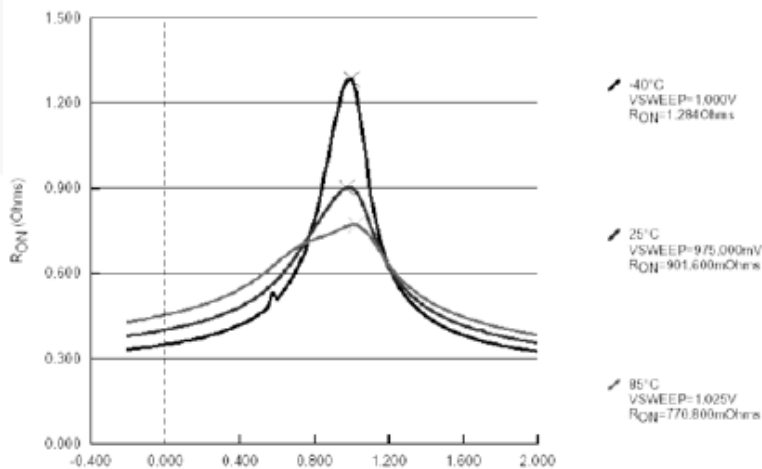
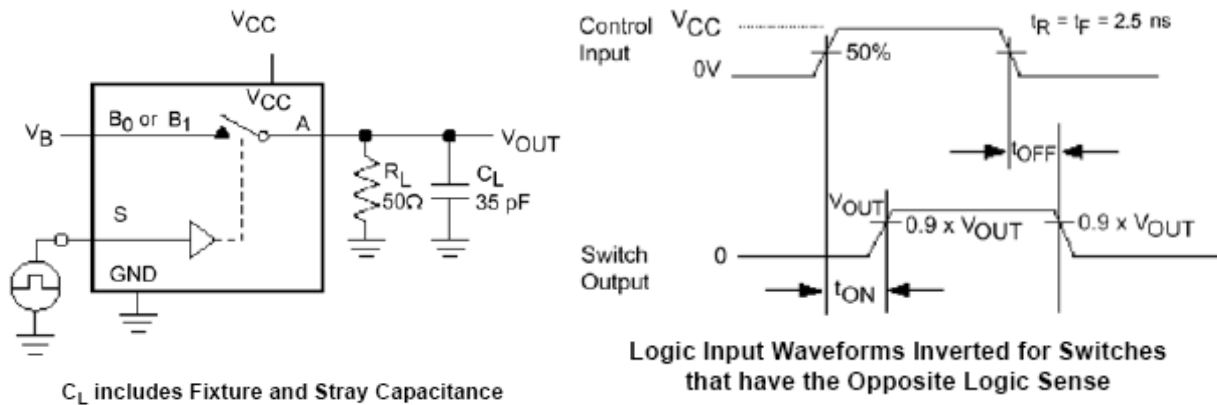


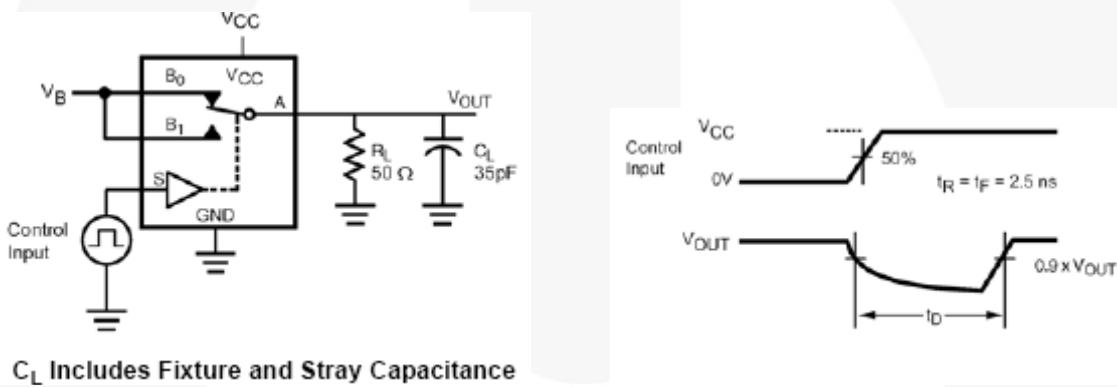
Figure 6. R_{ON} at 1.8V V_{CC}

AC Loadings and Waveforms



C_L includes Fixture and Stray Capacitance

Figure 7. Turn-On / Turn-Off Timing



C_L Includes Fixture and Stray Capacitance

Figure 8. Break-Before-Make Timing

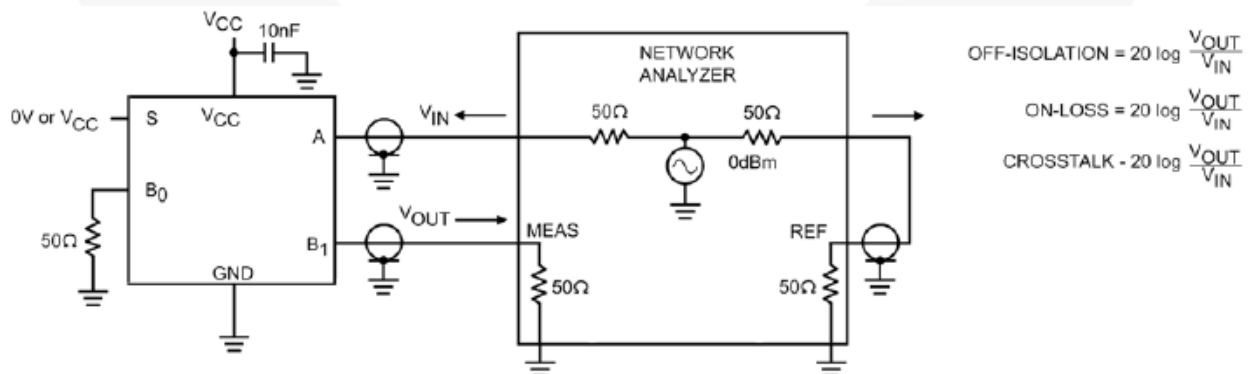


Figure 9. Off Isolation and Crosstalk

AC Loadings and Waveforms (Continued)

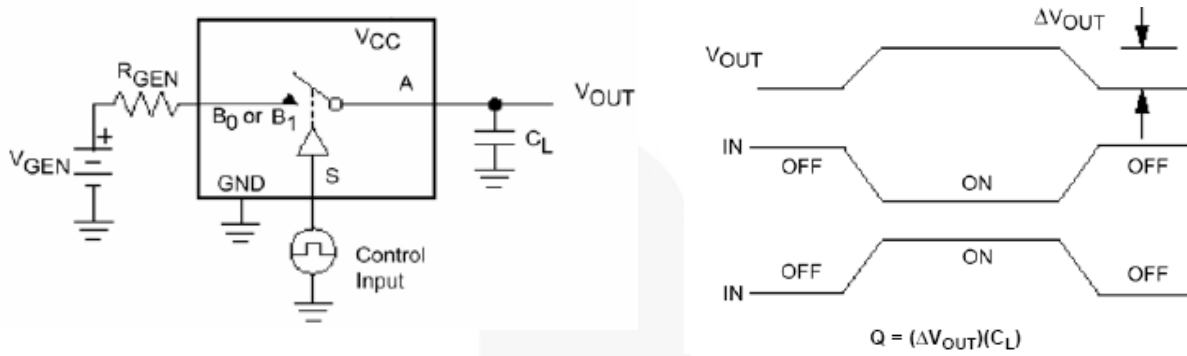


Figure 10. Charge Injection

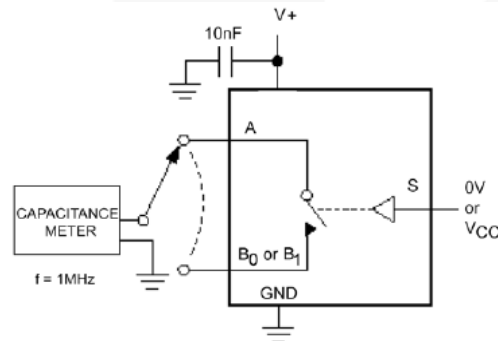


Figure 11. On / Off Capacitance Measurement Setup

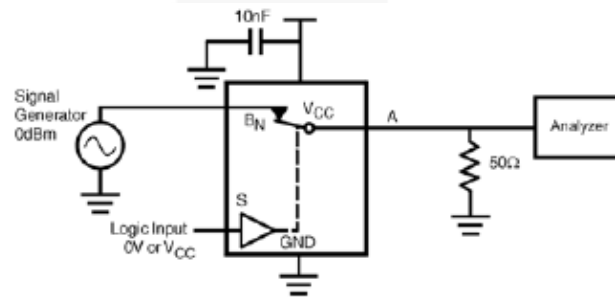


Figure 12. Bandwidth

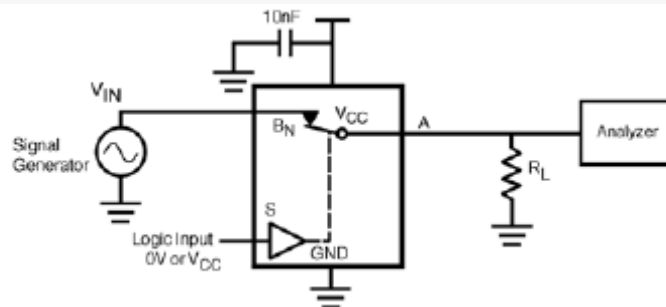
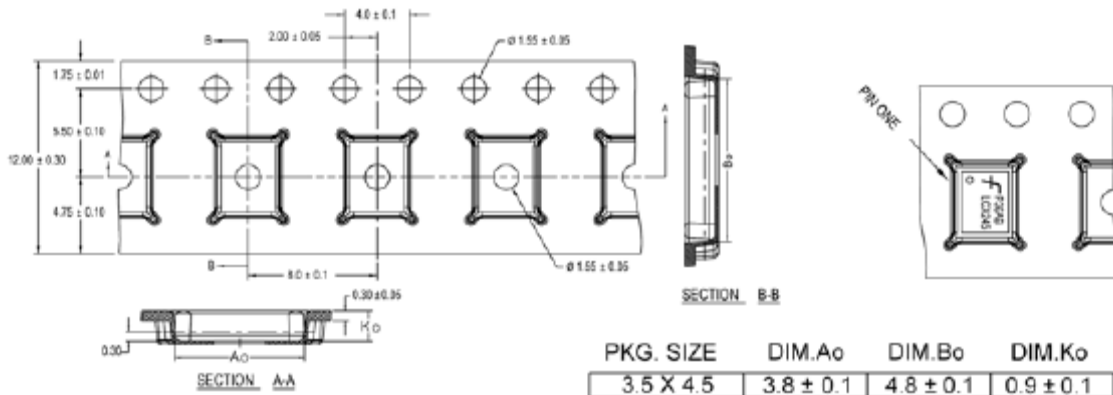


Figure 13. Harmonic Distortion

Tape and Reel Specifications

Tape Format for MLP

Package Designator	Tape Section	Number Cavities	Cavity Status	Cover Tape Status
MPX	Leader (Start End)	125 (typical)	Empty	Sealed
	Carrier	2500/3000	Filled	Sealed
	Trailer (Hub End)	75 (typical)	Empty	Sealed

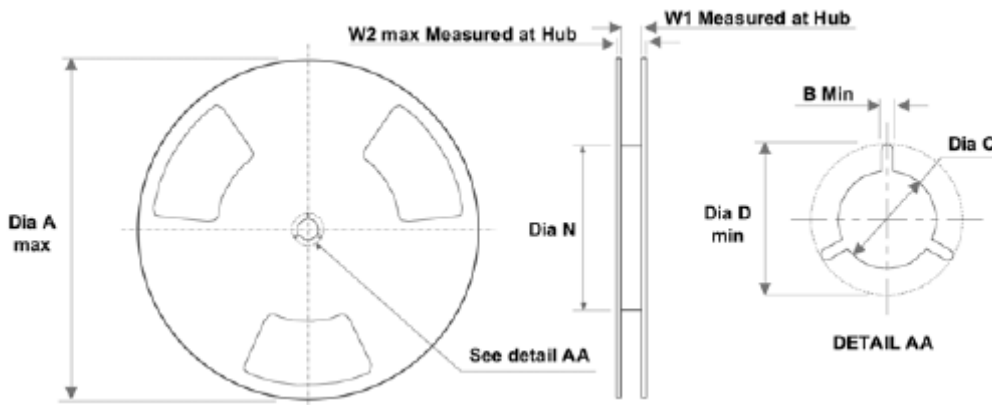


PKG. SIZE	DIM.A ₀	DIM.B ₀	DIM.K ₀
3.5 X 4.5	3.8 ± 0.1	4.8 ± 0.1	0.9 ± 0.1
3.0 X 3.0	3.3 ± 0.1	3.3 ± 0.1	0.9 ± 0.1
2.5 X 4.5	2.8 ± 0.1	4.8 ± 0.1	0.9 ± 0.1
2.5 X 3.5	2.8 ± 0.1	3.8 ± 0.1	0.9 ± 0.1
2.5 X 3.0	2.8 ± 0.1	3.3 ± 0.1	0.9 ± 0.1
2.5 X 2.5	2.8 ± 0.1	2.8 ± 0.1	0.9 ± 0.1

DIMENSIONS ARE IN MILLIMETERS

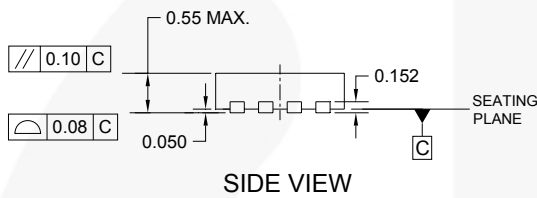
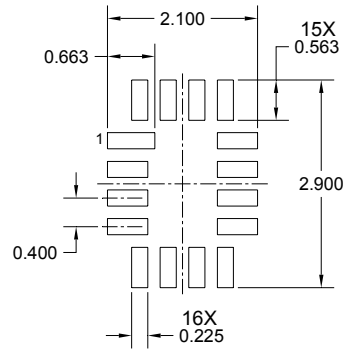
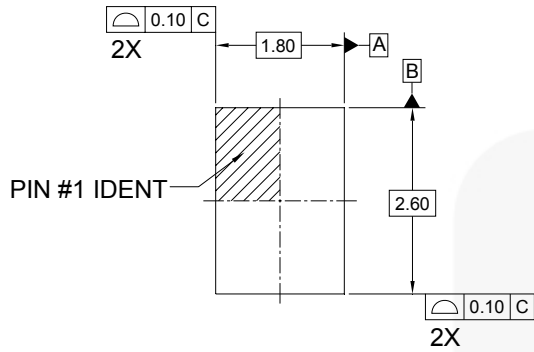
NOTES: unless otherwise specified

1. Cumulative pitch for feeding holes and cavities (chip pockets) not to exceed 0.008[0.20] over 10 pitch span.
2. Smallest allowable bending radius.
3. Thru hole inside cavity is centered within cavity.
4. Tolerance is ± 0.002 [0.05] for these dimensions on all 12mm tapes.
5. A₀ and B₀ measured on a plane 0.120[0.30] above the bottom of the pocket.
6. K₀ measured from a plane on the inside bottom of the pocket to the top surface of the carrier.
7. Pocket position relative to sprocket hole measured as true position of pocket. Not pocket hole.
8. Controlling dimension is millimeter. Dimension in inches rounded.

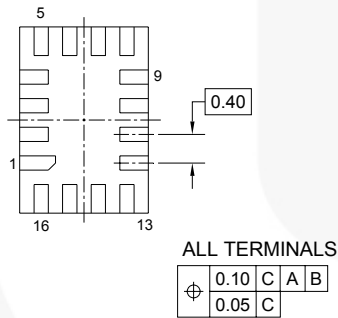
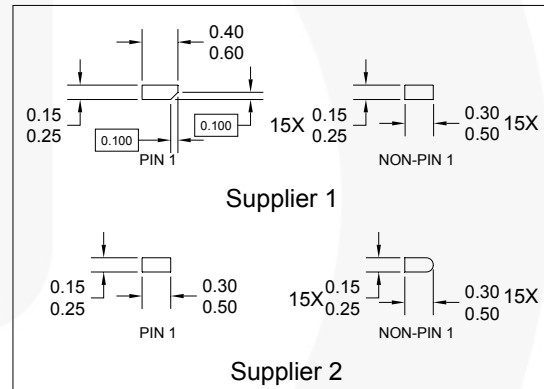


Tape Size	A	B	C	D	N	W1	W2
	13.000	0.059	0.512	0.795	7.008	0.488	0.724
(12mm)	(330.00)	(1.50)	(13.00)	(20.20)	(178.00)	(12.40)	(18.40)

Package Dimensions



TERMINAL SHAPE VARIANTS



NOTES:

- A. THIS PACKAGE IS NOT CURRENTLY REGISTERED WITH ANY STANDARDS COMMITTEE
- B. DIMENSIONS ARE IN MILLIMETERS.
- C. DIMENSIONS AND TOLERANCES PER ASME Y14.5M, 1994
- D. TERMINAL SHAPE MAY VARY ACCORDING TO PACKAGE SUPPLIER, SEE TERMINAL SHAPE VARIANTS
- E. LAND PATTERN IS A MINIMAL TOE DESIGN
- F. DRAWING FILE NAME : UMLP16AREV3

Figure 15. 16-Lead, Ultrathin Molded Leadless Package (UMLP)

Package drawings are provided as a service to customers considering Fairchild components. Drawings may change in any manner without notice. Please note the revision and/or date on the drawing and contact a Fairchild Semiconductor representative to verify or obtain the most recent revision. Package specifications do not expand the terms of Fairchild's worldwide terms and conditions, specifically the warranty therein, which covers Fairchild products.

Always visit Fairchild Semiconductor's online packaging area for the most recent package drawings:
<http://www.fairchildsemi.com/packaging/>



TRADEMARKS

The following includes registered and unregistered trademarks and service marks, owned by Fairchild Semiconductor and/or its global subsidiaries, and is not intended to be an exhaustive list of all such trademarks.

- | | | | |
|---|---|---|---|
| ACEx [®] | FPST [™] | PDP SPM [™] | The Power Franchise [®] |
| Build it Now [™] | F-PFS [™] | Power-SPM [™] |  |
| CorePLUS [™] | FRFET [®] | PowerTrench [®] | TinyBoost [™] |
| CorePOWER [™] | Global Power Resource SM | Programmable Active Droop [™] | TinyBuck [™] |
| CROSSVOLT [™] | Green FPST [™] | QFET [®] | TinyLogic [®] |
| CTL [™] | Green FPST [™] e-Series [™] | QST [™] | TINYOPTO [™] |
| Current Transfer Logic [™] | GTO [™] | Quiet Series [™] | TinyPower [™] |
| EcoSPARK [®] | IntelliMAX [™] | RapidConfigure [™] | TinyPWM [™] |
| EfficientMax [™] | ISOPLANAR [™] | Saving our world, 1mW at a time [™] | TinyWire [™] |
| EZSWITCH [™] * | MegaBuck [™] | SmartMax [™] | μSerDes [™] |
|  | MICROCOUPLER [™] | SMART START [™] |  |
|  | MicroFET [™] | SPM [®] | UHC [®] |
| Fairchild [®] | MicroPak [™] | STEALTH [™] | Ultra FRFET [™] |
| Fairchild Semiconductor [®] | MillerDrive [™] | SuperFET [™] | UniFET [™] |
| FACT Quiet Series [™] | MotionMax [™] | SuperSOT [™] -3 | VXC [™] |
| FACT [®] | Motion-SPM [™] | SuperSOT [™] -6 | VisualMax [™] |
| FAST [®] | OPTOLOGIC [®] | SuperSOT [™] -8 | |
| FastvCore [™] | OPTOPLANAR [®] | SupreMOS [™] | |
| FlashWriter [®] * | | SyncFET [™] | |
| | |  | |

* EZSWITCH[™] and FlashWriter[®] are trademarks of System General Corporation, used under license by Fairchild Semiconductor.

DISCLAIMER

FAIRCHILD SEMICONDUCTOR RESERVES THE RIGHT TO MAKE CHANGES WITHOUT FURTHER NOTICE TO ANY PRODUCTS HEREIN TO IMPROVE RELIABILITY, FUNCTION, OR DESIGN. FAIRCHILD DOES NOT ASSUME ANY LIABILITY ARISING OUT OF THE APPLICATION OR USE OF ANY PRODUCT OR CIRCUIT DESCRIBED HEREIN; NEITHER DOES IT CONVEY ANY LICENSE UNDER ITS PATENT RIGHTS, NOR THE RIGHTS OF OTHERS. THESE SPECIFICATIONS DO NOT EXPAND THE TERMS OF FAIRCHILD'S WORLDWIDE TERMS AND CONDITIONS, SPECIFICALLY THE WARRANTY THEREIN, WHICH COVERS THESE PRODUCTS.

LIFE SUPPORT POLICY

FAIRCHILD'S PRODUCTS ARE NOT AUTHORIZED FOR USE AS CRITICAL COMPONENTS IN LIFE SUPPORT DEVICES OR SYSTEMS WITHOUT THE EXPRESS WRITTEN APPROVAL OF FAIRCHILD SEMICONDUCTOR CORPORATION.

As used herein:

1. Life support devices or systems are devices or systems which, (a) are intended for surgical implant into the body or (b) support or sustain life, and (c) whose failure to perform when properly used in accordance with instructions for use provided in the labeling, can be reasonably expected to result in a significant injury of the user.
2. A critical component in any component of a life support, device, or system whose failure to perform can be reasonably expected to cause the failure of the life support device or system, or to affect its safety or effectiveness.

PRODUCT STATUS DEFINITIONS

Definition of Terms

Datasheet Identification	Product Status	Definition
Advance Information	Formative / In Design	This datasheet contains the design specifications for product development. Specifications may change in any manner without notice.
Preliminary	First Production	This datasheet contains preliminary data; supplementary data will be published at a later date. Fairchild Semiconductor reserves the right to make changes at any time without notice to improve design.
No Identification Needed	Full Production	This datasheet contains final specifications. Fairchild Semiconductor reserves the right to make changes at any time without notice to improve the design.
Obsolete	Not In Production	This datasheet contains specifications on a product that is discontinued by Fairchild Semiconductor. The datasheet is for reference information only.

Rev. 134