

## RB715F SCHOTTKY BARRIER DIODE

### FEATURES:

Power dissipation

$$P_D: 200 \text{ mW (} T_{amb}=25^\circ\text{C)}$$

Collector current

$$I_F: 30 \text{ mA}$$

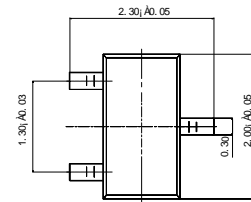
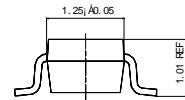
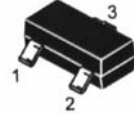
Collector-base voltage

$$V_R: 40 \text{ V}$$

Operating and storage junction temperature range

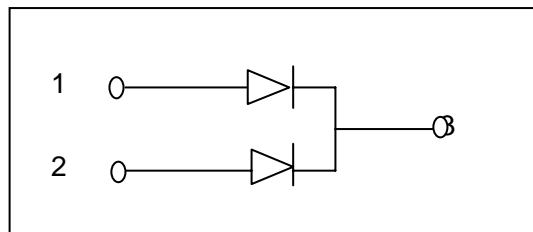
$$T_J, T_{stg}: -55^\circ\text{C to } +150^\circ\text{C}$$

### SOT-323



Unit: mm

### CIRCUIT:



### MARKING: 3D

### ELECTRICAL CHARACTERISTICS ( $T_{amb}=25^\circ\text{C}$ unless otherwise specified)

Parameter	Symbol	Test conditions	MIN	MAX	UNIT
Reverse breakdown voltage	$V_{(BR)}$	$I_R=100\mu\text{A}$	40		V
Reverse voltage leakage current	$I_R$	$V_R=10\text{V}$		1	$\mu\text{A}$
Forward voltage	$V_F$	$I_F=1\text{mA}$		0.37	V
Diode capacitance	$C_D$	$V_R=1\text{V}, f=1\text{MHz}$		5	pF