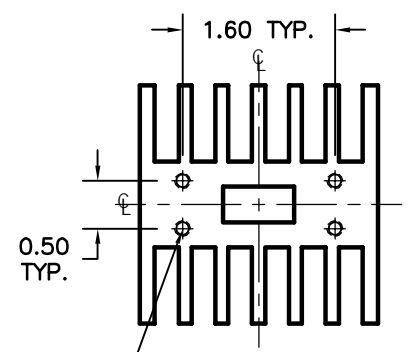
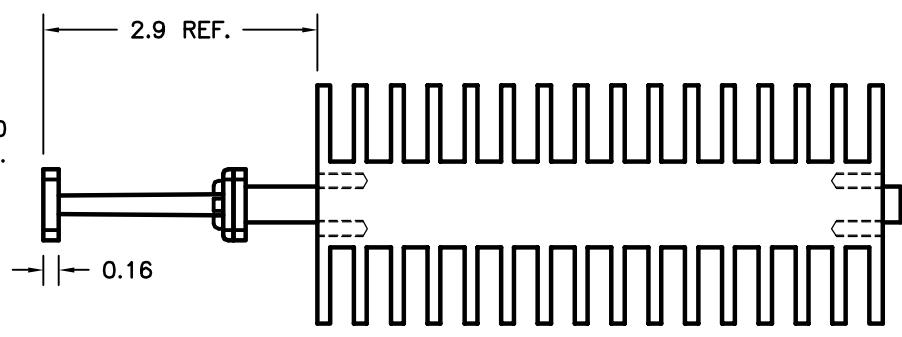


#8-32 X 0.50  
DP. TAPPED  
HOLE (4) PLC.

WR28 FLANGE PER  
ORDER, UG-COVER STD.



#8-32 X 0.50  
DP. TAPPED  
HOLE (4) PLC.

**MODEL SPECIFICATIONS**

MODEL CODE: 22/28-780-X\*  
 WG SIZE: WR22 INPUT  
 FLANGES: PER ORDER, SEE TABLE A  
 FREQ. RANGE: 33.0-50.0 GHz  
 VSWR: 1.15 MAX.  
 AVG. POWER: 500 WATTS

|  |            |
|--|------------|
| *TABLE A<br>ATM STANDARD<br>FLANGE TYPES |            |
| 6  | = UG-COVER |
| 7  | = UG-CHOKE |
| 8  | = SPECIAL  |

|   |                |           |          |   |                  |                 |               |              |            |
|---|----------------|-----------|----------|---|------------------|-----------------|---------------|--------------|------------|
| MATERIAL  | 6061/T-6 ALUM. | TREATMENT | -        | DRAWN   | RL               | DATE            | 12/22/05      |              |            |
| FINISH  | HI-TEMP BLACK  | MOD NO.   | 28-780-X | CHECKED   |                  | DATE            |               |              |            |
| <b>OUTLINE,<br/>WR22 500 WATT TERMINATION</b>   |                |           |          | APPROVED  |                  | DATE            |               |              |            |
|   |                |           |          | CAGE CODE: OR8N4  | DO NOT SCALE DWG |                 |               |              |            |
| ADVANCED TECHNICAL MATERIALS, INC.<br>49 RIDER AVE., PATCHOGUE N.Y. 11772<br>TEL: (631) 289-0386 FAX: (631) 289-0358<br>http://www.atmmicrowave.com             |                |           |          | UNLESS OTHERWISE NOTED DIMENSIONS ARE IN INCHES TOLERANCES ARE: |                  | FRACTIONS ±1/64 | DECIMALS ±.01 | ANGLES ±1/2° | SHEET. 1/1 |
| <p>PROPRIETARY NOTICE:<br/>THE INFORMATION IN THIS DRAWING IS PROPRIETARY AND SHALL NOT BE USED OR DISCLOSED WITHOUT THE PRIOR WRITTEN CONSENT OF ATM, INC.</p> |                |           |          | SCALE 1 : 2   |                  | DWG. NO. 6551W  |               | REV. -       |            |
|   |                |           |          |   |                  |                 |               |              |            |