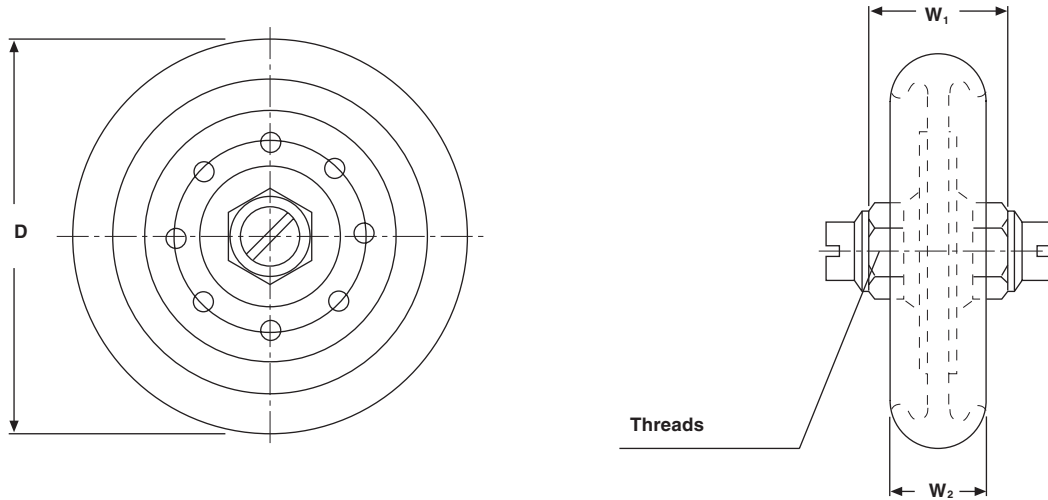


Plate Capacitors with Contoured Rim - Class 2 Ceramic

- PS 20 3.5 KV_P**
- PS 30 3.5 KV_P**
- PS 30 3.5 KV_P**
- PS 55 2 KV_P to 4 KV_P**



• Dimensions in millimeters (inches)

MODEL	PS 20	PS 30	PS 40	PS 55
D	25 max. (0.984 max.)	35 max. (1.378 max.)	45 max. (1.772 max.)	57 max. (2.244 max.)
W ₁	26 max. (1.024 max.)	25 max. (0.984 max.)	23 max. (0.906 max.)	22 max. (0.866 max.)
W ₂	17 max. (0.669 max.)	17 max. (0.669 max.)	15.5 max. (0.610 max.)	14.5 max. (0.571 max.)
Threads	M 5		M 6	

MATERIAL:

Capacitor elements made from Class 2 ceramic dielectric with noble metal electrodes.
 Connection Terminals: Copper/brass, silver plated.

FINISH:

Noble metal electrodes and contoured rim completely lacquered.

MARKING:

Type designator, Capacitance value and tolerance, Rated voltage (peak value), Production date code, Ceramic material code, DRALORIC Logo.

ACCESSORIES ADDED:

Screws and washers

ORDERING INFORMATION				
PS 30	3.5 KV _P	3300 pF	- 20 + 40 %	R 3500
MODEL	RATED VOLTAGE	CAPACITANCE VALUE	TOLERANCE	CERAMIC



PS 20, 30, 40, 55 - Class 2

Plate Capacitors with Contoured Rim - Class 2 Ceramic Vishay Draloric

PS 20				
CERAMIC	CAPACITANCE VALUE [pF]	RATED VOLTAGE [KV _P]	RATED POWER* [KVA _r]	RATED CURRENT [A _{RMS}]
R 3500	1000	3.5	0.25	max. 5
	1500			

PS 30				
CERAMIC	CAPACITANCE VALUE [pF]	RATED VOLTAGE [KV _P]	RATED POWER* [KVA _r]	RATED CURRENT [A _{RMS}]
R 3500	2200	3.5	0.5	max. 10
	3300			

PS 40				
CERAMIC	CAPACITANCE VALUE [pF]	RATED VOLTAGE [KV _P]	RATED POWER* [KVA _r]	RATED CURRENT [A _{RMS}]
R 3500	4700	3.5	1.0	max. 15
	5600			
	6800			

PS 55				
CERAMIC	CAPACITANCE VALUE [pF]	RATED VOLTAGE [KV _P]	RATED POWER* [KVA _r]	RATED CURRENT [A _{RMS}]
R 3500	10 000	4.0	1.0	max. 18
	15 000	3.5		
	22 000			
	27 000	2.0		

* The surface temperature of 100 °C must not be exceeded

CAPACITANCE TOLERANCES: - 20 + 40 %

APPLICATION:

PS 20 to PS 55 plate capacitors made from Class 2 ceramic dielectric can be used as coupling and bypass capacitors where low power ratings are required and larger capacitance changes with temperature can be tolerated.



Disclaimer

All product specifications and data are subject to change without notice.

Vishay Intertechnology, Inc., its affiliates, agents, and employees, and all persons acting on its or their behalf (collectively, "Vishay"), disclaim any and all liability for any errors, inaccuracies or incompleteness contained herein or in any other disclosure relating to any product.

Vishay disclaims any and all liability arising out of the use or application of any product described herein or of any information provided herein to the maximum extent permitted by law. The product specifications do not expand or otherwise modify Vishay's terms and conditions of purchase, including but not limited to the warranty expressed therein, which apply to these products.

No license, express or implied, by estoppel or otherwise, to any intellectual property rights is granted by this document or by any conduct of Vishay.

The products shown herein are not designed for use in medical, life-saving, or life-sustaining applications unless otherwise expressly indicated. Customers using or selling Vishay products not expressly indicated for use in such applications do so entirely at their own risk and agree to fully indemnify Vishay for any damages arising or resulting from such use or sale. Please contact authorized Vishay personnel to obtain written terms and conditions regarding products designed for such applications.

Product names and markings noted herein may be trademarks of their respective owners.