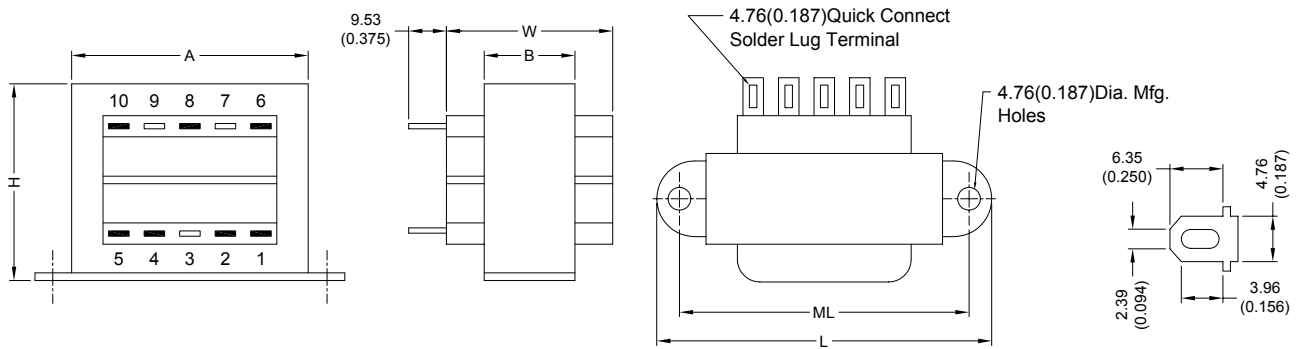


# POWER TRANSFORMER

## DCS6-24 (F) SERIES

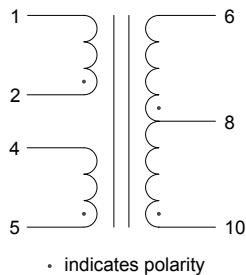
### 1. CONFIGURATION & DIMENSIONS :



UNIT : mm (inch)

SIZE	VA	L	W	H	A	B	ML	gram
6	30	82.55 (3.250)	42.88 (1.688)	49.23 (1.938)	74.63 (2.938)	27.00 (1.063)	71.45 (2.813)	498.95

### 2. SCHEMATIC :



### 3. ELECTRICAL CHARACTERISTICS ( @ 25°C ) :

- |                                      |                              |
|--------------------------------------|------------------------------|
| a. Primary Voltage                   | AC 115/230 V 50/60 Hz .      |
| b. No Load Primary Current           | Less Than 35mA / 55mA .      |
| c. Secondary Voltage (±5%)           |                              |
| Pin 6-10 C.T. Pin 8                  | AC 28.50 V / 28.50 V .       |
| d. Secondary Load Current            | 1.25A .                      |
| e. Full Load Primary Current         | Less Than 340mA / 200mA .    |
| f. Full Load Secondary Voltage (±5%) | 24.00V / 24.00V .            |
| Pin 6-10 C.T. Pin 8                  |                              |
| g. DC Resistance                     |                              |
| Pin 1-2                              | Primary-1 = 41.20 Ohm .      |
| Pin 4-5                              | Primary-2 = 47.90 Ohm .      |
| Pin 6-8                              | Secondary-1 = 0.58 Ohm .     |
| Pin 8-10                             | Secondary-2 = 0.65 Ohm .     |
| h. Insulation Resistance             | DC 500V 100Meg Ohm Of More . |
| i. Withstand Voltage (Hi-Pot)        | AC 2500V 60Hz 1 Minutes .    |
| j. Temperature Rise                  | Less Than 60 Deg C .         |
| k. Core Size                         | EI-57 x 26.00 m/m .          |

#### l. Turns & Wire Gauge

Primary-1	Pin 1-2	694	Turns Diameter	0.20 mm
Primary-2	Pin 4-5	694	Turns Diameter	0.20 mm
Secondary	Pin 6-8-10	0-85-170	Turns Diameter	0.60 mm



**RoHS Compliant**

NOTE : Specifications subject to change without notice. Please check our website for latest information.

25.02.2008



**SUPERWORLD ELECTRONICS (S) PTE LTD**

PG. 1