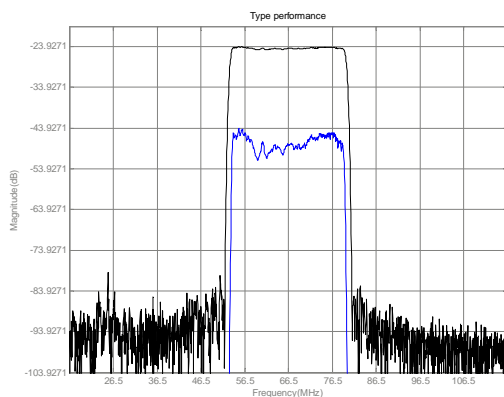




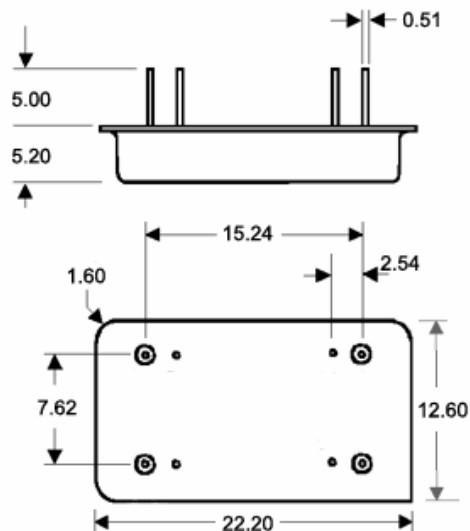
## LBN06602 SAW Filter Electrical Characteristic

<i>Specifications</i>				
Parameter	Unit	Minimum	Typical	Maximum
<b>Center Frequency</b>	MHz	66.65	66.5	66.35
<b>Insertion Loss</b>	dB	-	24	25
<b>1 dB Bandwidth</b>	MHz	-	25.73	-
<b>3 dB Bandwidth</b>	MHz	26.1	26.3	-
<b>40 dB Bandwidth</b>	MHz	-	28.5	28.9
<b>50 dB Bandwidth</b>	MHz	-	28.74	-
<b>Passband Variation</b>	dB	-	0.7	1.0
<b>Absolute Delay</b>	usec	-	1.95	-
<b>Ultimate Rejection</b>	dB	50	55	-
<b>Substrate Material</b>		128 LiNbO3		
<b>Ambient Temperature</b>	°C	25		
<b>Package Size</b>		DIP2212 (22.7x12.7x5.2mm <sup>3</sup> )		

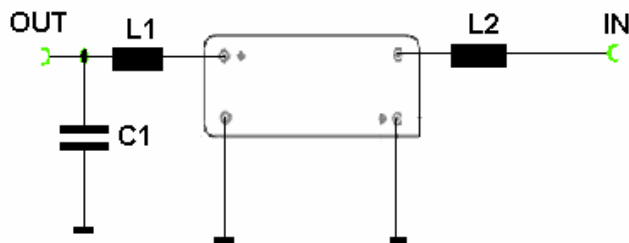
### *Typical Performance*



### *Package Outline*



### *Matching Configuration*



L1=330nH C1=47pF L2=180nH  
 Source/Load Impedance=50 ohm

Notes - Component values may change depending  
 on board layout.