



HIGH EFFICIENCY RECTIFIER

HER151 THRU HER158

VOLTAGE RANGE
CURRENT

50 to 1000 Volts
1.5Ampere

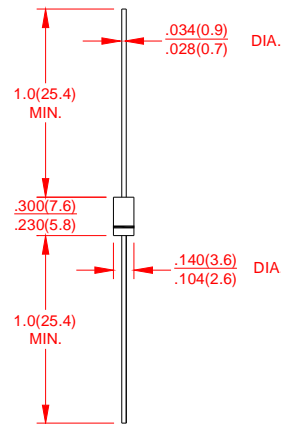
DO-15

FEATURES

- Low coat construction
- Fast switching for high efficiency.
- Low reverse leakage
- High forward surge current capability
- High temperature soldering guaranteed:
260°C/10 secods/.375"(9.5mm)lead length at 5 lbs(2.3kg) tension

MECHANICAL DATA

- Case: Transfer molded plastic
- Epoxy: UL94V-O rate flame retardant
- Polarity: Color band denotes cathode end
- Lead: Plated axial lead, solderable per MIL-STD-202E method 208C
- Mounting position: Any
- Weight: 0.014ounce, 0.39 grams



Dimensions in inches and (millimeters)

MAXIMUM RATINGS AND ELECTRICAL CHARACTERISTICS

- Ratings at 25°C ambient temperature unless otherwise specified
- Single Phase, half wave, 60Hz, resistive or inductive load
- For capacitive load derate current by 20%

	SYMBOLS	HER 151	HER 152	HER 153	HER 154	HER 155	HER 156	HER 157	HER 158	UNITS	
Maximum Repetitive Peak Reverse Voltage	V_{RRM}	50	100	200	300	400	600	800	1000	Volts	
Maximum RMS Voltage	V_{RMS}	35	70	140	210	280	420	560	800	Volts	
Maximum DC Blocking Voltage	V_{DC}	50	100	200	300	400	600	800	1000	Volts	
Maximum Average Forward Rectified Current 0.375"(9.5mm) lead length at $T_A=50^\circ\text{C}$	$I_{(AV)}$	1.0								Amp	
Peak Forward Surge Current 8.3mS single half sine wave superimposed on rated load (JEDEC method)	I_{FSM}	50								Amps	
Maximum Instantaneous Forward Voltage @ 1.5A	V_F	1.0		1.3		1.5	1.7			Volts	
Maximum DC Reverse Current at Rated DC Blocking Voltage	I_R	$T_A = 25^\circ\text{C}$								5.0	μA
		$T_A = 125^\circ\text{C}$								250	
Maximum Full Load Recovery Current,full cycle average 0.375"(9.5mm)lead length at $T_L=55^\circ\text{C}$	$I_{R(AV)}$	100								μA	
Maximum Reverse Recovery Time Test conditions $I_F=0.5\text{A}, I_R=0.1\text{A}, I_{RR}=0.25\text{A}$	t_{rr}	50					75				ns
Typical Thermal Resistance (NOTE 2)	C_J	30					20				PF
Typical Thermal Resistance(NOTE 1)	$R_{\theta JA}$	40								$^\circ\text{C}/\text{W}$	
Operating Junction Temperature Range	T_J	(-55 to +150)								$^\circ\text{C}$	
Storage Temperature Rrange	T_{STG}	(-55 to +150)								$^\circ\text{C}$	

Notes:

1. Thermal resistance from junction to ambient with .375"(9.5mm)lead length, PCB. mounted.
2. Measured at 1 MHz and applied reverse of 4.0 volts.



HIGH EFFICIENCY RECTIFIER

HER151 THRU HER158

VOLTAGE RANGE
CURRENT

50 to 1000 Volts
1.5Ampere

RATING AND CHARACTERISTIC CURVES HER151 THRU HER158

FIG.1-TYPICAL FORWARD CURRENT DERATING CURVE

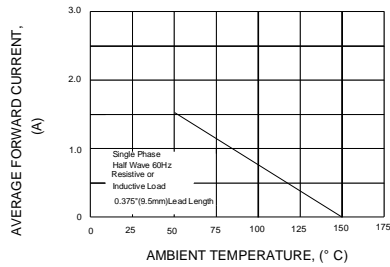


FIG.2-MAXIMUM NON-REPETITIVE PEAK FORWARD SURGE CURRENT

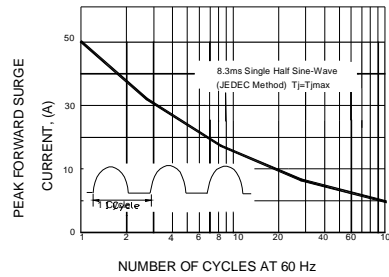


FIG.3-TYPICAL INSTANTANEOUS FORWARD CHARACTERISTICS

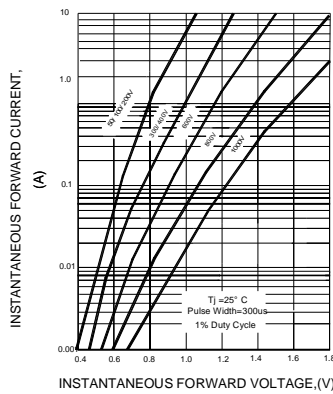


FIG.4-TYPICAL REVERSE CHARACTERISTICS

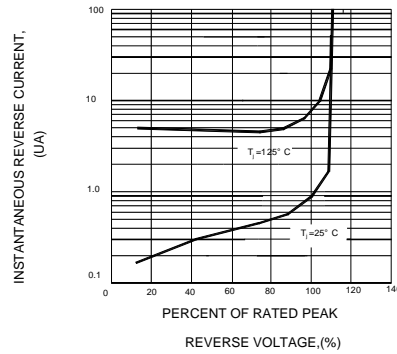


FIG.5-TYPICAL JUNCTION CAPACITANCE

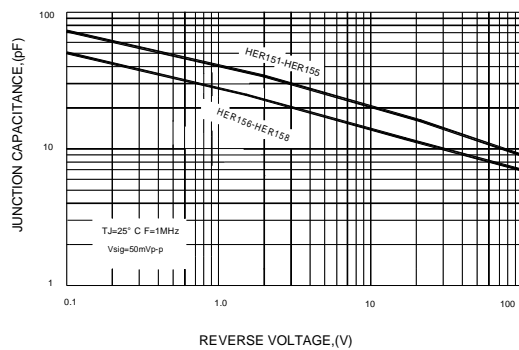
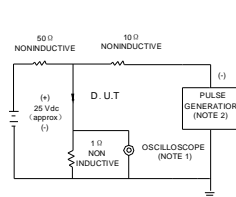


FIG.6-TEST CIRCUIT DIAGRAM AND REVERSE RECOVERY TIME CHARACTERISTIC



NOTE: 1. Rise Time = 7ns max. Input Impedance=1megohm. 22pF
2. Rise time=10ns max. Source Impedance=50 ohms

