

Air Dielectric Directional Coupler (25dB, 30dB)

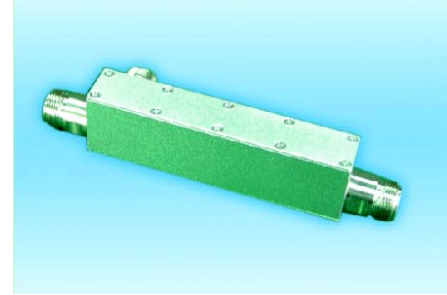
► Applications

- GSM, CDMA, PCS, DCS, PHS, AMPS, SMR, WCDMA Communication systems

► Features

- High Power Handling, Low Insertion Loss

► Technical Specifications



P/N	JXMBOH-T-800-2500-25	JXMBOH-T-800-2500-30
Frequency Range	800-2500MHz	800-2500MHz
Insertion Loss	≤0.2dB	≤0.2dB
Coupling	≤25±1.0dB	≤30±1.0dB
Directivity	≥20dB	≥20dB
VSWR	≤1.3:1	≤1.3:1
Power Handling	100W	100W
Impedance	50Ω	50Ω
Port Connector	N-Female	N-Female
Operating Temperature	-30°C ~ +70°C	-30°C ~ +70°C

