

2.0 WATT DC-DC CONVERTER

Unregulated, 16 Pins SMD

FEATURES

- ① Up to 1.8 Watts Output Power
- ② 16Pins SMD Package
- ③ 2000 Vdc
- ④ Unregulated Output Types

GENERAL SPECIFICATIONS

- Output Ripple & Noise..... 100mVp-p(20MHz B.W.)
- Isolation Resistance 100MΩ Min @500VDC
- Switching Frequency..... 100KHz TYP
- Operating Temperature..... 0 °C To +70 °C
- Efficiency (Unregulated)..... 70% TYP
- Short Circuit Protection..... Short Term

ELECTRICAL SPECIFICATIONS

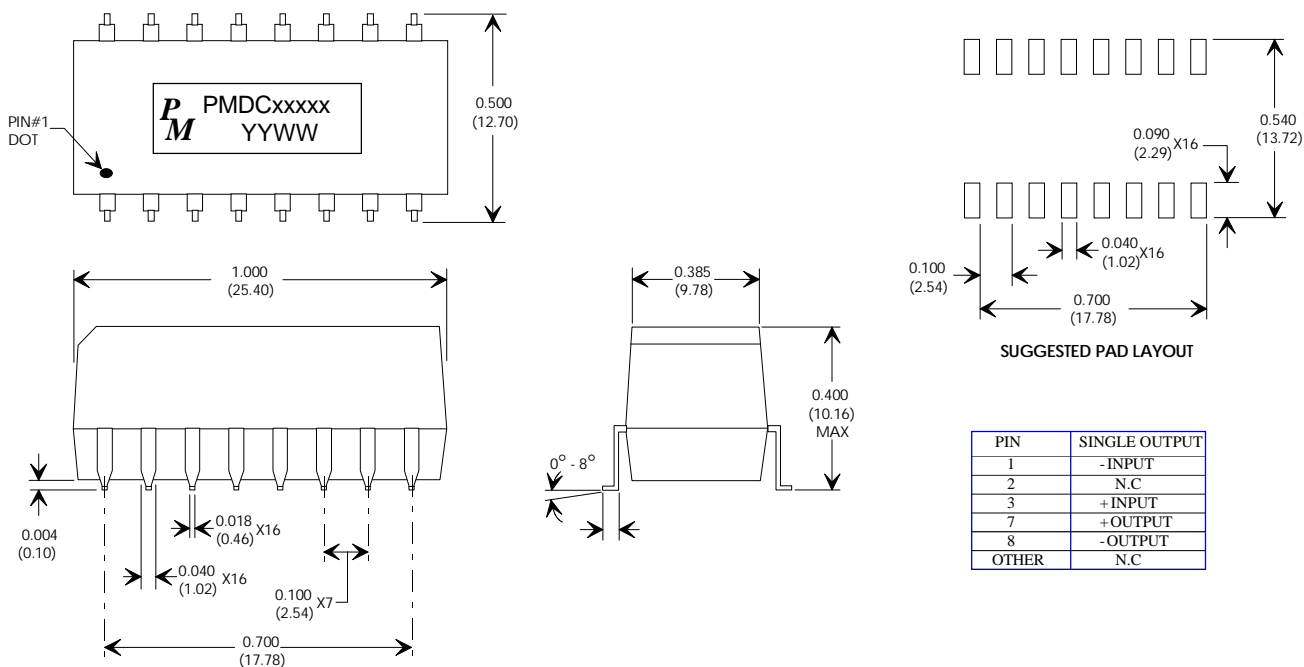
- Input Voltage Range..... ± 5%
- Output Voltage Tolerance..... ± 5%
- Line Regulation (10% To 100% F.L)..... ±1.2%
- Load Regulation (10% To 100% F.L).... ±10%

ELECTRICAL SPECIFICATIONS AT 25°C - OPERATING TEMPERATURE RANGE 0°C TO +70°C

PART NUMBER	INPUT VOLTAGE (Vdc)	OUTPUT VOLTAGE (Vdc)	OUTPUT CURRENT (mA max.)	EFFICIENCY (%)
PM-DC05105	5.0	5.0	360	70
PM-DC05109	5.0	9.0	200	75
PM-DC05112	5.0	12.0	150	75
PM-DC05115	5.0	15.0	120	75
PM-DC12105	12.0	5.0	360	70
PM-DC12109	12.0	9.0	200	75
PM-DC12112	12.0	12.0	150	75
PM-DC12115	12.0	15.0	120	75

PACKAGE

PHYSICAL DIMENSIONS DIMENSIONS IN INCH (mm)



Specifications subject to change without notice.

PM-DCXXXX 9/2000

2.0 WATT DC-DC CONVERTER

Unregulated, 16 Pins SMD

FEATURES

- ① Up to 1.8 Watts Output Power
- ② 16Pins SMD Package
- ③ 2000 Vdc

ELECTRICAL SPECIFICATIONS

- Input Voltage Range..... ± 5%
- Output Voltage Tolerance..... ± 5%
- Line Regulation 8%
- Load Regulation 12%

GENERAL SPECIFICATIONS

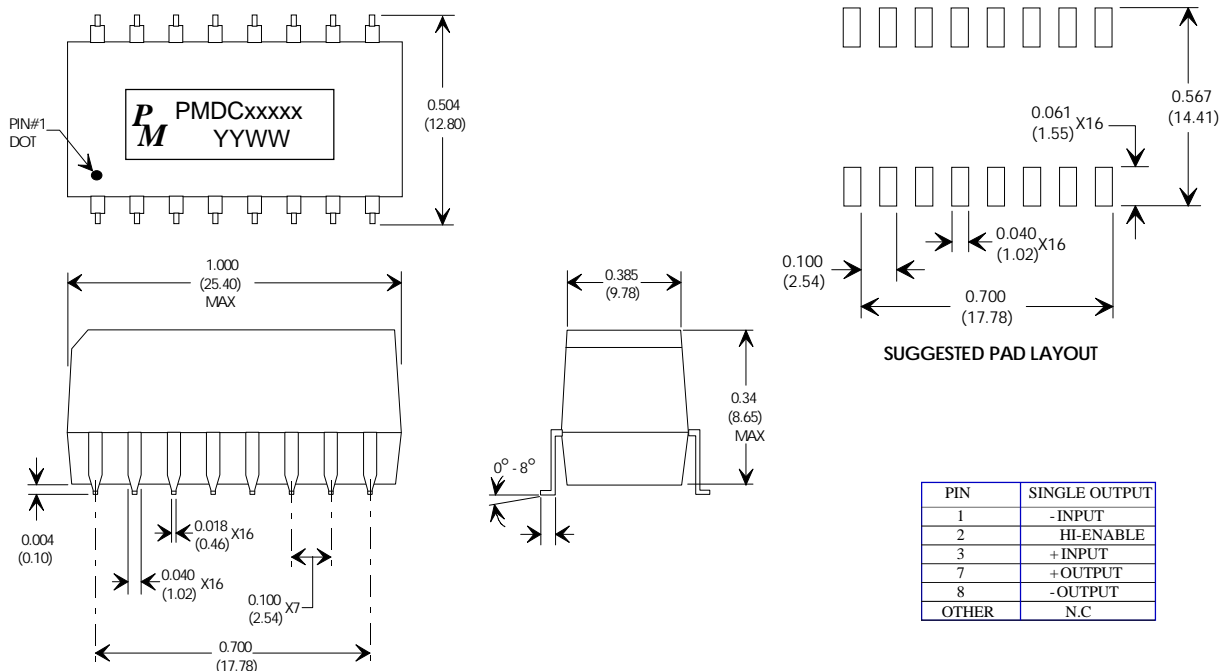
- Input Filter..... Capacitor Type
- Output Ripple & Noise..... 100mVp-p(20MHz B.W.)
- Isolation Resistance 100MΩ Min @500VDC
- Switching Frequency..... 25KHz TYP
- Operating Temperature..... 0 °C To +70 °C
- Efficiency (Unregulated)..... 70% TYP
- Short Circuit Protection..... Current Limit (80-450mA)
- Short Circuit RESTART..... Automatic
- Remote On/Off..... Active Hi Enable, Pin 2

ELECTRICAL SPECIFICATIONS AT 25°C - OPERATING TEMPERATURE RANGE 0°C TO +70°C

PART NUMBER	INPUT VOLTAGE (Vdc)	OUTPUT VOLTAGE (Vdc)	OUTPUT CURRENT (mA max.)	EFFICIENCY (%)
PM-DC05209	5.0	9.0	200	75

PACKAGE

PHYSICAL DIMENSIONS DIMENSIONS IN INCH (mm)



Specifications subject to change without notice.

PM-DCXXXXX 9/2000