

PHA2729-240M



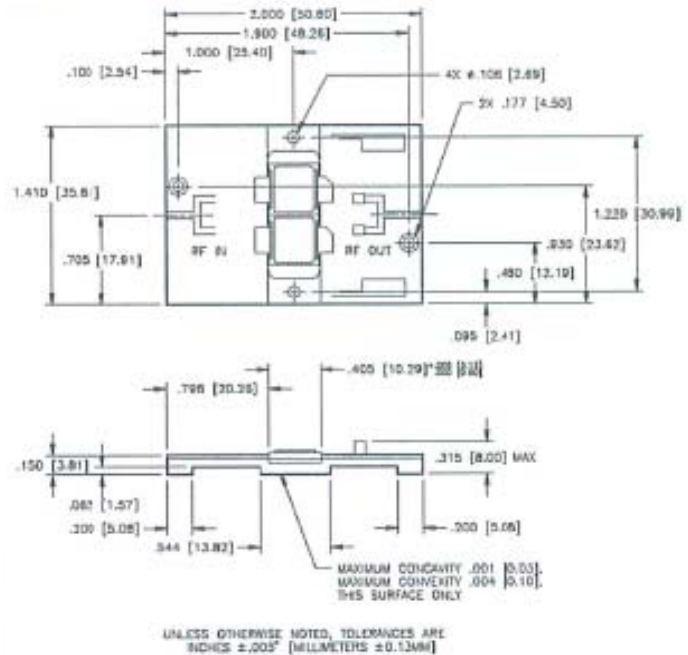
Radar Pulsed Power Module, 240W
2700MHz to 2900MHz, 100µS Pulse, 10% Duty

Released—11-04-2002

Features

- In-phase combined pulsed power transistors
- Input and output matched to 50 Ohms
- Soft substrate circuit board
- Nickel plated copper flange
- Easily combined for high power transmitters
- MTTF > 1x10⁶ hrs at T_{flange} = 45°C

Product Image



ABSOLUTE MAXIMUM RATINGS AT 25°C

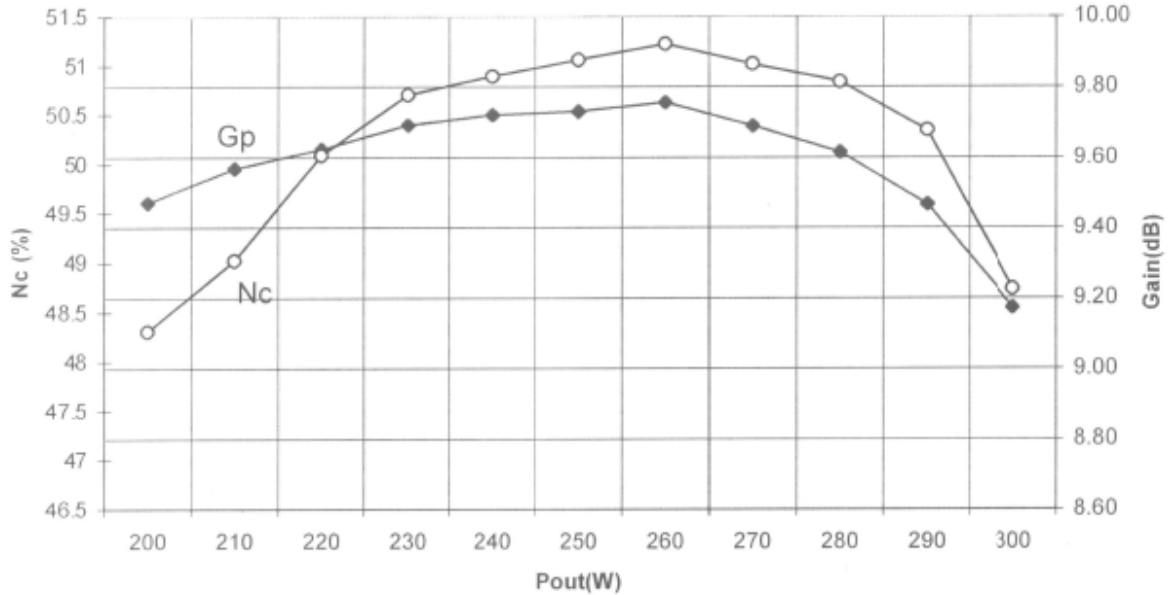
Parameter	Symbol	Rating	Units
Supply Voltage	V _{CC}	40	V
Input Power	P _{in}	55	Wpk
Output Power	P _{out}	325	Wpk
Thermal Resistance	θ _{JC}	0.35	°C/W
Total Power Dissipation	P _D	500	W
Operating Case Temp.	T _C	-30 to +100	°C
Storage Temp.	T _{STG}	-40 to +125	°C

ELECTRICAL CHARACTERISTICS AT 25°C

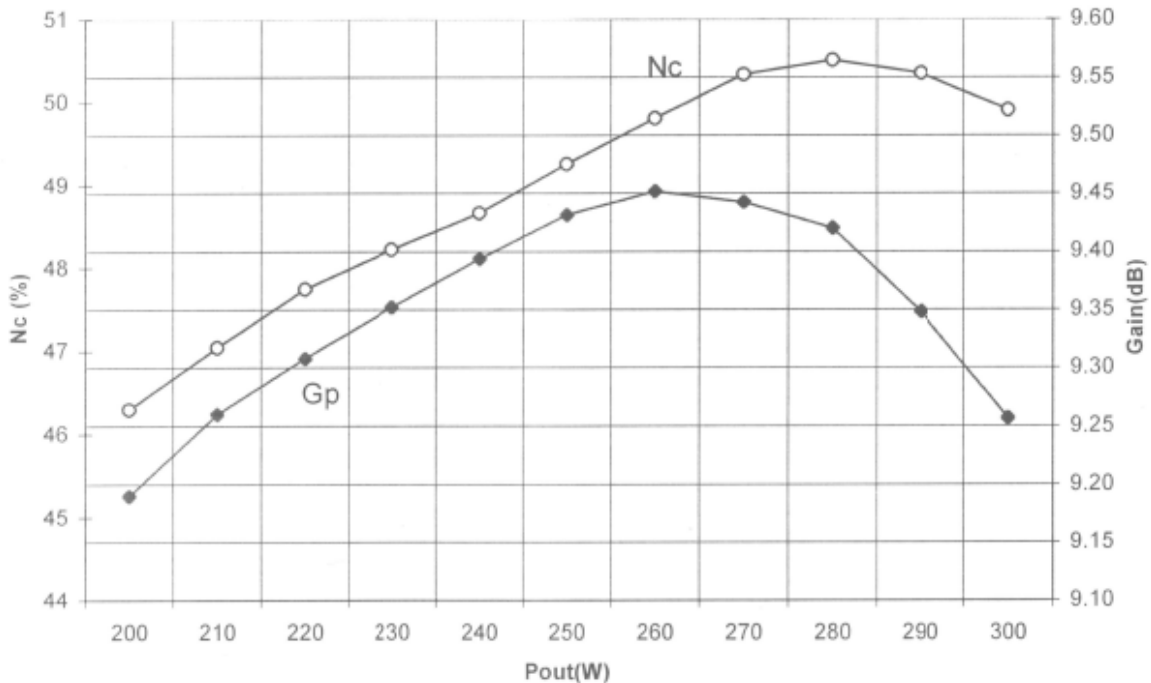
Parameter	Symbol	Min	Max	Units	Test Conditions
Input Power	P _{IN}	-	44	Wpk	V _{CC} = 36V, P _{out} = 240Wpk, F = 2.7, 2.8, 2.9GHz
Collector Current	I _c	-	16.97	A	V _{CC} = 36V, P _{out} = 240Wpk, F = 2.7, 2.8, 2.9GHz
Input Return Loss	RL	10	-	dB	V _{CC} = 36V, P _{out} = 240Wpk, F = 2.7, 2.8, 2.9GHz
Pulse Amplitude Droop	Droop	-	0.7	dB	V _{CC} = 36V, P _{out} = 240Wpk, F = 2.7, 2.8, 2.9GHz
2nd Harmonic	2fc	-	-20	dB	V _{CC} = 36V, P _{out} = 240Wpk, F = 2.7, 2.8, 2.9GHz
Insertion Phase Deviation	Δφ	-20	+20	Degrees	V _{CC} = 36V, P _{out} = 240Wpk, F = 2.7, 2.8, 2.9GHz
Load Mismatch Stability	VSWR-S	-	1.5:1	-	V _{CC} = 36V, P _{out} = 240Wpk, F = 2.7, 2.8, 2.9GHz
Overdrive/Load Mismatch Tolerance	OD/ VSWR-T	-	2:1	-	V _{CC} = 36V, P _{in} = (P _{in} @P _{out} = 240Wpk) + 0.6dB, F = 2.7, 2.8, 2.9GHz

Typical Performance Curves

Collector Efficiency and Power Gain vs. Power Output
Vcc=36VDC, Pulse Width=100µS, Duty=10%, 2.7GHz



Collector Efficiency and Power Gain vs. Power Output
Vcc=36VDC, Pulse Width=100µS, Duty=10%, 2.8GHz



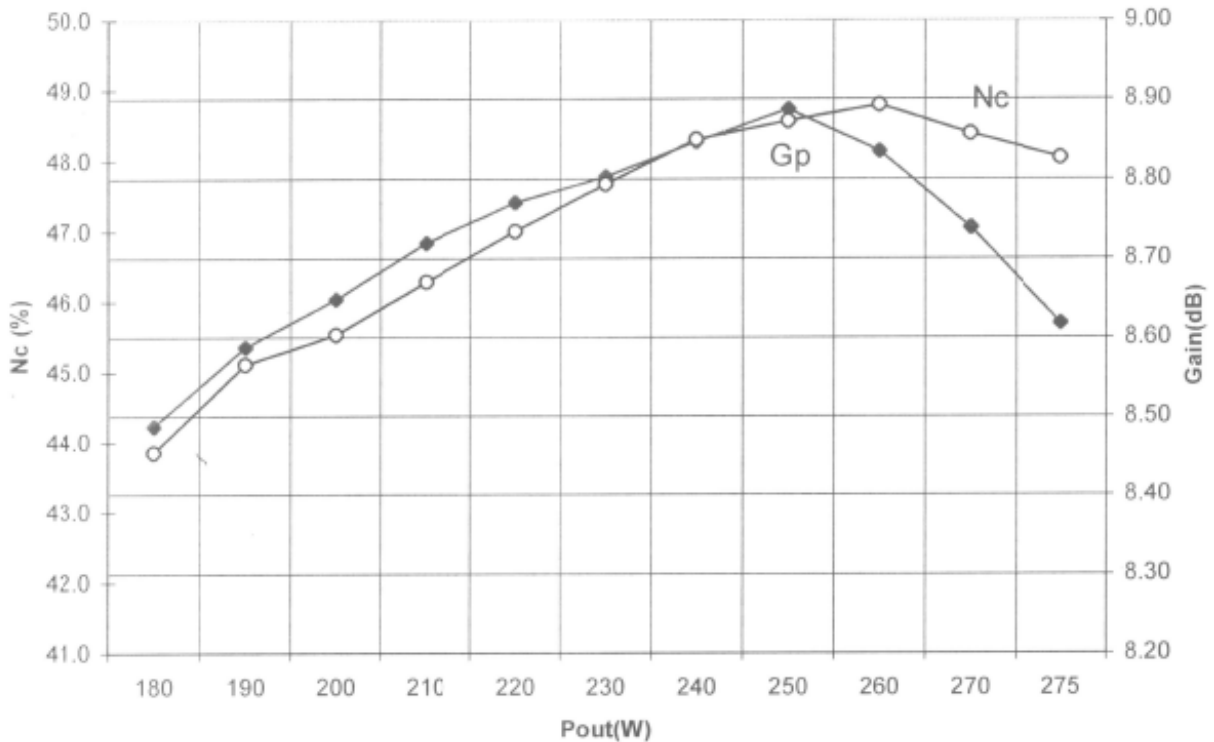
PHA2729-240M



Radar Pulsed Power Module, 240W
2700MHz to 2900MHz, 100µS Pulse, 10% Duty

Released—11-04-2002

Collector Efficiency and Power Gain vs. Power Output
Vcc=36VDC, Pulse Width=100µS, Duty=10%, 2.9GHz



ADVANCED: Data Sheets contain information regarding a product M/A-COM Technology Solutions is considering for development. Performance is based on target specifications, simulated results, and/or prototype measurements. Commitment to develop is not guaranteed.
PRELIMINARY: Data Sheets contain information regarding a product M/A-COM Technology Solutions has under development. Performance is based on engineering tests. Specifications are typical. Mechanical outline has been fixed. Engineering samples and/or test data may be available. Commitment to produce in volume is not guaranteed.

• **North America** Tel: 800.366.2266 / Fax: 978.366.2266
• **Europe** Tel: 44.1908.574.200 / Fax: 44.1908.574.300
• **Asia/Pacific** Tel: 81.44.844.8296 / Fax: 81.44.844.8298
Visit www.macomtech.com for additional data sheets and product information.

M/A-COM Technology Solutions Inc. and its affiliates reserve the right to make changes to the product(s) or information contained herein without notice.