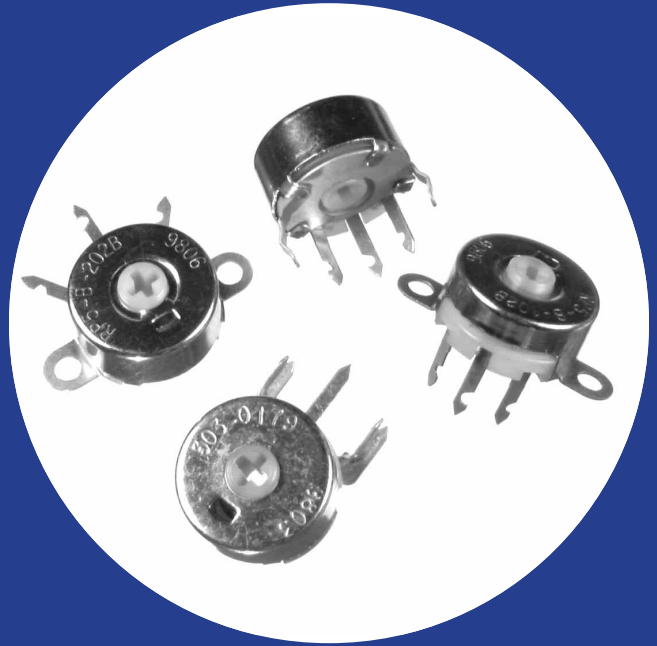


## Commercial 3/4" (19.05mm) diameter, 2 watt variable resistor

- Fully enclosed construction
- Four mounting styles
- Long rotational life
- Optional grounded or insulated rotor construction
- Incorporated fixed resistor available
- Available with nylon shaft
- Interchangeable mounting with CTS series 110 preset potentiometers



## Electrical and Mechanical Specifications

### Resistance Range

1 ohm through 20K ohms (linear taper)

### Resistance Tolerance

Available:  $\pm 5\%$ ,  $\pm 10\%$ ,  $\pm 20\%$

### Power Rating, Watts

Standard: 2 watts @ 55°C, derated to no load @ 105°C  
linear taper, control mounted on metal panel  
4" x 4" x .050" (101.6mm x 101.6mm x 1.27mm)

### Voltage Rating

*Terminals to case (insulated types only)*  
High pot test, one minute — 900 VAC  
Operating maximum — 500 VDC

### *Across end terminals*

Determined by resistance value and wattage rating

### Resistance Taper

Linear ( $\pm 3\%$  independent linearity, standard)

### Taps

None

### Incorporated Fixed Resistor

A fixed resistor can be incorporated in the Series 115 at the end of CW or CCW rotation to a minimum of 15% of the total resistance value. The rotation is shortened by an amount proportional to the ratio of the fixed resistor to the total resistance value.

### Angle of Rotation

270°  $\pm$  5°

### Adjustment of Resistance

Standard: Cross slot provided in rotor for screwdriver adjustment.

Special: Molded nylon, screwdriver-slotted shafts which are integral with rotor are available in many lengths in increments of 1/8" (3.2mm) up to a maximum of 2" (50.8mm).

### Available Mounting Types

Printed circuit mounted: Type 115  
Twist tab mounted: Type P115  
Ear mounted: Type 116  
Rivet ear mounted: Type 117

### Terminal Information

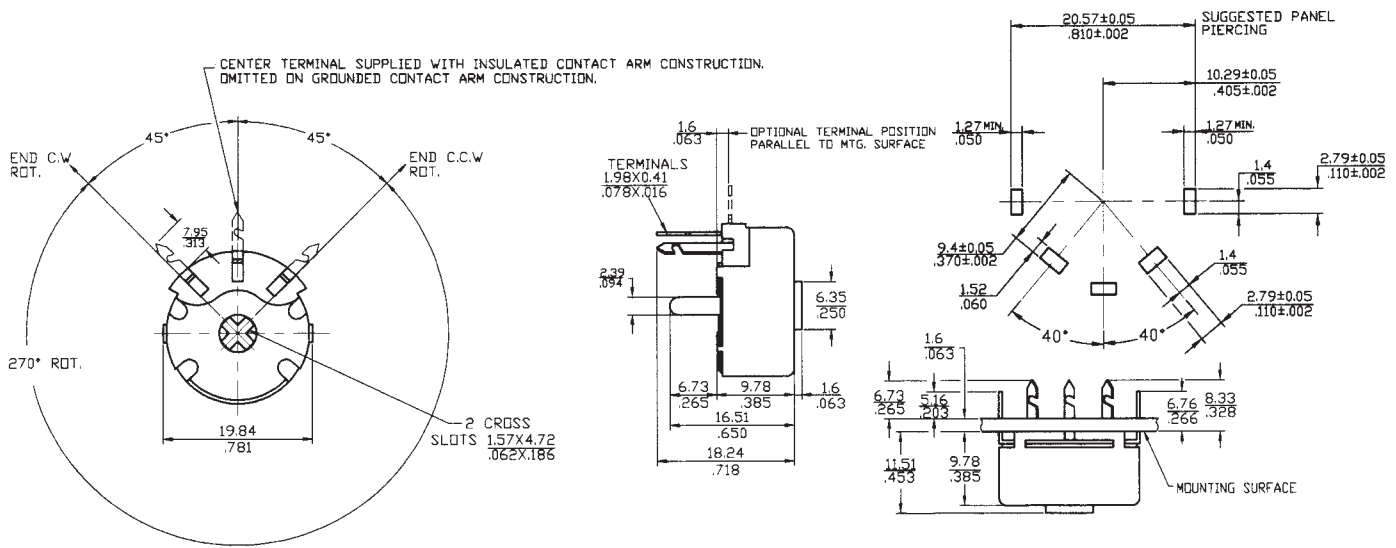
*Grounded Construction* — The grounded construction is supplied without a center terminal and the contactor is connected to the case. This construction can be furnished with one end terminal at either end of the resistance element or with terminals at both ends of the element.

*Insulated Construction* — The contactor is insulated from the base and connected to the center terminal on the insulated construction. This construction can be supplied with the center terminal and one end terminal at either end of the resistance element or with the center terminal and terminals at both ends of the resistance element.

### Rotational Torque

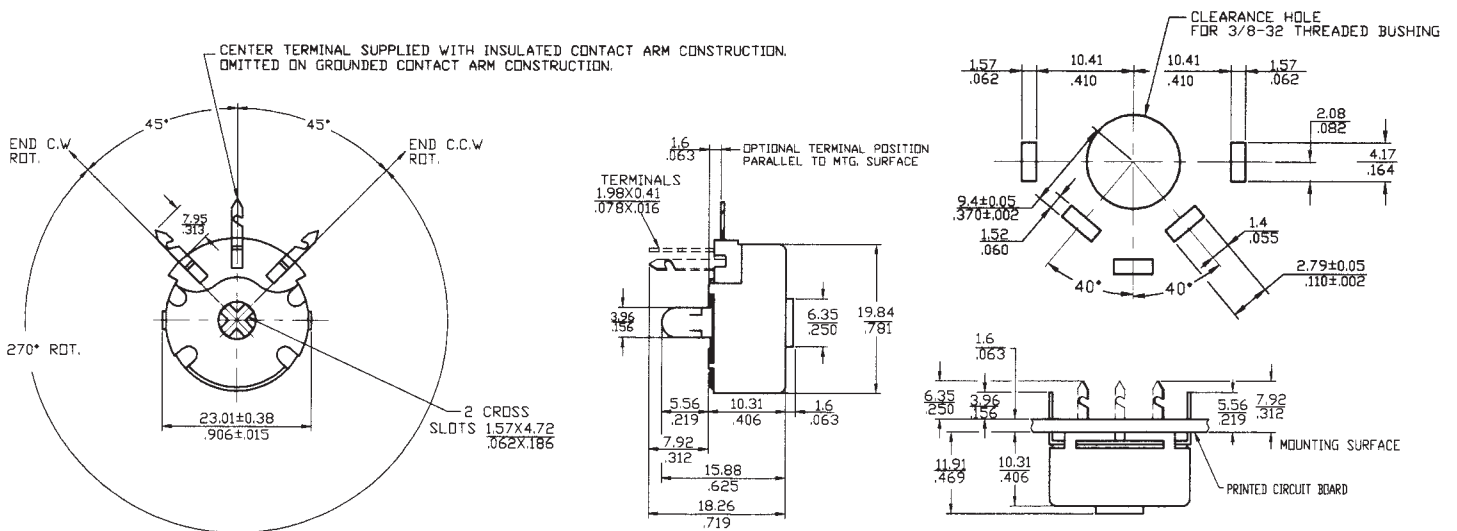
Turning Torque: 1/2 to 10 inch-ounces (36 – 720 g-cm)  
Stop Strength: 4 inch-pounds (4.6 Kg-cm)

# Type 115, P.C. Mounted



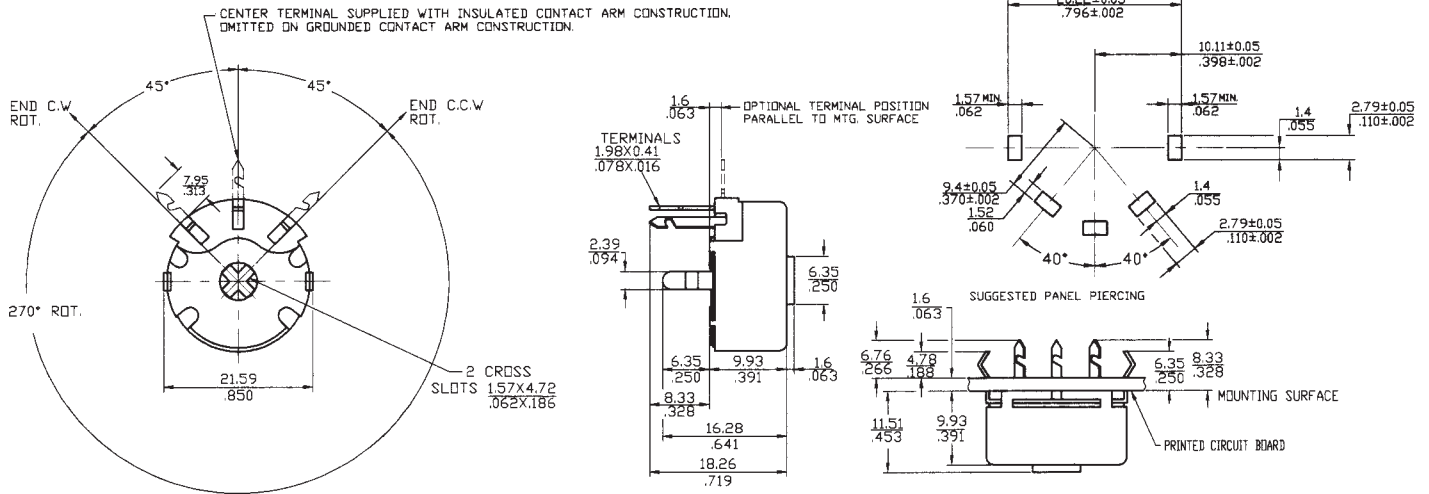
DIMENSION:  $\frac{\text{MM}}{\text{INCH}}$

# Type P115, Twist Tab Mounted



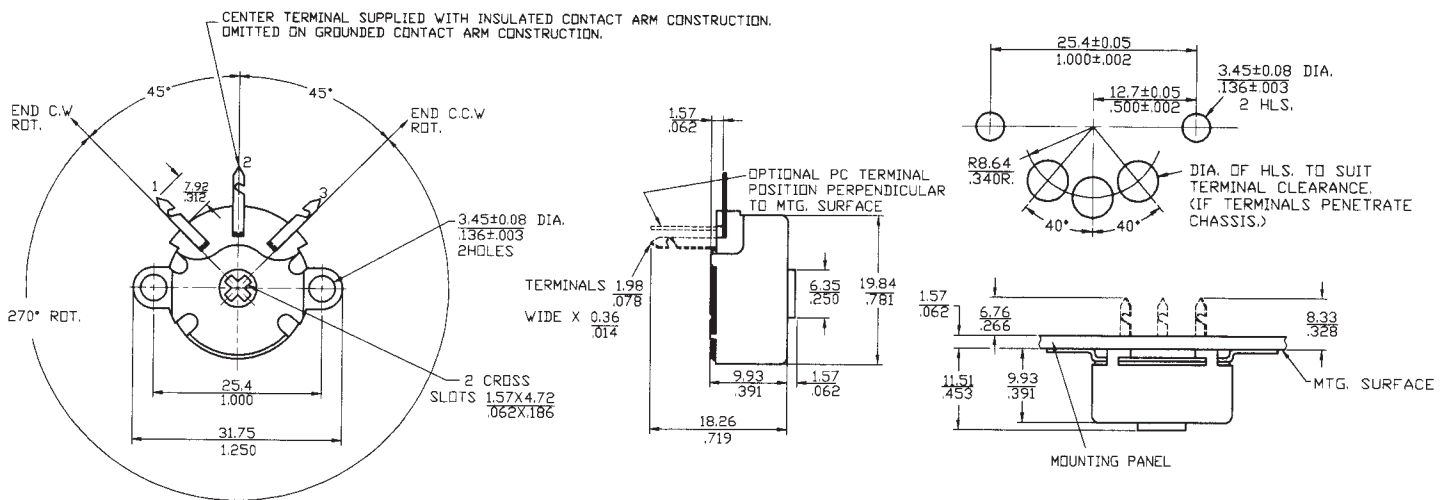
DIMENSION:  $\frac{\text{MM}}{\text{INCH}}$

# Type 116, Ear Mounted



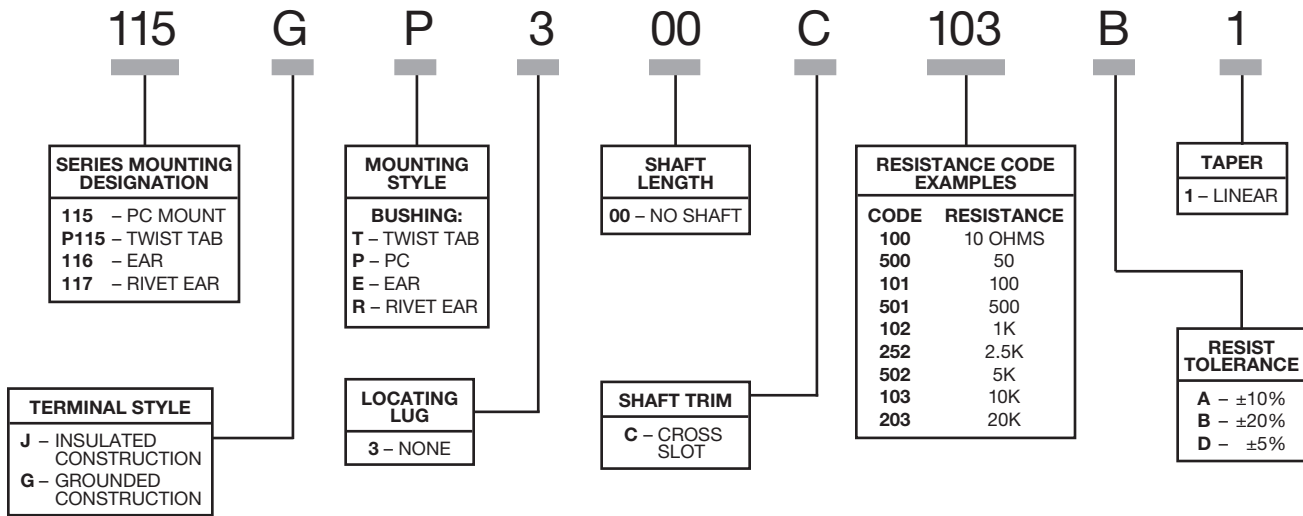
DIMENSION:  $\frac{\text{MM}}{\text{INCH}}$

# Type 117, Rivet Ear Mounted



DIMENSION:  $\frac{\text{MM}}{\text{INCH}}$

## Ordering Information



## Order From:

**CTS CORPORATION, ELECTROCOMPONENTS** / 1601 Mishawaka Street / Elkhart, Indiana 46514  
 North America Toll Free (888) 287-4690 / (219) 296-6700 / FAX: (219) 293-1240 <http://www.ctscorp.com>

**CTS COMPONENTS TAIWAN, LTD.** / 7, Central 6th Road (Chung Liu Road) / P.O. Box 26-20  
 Kaohsiung Export Processing Zone / Kaohsiung, Taiwan, Rep. of China  
 (07) 8216145 / FAX: (07) 8417642.8110040