

Features

- Uses wiring-easy terminal block.
- The super high μ core allows high attenuation.
- Bleed resistor for electric shock protection.

Applications

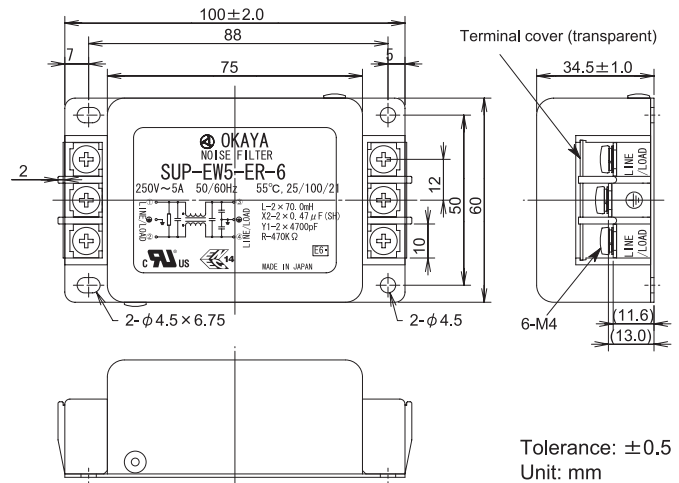
- Information processing devices, Office appliances, and Various control systems (elevators).



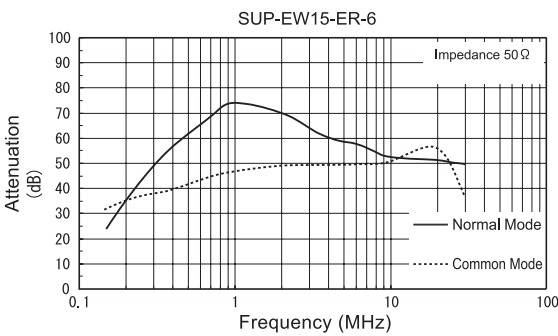
Safety Agency : Standard	File No.
UL : UL-1283	E78644
C-UL : C22.2, NO.8-M1986	E78644
SEMKO : EN133200	SE/0142-12

The "ENCE" mark is a common European product certification mark based on testing to harmonised European safety standard.

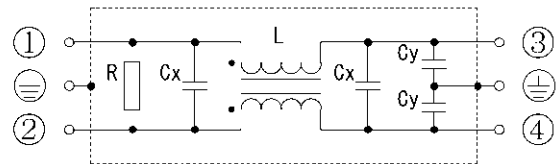
Dimensions (5~30A)



Static characteristics



Circuit (5~30A)



Electrical Specifications

Rated Voltage **250VAC**

Safety Agency	Model Number	Rated Current (A)	Test Voltage	Insulation Resistance	Leakage Current (max)	Voltage Drop (max)	Temperature Rise (max)	Operating Temperature (°C)
	SUP-EW5-ER-6	5	Line to Ground 2500Vrms 50/60Hz 60sec	Line to Ground 100MΩmin (at 500V _{DC})	1mA (at 250Vrms 60Hz)	1.0Vrms	45K	-25 ~ +55
	SUP-EW10-ER-6	10						
	SUP-EW15-ER-6	15						
	SUP-EW20-ER-6	20						
	SUP-EW30-ER-6	30						