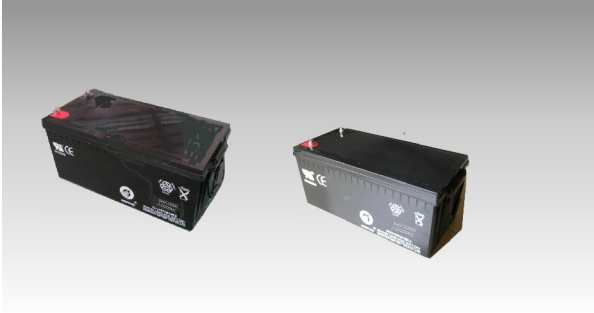




SWG122000(12V200AH)



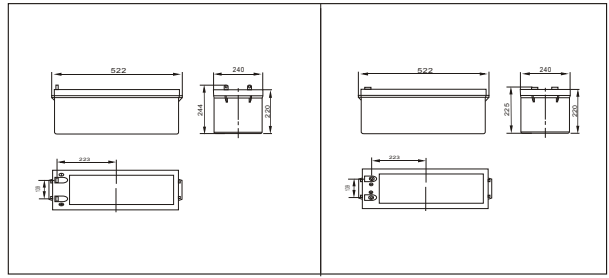
Specifications

Nominal Voltage		12V
Rated capacity (20hour rate)		200 Ah
Dimensions	Total Height	244 mm (9.60 inches)
	Height	220 mm (8.66 inches)
	Length	522 mm (20.6 inches)
	Width	240 mm (9.45 inches)
Weight Approx		67 Kg (148 lbs)

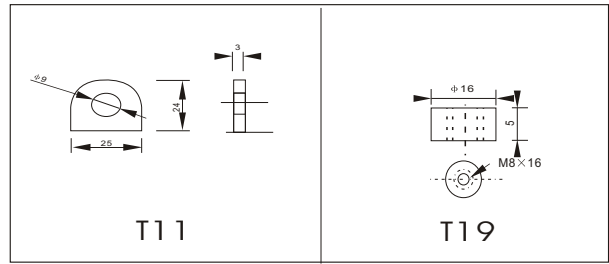
Characteristics

Capacity 25°C(77°F)	20 hour rate(10A)	200 AH
	10 hour rate(18.4A)	184 AH
Capacity affected by Temperature (10hour rate)	5 hour rate(29.4A)	147 AH
	1 hour rate(110 A)	110 AH
	40°C(104°F)	102%
Self-Discharge at 25°C(77°F)	25°C(77°F)	100%
	0°C(32°F)	85%
	-15°C(5°F)	65%
Terminal	Capacity after 3 month storage	91%
	Capacity after 6 month storage	82%
	Capacity after 12 month storage	64%
Terminal		T11 T19
Charge (constant Voltage)	Cycle	Initial Charging Current less than 73 A Voltage 14.10-14.40V
	Float	Voltage 13.50-13.80V

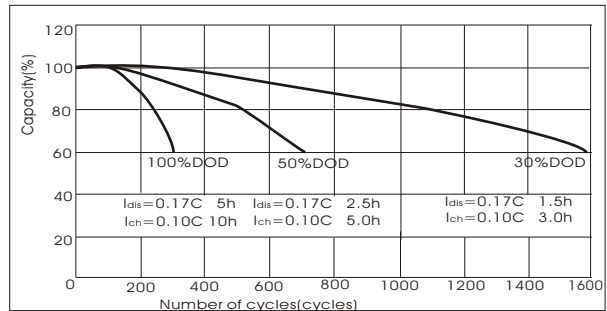
Outer dimensions (mm)



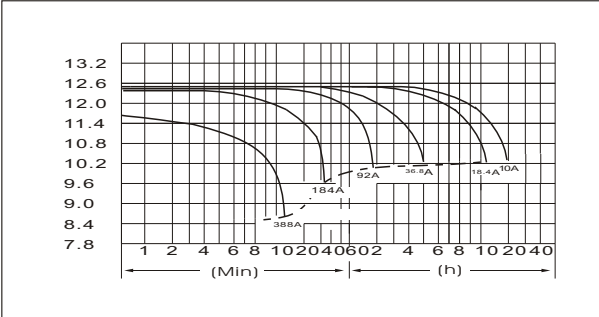
Terminal Type (mm)



Curves of cycle life(25°C)



Discharge Curves 25°C(77°F)



Constant Current(Amp) and Constant Power(Watt) Discharge Table at 25°C(77°F)

Time		5min	10min	15min	30min	1h	2h	3h	4h	5h	8h	10h	20h
960V	A	589	388	313	210	110	64	47.3	36.8	30.4	21.5	19.3	10.4
	W	6082	4146	3356	2255	1192	707	526.3	414.0	345.2	246.7	223.1	121.3
1020V	A	571	350	295	201	104	61	46.0	35.9	29.8	21.0	19.0	10.1
	W	6096	3912	3298	2251	1174	708	532.7	417.2	347.5	245.4	222.6	118.7
1050V	A	552	313	258	188	100	60	44.9	35.3	29.4	20.8	18.6	10.1
	W	6030	3565	2942	2160	1163	696	523.1	413.3	345.2	244.5	219.9	119.6
1080V	A	532	295	240	173	97	59	43.8	34.8	28.7	20.2	18.4	9.9
	W	5970	3406	2760	2004	1131	685	516.3	410.6	339.3	239.8	218.7	118.3
11.10V	A	514	277	221	155	94	57	42.3	33.9	28.0	19.7	17.5	9.4
	W	5832	3205	2574	1808	1104	674	502.8	403.2	333.8	235.8	211.0	113.7