

Directional Couplers (SMA / TAB Type)

Dimensions

Instances of Dimension

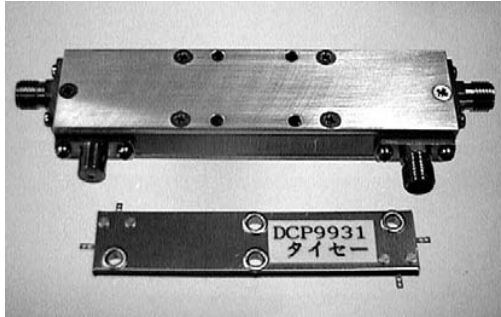
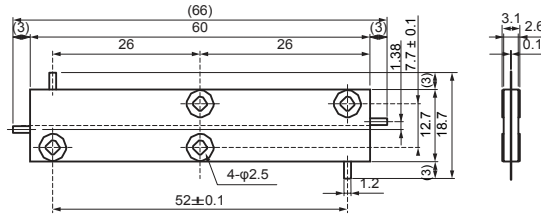


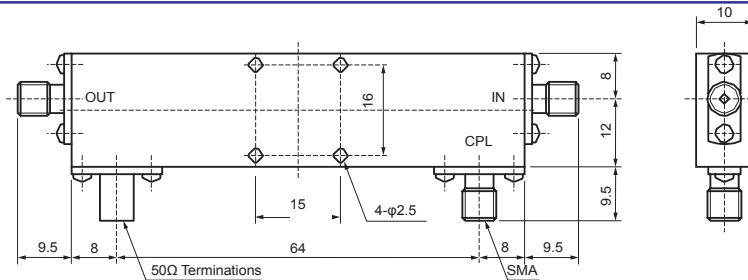
Fig. 1 TAB Type



Unit:mm

Fig. 2

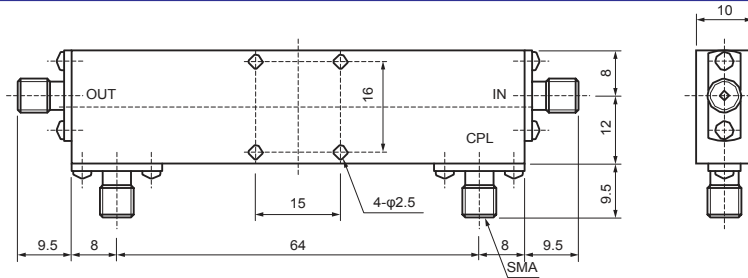
SMA Type



Unit:mm

Fig. 3

SMA Type



Unit:mm

Specifications

- SMA Type -

| Style No. | fr [MHz] | IL [dB] | Pf [dB] | DI [dB] | Pi [W] | Connector | Fig. |
|-------------|-----------|---------|---------|---------|--------|-----------|-------|
| DCP1833-10 | 400~800 | 0.70 | 10.0 | 20.0 | 50.0 | SMA | *3 |
| DCP1833-30 | 400~800 | 0.30 | 30.0 | 20.0 | 50.0 | SMA | *2 |
| DCP1831-10D | 500~1000 | 0.70 | 10.0 | 20.0 | 5.0 | SMA | Fig.2 |
| DCP1831-20 | 500~1000 | 0.40 | 20.0 | 20.0 | 50.0 | SMA | *2 |
| DCP1831-30 | 500~1000 | 0.30 | 30.0 | 20.0 | 50.0 | SMA | Fig.3 |
| DCP1831-41 | 500~1000 | 0.30 | 41.0 | 20.0 | 50.0 | SMA | Fig.3 |
| DCP1831-50 | 500~1000 | 0.30 | 50.0 | 20.0 | 50.0 | SMA | Fig.3 |
| DCP1052-10D | 1000~2000 | 0.80 | 10.0 | 20.0 | 5.0 | SMA | *2 |
| DCP1052-20D | 1000~2000 | 0.40 | 20.0 | 20.0 | 50.0 | SMA | *2 |
| DCP1051-10D | 1350~1650 | 0.80 | 10.0 | 20.0 | 5.0 | SMA | *2 |
| DCP1051-20D | 1350~1650 | 0.40 | 20.0 | 20.0 | 50.0 | SMA | *2 |
| DCP1952-10D | 1500~2500 | 0.80 | 10.0 | 20.0 | 5.0 | SMA | *2 |
| DCP1952-20D | 1500~2500 | 0.40 | 20.0 | 20.0 | 50.0 | SMA | *2 |
| DCP1952-30D | 1500~2500 | 0.30 | 30.0 | 18.0 | 50.0 | SMA | *2 |
| DCP1951-10D | 1800~2200 | 0.80 | 10.0 | 20.0 | 5.0 | SMA | *2 |
| DCP1951-20D | 1800~2200 | 0.40 | 20.0 | 20.0 | 50.0 | SMA | *2 |
| DCP1951-30D | 1800~2200 | 0.30 | 30.0 | 18.0 | 50.0 | SMA | *2 |

- TAB Type -

| Style No. | fr [MHz] | IL [dB] | Pf [dB] | DI [dB] | Pi [W] | Terminal | Fig. |
|------------|-----------|---------|---------|---------|--------|----------|-------|
| DCP9931-10 | 800~1000 | 0.90 | 10.0 | 20.0 | 25.0 | TAB | Fig.1 |
| DCP9951-10 | 1400~1600 | 0.40 | 10.0 | 20.0 | 25.0 | TAB | *2 |

*1 As to the item with directive terminal connected to directly the termination, this is shown the alphabet D for the last digit of this item.

*2 Please consult for the dimensions.

*3 Complied with custom designed requirements.

fr : Frequency Range

IL : Insertion Loss

Pf : Coupling

DI : Directivity

Pi : Input Power

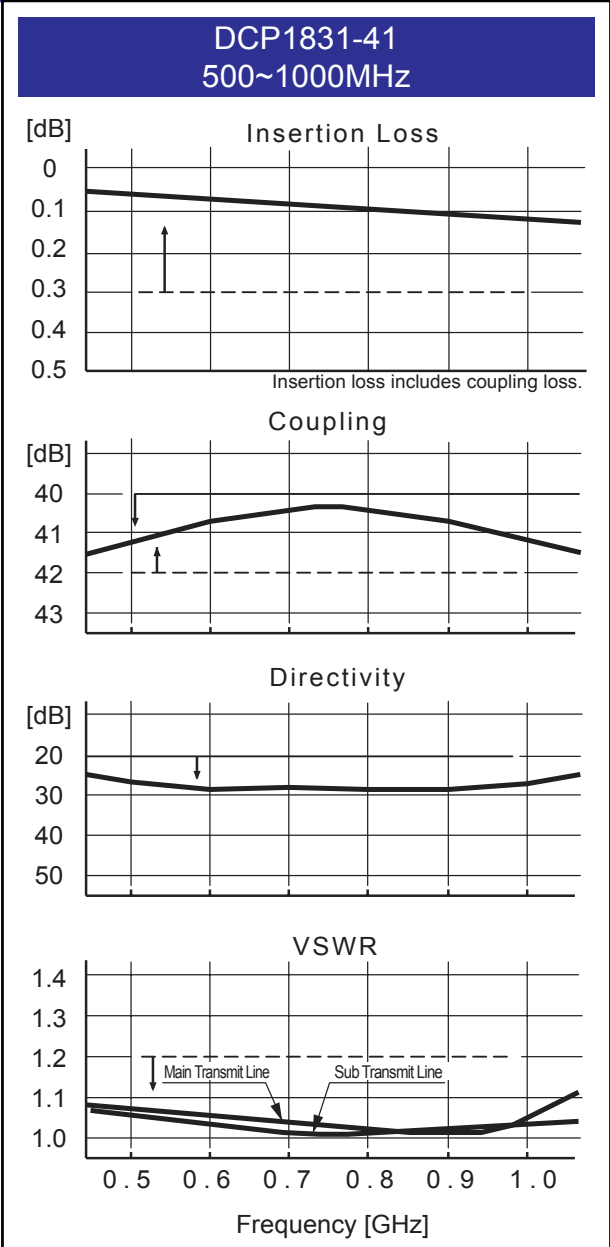
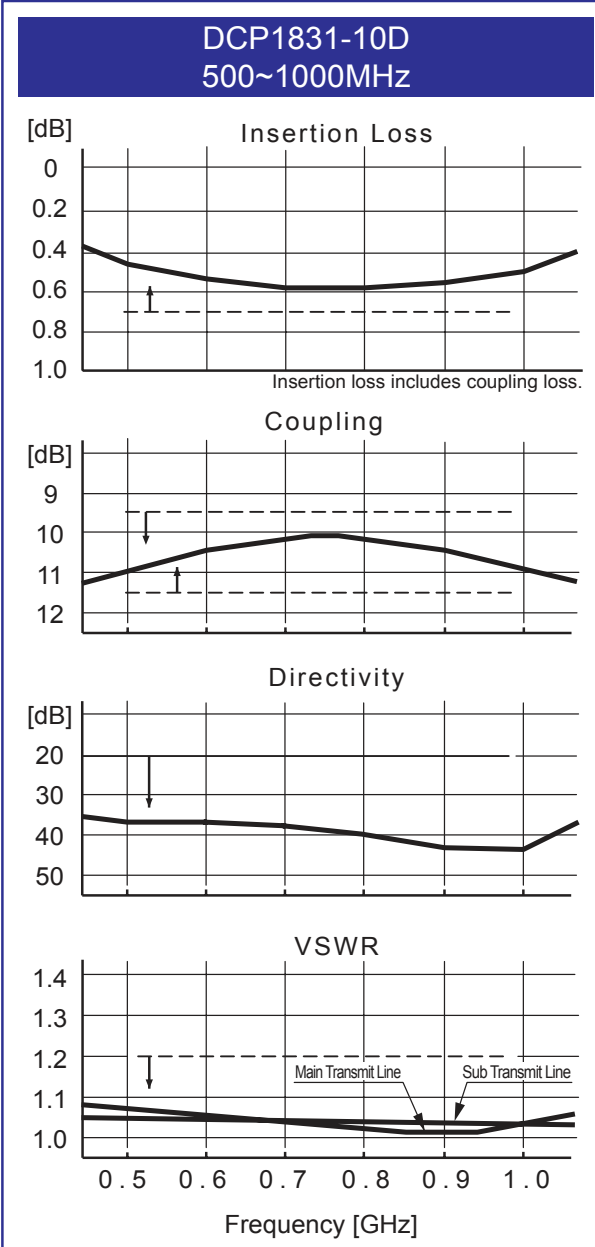


Directional Couplers

The content of this specification may change without notification 09/18/08



Typical Performance



Specifications of products are subject to change without notice.



188 Technology Drive, Unit H, Irvine, CA 92618
TEL: 949-453-9888 • FAX: 949-453-8889