



# BP320240D

## Feature

1. FSTN LCD, TAB IC and PCB package
2. LCD driver only(Recommending SED1335 Controller)
3. +3V ~ +5V single power supply,  
with built-in positive voltage for LCD driving
4. 1/240 duty cycle
5. Option: EL B/L & EL inverter
6. Option: Touch panel & touch panel controller

## Mechanical Data

Item	Standard Value	Unit
Module Dimension	85.0 x 98.2	mm
Viewing Area	62.0 x 81.8	mm
Dot Size	0.225 x 0.225	mm
Dot Pitch	0.24 x 0.24	mm

## Pin Assignment

Pin	Symbol	Function
1~4	DB0-3	Data bus
5	/Dispoff	L:display off
6	FLM	Start line signal
7	M	Alternate signal
8	LP	Data latch clock
9	CP	Data shift clock
10	Vdd	Power supply (+3V ~ +5V)
11	Vss	Power supply (GND)
12	EL-on	H:EL on
13	Vadj	Contrast adjustment
14	/RST	Reset signal
15	SK*/X1**	Serial clock/touch panel left signal (X axis)
16	D0*/X2**	Data output/touch panel right signal (X axis)
17	D1*/Y1**	Data input/touch panel upper signal (Y axis)
18	CS*/Y2**	Chip select/touch panel lower signal (Y axis)
19	INT	Interrupt signal for Touch Panel controller
20~21	EL1- EL2	Power supply for EL B/L (for external EL inverter)
22~24	NC	



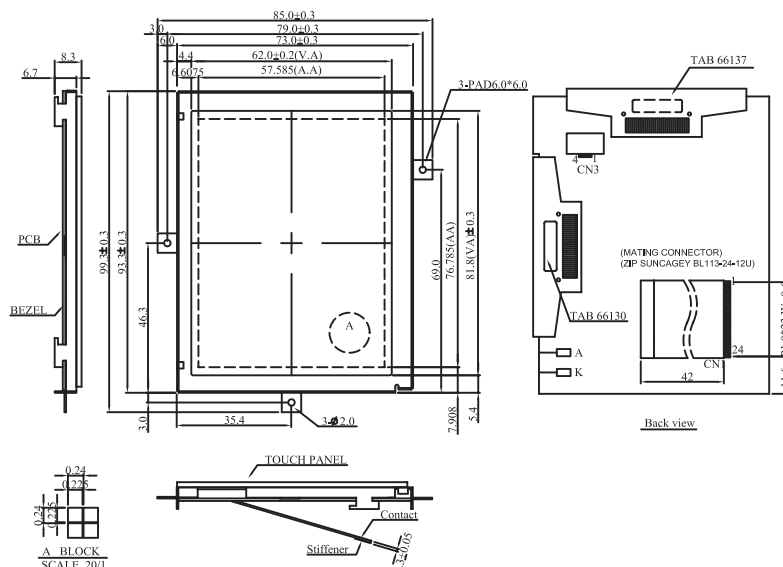
(Options : Frame without ears)



## Electronic Characteristics

Item	Symbol	Condition	Typical Value	Unit
Input Voltage	Vdd	Vdd = +5.0V	5.0	V
Supply Current	Idd	Vdd = +5.0V	15	mA
LCD Driving Voltage	Vlcd	Vadj-Vss	0.5	V
Built-in EL Inverter Supply Current	Iel	Vel = +3.3V	55	mA

## Dimension



The non-specified tolerance of dimension is ±0.3 mm .