

PLEASE CHECK WWW.MOLEX.COM FOR LATEST PART INFORMATION

Part Number: [0945105310](#)
Status: **Active**
Description: Fork Terminal Housing, Right Angle, Polarization A, 3 Circuits

Documents:

[Drawing \(PDF\)](#) [RoHS Certificate of Compliance \(PDF\)](#)
[Product Specification PS-94509-002 \(PDF\)](#)

General

Product Family Crimp Housings
 Series [94510](#)
 Product Name Fork Terminal

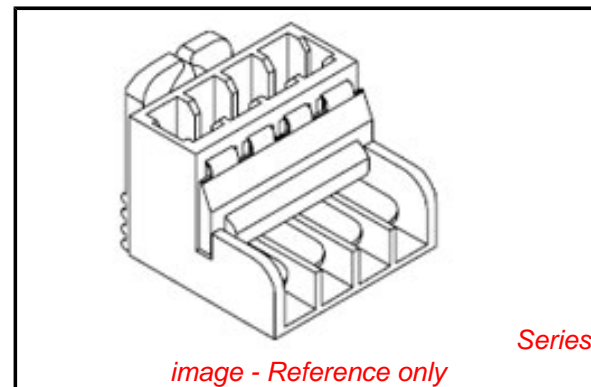
Physical

Circuits (maximum) 3
 Color - Resin Natural
 Gender Female
 Glow-Wire Compliant No
 Keying to Mating Part Yes
 Lock to Mating Part Yes
 Material - Resin Nylon
 Number of Rows 1
 Packaging Type Bag
 Panel Mount No
 Pitch - Mating Interface (in) 0.197 In
 Pitch - Mating Interface (mm) 5.00 mm
 Temperature Range - Operating -40°C to +85°C

Material Info

Reference - Drawing Numbers

Product Specification PS-94509-002
 Sales Drawing SD-94510-001



EU RoHS

**ELV and RoHS
 Compliant**
REACH SVHC
 Not Reviewed
**Halogen-Free
 Status**
Not Reviewed

China RoHS



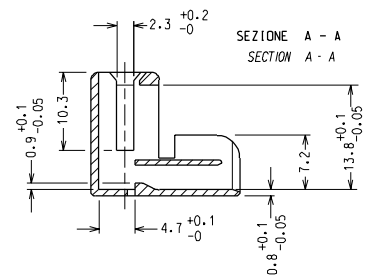
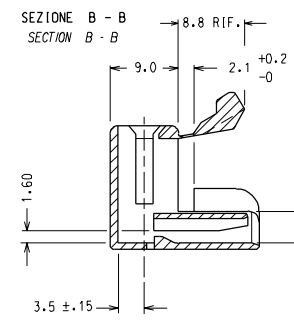
**Need more information on product
 environmental compliance?**

Email productcompliance@molex.com
 For a multiple part number RoHS Certificate of
 Compliance, [click here](#)

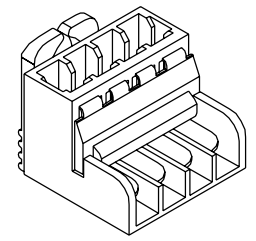
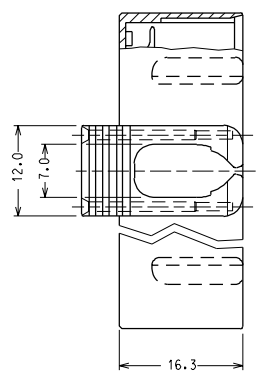
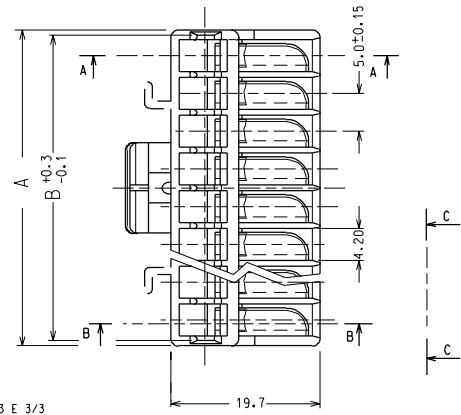
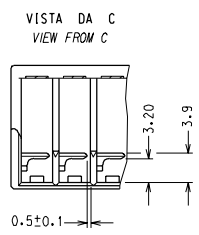
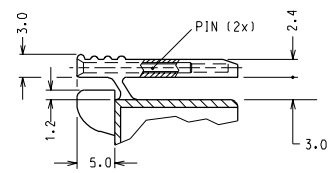
Please visit the [Contact Us](#) section for any
 non-product compliance questions.

Search Parts in this Series
[94510Series](#)

Use With
 N/A



N.° VIE CKT.	2	3	4	5	6	7	8
A	11.8	16.8	21.8	26.8	31.8	36.8	41.8
B	10.4	15.4	20.4	25.4	30.4	35.4	40.4



VISTA DELL'HOUSING
CON SECONDARY LOCK CHIUSO
VIEW OF THE HOUSING WITH
THE SEC. LOCK IN LOCKED POSITION

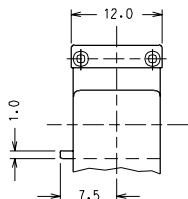
- NOTE: 1) MATERIALI: - HOUSING: PA 66 NATURALE
- PIN: ACCIAIO INOX
2) PER CODICI E POLARIZZAZIONI VEDERE FOGLI 2/3 E 3/3
3) LE DIMENSIONI VANNO MISURATE CON CORPI STABILIZZATI SECONDO NG 2301
(AUMENTO IN PESO DEL 2,7 %)
4) CARATTERISTICHE DEL PRODOTTO SECONDO PS-94509
5) CONFEZIONE: IN SACCHETTI DI NYLON POSTI IN SCATOLE DI CARTONE
(VEDERE FOGLI 2/3 E 3/3 PER LE QUANTITA')

- NOTES: 1) MATERIALS: - HOUSING: PA 66 NATURAL COLOR
- PIN: STAINLESS STEEL
2) SEE SHEETS 2/3 AND 3/3 FOR PART NOS AND POLARIZATIONS
3) PARTS SHALL BE DIMENSIONALLY CHECKED AFTER ATTAINING EQUILIBRIUM CONDITIONS
E.G. 27 % INCREASE IN WEIGHT FOR HUMIDITY ABSORPTION FROM DRY STATUS
4) PRODUCT CHARACTERISTICS ACCORDING TO PS-94509
5) PACKAGING: IN PLASTIC BAGS IN CARTON BOXES
(SEE SHEETS 2/3 AND 3/3 FOR QUANTITIES)

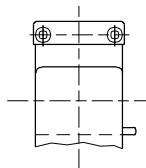
3	A4
2	A4
1	A4

EC NO. Z2001-0010 DRAWING: BARBIERI - 18-09-00 CHK'G: M. TESTAGAZZA - 18-09-00 APPR'R: MARUCCI - 18-09-00	QUALITY SYMBOLS MAJOR M SIGNIF. S CRITICAL C	GENERAL TOLERANCES: (UNLESS SPECIFIED)		SCALE 2:1	DESIGN UNITS mm <input type="checkbox"/> INCH <input checked="" type="checkbox"/>	FIRST ANGLE PROJECTION <input checked="" type="checkbox"/>	DIMENSIONS:			SHT	REV
		mm	INCH				mm	INCH	mm		
A4	REV	4 PLACES	±0.1	±	DRAWN BY & DATE S. BARBIERI - 21-01-91	TITLE: HOUSING PER CONTATTO A FORCELLA A 90° CON PINS IN ACCIAIO HOUSING FOR R/A FORK TERMINAL WITH STEEL PINS	MATERIAL NO. SEE TABLES	DRAWING NO. SD-94510-001	SHEET NO. 1/3	THIS DRAWING CONTAINS INFORMATION THAT IS PROPRIETARY TO MOLEX INCORPORATED AND SHOULD NOT BE USED WITHOUT WRITTEN PERMISSION.	SIZE A3
		3 PLACES	±0.1	±	CHECKED BY & DATE						
		2 PLACES	±0.1	±	APPROVED BY & DATE M. PREVIATO - 21-01-91						
		1 PLACE	±0.2	±	CAD FILENAME 94510001.DGN						
		ANGULARS: ± 2°		DRAFT WHERE APPLICABLE MUST REMAIN WITHIN DIMENSIONS							

SCHEMA POLARIZZAZIONI PER HOUSING A 2 VIE:



POLARIZZAZIONE TIPO "A"

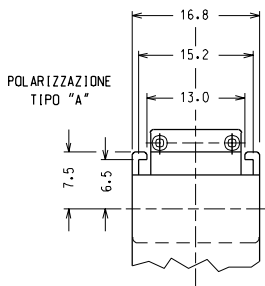


POLARIZZAZIONE TIPO "B"

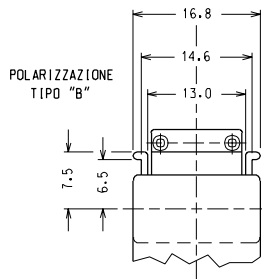
N.° VIE CKT	CODICE HOUSING/TIPO POLARIZZAZIONE HOUSING P/N / POLARIZATION		PEZZI/SCATOLA PCS/BOX
	A	B	
2	94510-5210 *	94510-5220 *	3000

NOTA: QUESTA VERSIONE E' FORNITA SENZA PIDLINI IN ACCIAIO
NOTE: THIS VERSION IS SUPPLIED WITHOUT STEEL PINS

SCHEMA POLARIZZAZIONI PER HOUSING A 3 VIE



POLARIZZAZIONE TIPO "A"



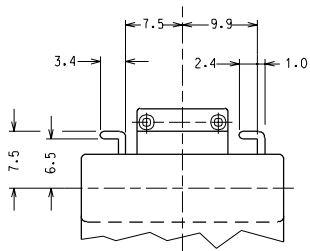
POLARIZZAZIONE TIPO "B"

N.° VIE CKT	CODICE HOUSING/TIPO POLARIZZAZIONE HOUSING P/N / POLARIZATION		PEZZI/SCATOLA PCS/BOX
	A	B	
3	94510-5310	94510-5320	4500

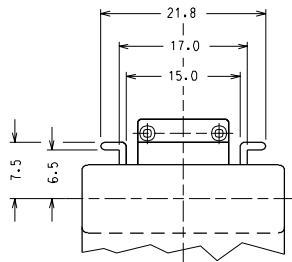
* VERSIONE NON ATTREZZATA
NOT TOOLED

EC NO. Z2001-0010 DRINGH. BARBIERI 18-09-00 CH/3: M. TESTAGAZZA 18-09-00 APPR. R. MARUCCI 18-09-00	QUALITY SYMBOLS MAJOR M SIGNIF. S CRITICAL C	GENERAL TOLERANCES: (UNLESS SPECIFIED)		SCALE: 2:1	DESIGN UNITS: <input checked="" type="checkbox"/> mm <input type="checkbox"/> INCH	DIMENSIONS: <input type="checkbox"/> mm <input type="checkbox"/> INCH <input checked="" type="checkbox"/> mm ONLY	SHT. REV REVISE ON CAD ONLY
		mm	INCH	DRAWN BY & DATE S. BARBIERI 21-01-91	CHECKED BY & DATE		
A4	REV	4 PLACES	±0.2	±.	APPROVED BY & DATE M. PREVIATO 21-01-91	TITLE: HOUSING PER CONTATTO A FORCELLA A 90° CON PINS IN ACCIAIO HOUSING FOR R/A FORK TERMINAL WITH STEEL PINS	MATERIAL NO. SEE TABLES
		3 PLACES	±0.2	±.	CAD FILENAME 94510001.S01		
DRAFT WHERE APPLICABLE MUST REMAIN WITHIN DIMENSIONS		ANGULARS: ± 2°		THIS DRAWING CONTAINS INFORMATION THAT IS PROPRIETARY TO MOLEX INCORPORATED AND SHOULD NOT BE USED WITHOUT WRITTEN PERMISSION.			

SCHEMA POLARIZZAZIONI PER HOUSING A 4 E 5 VIE



POLARIZZAZIONE TIPO "A"

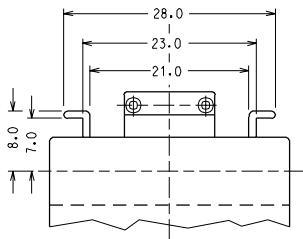


POLARIZZAZIONE TIPO "B"

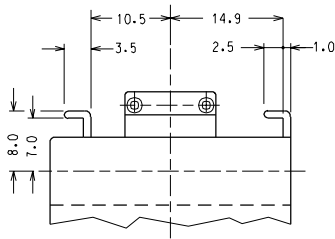
N.° VIE CKT	CODICE HOUSING/TIPO POLARIZZAZIONE HOUSING P/N / POLARIZATION		PEZZI/SCATOLA PCS/BOX
	A	B	
4	94510-5410	94510-5420	3500
5	94510-5510 *	94510-5520 *	2000

* VERSIONE NON ATTREZZATA
* NOT TOOLED

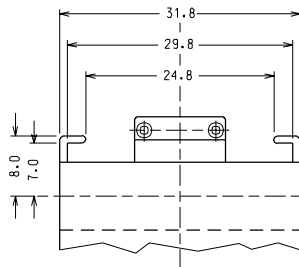
SCHEMA POLARIZZAZIONI PER HOUSING A 6, 7 E 8 VIE



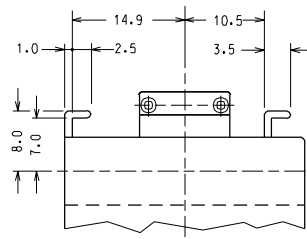
POLARIZZAZIONE TIPO "A"



POLARIZZAZIONE TIPO "B"



⚠ POLARIZZAZIONE TIPO "C"



⚠ POLARIZZAZIONE TIPO "D"

NOTA: ⚠ SOLO PER VERSIONE A 8 VIE
FOR 8 CKT VERSION ONLY

N.° VIE CKT	CODICE HOUSING/TIPO POLARIZZAZIONE HOUSING P/N / POLARIZATION				PZ/SCATOLA PCS/BOX
	A	B	C	D	
6	94510-5610	94510-5620 *			2500
7	94510-5710 *	94510-5720 *			1500
8	94510-5810 *	94510-5820 *	94510-5830 *	94510-5840 *	1300

EC NO. Z2001-0010 DRAWING: BARBIERI 18-09-90 CHK: M. TESTAGAZZA 18-09-90 APPR: R. MARUCCI 18-09-90	QUALITY SYMBOLS MAJOR M/ = SIGNIF. S/ = CRITICAL C/ =	GENERAL TOLERANCES: (UNLESS SPECIFIED)	SCALE 2:1	DESIGN UNITS mm INCH	DIMENSIONS: <input type="checkbox"/> mm <input type="checkbox"/> INCH <input checked="" type="checkbox"/> mm ONLY	SHT REV	
		4 PLACES ±0.1 ±. 3 PLACES ±0.1 ±. 2 PLACES ±0.1 ±. 1 PLACE ±0.2 ±.	DRAWN BY & DATE S. BARBIERI 21-01-91	CAD FILE NAME 94510001.502			TITLE: HOUSING PER CONTATTO A FORCELLA A 90° CON PINS IN ACCIAIO HOUSING FOR R/A FORK TERMINAL WITH STEEL PINS
A4	REV	DRAFT WHERE APPLICABLE MUST REMAIN WITHIN DIMENSIONS	APPROVED BY & DATE M. PREVIATO 21-01-91	CAD FILE NAME 94510001.502	MATERIAL NO. SEE TABLES	DRAWING NO. SD-94510-001	SHEET NO. 3/3
THIS DRAWING CONTAINS INFORMATION THAT IS PROPRIETARY TO MOLEX INCORPORATED AND SHOULD NOT BE USED WITHOUT WRITTEN PERMISSION.						SIZE A3	