

High Reliability Mixer

TUF-R2LHSM+

Level 10 (LO Power +10 dBm) 50 to 1000 MHz



CASE STYLE: NNN150
PRICE: \$10.85 ea. QTY (1-9)

+ RoHS compliant in accordance with EU Directive (2002/95/EC)

The +Suffix has been added in order to identify RoHS Compliance. See our web site for RoHS Compliance methodologies and qualifications.

Maximum Ratings

Operating Temperature	-55°C to 100°C
Storage Temperature	-55°C to 100°C
RF Power	50mW
IF Current	40mA

Pin Connections

LO	4
RF	1
IF	2
GROUND	3
CASE GROUND	3

Features

- hermetically sealed ceramic quad
- low conversion loss, 6.2 dB typ.
- excellent isolation L-R, 49 dB typ.; L-I, 44 dB typ.
- wideband, 50 to 1000 MHz
- rugged welded construction
- shielded metal case

Applications

- VHF/UHF
- cellular
- ISM/GSM

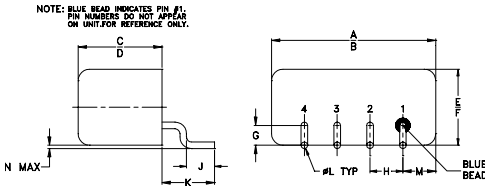
Electrical Specifications

FREQUENCY (MHz)	CONVERSION LOSS (dB)	LO-RF ISOLATION (dB)			LO-IF ISOLATION (dB)			IP3 at center band (dBm)										
		L	M	U	L	M	U											
50-1000	DC-1000	6.2	0.03	7.5	9.0	55	45	49	38	42	35	52	40	44	30	35	24	17

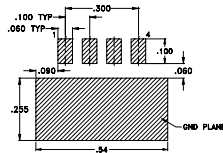
1 dB COMP.: +5 dBm typ.

L = 50-100 MHz M = 100-500 MHz U = upper range [$f_c/2$ to f_u]
m = mid band [$2f_l$ to $f_u/2$]

Outline Drawing



PCB Land Pattern

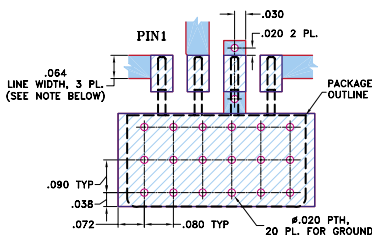


Suggested Layout, Tolerance to be within ±.002

Outline Dimensions (inch/mm)

A	B	C	D	E	F	G
.50	.48	.255	.240	.23	.21	.06
12.70	12.19	6.48	6.10	5.84	5.33	1.52
H	J	K	L	M	N	wt
.100	.09	.16	.020	.09	.005	grams
2.54	2.29	4.06	0.51	2.29	0.13	1.9

Demo Board MCL PIN: TB-201 Suggested PCB Layout (PL-081)

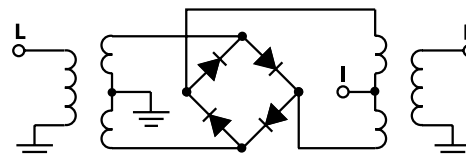


- NOTES: 1. TRACE WIDTH IS SHOWN FOR ROGERS R04350B WITH DIELECTRIC THICKNESS $0.030" \pm 0.002"$; COPPER: 1/2 OZ. EACH SIDE. FOR OTHER MATERIALS TRACE WIDTH MAY NEED TO BE MODIFIED.
2. BOTTOM SIDE OF THE PCB IS CONTINUOUS GROUND PLANE.
■ DENOTES PCB COPPER LAYOUT WITH SMOBC (SOLDER MASK OVER BARE COPPER)
■ DENOTES COPPER LAND PATTERN FREE OF SOLDER MASK

Typical Performance Data

Frequency (MHz)	Conversion Loss (dB)	Isolation L-R (dB)	Isolation L-I (dB)	VSWR RF Port (:1)	VSWR LO Port (:1)	
						LO +10dBm
50.10	80.10	6.19	60.26	52.94	1.10	2.28
130.10	160.10	6.11	55.17	47.10	1.03	2.34
210.10	240.10	6.05	52.42	44.40	1.05	2.34
250.10	280.10	6.08	51.75	43.65	1.08	2.25
290.10	320.10	6.02	50.74	42.83	1.11	2.28
330.10	360.10	6.06	49.93	42.12	1.11	2.25
370.10	400.10	6.06	49.17	41.74	1.15	2.23
410.10	440.10	6.09	49.14	40.96	1.14	2.24
450.10	480.10	6.07	48.54	40.07	1.17	2.20
490.10	520.10	6.09	47.02	38.75	1.15	2.22
530.10	560.10	6.18	45.69	37.73	1.16	2.19
610.10	640.10	6.26	44.68	35.90	1.18	2.20
650.10	680.10	6.28	44.91	35.55	1.23	2.18
730.10	760.10	6.41	44.98	34.52	1.26	2.17
770.10	800.10	6.48	44.73	33.37	1.21	2.18
810.10	840.10	6.58	43.60	32.67	1.16	2.18
850.10	880.10	6.70	42.59	31.98	1.13	2.17
930.10	960.10	6.99	41.76	31.53	1.09	2.17
970.10	1000.10	7.14	41.23	31.18	1.17	2.17
1010.10	1040.10	7.16	40.78	31.08	1.21	2.15

Electrical Schematic



Mini-Circuits
ISO 9001 ISO 14001 CERTIFIED

ALL NEW
minicircuits.com

P.O. Box 350166, Brooklyn, New York 11235-0003 (718) 934-4500 Fax (718) 332-4661 For detailed performance specs & shopping online see Mini-Circuits web site



The Design Engineers Search Engine Provides ACTUAL Data Instantly From MINI-CIRCUITS At: www.minicircuits.com

RF/IF MICROWAVE COMPONENTS

REV. OR
M109914
ED-12915/2
TUF-R2LHSM+
WL/AM
070516
Page 1 of 2

Performance Charts

TUF-R2LHSM+

