

**PLEASE CHECK WWW.MOLEX.COM FOR LATEST PART INFORMATION**

**Part Number:** [0353000452](#)  
**Status:** **Active**  
**Overview:** [kk](#)  
**Description:** 2.50mm (.098") Pitch Wire-to-Board KK® Header, Vertical, with Friction Ramp, Tube Packaged Version of 5045, 4 Circuits, Tin (Sn) Plating, Red

**Documents:**

[3D Model](#) [Product Specification PS-35300-001 \(PDF\)](#)  
[Drawing \(PDF\)](#) [RoHS Certificate of Compliance \(PDF\)](#)

**Agency Certification**

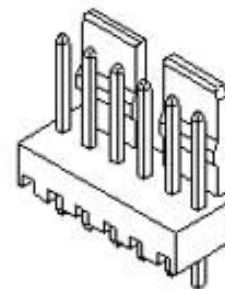
CSA LR 19980  
 UL E29179

**General**

Product Family PCB Headers  
 Series [35300](#)  
 Application Wire-to-Board  
 Overview [kk](#)  
 Product Name KK®

**Physical**

Breakaway No  
 Circuits (Loaded) 4  
 Circuits (maximum) 4  
 Color - Resin Natural  
 Durability (mating cycles max) 30  
 First Mate / Last Break No  
 Flammability 94V-0  
 Glow-Wire Compliant No  
 Guide to Mating Part No  
 Keying to Mating Part None  
 Lock to Mating Part Yes  
 Material - Plating Mating Tin  
 Material - Plating Termination Tin  
 Material - Resin Nylon  
 Number of Rows 1  
 Orientation Vertical  
 PCB Locator No  
 PCB Retention None  
 PCB Thickness Recommended (in) 0.062 In  
 PCB Thickness Recommended (mm) 1.60 mm  
 Packaging Type Tube  
 Pitch - Mating Interface (in) 0.098 In  
 Pitch - Mating Interface (mm) 2.50 mm  
 Plating min: Mating (µin) 200  
 Plating min: Mating (µm) 5  
 Plating min: Termination (µin) 200  
 Plating min: Termination (µm) 5  
 Polarized to Mating Part No  
 Polarized to PCB No  
 Shrouded No  
 Stackable No  
 Surface Mount Compatible (SMC) No  
 Temperature Range - Operating -40°C to +105°C  
 Termination Interface: Style Through Hole



Series

image - Reference only

**EU RoHS**  
**ELV and RoHS**  
**Compliant**  
**REACH SVHC**  
 Not Reviewed  
**Halogen-Free**  
**Status**  
**Not Reviewed**

**China RoHS**



**Need more information on product environmental compliance?**

Email [productcompliance@molex.com](mailto:productcompliance@molex.com)  
 For a multiple part number RoHS Certificate of Compliance, [click here](#)

Please visit the [Contact Us](#) section for any non-product compliance questions.

**Search Parts in this Series**

[35300Series](#)

**Mates With**

[5051 Housing](#), [51191 Housing](#)

**Electrical**

Current - Maximum per Contact

3A

Voltage - Maximum

250V

**Material Info****Reference - Drawing Numbers**

Packaging Specification

PK-35300-001

Product Specification

PS-35300-001

Sales Drawing

SD-35300-001, SD-35300-011

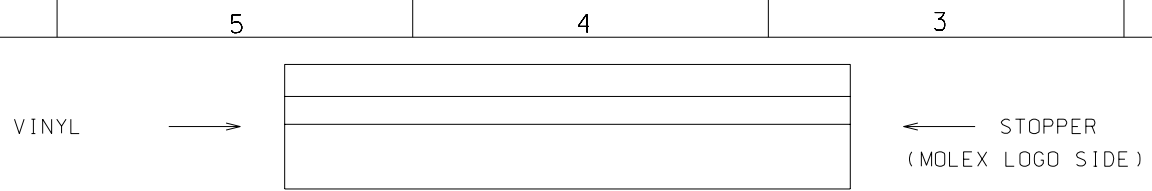
This document was generated on 05/24/2010

**PLEASE CHECK [WWW.MOLEX.COM](http://WWW.MOLEX.COM) FOR LATEST PART INFORMATION**

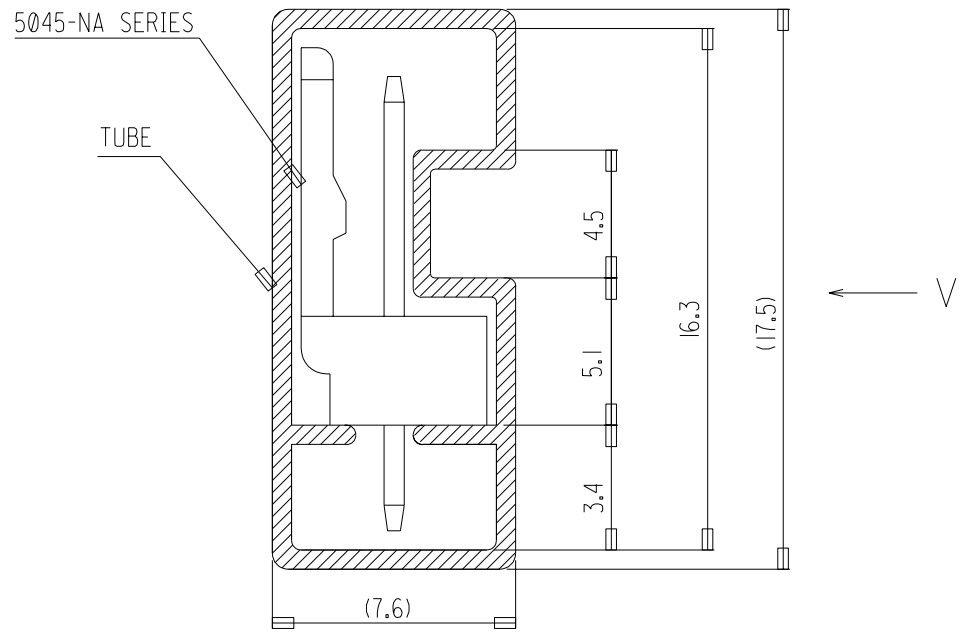
DWG. NO.  
SD-35300-001

SIMILAR ITEM

PROJECT NO.



VIEW V



NOTES

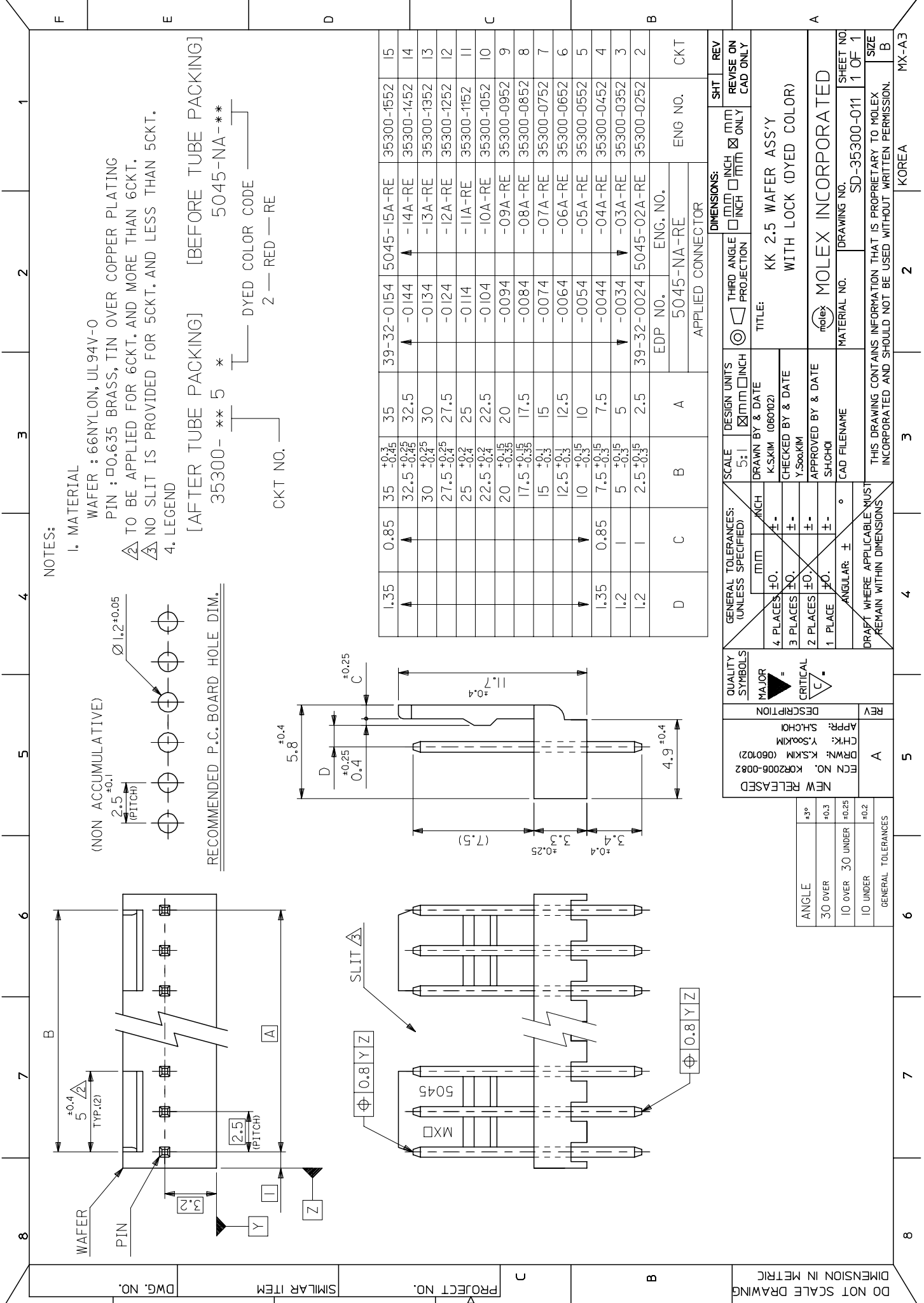
1. TUBE : STOPPER & VINYL LOCKING TYPE
2. THICKNESS : 0.6 <sup>+</sup>
3. LENGTH : 540mm

LEGEND

35300- \*\* 5 \*  
 COLOR : 0 --- NATURAL  
 2 --- RED  
 CKT (02, 03, 04, ....)

|      |            |           |                |          |
|------|------------|-----------|----------------|----------|
| 15   | 35300-155* | 35300155* | 5045-NA SERIES |          |
| 14   | -145*      | 35300145* |                |          |
| 13   | -135*      | 35300135* |                |          |
| 12   | -125*      | 35300125* |                |          |
| 11   | -115*      | 35300115* |                |          |
| 10   | -105*      | 35300105* |                |          |
| 9    | -095*      | 35300095* |                |          |
| 8    | -085*      | 35300085* |                |          |
| 7    | -075*      | 35300075* |                |          |
| 6    | -065*      | 35300065* |                |          |
| 5    | -055*      | 35300055* |                |          |
| 4    | -045*      | 35300045* |                |          |
| 3    | -035*      | 35300035* |                |          |
| 2    | 35300-025* | 35300025* |                | USED ON. |
| CKTS | ENG NO.    | MAT'L NO. |                |          |

|   |   |   |                                      |   |  |  |  |                             |
|---|---|---|--------------------------------------|---|--|--|--|-----------------------------|
| NEW RELEASED<br>EC NO. KOR2004-0124<br>DRWN: K.S.KIM (040324)<br>CHK: J.K.OH<br>APPR: C.W.LEE | QUALITY SYMBOLS<br>MAJOR =<br>CRITICAL =  | GENERAL TOLERANCES:<br>(UNLESS SPECIFIED) |                                      | SCALE NONE                                    | DESIGN UNITS<br><input checked="" type="checkbox"/> mm <input type="checkbox"/> INCH | <input type="checkbox"/> THIRD ANGLE<br><input checked="" type="checkbox"/> PROJECTION | DIMENSIONS:<br><input type="checkbox"/> mm <input type="checkbox"/> INCH<br><input type="checkbox"/> mm ONLY | SHT<br>REV                  |
|   |   | 4 PLACES ±0.    ±.                        | DRAWN BY & DATE<br>H.S.SHIN (910120) | TITLE:<br>TUBE PACKAGED<br>FOR 5045-NA SERIES |  |  |  |                             |
|   |   | 3 PLACES ±0.    ±.                        | CHECKED BY & DATE<br>J.K.OH          |   |  |  |  |                             |
|   |   | 2 PLACES ±0.    ±.                        | APPROVED BY & DATE<br>C.W.LEE        | MOLEX INCORPORATED                            |  |  |  |                             |
|   |   | 1 PLACE ±0.    ±.                         | CAD FILENAME<br>SD-35300-001.dgn     |   |  |  | MATERIAL NO.<br>SEE TABLE  | DRAWING NO.<br>SD-35300-001 |
| DRAFT WHERE APPLICABLE MUST<br>REMAIN WITHIN DIMENSIONS                                       | THIS DRAWING CONTAINS INFORMATION THAT IS PROPRIETARY TO MOLEX<br>INCORPORATED AND SHOULD NOT BE USED WITHOUT WRITTEN PERMISSION. |   |                                      |   |  | SIZE<br>A  |  |                             |



NOTES:

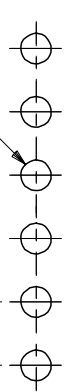
1. MATERIAL

- WAFER : 66NYLON, UL94V-0
- PIN :  $\phi 0.635$  BRASS, TIN OVER COPPER PLATING
- $\triangle$  TO BE APPLIED FOR 6CKT. AND MORE THAN 6CKT.
- $\triangle$  NO SLIT IS PROVIDED FOR 5CKT. AND LESS THAN 5CKT.

4. LEGEND

[AFTER TUBE PACKING] [BEFORE TUBE PACKING]  
 35300- \*\* 5 \* 5045-NA-\*\*  
 CKT NO. DYED COLOR CODE  
 2 — RED — RE

RECOMMENDED P.C. BOARD HOLE DIM.



| PROJECT NO. | SMILAR ITEM | DWG. NO. | SCALE | DESIGN UNITS | THIRD ANGLE PROJECTION | TITLE                                     | ENG. NO.   | REV |
|-------------|-------------|----------|-------|--------------|------------------------|---|------------|-----|
| C           |             |          | 5:1   | MM/INCH      | MM/INCH                | KK 2.5 WAFER ASS'Y WITH LOCK (DYED COLOR) | 5045-NA-RE | 15  |
| B           |             |          | 5:1   | MM/INCH      | MM/INCH                | KK 2.5 WAFER ASS'Y WITH LOCK (DYED COLOR) | 5045-NA-RE | 14  |
|             |             |          | 5:1   | MM/INCH      | MM/INCH                | KK 2.5 WAFER ASS'Y WITH LOCK (DYED COLOR) | 5045-NA-RE | 13  |
|             |             |          | 5:1   | MM/INCH      | MM/INCH                | KK 2.5 WAFER ASS'Y WITH LOCK (DYED COLOR) | 5045-NA-RE | 12  |
|             |             |          | 5:1   | MM/INCH      | MM/INCH                | KK 2.5 WAFER ASS'Y WITH LOCK (DYED COLOR) | 5045-NA-RE | 11  |
|             |             |          | 5:1   | MM/INCH      | MM/INCH                | KK 2.5 WAFER ASS'Y WITH LOCK (DYED COLOR) | 5045-NA-RE | 10  |
|             |             |          | 5:1   | MM/INCH      | MM/INCH                | KK 2.5 WAFER ASS'Y WITH LOCK (DYED COLOR) | 5045-NA-RE | 9   |
|             |             |          | 5:1   | MM/INCH      | MM/INCH                | KK 2.5 WAFER ASS'Y WITH LOCK (DYED COLOR) | 5045-NA-RE | 8   |
|             |             |          | 5:1   | MM/INCH      | MM/INCH                | KK 2.5 WAFER ASS'Y WITH LOCK (DYED COLOR) | 5045-NA-RE | 7   |
|             |             |          | 5:1   | MM/INCH      | MM/INCH                | KK 2.5 WAFER ASS'Y WITH LOCK (DYED COLOR) | 5045-NA-RE | 6   |
|             |             |          | 5:1   | MM/INCH      | MM/INCH                | KK 2.5 WAFER ASS'Y WITH LOCK (DYED COLOR) | 5045-NA-RE | 5   |
|             |             |          | 5:1   | MM/INCH      | MM/INCH                | KK 2.5 WAFER ASS'Y WITH LOCK (DYED COLOR) | 5045-NA-RE | 4   |
|             |             |          | 5:1   | MM/INCH      | MM/INCH                | KK 2.5 WAFER ASS'Y WITH LOCK (DYED COLOR) | 5045-NA-RE | 3   |
|             |             |          | 5:1   | MM/INCH      | MM/INCH                | KK 2.5 WAFER ASS'Y WITH LOCK (DYED COLOR) | 5045-NA-RE | 2   |
|             |             |          | 5:1   | MM/INCH      | MM/INCH                | KK 2.5 WAFER ASS'Y WITH LOCK (DYED COLOR) | 5045-NA-RE | 1   |

DO NOT SCALE DRAWING  
 DIMENSION IN METRIC

NEW RELEASED  
 DRWN: K.S.KIM (060102)  
 CTR: Y.SOOKIM  
 APPR: S.HOHI

DESCRIPTION

QUALITY SYMBOLS  
 MAJOR =  $\blacktriangle$   
 CRITICAL =  $\triangle$   
 =  $\nabla$

GENERAL TOLERANCES:  
 (UNLESS SPECIFIED)  
 4 PLACES  $\pm 0.1$   
 3 PLACES  $\pm 0.1$   
 2 PLACES  $\pm 0.1$   
 1 PLACE  $\pm 0.1$   
 ANGULAR:  $\pm 0.5$

GENERAL TOLERANCES  
 30 OVER  $\pm 0.3$   
 10 OVER 30 UNDER  $\pm 0.25$   
 10 UNDER  $\pm 0.2$

APPROVED BY & DATE  
 S.HOHI

CAD FILENAME

DRAWING NO. SD-35300-011

SHEET NO. 1 OF 1

SIZE B

INCORPORATED AND SHOULD NOT BE USED WITHOUT WRITTEN PERMISSION.

THIS DRAWING CONTAINS INFORMATION THAT IS PROPRIETARY TO MOLEX

MOLEX MOLEX INCORPORATED

APPLIED CONNECTOR

ENG. NO. CKT

KOREA

MX-A3