

PLEASE CHECK WWW.MOLEX.COM FOR LATEST PART INFORMATION

Part Number: **0008701043**
Status: **Active**
Description: Crimp Terminal 5394, AWG#22-#28, Reel

Documents:

[Drawing \(PDF\)](#) [RoHS Certificate of Compliance \(PDF\)](#)
[Product Specification PS-5395-001 \(PDF\)](#)

General

Product Family	Crimp Terminals
Series	5394
Crimp Quality Equipment	Yes
Product Name	Board-In

Physical

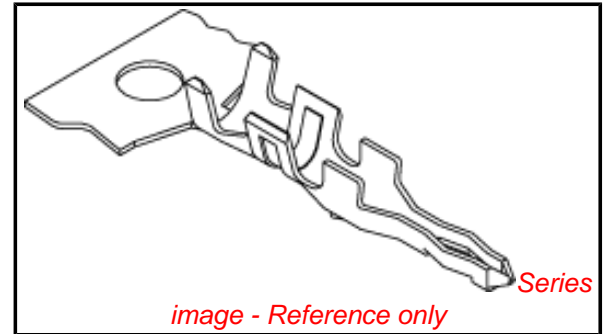
Gender	Male
Material - Metal	Brass
Material - Plating Mating	Tin
Material - Plating Termination	Tin
Packaging Type	Reel
Plating min: Mating (µin)	35
Plating min: Mating (µm)	0.88
Plating min: Termination (µin)	35
Plating min: Termination (µm)	0.88
Termination Interface: Style	Crimp or Compression
Wire Insulation Diameter	1.20-1.90mm (.047-.075")
Wire Size AWG	22, 24, 26, 28
Wire Size mm ²	N/A

Material Info

Old Part Number	5394T
-----------------	-------

Reference - Drawing Numbers

Product Specification	PS-5395-001
Sales Drawing	SD-5394*



EU RoHS

ELV and RoHS Compliant
REACH SVHC
Contains SVHC: No
Halogen-Free Status
Halogen-Free

China RoHS



Need more information on product environmental compliance?

Email productcompliance@molex.com
 For a multiple part number RoHS Certificate of Compliance, [click here](#)

Please visit the [Contact Us](#) section for any non-product compliance questions.

Search Parts in this Series

5394Series

Use With

5395 Board-In Housing

Application Tooling | FAQ

Tooling specifications and manuals are found by selecting the products below. Crimp Height Specifications are then contained in the Application Tooling Specification document.

Global

Description	Product #
Terminator Die	0011402071

Japan

Description	Product #
Applicator for M211A Bench Press, 22-28 AWG, for 5394 Crimp Terminal	0011260108

10 9 8 7 6 5 4 3 2 1

F

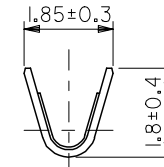
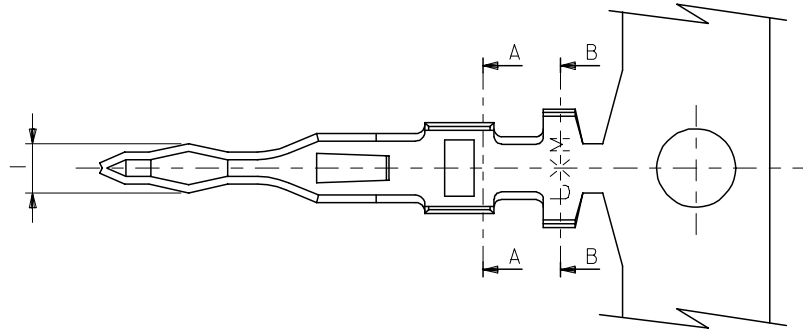
E

D

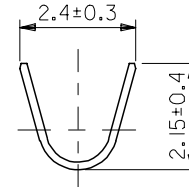
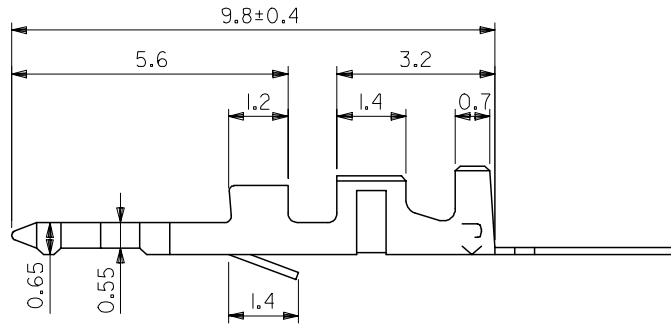
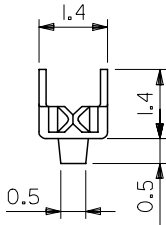
C

B

A



断面A-A
SECT. A-A



断面B-B
SECT. B-B

注)
NOTE.

1. 適合ハウジング: 5395-N
HOUSING:5395-N

08-70-1044	5394TL	バラ状 LOOSE
08-70-1043	5394T	連鎖状 CHAIN
EDP.NO.	ENG.NO.	形状 FORM

REVISED EC NO: J2005-0061 DRAWN: TANAKA 2005/02/03 CHKD: NUKITA 2005/02/04 APPR: NUKITA 2005/02/10	GENERAL TOLERANCES (UNLESS SPECIFIED)		DIMENSION STYLE MM ONLY		SCALE 10:1	DESIGN UNITS METRIC	THIRD ANGLE PROJECTION	
	10 UNDER	±0.2	DRAWN BY KKOHAMA	DATE 2000/03/28	TITLE BOARD IN CONN. MINI. CRIMP PIN			
	10 OVER 30 UNDER	±0.25	CHECKED BY TYAMAGUC	DATE 2000/03/30				
	30 OVER	±0.3	APPROVED BY MFUKUSHI	DATE 2000/03/30	MOLEX INCORPORATED			
ANGULAR ±3 °		DRAFT WHERE APPLICABLE MUST REMAIN WITHIN DIMENSIONS		MATERIAL NO. SEE CHART		DOCUMENT NO. SD-5394*	SHEET NO. 1 OF 1	
SIZE A3 THIS DRAWING CONTAINS INFORMATION THAT IS PROPRIETARY TO MOLEX INCORPORATED AND SHOULD NOT BE USED WITHOUT WRITTEN PERMISSION								

MATERIAL
黄銅 (錫メッキ) t:0.15
PRE-TINNED BRASS t:0.15