

**PLEASE CHECK WWW.MOLEX.COM FOR LATEST PART INFORMATION**

**Part Number:** [0533240860](#)  
**Status:** **Active**  
**Description:** 2.00mm (.079") Pitch Mi II™ System Wire-to-Board Header, Single Row, Vertical, Lead-free, 8 Circuits

**Documents:**

[3D Model](#) [Product Specification PS-52484-021 \(PDF\)](#)  
[Drawing \(PDF\)](#) [RoHS Certificate of Compliance \(PDF\)](#)  
[Product Specification PS-51090-016 \(PDF\)](#)

**Agency Certification**

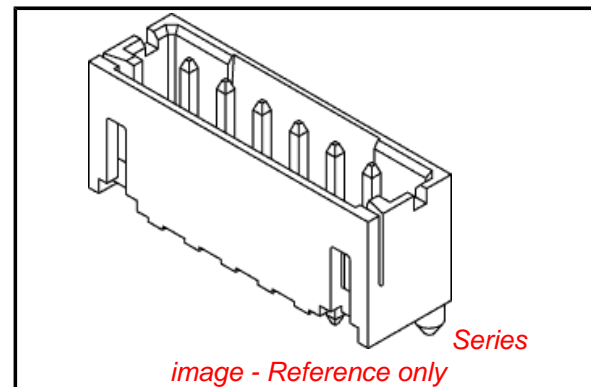
CSA LR19980  
 UL E29179

**General**

Product Family PCB Headers  
 Series [53324](#)  
 Application Wire-to-Board  
 Product Name Mi II™

**Physical**

Breakaway No  
 Circuits (Loaded) 8  
 Circuits (maximum) 8  
 Color - Resin Natural  
 Durability (mating cycles max) 30  
 First Mate / Last Break No  
 Flammability 94V-0  
 Glow-Wire Compliant No  
 Guide to Mating Part No  
 Keying to Mating Part None  
 Lock to Mating Part Yes  
 Material - Metal Brass  
 Material - Plating Mating Tin  
 Material - Plating Termination Tin  
 Material - Resin Nylon  
 Number of Rows 1  
 Orientation Vertical  
 PC Tail Length (in) 0.138 In  
 PC Tail Length (mm) 3.50 mm  
 PCB Locator Yes  
 PCB Retention Yes  
 PCB Thickness Recommended (in) 0.062 In  
 PCB Thickness Recommended (mm) 1.60 mm  
 Packaging Type Tray  
 Pitch - Mating Interface (in) 0.079 In  
 Pitch - Mating Interface (mm) 2.00 mm  
 Plating min: Mating (µin) 40  
 Plating min: Mating (µm) 1.00  
 Plating min: Termination (µin) 40  
 Plating min: Termination (µm) 1.00  
 Polarized to PCB Yes  
 Shrouded Fully  
 Stackable No  
 Surface Mount Compatible (SMC) No  
 Temperature Range - Operating -40°C to +105°C



**EU RoHS**

**ELV and RoHS Compliant**  
**REACH SVHC**  
 Not Reviewed  
**Halogen-Free Status**  
 Not Reviewed

**China RoHS**



**Need more information on product environmental compliance?**

Email [productcompliance@molex.com](mailto:productcompliance@molex.com)  
 For a multiple part number RoHS Certificate of Compliance, [click here](#)

Please visit the [Contact Us](#) section for any non-product compliance questions.

**Search Parts in this Series**

[53324Series](#)

**Mates With**

[52484](#) Wire-to-Board IDT Receptacle.,  
[51090](#) Crimp Terminal

Termination Interface: Style

Through Hole

**Electrical**

Current - Maximum per Contact

2A

Voltage - Maximum

125V

**Material Info**

**Reference - Drawing Numbers**

Product Specification

PS-51090-016, PS-52484-021, RPS-51090-001,  
RPS-51090-017, RPS-51090-022, RPS-52484-022,  
RPS-52484-025, RPS-52484-026, RPS-53324-001  
SD-53324-003

Sales Drawing

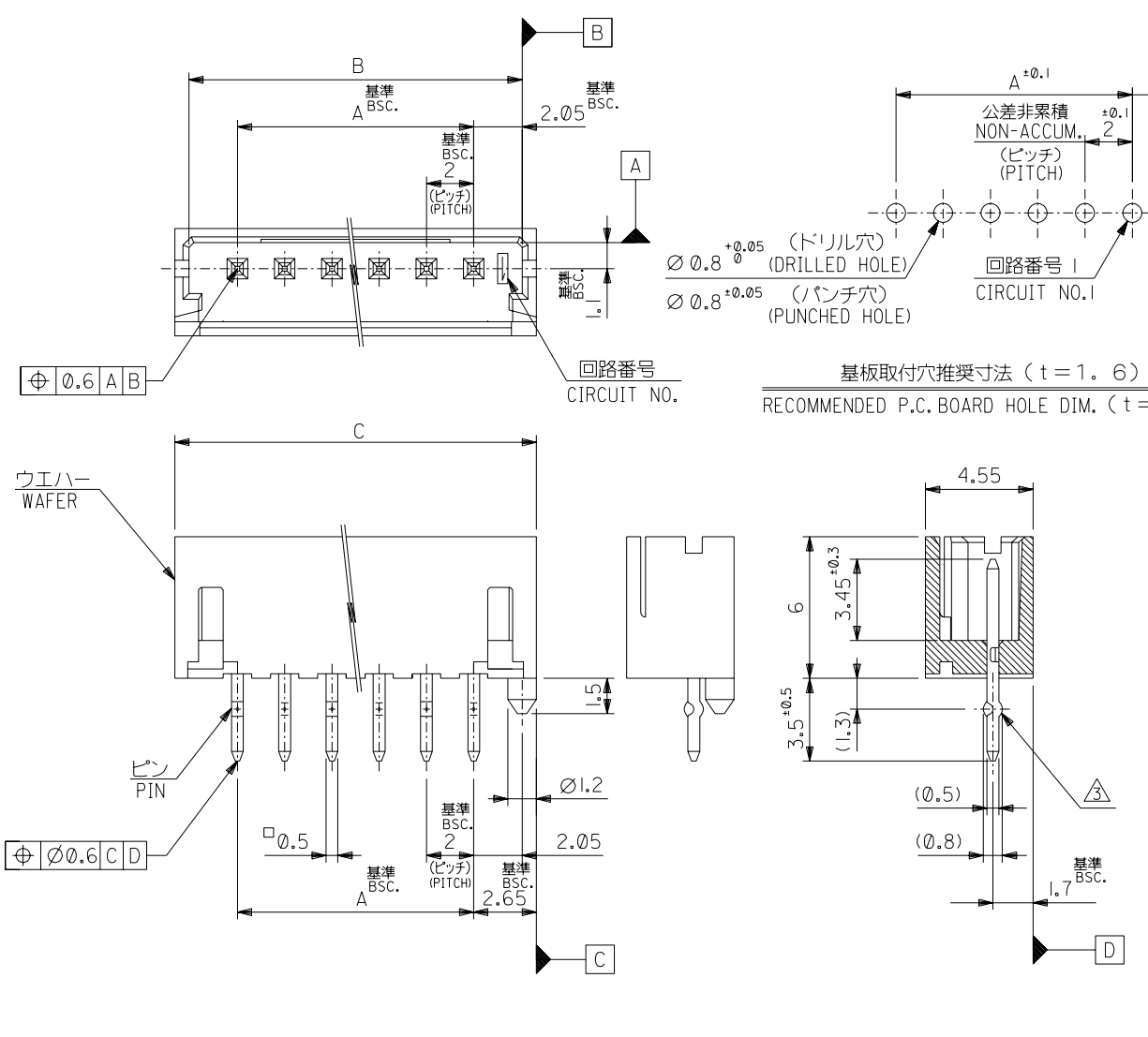
This document was generated on 04/16/2010

**PLEASE CHECK [WWW.MOLEX.COM](http://WWW.MOLEX.COM) FOR LATEST PART INFORMATION**

DWG. NO. SD-53324-003

DO NOT SCALE DRAWING

DO NOT SCALE DRAWING



注記 NOTES

1. 嵌合相手: 51090-\*\*\*00, 52484-\*\*\*1\*  
MATES WITH
  2. 材質 MATERIAL  
ウエハー: ガラス入り 66ナイロン  
UL94V-0 色: 表参照  
WAFER: GLASS FILL 66 NYLON  
UL94V-0, COLOR: SEE CHART  
ピン: 黄銅, スズメッキ  
PIN: BRASS, PRE-TINNED
- △ キンクは全ピンに交互に付加。2極はキンク無し。  
SET KINK ALTERNATELY TO ALL CIRCUITS.  
CIRCUIT 2 HAS NO KINK.
- △ 製品番号 MATERIAL NO.  
53324-\*\*\*6\*  
極数CIRCUIT SIZE 色COLOR
- |                              |   |
|------------------------------|---|
| ナチュラル (白)<br>NATURAL (WHITE) | 0 |
| 赤<br>RED                     | 2 |
| 黄<br>YELLOW                  | 3 |
| 青<br>BLUE                    | 4 |

無鉛  
LEAD FREE

15	33.3	32.1	28	53324-156*	53324-***6*
14	31.3	30.1	26	-146*	
13	29.3	28.1	24	-136*	
12	27.3	26.1	22	-126*	
11	25.3	24.1	20	-116*	
10	23.3	22.1	18	-106*	
9	21.3	20.1	16	-096*	
8	19.3	18.1	14	-086*	
7	17.3	16.1	12	-076*	
6	15.3	14.1	10	-066*	
5	13.3	12.1	8	-056*	
4	11.3	10.1	6	-046*	
3	9.3	8.1	4	-036*	
2	7.3	6.1	2	53324-026*	
極数 CKT.	C	B	A	△ MATERIAL NO.	

EC NO. DRWN: CHK: APPR:	EC NO. DRWN: CHK: APPR:	EC NO. DRWN: CHK: APPR:	EC NO. DRWN: CHK: APPR:	ECNNO-J2003-2361 DRWN: A.IDA '03/03/13 CHK: J.MIYAZAWA '03/03/13 APPR: YO.ITO '03/03/13	RELEASED	MATERIAL 材料 #	FINISH 仕上げ #	WIRE RANGE 適用線径範囲 #	INS. RANGE 被覆外径 #	GENERAL TOLERANCES: (UNLESS SPECIFIED) 一般公差 10 UNDER 未満 ±0.2 10 OVER 以上 30 UNDER 未満 ±0.25 30 OVER 以上 ±0.3 ANGLE 角度 ±3°	SCALE 5-1 DESIGN UNITS <input checked="" type="checkbox"/> mm <input type="checkbox"/> INCH DRAWN BY & DATE A. Ida '03/03/13 CHECKED BY & DATE J. Miyazawa '03/03/13 APPROVED BY & DATE Y. Ito '03/03/13	THIRD ANGLE PROJECTION DIMENSIONS: <input type="checkbox"/> mm <input type="checkbox"/> INCH <input checked="" type="checkbox"/> mm ONLY SHT REV REVISE ON CAD ONLY	TITLE: 2.0 WIRE TO BOARD CONN. WAFER ASS'Y (ST.) MOLEX MOLEX INCORPORATED	CAD FILENAME SD-53324-003.S01 MATERIAL NO. SEE CHART DRAWING NO. SD-53324-003 SHEET NO. 1 OF 1	THIS DRAWING CONTAINS INFORMATION THAT IS PROPRIETARY TO MOLEX INCORPORATED AND SHOULD NOT BE USED WITHOUT WRITTEN PERMISSION. SIZE B
----------------------------------	----------------------------------	----------------------------------	----------------------------------	--	----------	------------------	-----------------	------------------------	----------------------	--	---	--	--	---	--