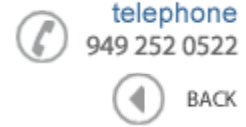




Data Sheet



Product Category: RF SAW Filter

Part Number	Package	Application	Last Modified
803-RF412.25M-A	3.8 x 3.8 SMD	CDMA450 Tx	Jan. 01, 2007

TYPE :
CDMA450 (L-Band), RF-Tx SAW Filter



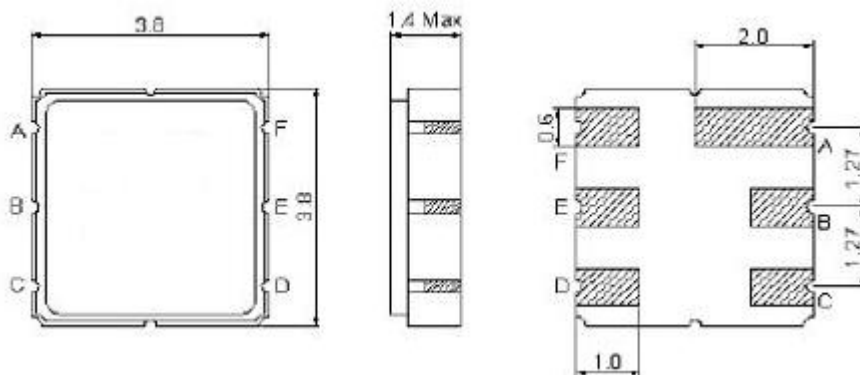
PART NUMBER :
803-RF412.25M-A

OPERATING CONDITIONS / ELECTRICAL CHARACTERISTICS

PARAMETERS	Condition	Minimum	Typical	Maximum	Units
Center Frequency (Fo)	-	-	412.25	-	MHz
Maximum Insertion Loss	410.0 ~ 414.5 MHz	-	2.5	3.2	dB
Stop Band Attenuation:	0.3 ~ 400.0 MHz	23	26	-	dB
	420.0 ~ 424.5 MHz	30	48	-	
	424.5 ~ 1700.0MHz	20	27	-	
	1700.0~ 2000.0 MHz	15	18	-	
Source Impedance (single ended)*	-	-	50	-	ohm
Load Impedance (single ended)*	-	-	50	-	ohm
VSWR	410.0 ~ 414.5 MHz	-	1.3	2.0	-
Maximum Input Power	-	-	-	30	dBm
Operating Temperature	-	-30	-	+80	°C

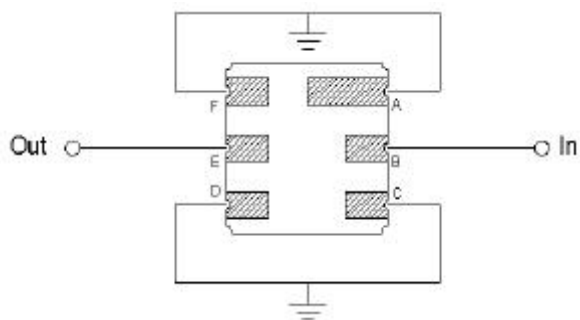
* No Matching Network

PACKAGE OUTLINE (mm)



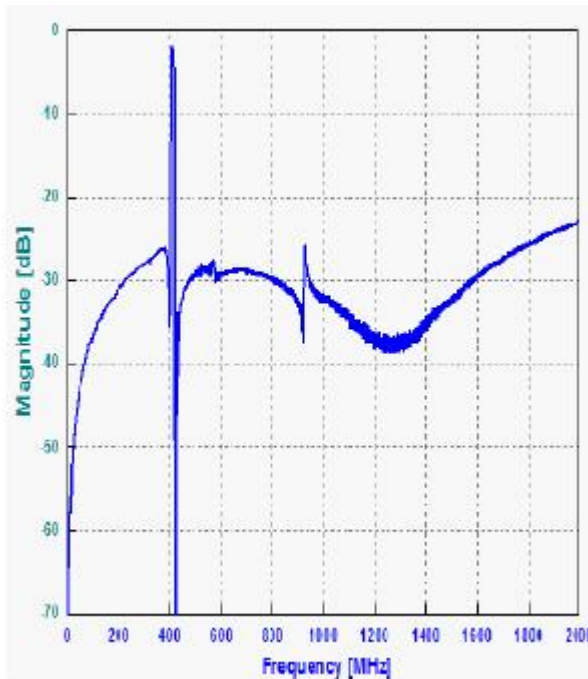
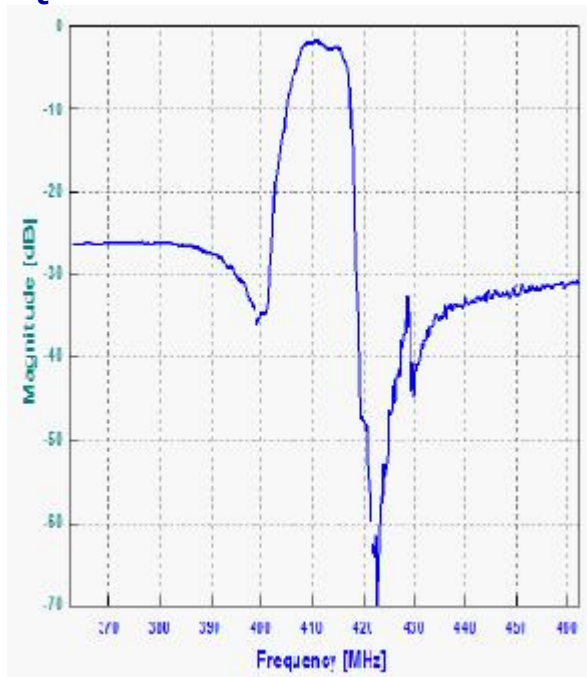
PIN LAYOUT	
A	Ground
B	In
C	Ground
D	Ground
E	Out
F	Ground

TEST FIXTURE

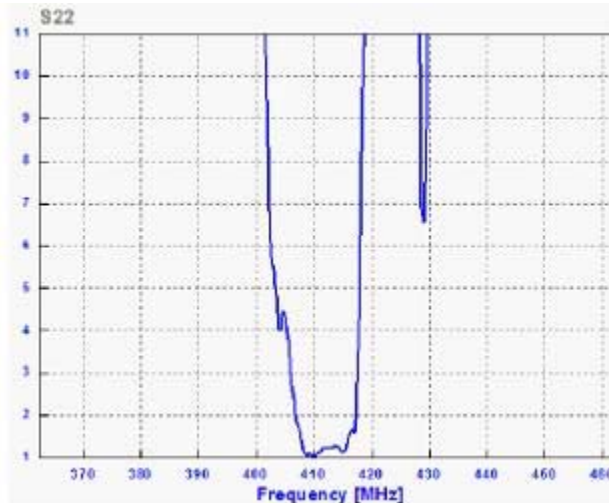
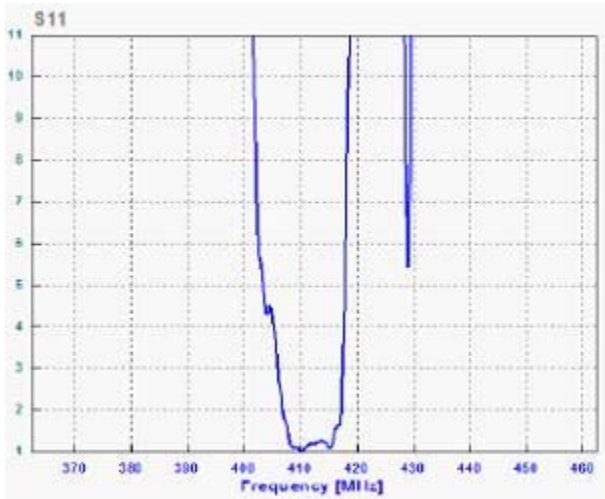


Source/ Load Impedance = 50 ohms

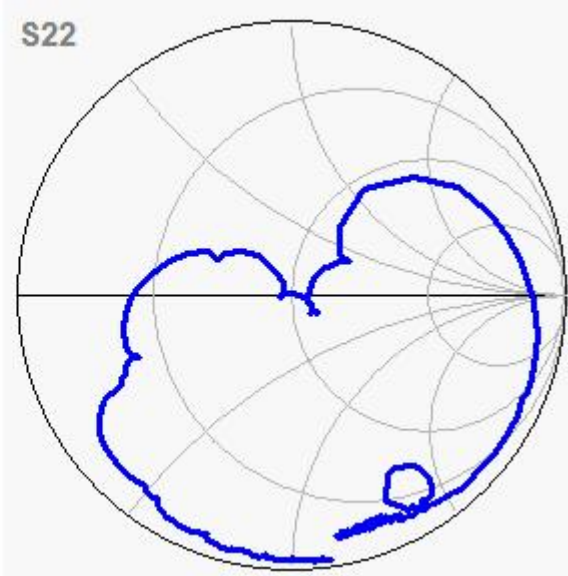
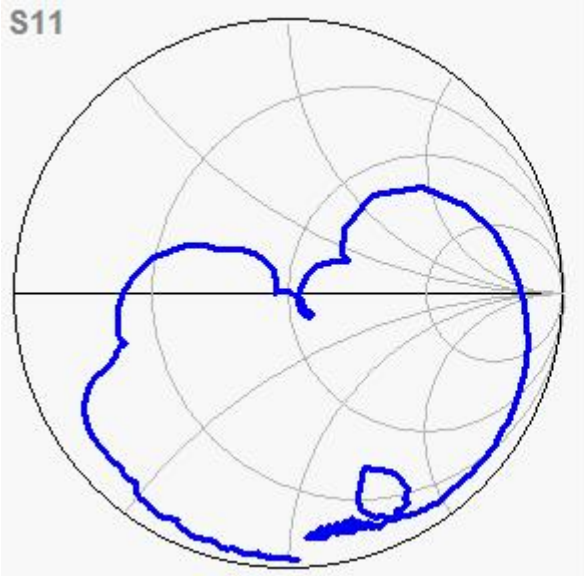
FREQUENCY RESPONSE



VSWR



SMITH CHART



Oscilent Corporation - CALL **949.252.0522**
18195 East McDermott Street . Building D . Irvine . CA 92614 . USA
Fax: 949.252.0599 . E-Mail: Sales@Oscilent.com

Part No.: 803-RF412.25M-A