

PLEASE CHECK WWW.MOLEX.COM FOR LATEST PART INFORMATION

Part Number: [0357504810](#)
Status: **Active**
Description: Ring Tongue Terminal for 14-18 AWG (0.75~2.08mm²), Stud Size 8 M4, Tin Plating

Documents:

[Drawing \(PDF\)](#) [RoHS Certificate of Compliance \(PDF\)](#)
[Product Specification PS-35750-0300 \(PDF\)](#)

General

Product Family	Ring and Spade Terminals
Series	35750
Crimp Quality Equipment	Yes
Mil-Spec	N/A
Product Name	N/A
Type	Ring

Physical

Barrel Type	Open
Insulation	None
Material - Plating Mating	Tin
Packaging Type	Reel
Plating min: Mating (µin)	40
Plating min: Mating (µm)	1
Plating min: Termination (µin)	40
Plating min: Termination (µm)	1
Stud Size	8 (M4)
Temperature Range - Operating	-40°C to +105°C
Termination Interface: Style	Crimp or Compression
Wire Insulation Diameter	3.20mm (.126") max.
Wire Size AWG	14, 16, 18
Wire Size mm ²	0.75 - 2.08

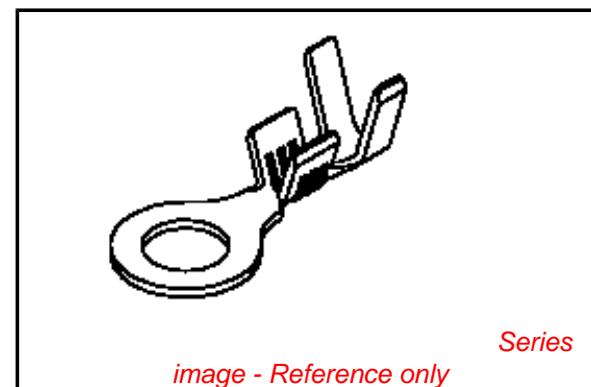
Electrical

Voltage - Maximum	300V AC
-------------------	---------

Material Info

Reference - Drawing Numbers

Product Specification	PS-35750-0300
Sales Drawing	SD-35750-480



EU RoHS

**ELV and RoHS
Compliant**
**REACH SVHC
Contains SVHC: No**
**Halogen-Free
Status**

China RoHS



**Need more information on product
environmental compliance?**

Email productcompliance@molex.com
 For a multiple part number RoHS Certificate of Compliance, [click here](#)

Please visit the [Contact Us](#) section for any non-product compliance questions.

Search Parts in this Series

[35750Series](#)

Application Tooling | [FAQ](#)

Tooling specifications and manuals are found by selecting the products below. Crimp Height Specifications are then contained in the Application Tooling Specification document.

Japan

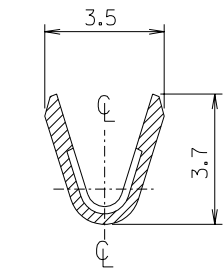
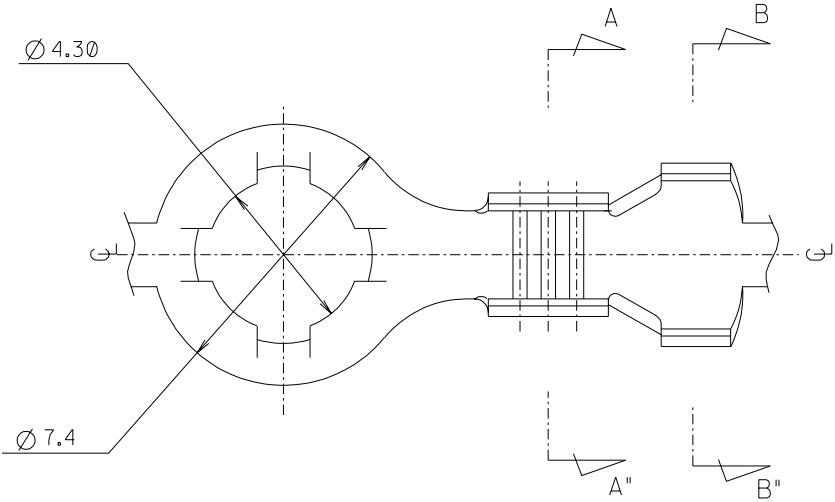
Description	Product #
End-Feed Applicator	0573793100

DO NOT SCALE DRAWING
DIMENSION IN METRIC

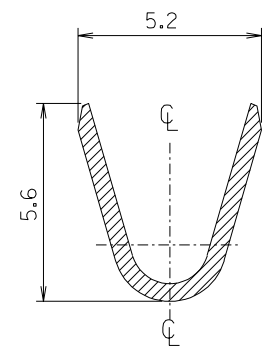
PROJECT NO.

SIMILAR ITEM

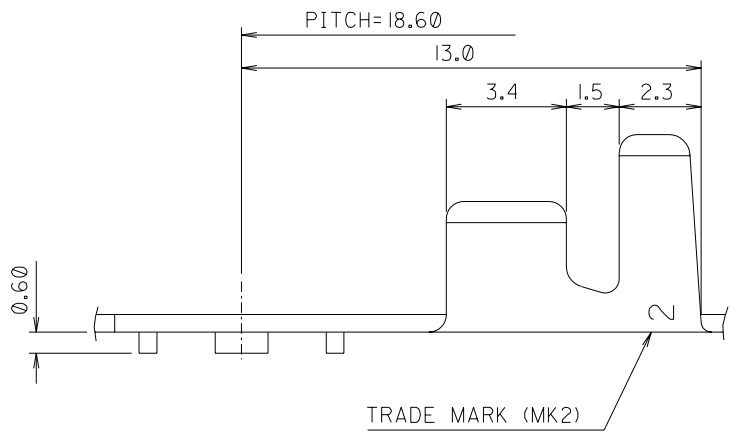
DWG. NO.
SD-35750-480



SECTION:A-A"



SECTION:B-B"



NOTES

1. MATERIAL: BRASS 0.5 THK'
2. FINISH: 35750-4800:UNPLATED
35750-4810: PRE-TIN PLATING
3. RECOMMENDED LENGTH OF WIRE STRIP IS 4.8-5.4

REVISED EC NO. KOR2002-0146 DRWN: C.B.CHIN 02/06/04 CHK: W.Y.YANG APPR: C.W.LEE	DESCRIPTION	QUALITY SYMBOLS	GENERAL TOLERANCES: (UNLESS SPECIFIED)	SCALE 7:1	DESIGN UNITS <input checked="" type="checkbox"/> mm <input type="checkbox"/> INCH	<input checked="" type="checkbox"/> THIRD ANGLE <input type="checkbox"/> PROJECTION	DIMENSIONS: <input type="checkbox"/> mm <input type="checkbox"/> INCH <input checked="" type="checkbox"/> mm ONLY	SHT	REV
		MAJOR =	mm	INCH	DRAWN BY & DATE W.Y.YANG 93/10/12	TITLE: Ø4.3 RING TERMINAL(TOOTH TYPE)			
C	REV	CRITICAL =	4 PLACES	±0.	±.	CHECKED BY & DATE B.K.CHOI 93/10/12	MATERIAL NO. SEE NOTES	DRAWING NO. SD-35750-480	SHEET NO. 1 OF 1
		3 PLACES	±0.	±.	APPROVED BY & DATE C.W.LEE 93/10/12				
		2 PLACES	±0.	±.	ANGULAR: ±0.15 °	THIS DRAWING CONTAINS INFORMATION THAT IS PROPRIETARY TO MOLEX INCORPORATED AND SHOULD NOT BE USED WITHOUT WRITTEN PERMISSION.	SIZE B		
		1 PLACE	±0.20	±.	DRAFT WHERE APPLICABLE MUST REMAIN WITHIN DIMENSIONS				