

PLEASE CHECK WWW.MOLEX.COM FOR LATEST PART INFORMATION

Part Number: **0587210010**
Status: **Active**
Description: HMC™ Rectangular Industrial Hood Bracket, Multi-Module Type, 48-72 Circuits, Type A Polarization

Documents:

3D Model	Product Specification PS-58719-006 (PDF)
Drawing (PDF)	RoHS Certificate of Compliance (PDF)
Product Specification PS-58719-005 (PDF)	

Agency Certification

TUV R72081037

General

Product Family	I/O Connectors
Series	58721
Application	Panel-Mount
Component Type	Hood Bracket
Product Name	HMC™
Type	N/A

Physical

Circuits (Loaded)	48
Circuits (maximum)	48
Lock to Mating Part	Yes
Material - Plating Mating	n/a
Orientation	Vertical
Packaging Type	Bag
Panel Mount	N/A
Pitch - Mating Interface (in)	0.000 In
Pitch - Mating Interface (mm)	0.00 mm
Pitch - Term. Interface (in)	0.000 In
Pitch - Term. Interface (mm)	0.00 mm
Polarized to Mating Part	Yes
Temperature Range - Operating	-55°C to +125°C
Termination Interface: Style	N/A
Waterproof / Dustproof	Yes
Waterproof / Dustproof Type	IP65

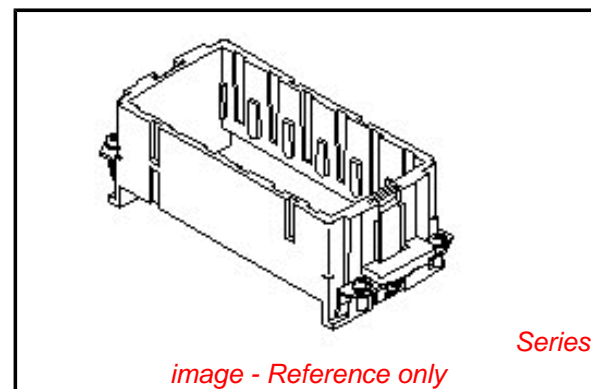
Electrical

Current - Maximum per Contact	12A, 20A
Voltage - Maximum	250V AC

Material Info

Reference - Drawing Numbers

Product Specification	PS-58719-005, PS-58719-006, RPS-58719-003, RPS-58719-004, RPS-58719-006, RPS-58719-007, RPS-58719-008
Sales Drawing	SD-58721-002



EU RoHS

ELV and RoHS Compliant
REACH SVHC
 Not Reviewed
Halogen-Free Status
 Not Reviewed

China RoHS



Need more information on product environmental compliance?

Email productcompliance@molex.com
 For a multiple part number RoHS Certificate of Compliance, [click here](#)

Please visit the [Contact Us](#) section for any non-product compliance questions.

Search Parts in this Series

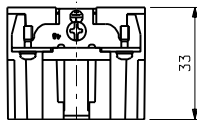
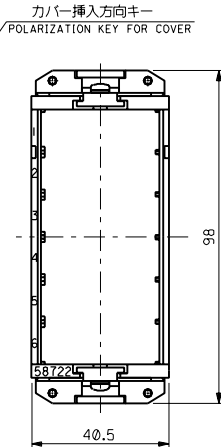
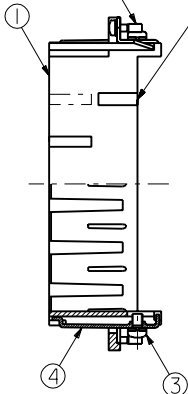
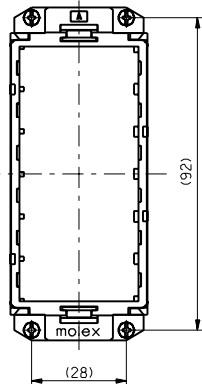
[58721Series](#)

Mates With

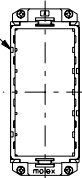
[58719-0010](#) panel-mount bracket

Use With

[51194](#) housing, [51195](#) housing, [58723-0010](#) hood, [51203](#) housing, [51204](#) housing



誤嵌合防止キー
MIS-ENGAGEMENT
PREVENTION KEY



TYPE A
58721-0010

誤嵌合防止キー
MIS-ENGAGEMENT
PREVENTION KEY



TYPE B
58721-0020

カバー挿入方向キー
POLARIZATION KEY FOR COVER

部番 NO.	部品名 PART NAME	数量 QTY.	材質 MATERIAL	記事 ARTICLE
①	プラグシェル PLUG SHELL	1	アルミニウム合金 ALUMINUM ALLOY	—
②	M2.5×8 パナ座金付ねじ M2.5X8 SCREW	4	鋼 STEEL	Ni ヌッキ NI PLATING
③	M3×5 パナ座金付ねじ M3X5 SCREW	2	鋼 STEEL	Ni ヌッキ NI PLATING
④	グラウンドターミナル GROUND TERMINAL	2	黄銅 BRASS	Ni ヌッキ NI PLATING

注記:
NOTES:

1. 適用ハウジングとターミナル
APPLICATION HOUSING AND TERMINAL

	適用ハウジング APPLICATION HOUSING	ターミナル TERMINAL
ピンハウジング PIN HOUSING	51194-0800	50638-9*49 Au PLATING
ソケットハウジング SOCKET HOUSING	51195-0800	59320-9*90 Au PLATING
ピンハウジング PIN HOUSING	51203-1200	50637-0*49 Au PLATING
ソケットハウジング SOCKET HOUSING	51204-1200	59319-0*90 Au PLATING
		5558-GS* Au PLATING
		5556GS** Au PLATING

2. M3ねじ推奨締付トルク: 5~6kaf.cm
M3 SCREW RECOMMENDATION TIGHTENING TORQUE.

EC NO. DRAWN CHKD. APPR.	EC NO. DRAWN CHKD. APPR.	EC NO. JD91218 '98/03/08 DRAWN: S,AKIYAMA CHKD: Y,IITO APPR: H,IKE-SUGI	EC NO. JD90894 '98/02/23 DRAWN: Y,ITSUKA CHKD: S,AKIYAMA/Y,IITO APPR: H,IKE-SUGI	RELEASED EC NO. JD90402 '98/08/21 DRAWN: S,AKIYAMA CHKD: Y,IITO APPR: H,IKE-SUGI	MATERIAL 材料
		REVISED	REVISED		—
					—
					—
					—
					—
					—

GENERAL TOLERANCES: (UNLESS SPECIFIED) 一般公差	SCALE 1:1	DESIGN UNITS mm □ mm □ INCH	THIRD ANGLE PROJECTION <input checked="" type="checkbox"/> mm <input type="checkbox"/> INCH	DIMENSIONS: <input type="checkbox"/> mm <input type="checkbox"/> INCH	SHT REV
10 UNDER 未満	+0.2	DRAWN BY & DATE S. Akiyama '98/09/14	REVISE ON CAD ONLY		
10 OVER 30 UNDER 以上 未満	+0.25	CHECKED BY & DATE Y.Ito '98/09/21			
30 OVER 以上	+0.3	APPROVED BY & DATE Y.Ito '98/09/21			
FINISH 仕上げ		CAD FILE NAME 58721002.S01			
WIRE RANGE 適用電線範囲		MATERIAL NO. SEE CHART			
INS. RANGE 適用外径		DRAWING NO. SD-58721-002			
		ANGLE 角度			

TITLE: POWER CONN 48P PLUG SHELL ASS'Y	MATERIAL NO. 58721002.S01	DRAWING NO. SD-58721-002	SHEET NO. 1 OF 1
MOLEX INCORPORATED			

THIS DRAWING CONTAINS INFORMATION THAT IS PROPRIETARY TO MOLEX INCORPORATED AND SHOULD NOT BE USED WITHOUT WRITTEN PERMISSION.			
SIZE B			98721002.S01

B	58721-0020	58721-00*0
A	58721-0010	
TYPE	MATERIAL NO.	MODEL NO.