

# Monolithic crystal filter

## MQF21.4-0700/09



### Application

- 6 pol filter
- i.f.- filter
- use in mobile and stationary transceivers

### Limiting values

		Unit	Value
Nominal frequency	$f_0$	MHz	21.4
Insertion loss		dB	< 5.0
Pass band at 6.0dB		kHz	$\pm 3.5...4.5$
Ripple in pass band	$f_0 \pm 2$ kHz	dB	< 2.0
Stop band attenuation	$f_0 \pm 11$ kHz	dB	> 60
Alternate attenuation	$f_0 \pm 25...5000$ kHz	dB	> 80 except spurious
IP3	$f_0+12; f_0+24$ kHz	dBm	> 25

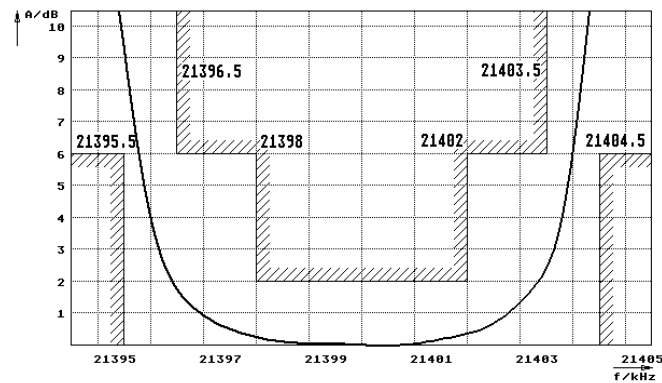
### Terminating impedance Z

R1  C1	Ohm/pF	50    0
R2  C2	Ohm/pF	50    0

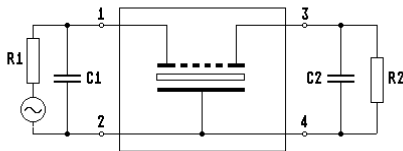
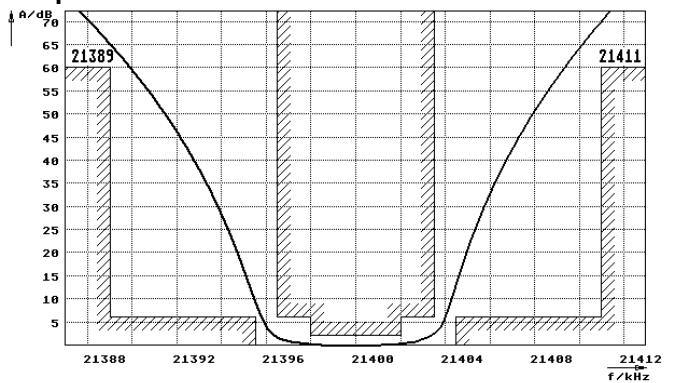
Operating temp. range	°C	+0... +70
-----------------------	----	-----------

### Characteristics MQF21.4-0700/09

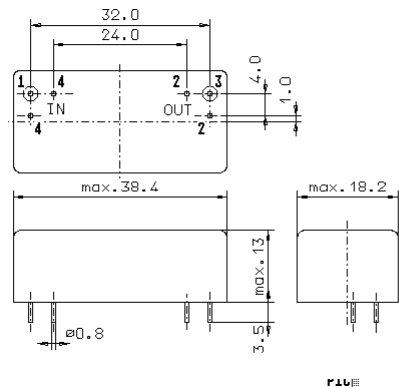
#### Pass band



#### Stop band



- Pin connections:
- 1 Input
  - 2 Ground-Input
  - 3 Output
  - 4 Ground-Output



GM17.1