

Monolithic crystal filter

MQF70.0-2000/01



Application

- 2 pol filter
- i.f.- filter
- use in mobile and stationary transceivers

Limiting values

| | | Unit | Value |
|-----------------------|-----------------------------|------|----------------------|
| Nominal frequency | f_0 | MHz | 70.0 |
| Insertion loss | | dB | < 2.0 |
| Pass band at 3.0dB | | kHz | $\pm > 10$ |
| Ripple in pass band | $f_0 \pm 7$ kHz | dB | < 1.0 |
| Stop band attenuation | $f_0 \pm 40$ kHz | dB | > 15 except spurious |
| Alternate attenuation | $f_0 - 200 \dots -1000$ kHz | dB | > 40 |
| | $f_0 + 500 \dots +1000$ kHz | dB | > 35 except spurious |

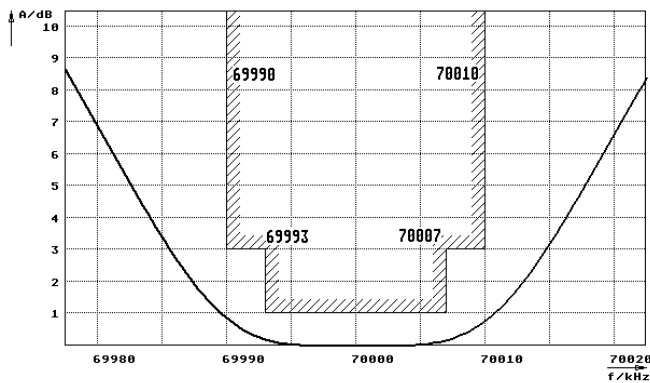
Terminating impedance Z

| | | |
|--------|--------|--------------|
| R1 C1 | Ohm/pF | 2500 -1.5 |
| R2 C2 | Ohm/pF | 2500 -1.5 |

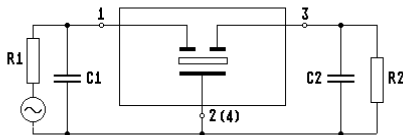
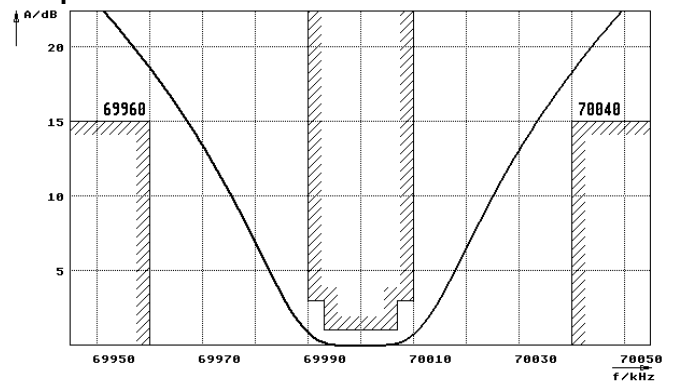
| | | |
|------------------------|----|--------------------|
| Operating temp. range | °C | -20... +70 |
| Storage temp. range | °C | -45... +85 |
| Environment conditions | | according to CF001 |

Characteristics MQF70.0-2000/01

Pass band



Stop band



- Pin connections:
- 1 Input
 - 2 Ground-Input
 - 3 Output
 - 4 Ground-Output

