



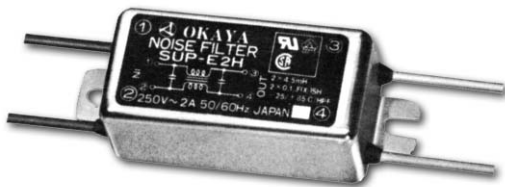
Features

- Leak current lower than 10 μ A(250V_{AC}, 60Hz), The best for medical equipment.
- High performance magnetics for puls absorption.
- High insertion loss characteristics.

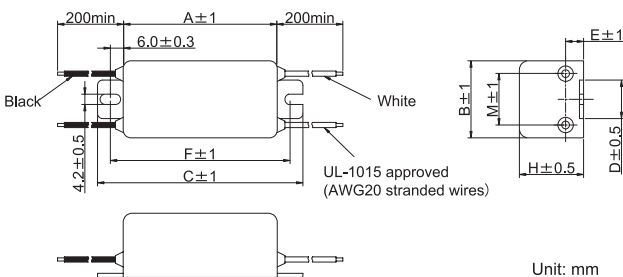
Applications

- Medical equipments, Printers, Copiers, Office appliances, Measuring devices and Control systems.

- SUP-E□H Series (Vinyl lead) (1~3A)

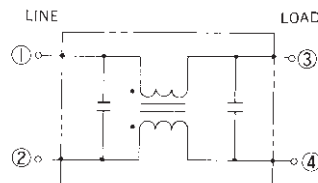


Dimension



Model number	A	B	C	D	E	F	H	M
SUP-E1H	60	30	80	15	7.0	70	25	20
SUP-E2H	60	30	80	15	7.0	70	25	20
SUP-E3H	60	40	80	20	7.0	70	25	25

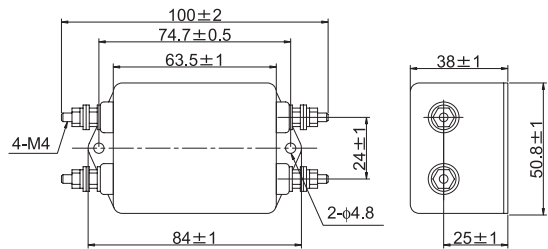
Circuit



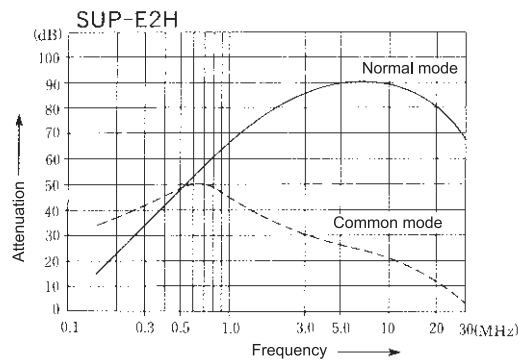
Safety Agency	Standard	File No.
UL	: UL-1283/UL-544	E78644
CSA	: C22.2, No.8-M1986	LR60681
SEMKO	: EN133200	SE/0142-13 SE/0142-14

UL-544 is medical and dental equipment rating.
The "ENCE" mark is a common European product certification mark based on testing to harmonised European safety standard.

- SUP-E□H Series (Screw) - 0 (Faston[®] terminal) (5~15A, 20A) - 2 (Solder terminal)



Static characteristics



Electrical Specifications

Safety Agency	Model Number	Rated Current (A)	Test Voltage	Insulation Resistance	Leakage Current (max)	Voltage Drop (max)	Temperature Rise (max)	Operating Temperature (°C)	Insertion losses	
									Normal Mode (MHz)	Common Mode (MHz)
	SUP-E1H	1	Line to Line 1100Vrms 50/60Hz 60sec Line to Ground 2240Vrms 50/60Hz 60sec	Line to Line 3000M Ω min Line to Ground 6000M Ω min (at 500V _{DC})	10 μ A (at 250Vrms 60Hz)	1.0Vrms	30deg	-25 ~ +55	0.7 ~ 30	-
	SUP-E2H	2							-	-
	SUP-E3H	3							-	-
	SUP-E5H (—)	5							-	-
	SUP-E10H (—)	10							0.8 ~ 20	-
	SUP-E15H (—)	15							1.0 ~ 30	-
	SUP-E20H (—)	20	1.5 ~ 30	-						

Rated Voltage **250VAC**

Guaranteed attenuation is more than 40dB.