

PLEASE CHECK WWW.MOLEX.COM FOR LATEST PART INFORMATION

Part Number: **0877921120**
Status: **Active**
Description: 2.00mm (.079") Pitch Board-to-Board Panel Detachable, PCB Header, Surface Mount, 20 Circuits, Gold (Au) Selective Plating, with Pick-and-Place Cap, Tube Packaging, Lead-free

Documents:

[Drawing \(PDF\)](#) [RoHS Certificate of Compliance \(PDF\)](#)
[Product Specification PS-87791-014 \(PDF\)](#)

General

Product Family	PCB Headers
Series	<u>87792</u>
Application	Board-to-Board
Comments	Panel Detachable
Product Name	N/A

Physical

Breakaway	No
Circuits (Loaded)	20
Circuits (maximum)	20
Durability (mating cycles max)	15,000
First Mate / Last Break	No
Glow-Wire Compliant	No
Guide to Mating Part	No
Keying to Mating Part	None
Lock to Mating Part	None
Mated Height (in)	0.309 In
Mated Height (mm)	7.85 mm
Material - Plating Mating	Gold
Material - Plating Termination	Tin
Number of Rows	2
Orientation	Vertical
PCB Locator	Yes
PCB Retention	None
PCB Thickness Recommended (in)	0.062 In
PCB Thickness Recommended (mm)	1.60 mm
Packaging Type	Tube
Pitch - Mating Interface (in)	0.079 In
Pitch - Mating Interface (mm)	2.00 mm
Polarized to Mating Part	No
Polarized to PCB	No
Robotic Placement	Pick and Place Cap
Shrouded	No
Stackable	No
Surface Mount Compatible (SMC)	N/A
Temperature Range - Operating	-25°C to +70°C
Termination Interface: Style	Surface Mount

Electrical

Current - Maximum per Contact	1A
Voltage - Maximum	125V

Material Info

Reference - Drawing Numbers

Product Specification	PS-87791-014, RPS-87791-005
-----------------------	-----------------------------



image - Reference only

Series

EU RoHS

**ELV and RoHS
Compliant**
REACH SVHC
 Not Reviewed
Halogen-Free
Status
 Not Reviewed

China RoHS



Need more information on product environmental compliance?

Email productcompliance@molex.com
 For a multiple part number RoHS Certificate of Compliance, [click here](#)

Please visit the [Contact Us](#) section for any non-product compliance questions.

Search Parts in this Series

[87792Series](#)

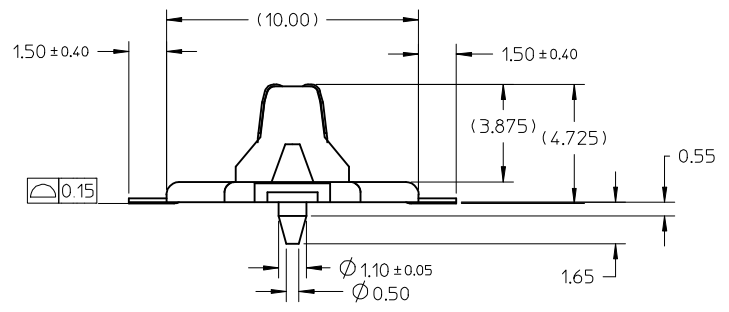
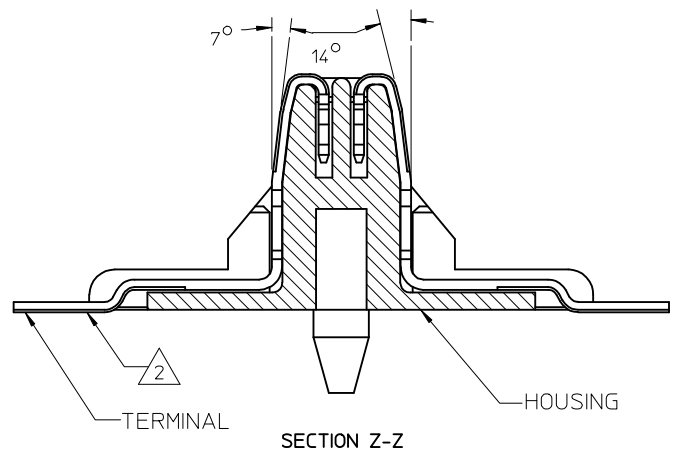
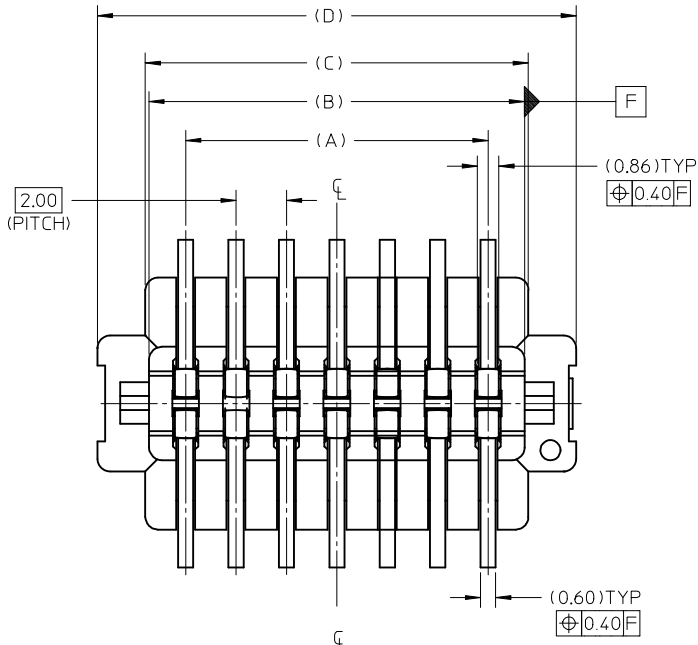
Mates With

[877910120](#) Board-to-Board Panel Detachable

This document was generated on 04/19/2010

PLEASE CHECK WWW.MOLEX.COM FOR LATEST PART INFORMATION

PLATING OPTION	ASSEMBLY P/N WITHOUT CAP IN TUBE	CKT SIZE	A	B	C	D	E
Au PLATING CONTACT AND TIN AT SOLDER TAIL	87792-0114	14	12.00	14.90	15.20	19.00	16.00
	87792-0116	16	14.00	16.90	17.20	21.00	18.00
	-	20	18.00	20.90	21.20	25.00	22.00



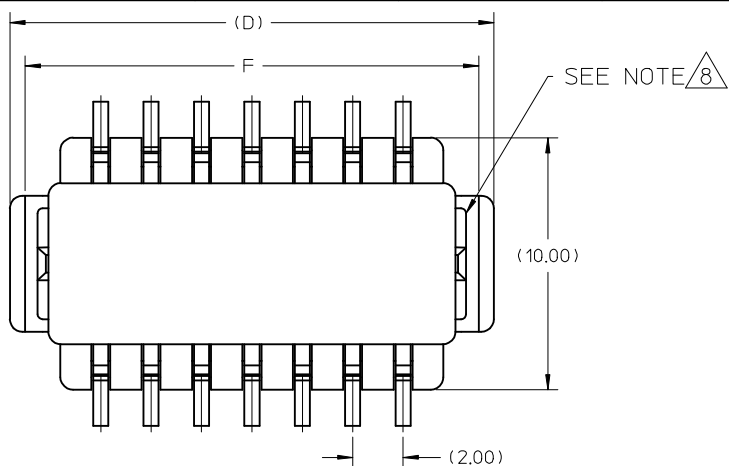
- NOTES:
- MATERIALS :
HOUSING : PA46, UL94V-0, COLOR : BLACK
CAP : PA46, UL94V-0, COLOR: BIEGE.
MAXIMUM REGRIND ALLOWABLE FOR CAP IS 100%.
TERMINAL : PHOSPHOR BRONZE.
EMBOSSD TAPE AND REEL : BLACK POLYSTYRENE CONDUCTIVE.
 - PLATING : SEE TABLE.
 - MATING PARTS REFERENCE : 87791-0*** or 87793-0***
 - REFER TO PRODUCT SPEC. PS-87791-014 FOR PERFORMANCE SPEC.
 - CONTACT AND SOLDER TAIL AREAS MUST BE FREE FROM CUTTING BURR.
 - NO SPECIFIC REQUIREMENT - OF APPEARANCE/ COSMETIC TO THE CAP.
 - CAP COVER RETENTION FORCE BEFORE RESISTANCE TO SOLDERING HEAT: 350gf MIN..
△ MAXIMUM ALLOWABLE OF FLASH AT SLOT IS 0.20MM. MAX.

REV	DESCRIPTION	DATE	APPROVED
1	UPDATE DIMENSION	2008/09/25	DRINKATSEE
2		2008/09/26	CHYKOSKANG
3		2008/09/26	APPR:MLONG

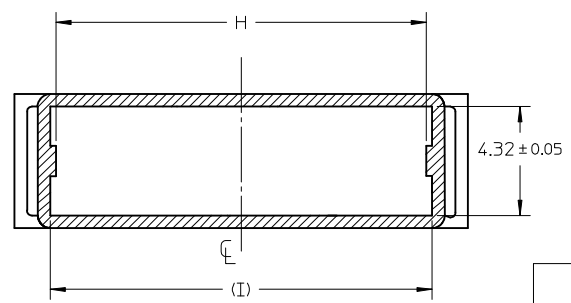
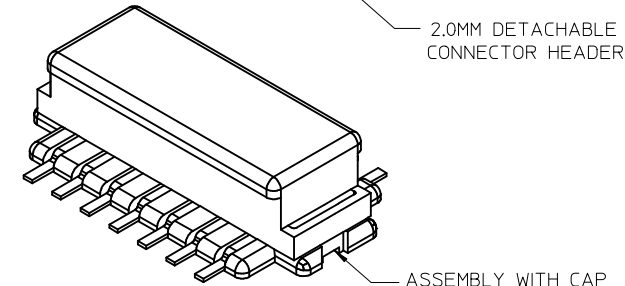
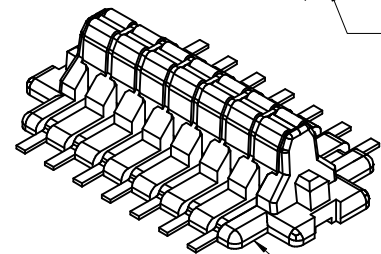
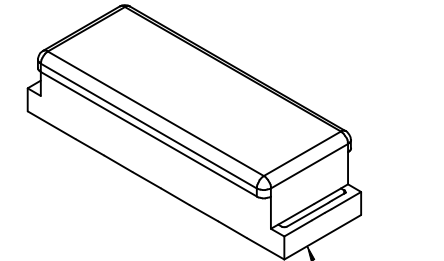
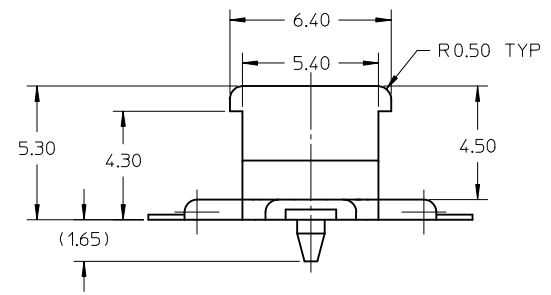
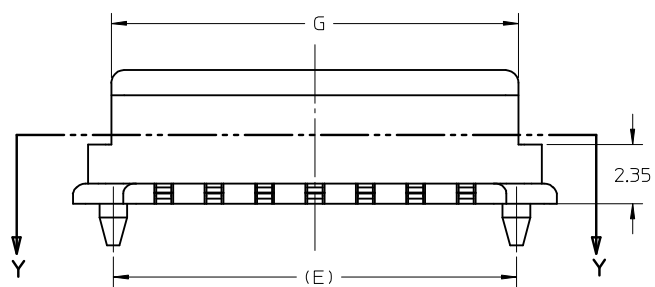
QUALITY SYMBOLS	GENERAL TOLERANCES (UNLESS SPECIFIED)
▽=0	mm INCH
∇=0	4 PLACES ± --- ± ---
	3 PLACES ± --- ± ---
	2 PLACES ± 0.25 ± ---
	1 PLACE ± --- ± ---
	ANGULAR ± 3 °
	DRAFT WHERE APPLICABLE MUST REMAIN WITHIN DIMENSIONS

DIMENSION STYLE		SCALE	DESIGN UNITS	THIRD ANGLE PROJECTION
MM ONLY		NTS	METRIC	⊙
DRAWN BY	DATE	TITLE		
CGOH	2004/08/05	2.0 B/B CONN. PLUG SMT (PANEL DETACHABLE TYPE) IN TUBE AND T&R		
CHECKED BY	DATE	MOLEX INCORPORATED		
PTL IM	2004/10/01			
APPROVED BY	DATE	DOCUMENT NO.		
SCLOW	2004/11/01	SD-87792-005		
MATERIAL NO.	SIZE	SHEET NO.		
	A3	1 OF 4		

10 9 8 7 6 5 4 3 2 1



PLATING OPTION	ASSEMBLY P/N WITH CAP IN TUBE	CAP P/N	CKT	F	G	H	I
Au PLATING AT CONTACT AREA AND TIN AT SOLDER TAIL	87792-114	87792-0003	14	18.20	16.15	14.70	15.15
	87792-116	87792-0004	16	20.20	18.15	16.70	17.15
	87792-120	87792-0005	20	24.20	22.15	20.70	21.15



SECTION Y-Y
(COVER ONLY)

REV	DESCRIPTION
U	UPDATE DIMENSION
	EC NO: S2008-0498
	DRWNATSEE 2008/09/25
	CHKD:SKANG 2008/09/26
	APPR:MLONG 2008/09/26

QUALITY SYMBOLS	VALUE
	=0
	=0

GENERAL TOLERANCES (UNLESS SPECIFIED)	
	mm INCH
4 PLACES	± --- ± ---
3 PLACES	± --- ± ---
2 PLACES	± 0.25 ± ---
1 PLACE	± --- ± ---
ANGULAR ± 3 °	

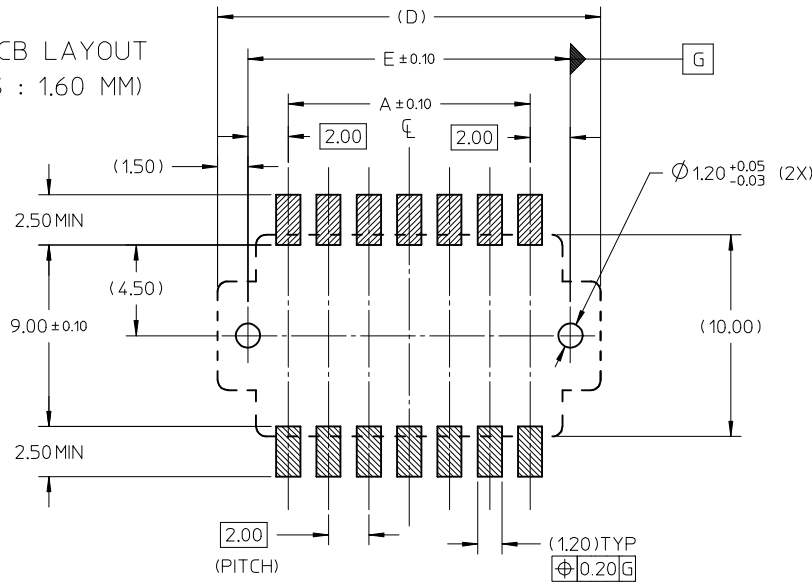
DRAFT WHERE APPLICABLE MUST REMAIN WITHIN DIMENSIONS

DIMENSION STYLE	
MM ONLY	
DRAWN BY	DATE
CGOH	2004/08/05
CHECKED BY	DATE
PTL IM	2004/10/01
APPROVED BY	DATE
SCLOW	2004/11/01
MATERIAL NO.	SEE TABLE

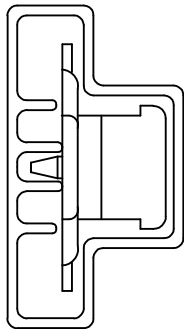
SCALE	DESIGN UNITS	THIRD ANGLE PROJECTION
NTS	METRIC	
TITLE		
2.0 B/B CONN. PLUG SMT (PANEL DETACHABLE TYPE) IN TUBE AND T&R		
MOLEX INCORPORATED		
MATERIAL NO.	DOCUMENT NO.	SHEET NO.
SEE TABLE	SD-87792-005	2 OF 4
THIS DRAWING CONTAINS INFORMATION THAT IS PROPRIETARY TO MOLEX INCORPORATED AND SHOULD NOT BE USED WITHOUT WRITTEN PERMISSION		

9 8 7 6 5 4 3 2 1

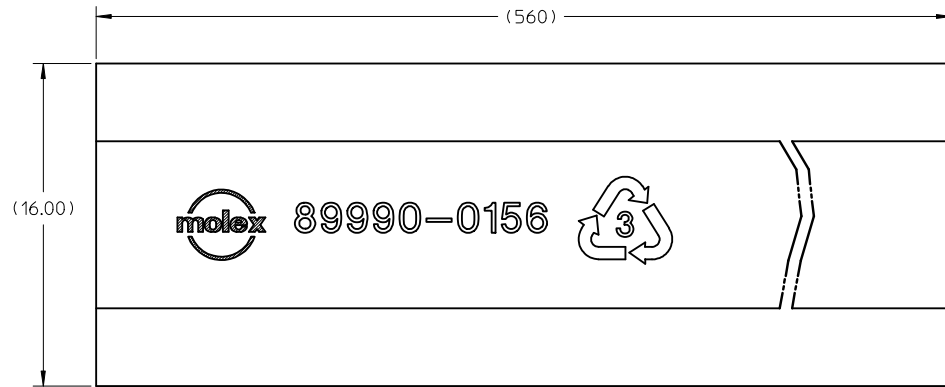
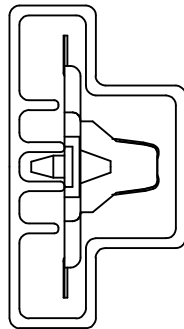
RECOMMENDED PCB LAYOUT
(PCB THICKNESS : 1.60 MM)



ASSEMBLY WITH CAP
IN TUBE



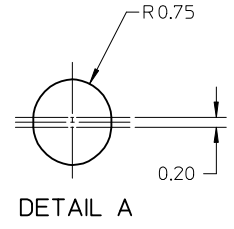
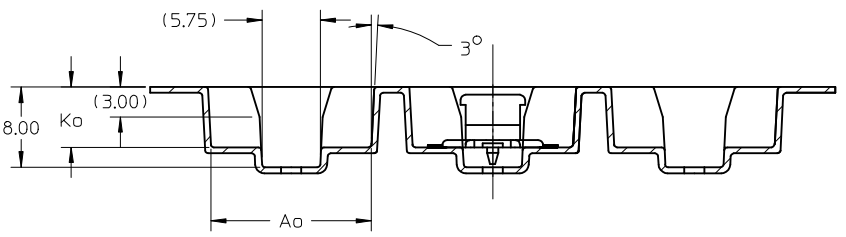
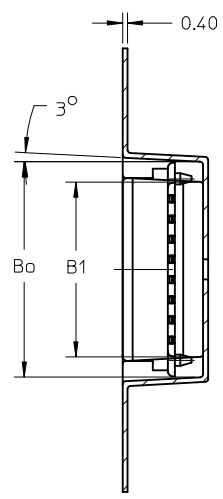
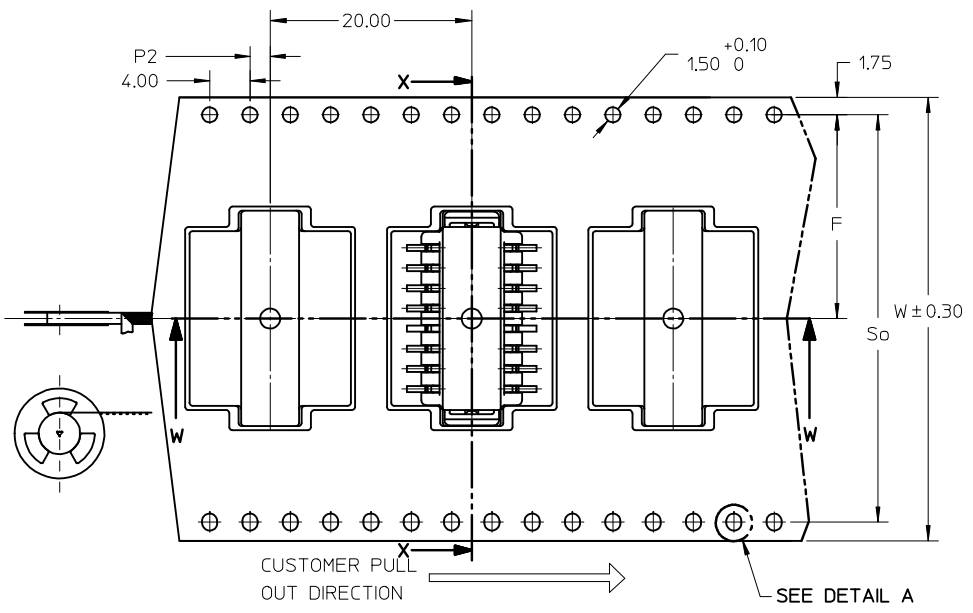
ASSEMBLY WITHOUT
CAP IN TUBE



UPDATE DIMENSION EC NO: S2008-0498 DR: WATSEE 2008/09/25 CHK: DSKANG 2008/09/26 APPR: MLONG 2008/09/26	QUALITY SYMBOLS ▽=0 ◻=0	GENERAL TOLERANCES (UNLESS SPECIFIED)		DIMENSION STYLE MM ONLY		SCALE NTS	DESIGN UNITS METRIC	THIRD ANGLE PROJECTION		
			mm	INCH	DRAWN BY	DATE	TITLE			
		4 PLACES	± ---	± ---	CGOH	2004/08/05	2.0 B/B CONN. PLUG SMT (PANEL DETACHABLE TYPE) IN TUBE AND T&R			
		3 PLACES	± ---	± ---	CHECKED BY	DATE	MOLEX INCORPORATED			
	± 0.25	± ---	PTL IM	2004/10/01	DOCUMENT NO.					
2 PLACES	± ---	± ---	APPROVED BY	DATE	SD-87792-005					
1 PLACE	± ---	± ---	SCLOW	2004/11/01	SHEET NO.					
ANGULAR ± 3 °		DRAFT WHERE APPLICABLE MUST REMAIN WITHIN DIMENSIONS		SEE TABLE		3 OF 4				
				MATERIAL NO.		THIS DRAWING CONTAINS INFORMATION THAT IS PROPRIETARY TO MOLEX INCORPORATED AND SHOULD NOT BE USED WITHOUT WRITTEN PERMISSION				
				SIZE A3						

TAPE AND REEL DETAIL

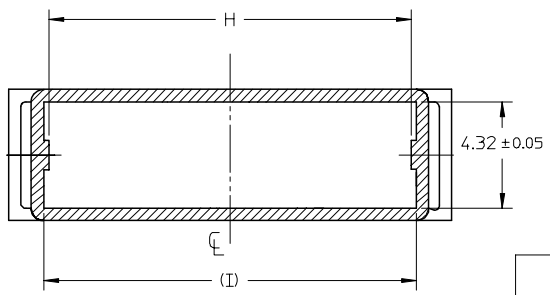
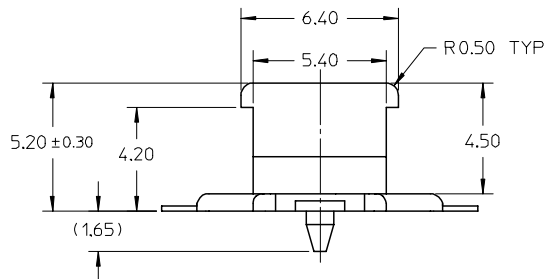
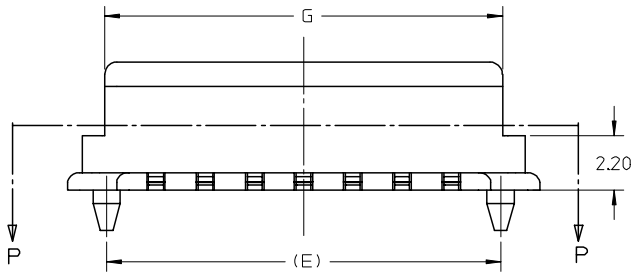
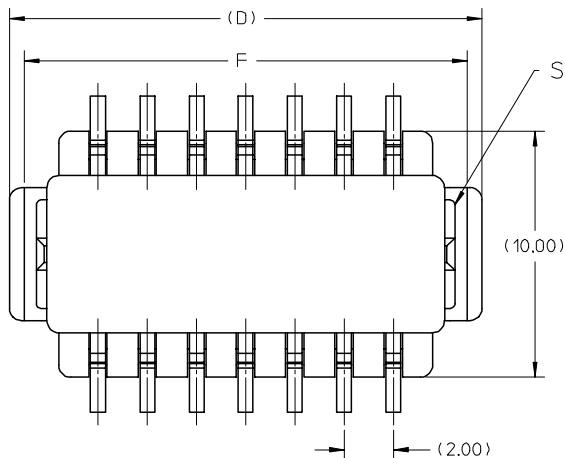
PLATING OPTION	ASSEMBLY P/N WITH CAP IN TAPE & REEL	CKT SIZE	F	Bo	B1	So	W	Ao	Ko	P2
Au PLATING AT CONTACT AREA AND TIN AT SOLDDERTAIL	87792-2116	16	20.20	21.35	17.35	40.40	44.00	15.90	6.00	2.00
	87792-2120	20		25.35	21.35					



NOTES:

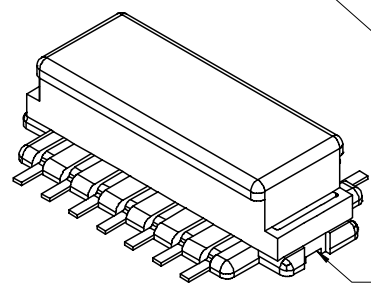
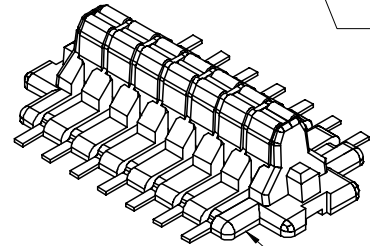
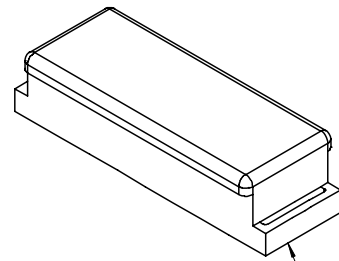
- LEADER AND TRAILER TAPE
- PEELING OFF FORCE OF THE TOP TAPE: 20 - 80gf. (PEELING DIRECTION AS SHOWN IN FOLLOWING FIGURE)
- TAPE AND REEL SPECIFICATION IS AS PER EIA-481.
- TAPE AND REEL QUANTITY : 520 PCS/ REEL
- THE TAPE IS TREATED FOR ANTI-STATIC.

UPATE DIMENSION EC NO: S2008-0498 DRWN:ATSEE 2008/09/25 CHKD:SKANG 2008/09/26 APPR:MLONG 2008/09/26	QUALITY SYMBOLS	GENERAL TOLERANCES (UNLESS SPECIFIED)	DIMENSION STYLE	SCALE	DESIGN UNITS	THIRD ANGLE PROJECTION
	▽=0 ◻=0	mm INCH 4 PLACES ± --- ± --- 3 PLACES ± --- ± --- 2 PLACES ± 0.25 ± --- 1 PLACE ± --- ± --- ANGULAR ± 3 °	MM ONLY	NTS	METRIC	
	DESCRIPTION	DRAFT WHERE APPLICABLE MUST REMAIN WITHIN DIMENSIONS	DRAWN BY: CGOH DATE: 2004/08/05 CHECKED BY: PTLIM DATE: 2004/10/01 APPROVED BY: SCLW DATE: 2004/11/01	TITLE	2.0 B/B CONN. PLUG SMT (PANEL DETACHABLE TYPE) IN TUBE AND T&R	
	REV		MATERIAL NO.	SEE TABLE	DOCUMENT NO.	MOLEX INCORPORATED SD-87792-005



SECTION P-P
(COVER ONLY)

PLATING OPTION	ASSEMBLY P/N WITH CAP IN TUBE	CAP P/N	CKT	F	G	H	I
Au PLATING AT CONTACT AREA AND TIN/LEAD AT SOLDER TAIL	87792-1014	87792-0003	14	18.20	16.15	14.70	15.15
	87792-1016	87792-0004	16	20.20	18.15	16.70	17.15
Au PLATING AT CONTACT AREA AND TIN AT SOLDER TAIL	87792-1114	87792-0003	14	18.20	16.15	14.70	15.15
	87792-1116	87792-0004	16	20.20	18.15	16.70	17.15
	87792-1120	87792-0005	20	24.20	22.15	20.70	21.15



CAP

2.0MM DETACHABLE CONNECTOR HEADER

ASSEMBLY WITH CAP

REVISED PER EC NO: S2006-0838 DRWN:CGOH CHKD:NAGESHKN APPR:PTLIM 2006/07/12 2006/07/12 2006/07/12	QUALITY SYMBOLS	GENERAL TOLERANCES (UNLESS SPECIFIED)	DIMENSION STYLE	SCALE	DESIGN UNITS	THIRD ANGLE PROJECTION															
	$\nabla=0$ $\sphericalangle=0$	<table border="1"> <thead> <tr> <th></th> <th>mm</th> <th>INCH</th> </tr> </thead> <tbody> <tr> <td>4 PLACES</td> <td>± ---</td> <td>± ---</td> </tr> <tr> <td>3 PLACES</td> <td>± ---</td> <td>± ---</td> </tr> <tr> <td>2 PLACES</td> <td>± 0.25</td> <td>± ---</td> </tr> <tr> <td>1 PLACE</td> <td>± ---</td> <td>± ---</td> </tr> </tbody> </table>		mm	INCH	4 PLACES	± ---	± ---	3 PLACES	± ---	± ---	2 PLACES	± 0.25	± ---	1 PLACE	± ---	± ---	MM ONLY	NTS	METRIC	
		mm	INCH																		
	4 PLACES	± ---	± ---																		
3 PLACES	± ---	± ---																			
2 PLACES	± 0.25	± ---																			
1 PLACE	± ---	± ---																			
	ANGULAR ± 3°																				
	DRAFT WHERE APPLICABLE MUST REMAIN WITHIN DIMENSIONS	SEE TABLE																			

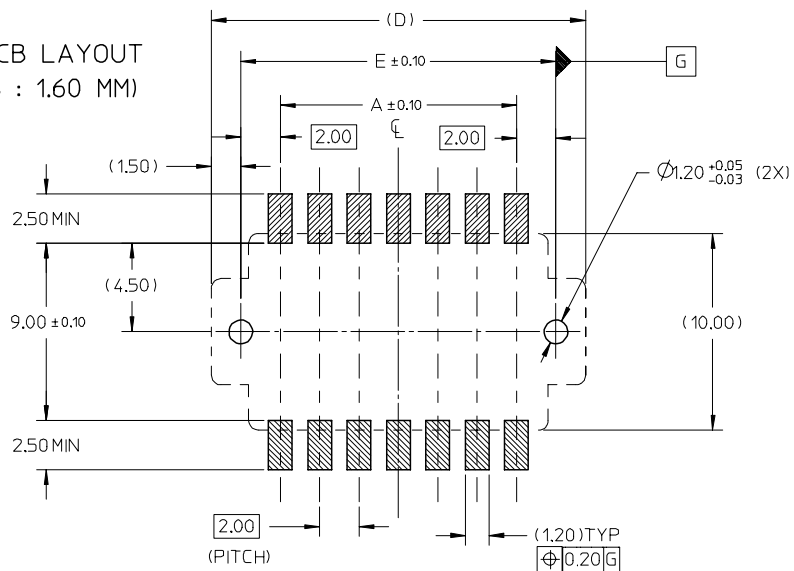
TITLE
2.0 B/B CONN. PLUG SMT (PANEL DETACHABLE TYPE) IN TUBE AND T&R

MOLEX INCORPORATED

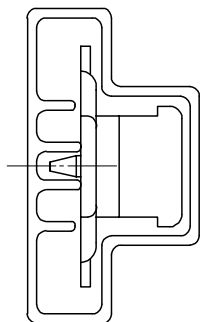
DOCUMENT NO. SD-87792-005 SHEET NO. 2 OF 4

THIS DRAWING CONTAINS INFORMATION THAT IS PROPRIETARY TO MOLEX INCORPORATED AND SHOULD NOT BE USED WITHOUT WRITTEN PERMISSION

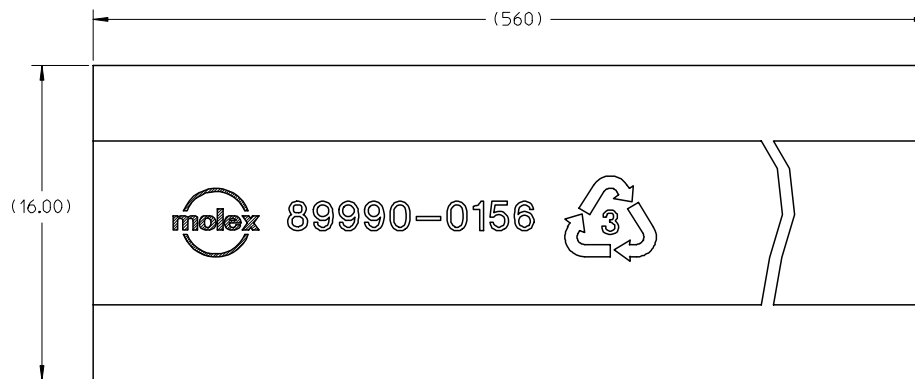
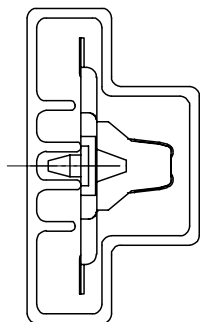
RECOMMENDED PCB LAYOUT
(PCB THICKNESS : 1.60 MM)



ASSEMBLY WITH CAP
IN TUBE



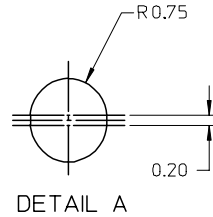
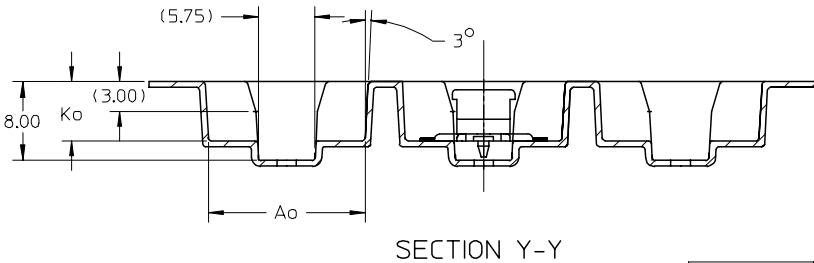
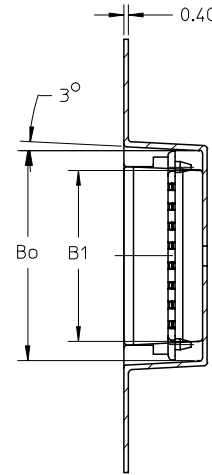
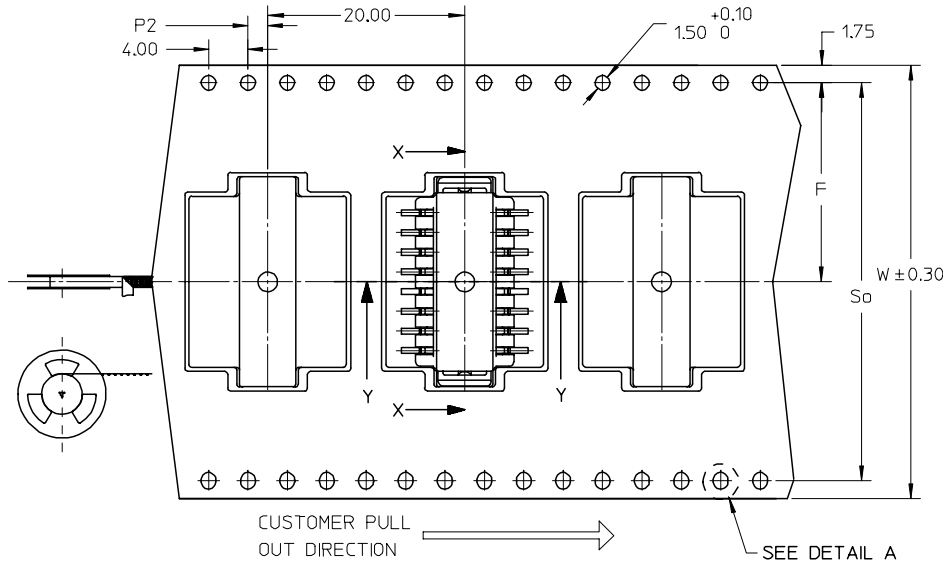
ASSEMBLY WITHOUT
CAP IN TUBE



REVISED PER EC NO: S2006-0838 DRWN:CGOH CHKD:NAGESHKN APPR:PTLIM 2006/07/12 2006/07/12 2006/07/12	QUALITY SYMBOLS ▽=0 ∇=0	GENERAL TOLERANCES (UNLESS SPECIFIED)		DIMENSION STYLE MM ONLY		SCALE NTS	DESIGN UNITS METRIC	THIRD ANGLE PROJECTION		
			mm	INCH	DRAWN BY	DATE	TITLE 2.0 B/B CONN. PLUG SMT (PANEL DETACHABLE TYPE) IN TUBE AND T&R			
		4 PLACES	± ---	± ---	CGOH	2004/08/05				
		3 PLACES	± ---	± ---	CHECKED BY	DATE	MOLEX INCORPORATED			
2 PLACES	± 0.25	± ---	PTLIM	2004/10/01						
1 PLACE	± ---	± ---	APPROVED BY	DATE	MATERIAL NO. SCLW		DOCUMENT NO. SD-87792-005		SHEET NO. 3 OF 4	
DRAFT WHERE APPLICABLE MUST REMAIN WITHIN DIMENSIONS		ANGULAR ± 3 °		SEE TABLE		THIS DRAWING CONTAINS INFORMATION THAT IS PROPRIETARY TO MOLEX INCORPORATED AND SHOULD NOT BE USED WITHOUT WRITTEN PERMISSION				

TAPE AND REEL DETAIL

PLATING OPTION	ASSEMBLY P/N WITH CAP IN TAPE & REEL	CKT SIZE	F	Bo	B1	So	W	Ao	Ko	P2
Au PLATING AT CONTACT AREA AND TIN/LEAD AT SOLDER TAIL	87792-2016	16	20.20	21.35	17.35	40.40	44.00	15.90	6.00	2.00
Au PLATING AT CONTACT AREA AND TIN AT SOLDER TAIL	87792-2116									
	87792-2120	20		25.35	21.35					



NOTES:

- LEADER AND TRAILER TAPE
- PEELING OFF FORCE OF THE TOP TAPE: 20 - 80gf. (PEELING DIRECTION AS SHOWN IN FOLLOWING FIGURE)
- TAPE AND REEL SPECIFICATION IS AS PER EIA-481.
- TAPE AND REEL QUANTITY : 520 PCS/ REEL
- THE TAPE IS TREATED FOR ANTI-STATIC.

REVISED PER EC NO: S2006-0838 DRWN:CGOH CHKD:NGESHKN APPR:PTLIM 2006/07/12 2006/07/12 2006/07/12	QUALITY SYMBOLS ▽=0 ▽=0	GENERAL TOLERANCES (UNLESS SPECIFIED)		DIMENSION STYLE	SCALE	DESIGN UNITS	THIRD ANGLE PROJECTION	
				MM ONLY	NTS	METRIC		
				DRAWN BY	DATE	TITLE		
				CGOH	2004/08/05	2.0 B/B CONN. PLUG SMT (PANEL DETACHABLE TYPE) IN TUBE AND T&R		
		4 PLACES ± --- ± ---		CHECKED BY	DATE	MOLEX INCORPORATED		
		3 PLACES ± --- ± ---		PTLIM	2004/10/01	SD-87792-005		
		2 PLACES ± 0.25 ± ---		APPROVED BY	DATE	SHEET NO.		
		1 PLACE ± --- ± ---		SCLOW	2004/11/01	4 OF 4		
		ANGULAR ± 3°		MATERIAL NO.		DOCUMENT NO.		
		DRAFT WHERE APPLICABLE MUST REMAIN WITHIN DIMENSIONS		SEE TABLE		SD-87792-005		
				SIZE				
				A3		THIS DRAWING CONTAINS INFORMATION THAT IS PROPRIETARY TO MOLEX INCORPORATED AND SHOULD NOT BE USED WITHOUT WRITTEN PERMISSION		