

# Monolithic crystal filter

## MQF21.4-1500/33



### Application

- 10 pol filter
- i.f.- filter
- use in mobile and stationary transceivers

### Limiting values

		Unit	Value
Nominal frequency	$f_0$	MHz	21.4
Insertion loss		dB	< 4.0
Pass band at 6.0dB		kHz	$\pm > 7.5$
Ripple in pass band	$f_0 \pm 6.25$ kHz	dB	< 2.0
Stop band attenuation	$f_0 \pm 12.5$ kHz	dB	> 50
	$f_0 \pm 15$ kHz	dB	> 70
	$f_0 \pm 17.5$ kHz	dB	> 80
Alternate attenuation	$f_0 \pm 20 \dots 500$ kHz	dB	> 90
Group delay distortion	$f_0 \pm 6.25$ kHz	$\mu s$	< 70

### Terminating impedance Z

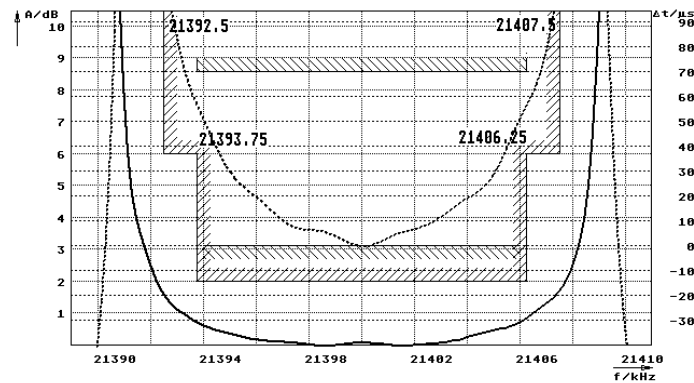
R1  C1	Ohm/pF	1500    1
R2  C2	Ohm/pF	1500    1

### Operating temp. range

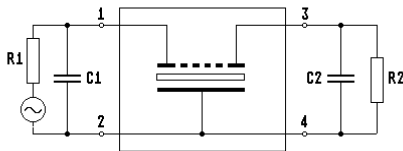
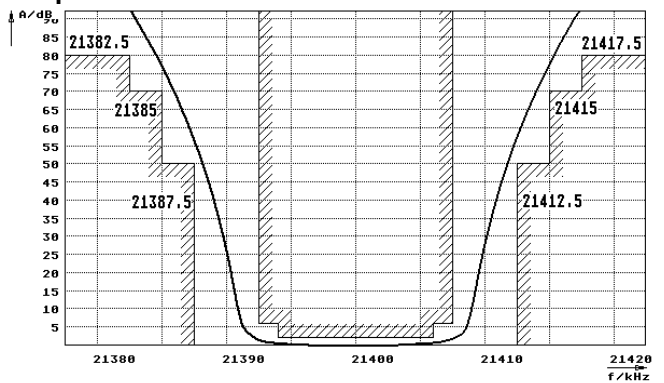
°C -20... +70

### Characteristics MQF21.4-1500/33

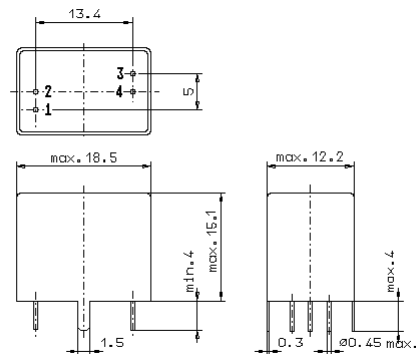
#### Pass band



#### Stop band



- Pin connections:
- 1 Input
  - 2 Ground-Input
  - 3 Output
  - 4 Ground-Output



GV5.1