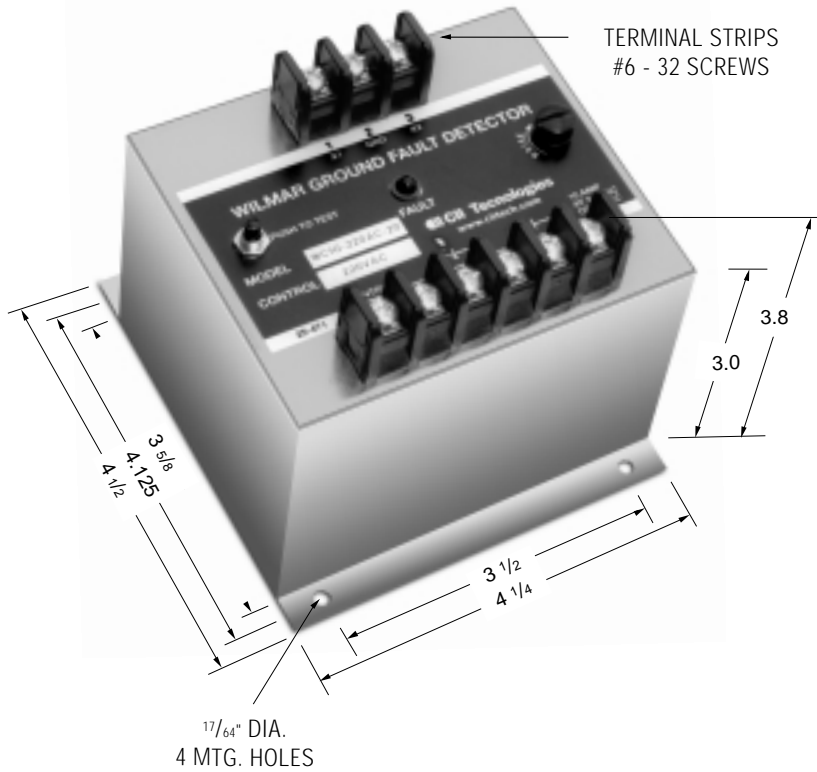


WILMAR™ Protective Relays – WC1G Series - Grounded



Function:

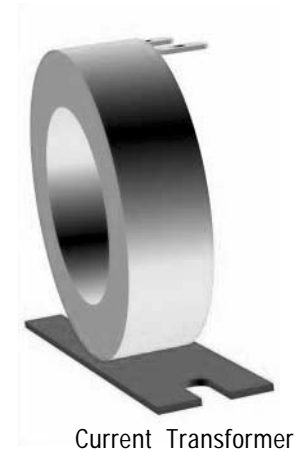
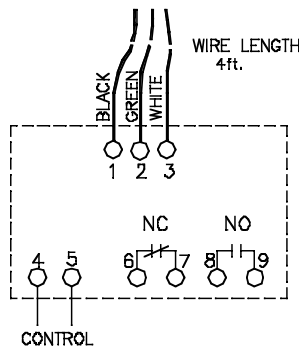
WILMAR Ground Fault Detectors are designed to provide very sensitive Ground-Current protection for motor, equipment and personnel from damage or electrical shock. In a ground system, the leakage current is monitored through a toroidal or doughnut current transformer placed around the supply conductors to a motor, transformer, equipment or outlets. Since the sums of the current in a system add to zero, the relay is responsive only to ground-fault current.

Operation:

The output contacts are shown in de-energized position. They will change state when these conditions are met:

1. Control voltage is applied.
2. Leakage current exceed the trip setting.

Note: Dimensions in inches. Multiply by values by 25.4 for dimensions in mm.



| PRODUCT SPECIFICATIONS | |
|-----------------------------|--|
| Part Number | WC1G Series |
| CT Window Diameter | 1.7 inches (std) or can be specified by customer |
| Leakage Current Range | 10 to 60 mA |
| Control Voltage | See Part Number Selection |
| Output Contacts | One set N.C., one set N.O. |
| Operating Temperature | 40°C to +65°C |
| Contact Ratings | 10 amp resistive at 250 Vac, 8 amp. resistive @ 30 Vdc |

| PART NUMBER SELECTION | |
|-----------------------|------------|
| Sample Part No. | WC1G-120AC |
| Model: | WC1G- |
| Control Voltage | 120AC |
| | 220AC |
| | 230AC |
| | 380AC |
| | 400AC |
| | 460AC |
| | 480AC |
| | 575AC |

Notes:

1. Remove screw for access to the pick-up adjustment potentiometer.
2. Clockwise rotation of the adjustment potentiometer will raise the relay sensitivity.