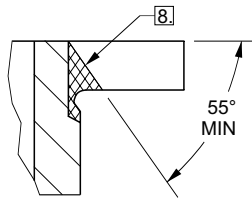
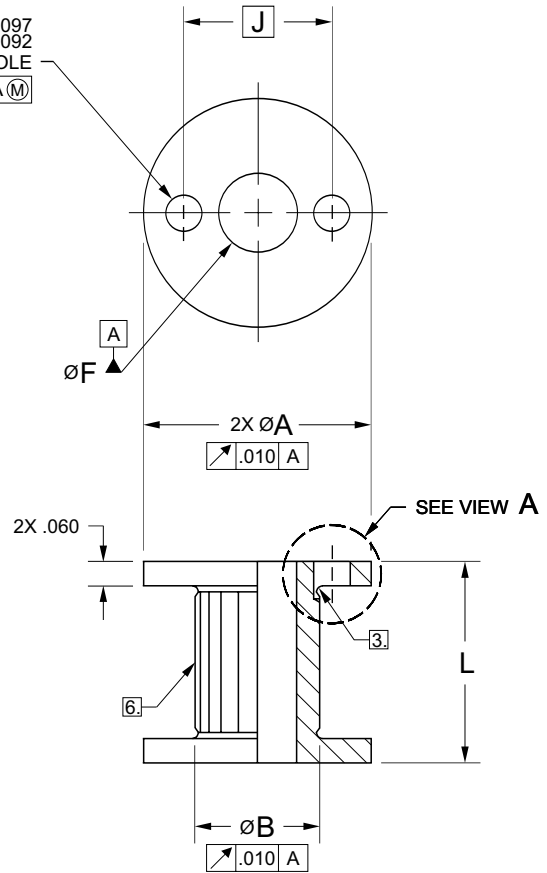


OPTIONAL SLOTS 7



VIEW A FOR OPTIONAL SLOTS



PART NUMBER CODING:

TYE2003-3-500S

BASIC NUMBER _____
 MATERIAL CODE: SEE TABLE II _____
 SIZE CODE: SEE TABLE I _____

P - INDICATES CADMIUM PLATE ON CRES INSERT PER QQ-P-416, TYPE II, CLASS 2
S - INDICATES SILVER PLATE PER AMS2410 OR AMS2411
 LENGTH 'L' IN THOUSANDTHS

APPROVAL DATE 09-13-80 REVISION A 03-22-91 B 06-04-99

UNLESS OTHERWISE SPECIFIED
 DIMENSIONS ARE IN INCHES

TOLERANCE ON
 DECIMAL: ANGLE:
 .XX: ±.02 ±2°
 .XXX: ±.010

The YOUNG ENGINEERS, Inc.

engineering • manufacturing • aerospace fasteners

P.O. BOX 278, LAKE FOREST, CA 92630-0278

**INSERT: MOLDED IN,
 CLEARANCE HOLE, SANDWICH PANEL**

CAGE CODE	SERIES NUMBER
56958	TYE2003 SERIES

SHEET 1 OF 2



TABLE I

SIZE CODE	ØF CLEARANCE HOLE	ØA +.000 -.010	ØB	J BASIC	K MIN	L ^[5] MIN	INSTALLATION HOLE Ø	TAB CODE ^[9]
04	.113 - .119	.560	.30	.367	.260	.200	.561 - .566	NAS1837T3
06	.139 - .145	.560	.30	.367	.260	.200	.561 - .566	NAS1837T3
08	.168 - .174	.560	.30	.367	.260	.200	.561 - .566	NAS1837T3
3	.195 - .201	.560	.30	.367	.260	.200	.561 - .566	NAS1837T3
4	.256 - .263	.685	.37	.467	.360	.200	.686 - .691	NAS1837T6
5	.315 - .322	.685	.47	.467	.360	.250	.686 - .691	NAS1837T6
6	.376 - .383	.841	.50	.591	.484	.250	.842 - .847	NAS1837T9

TABLE II

MATL CODE	MATERIAL	FINISH
-	CARBON STEEL PER ASTM A 108, ASTM A 576, OR MATERIAL COMPOSITION PER FED-STD-66, ULTIMATE TENSILE STRENGTH 85KSI MIN	CAD PLATE PER QQ-P-416, TYPE II, CLASS 2
A	AL ALLOY, GRADE 2024, TEMPER T4 OR T351 PER QQ-A-225/6	ANODIZE PER MIL-A-8625, TYPE I, CLASS 1
C	CORROSION RESISTANT STEEL, TYPE 303 CRES PER ASTM A 582	PASSIVATE PER QQ-P-35, TYPE II

NOTES

- DIMENSIONING AND TOLERANCING PRACTICES PER ASME Y14.5M-1994.
- DIMENSIONAL LIMITS APPLY AFTER PLATING.
- BURRS CAUSED BY MACHINING POTTING HOLES OR SLOTS PERMISSIBLE UNDER FLANGE.
- SURFACE TEXTURE: 125 MICRONS PER ASME B46.1-1995.
- MINIMUM LENGTH WHICH MAY BE SPECIFIED.
- STRAIGHT OR DIAMOND ANTIROTATION KNURL (MANUFACTURER'S OPTION).
- POTTING AND VENT HOLES OR SLOTS (MANUFACTURER'S OPTION).
- CONFIGURATION WITHIN THIS AREA (MANUFACTURER'S OPTION).
- AN ADHESIVE BACKED INSTALLATION TAB (ALUMINUM OR PLASTIC) SHALL BE FURNISHED WITH EACH INSERT. NOTE: WHEN TAB MATERIAL PREFERENCE IS DESIRED, PROCURING ACTIVITY SHALL SPECIFY.
- FOR INSTALLATION PROCEDURE, REFER TO "INSTALLATION PROCEDURE FOR MOLDED IN INSERTS".
- CONSULT THE TYE ENGINEERING DEPARTMENT FOR OTHER FINISHES, MATERIALS, OR SIZES.

UNLESS OTHERWISE SPECIFIED
DIMENSIONS ARE IN INCHES

TOLERANCE ON
DECIMAL: ANGLE:
.XX: ± .02 ± 2°
.XXX: ± .010

The YOUNG ENGINEERS, Inc.

engineering • manufacturing • aerospace fasteners

P.O. BOX 278, LAKE FOREST, CA 92630-0278

**INSERT: MOLDED IN,
CLEARANCE HOLE, SANDWICH PANEL**

SHEET 2 OF 2	CAGE CODE 56958	SERIES NUMBER TYE2003 SERIES
--------------	--------------------	---------------------------------