

4 3 2 1

DRAWING MADE IN THIRD ANGLE PROJECTION

THIS DRAWING IS UNPUBLISHED.

RELEASED FOR PUBLICATION

,19

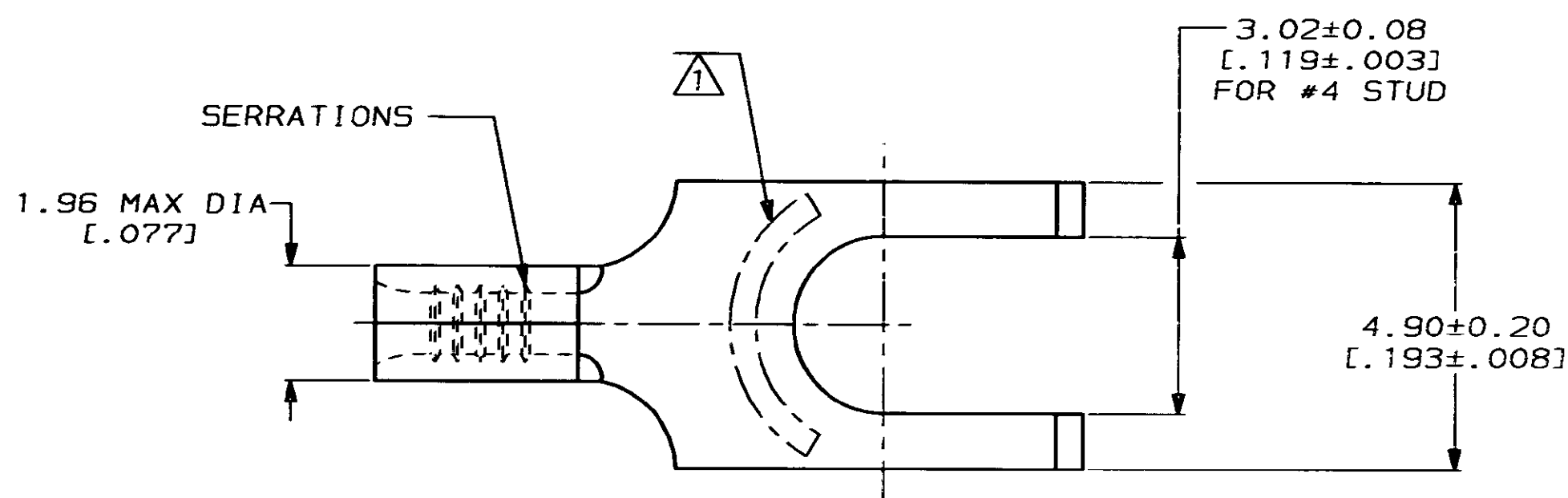
© COPYRIGHT 19

BY AMP INCORPORATED. ALL INTERNATIONAL RIGHTS RESERVED.

LOC	DIST	P	F	ZONE	LTR	REVISIONS	DESCRIPTION	DATE	APPD
G	14					0	RELEASED PER 0720-0008-93	3-1-93	1 <sup>st</sup> DAP

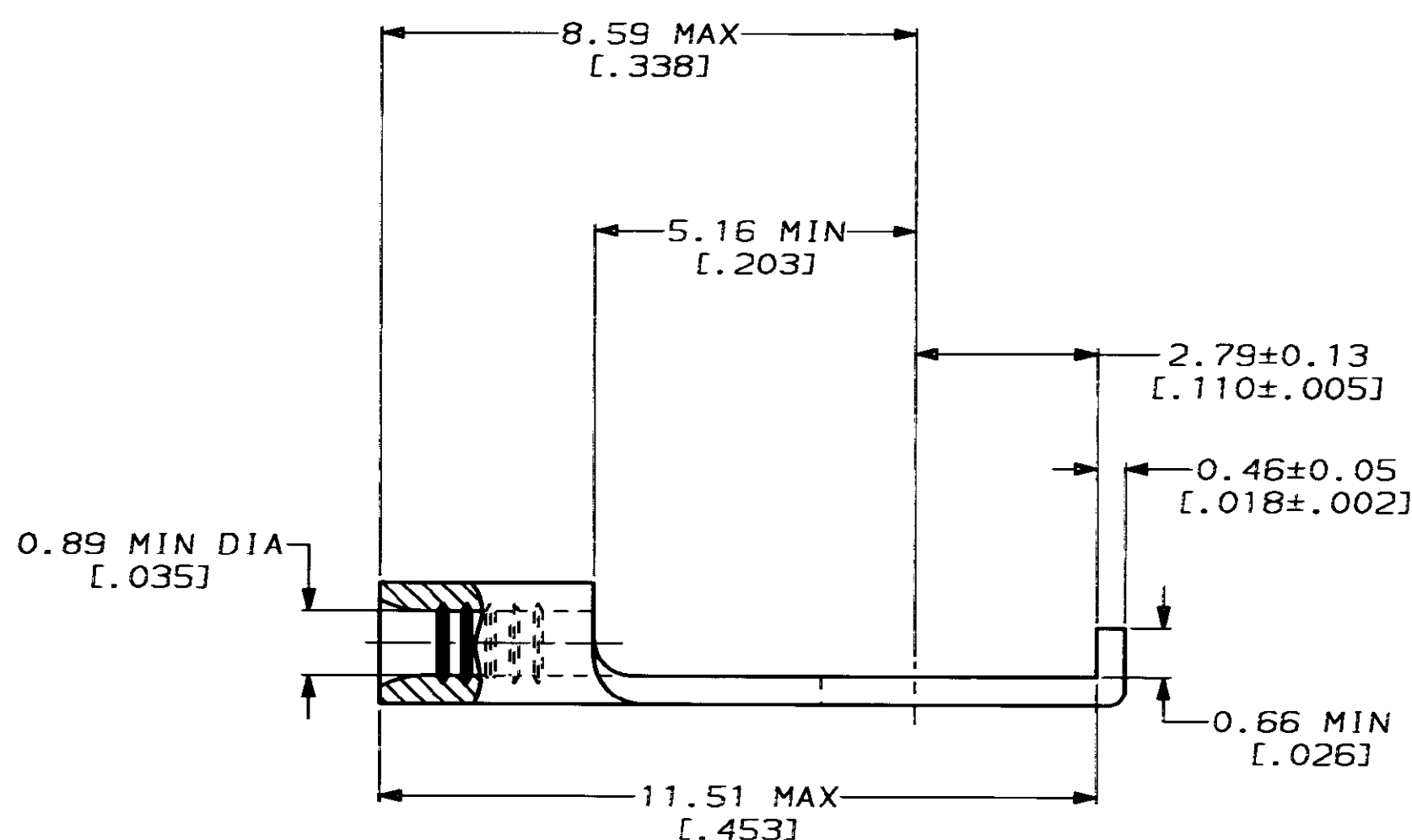
**METRIC**

DIMENSIONS LISTED IN mm [ INCHES ]



<b>AMP</b> WIRE RANGE	E13288 Listed
26-22 AWG STRANDED	NOT LISTED
LR7189 Certified	MILITARY P/N AND CLASS
NOT CERTIFIED	NOT APPLICABLE

△ STAMP AMP APPROX AS SHOWN



52512-1

PART NO

**AMP INCORPORATED**  
CUSTOMER SERVICE SYSTEMS

MAX RECOMMENDED OPERATING  
TEMPERATURE:  
170°C MAX

DO NOT SCALE PRINT.  
UNLESS SPECIFIED  
DIMENSIONS IN mm [INCHES]  
TOLERANCES ON:  
2 PLC DEC ± -  
3 PLC DEC ± -  
ANGLES ± -

DR 3-1-93  
TA BRINKMAN  
CHK 3-1-93  
DA PATTERSON

**AMP** AMP Incorporated  
Harrisburg, PA 17105-3608

FOR ADDITIONAL  
PRODUCT INFORMATION OR  
COPIES OF DRAWINGS  
AND TECHNICAL DOCUMENTS

PRODUCT INFORMATION CENTER  
1-800-522-6752

VOLTAGE RATING:  
NOT APPLICABLE

MATERIAL  
COPPER PER  
ASTM B-152  
ANNEALED

APPD 3-1-93  
DE MILLER

APPD 3-1-93  
JL MECKLEY

PRODUCT SPEC

NAME  
TERMINAL, FLANGED  
SPADE, BUDGET

FOR APPLICATION  
TOOLING INFORMATION

TOOLING ASSISTANCE CENTER  
1-800-722-1111

WIRE CROSS SECTIONAL AREA RANGE:  
0.1-0.41mm<sup>2</sup> [202-810] CIR MILS  
STRANDED

FINISH  
TIN PLATE  
0.00254 [.000100] MIN  
THK PER MIL-T-10727

APPLICATION SPEC

WEIGHT

SIZE  
C 00779  
DRAWING NO  
C-52512

SCALE 10:1 SHEET 1 OF 1

THIS DRAWING IS A CONTROLLED DOCUMENT FOR  
AMP INCORPORATED. IT IS SUBJECT TO CHANGE  
AND THE CONTROLLING ENGINEERING ORGANIZATION  
SHOULD BE CONTACTED FOR THE LATEST REVISION.

AMP 1471-6 REV 3-92

21 JUL 1993 14:48:43 AMP26463 <US128A>DEPT1123>DWG1123>U.BODIES>U.26-22

CUSTOMER DRAWING