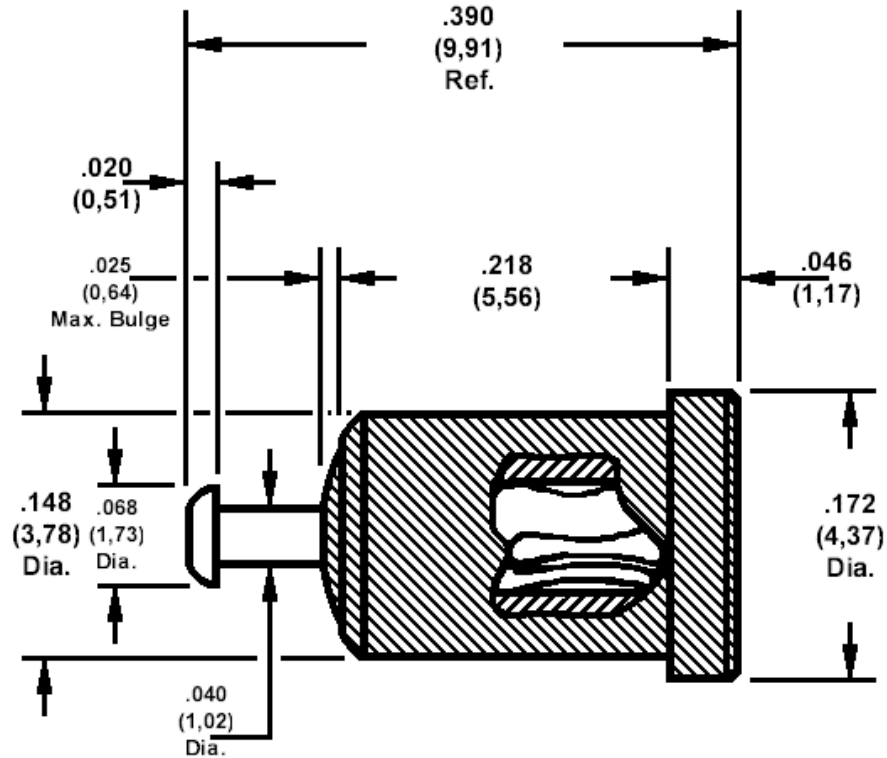


## 450-4352 Teflon Insulated, press mount socket, for .040 (1,02) diameter pins

Recommended mounting hole .135 (3,45) ±.002 (0,05)



Min hole depth .190 (4,85)

### How to order code

**450-4352-01-XX-YY**

Basic Part No XX = Finish, YY = Colour

MATERIALS				
Component	Material	Finish(-03)	Finish(-04)	Finish(-06)
Body	Brass	Gold over Nickel	Tin	Tin
Spring	Beryllium copper	Gold over Nickel	Tin	Gold over Nickel
Insulator	PTFE	-	-	-

COLOURS				
Color (YY)	-10	-12	-16	-19
	Black	Red	Blue	White

Select colour (others available to order, consult factory)

ADDITIONAL INFORMATION			
Basic Part No	For Panel Thickness	Flashover at sea level (VRMS)	Capacitance (pF)
450-4352-01-XX-YY	.031 (0,79) to .094 (2,39)	2500	.7

Teflon is a registered trademark of Dupont