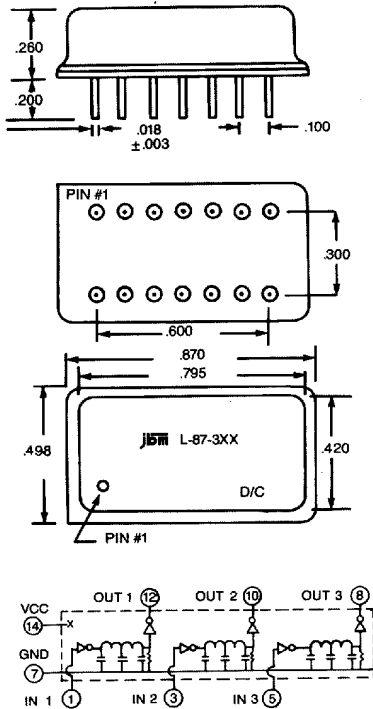


L-87 SERIES

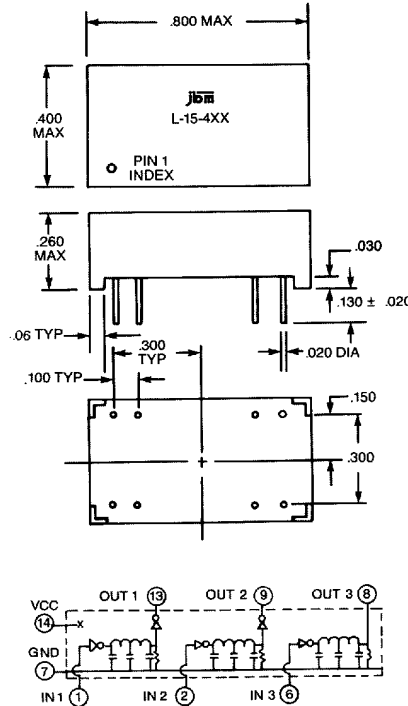
3 DL/Pkg. Active
Hermetic



L-15-400 SERIES*

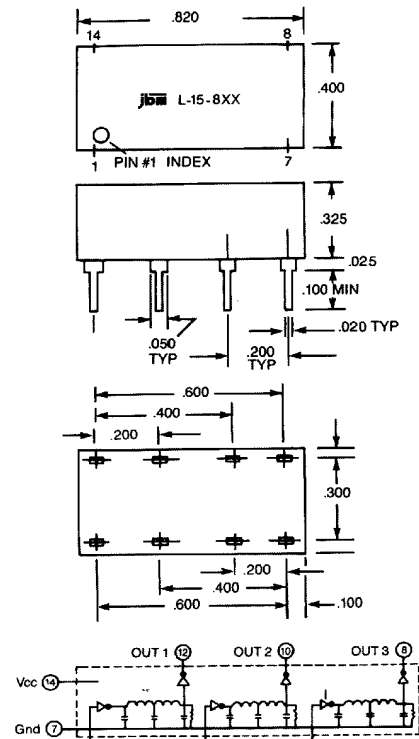
3 DL/Pkg. Active
Low Profile

* See DESC Listing pg. 28



L-15-800 SERIES

3 DL/Pkg. Active



Delay Time	Hermetic Metal Can	Lo Profile Epoxy	Standard Epoxy
5 ± 2ns	L-87-300	L-15-450	L-15-850
6 ± 2ns	L-87-301	L-15-468	L-15-851
7 ± 2ns	L-87-302	L-15-469	L-15-852
8 ± 2ns	L-87-303	L-15-470	L-15-853
9 ± 2ns	L-87-304	L-15-471	L-15-854
10 ± 2ns	L-87-305	L-15-451	L-15-855
15 ± 2ns	L-87-306	L-15-452	L-15-856
20 ± 2ns	L-87-307	L-15-453	L-15-857
30 ± 2ns	L-87-308	L-15-455	L-15-858
40 ± 2ns	L-87-309	L-15-457	L-15-859
50 ± 2.5ns	L-87-310	L-15-459	L-15-860
60 ± 3ns	L-87-311	L-15-472	L-15-861
75 ± 3.7ns	L-87-313	L-15-460	L-15-863
80 ± 4ns	L-87-314	L-15-473	L-15-864
90 ± 4.5ns	L-87-315	L-15-474	L-15-865
100 ± 5ns	L-87-316	L-15-461	L-15-866
125 ± 6.2ns	L-87-317	L-15-462	L-15-867
150 ± 7.5ns	L-87-318	L-15-463	L-15-868
175 ± 8.7ns	L-87-319	L-15-464	L-15-885
200 ± 10ns	L-87-320	L-15-465	L-15-886
225 ± 11.2ns	L-87-330	L-15-466	L-15-887
250 ± 12.5ns	L-87-331	L-15-467	L-15-889

Delays Over Temp. Range ± 3ns or 8%

FEATURES

- High drive capability
- Excellent noise margin
- Utilizes hermetic/ceramic integrated circuits screened to MIL-STD-883, LEVEL B
- Low power
- Fast rise time
- Low supply current

DELAY LINE CHARACTERISTICS

Input Characteristics:

- V_{IH} Logic "1" Input Voltage 2.0V Min.
- V_{IL} Logic "0" Input Voltage 0.8V Max.
- I_{IH} Logic "1" Input Current 50µA Max.
- I_{IL} Logic "0" Input Current -2.0mA Max.

Output Characteristics:

- V_{OH} Logic "1" Output Voltage 2.7V Min.
- V_{OL} Logic "0" Output Voltage 0.5V Max.
- I_{CC} Supply Current 75mA Max.

Environment:

- Operating temperature -55°C to +125°C
- Storage temperature -55°C to +125°C
- Operating supply voltage 4.5 to 5.5V

Test Conditions:

- Ambient Temperature 25°C
- Supply Voltage (Vcc) 5.0 ± .05Vdc
- Input Pulse Amplitude 3.2V Nom.
- Input Pulse Width (tw) 2 × TD
- Input Pulse Duty Cycle 25%
- Input Pulse Rise Time 3 nsec (10% - 90%)