

PLEASE CHECK WWW.MOLEX.COM FOR LATEST PART INFORMATION

Part Number: [0014566029](#)
Status: **Active**
Overview: [cgrid_sl_products](#)
Description: 2.54mm (.100") Pitch SL™ Insulation Displacement Connector Assembly, Female, Single Row, Version A, Nonpolarized, Wire Size 22, 3.81µm (150µ") Tin/Lead (SnPb), 2 Circuits

Documents:

[3D Model](#) [Product Specification PS-70400 \(PDF\)](#)
[Drawing \(PDF\)](#) [RoHS Certificate of Compliance \(PDF\)](#)

Agency Certification

CSA LR19980
 UL E29179

General

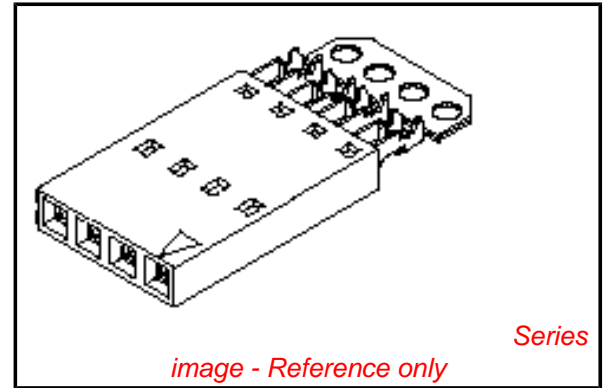
Product Family Ribbon Cable / Wire Trap Connectors
 Series [70400](#)
 Comments Terminals Preloaded
 Component Type Housing
 Glow-Wire Compliant No
 Overview [cgrid_sl_products](#)
 Product Name SL™

Physical

Circuits (Loaded) 2
 Color - Resin Black
 Durability (mating cycles max) 25
 Entry Angle Vertical
 Flammability 94V-0
 Lock to Mating Part None
 Material - Metal Phosphor Bronze
 Material - Plating Mating Tin
 Material - Plating Termination Tin
 Material - Resin Polyester Alloy
 Number of Rows 1
 PCB Retention None
 Packaging Type Tube
 Pitch - Mating Interface (in) 0.100 In
 Pitch - Mating Interface (mm) 2.54 mm
 Plating min: Mating (µin) 150
 Plating min: Mating (µm) 3.75
 Plating min: Termination (µin) 75
 Plating min: Termination (µm) 1.875
 Polarized to Mating Part No
 Stackable Yes
 Surface Mount Compatible (SMC) N/A
 Temperature Range - Operating -40°C to +105°C
 Termination Interface: Style IDT or Pierce
 Wire Insulation Diameter 1.35mm (.053") max.
 Wire Size AWG 22
 Wire/Cable Type Discrete Wire, Ribbon Cable

Electrical

Current - Maximum per Contact 3A
 Voltage - Maximum 250V



EU RoHS

**ELV and RoHS
 Compliant**
**REACH SVHC
 Not Reviewed**
**Halogen-Free
 Status**

China RoHS



**Need more information on product
 environmental compliance?**

Email productcompliance@molex.com
 For a multiple part number RoHS Certificate of Compliance, [click here](#)

Please visit the [Contact Us](#) section for any non-product compliance questions.

Search Parts in this Series

[70400Series](#)

Mates With

Single Row headers and housings, [8624](#) , [70203](#) , [42375](#) , [42377](#)

Use With

[7307](#) Tinned 28AWG, [7767](#) Topcoat 28AWG, [24241](#) Tinned 26AWG, [8996](#) Topcoat 26AWG, [24226](#) Tinned 24AWG, [8997](#) Topcoat 24AWG, [24369](#) High Flex 26AWG, [24389](#) High Flex 24AWG

Application Tooling | FAQ

Tooling specifications and manuals are found by selecting the products below. Crimp Height Specifications are then contained in the Application Tooling Specification document.

Global

Description	Product #
Hawk Semi- Automatic Discrete	0011201337

Material Info

Old Part Number 70400-3000

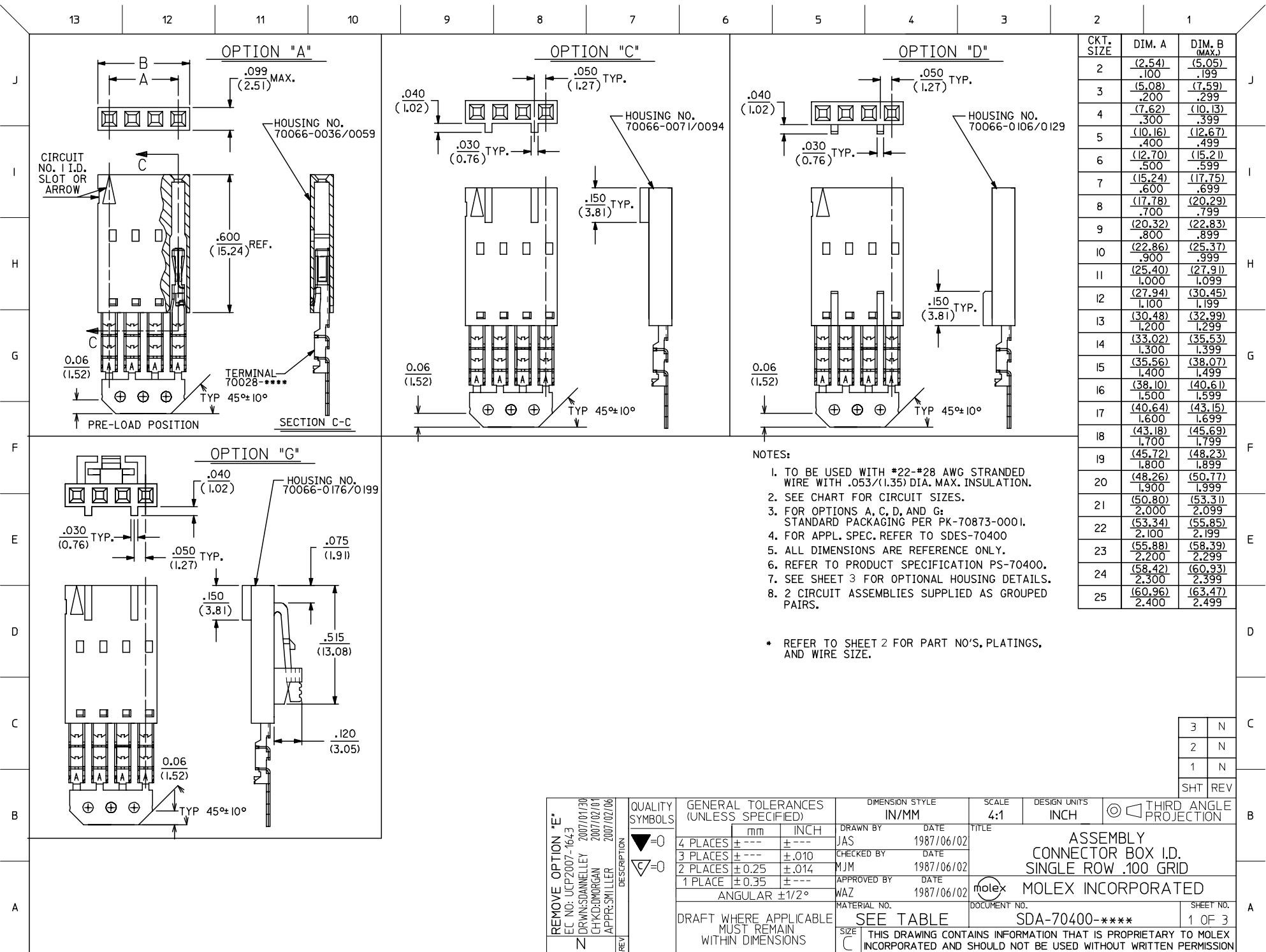
Reference - Drawing Numbers

Product Specification PS-70400
Sales Drawing SDA-70400-****, SDA-70400-3000-3023

Wire Terminator for
SL - Rebuilt US*
Hawk™ Ribbon 0623003000
Cable Terminator for
SL without Break-off
Hawk™ Semi- 0623004900
Automatic Discrete
Wire Terminator
for SL - Rebuilt CE
Approved*
Hawk™ Flat Flex 0623005200
Cable Terminator for
SL with Break-off
Hawk™ Ribbon 0623005300
Cable Terminator
with for SL Break-off
IDT Discrete 0621000700
Handtool Module for
SL™
Hawk™ Semi- 0623003100
Automatic Discrete
Wire Terminator for
SL

This document was generated on 05/21/2010

PLEASE CHECK WWW.MOLEX.COM FOR LATEST PART INFORMATION



CKT. SIZE	DIM. A	DIM. B (MAX.)
2	(2.54)	(5.05)
	.100	.199
3	(5.08)	(7.59)
	.200	.299
4	(7.62)	(10.13)
	.300	.399
5	(10.16)	(12.67)
	.400	.499
6	(12.70)	(15.21)
	.500	.599
7	(15.24)	(17.75)
	.600	.699
8	(17.78)	(20.29)
	.700	.799
9	(20.32)	(22.83)
	.800	.899
10	(22.86)	(25.37)
	.900	.999
11	(25.40)	(27.91)
	1.000	1.099
12	(27.94)	(30.45)
	1.100	1.199
13	(30.48)	(32.99)
	1.200	1.299
14	(33.02)	(35.53)
	1.300	1.399
15	(35.56)	(38.07)
	1.400	1.499
16	(38.10)	(40.61)
	1.500	1.599
17	(40.64)	(43.15)
	1.600	1.699
18	(43.18)	(45.69)
	1.700	1.799
19	(45.72)	(48.23)
	1.800	1.899
20	(48.26)	(50.77)
	1.900	1.999
21	(50.80)	(53.31)
	2.000	2.099
22	(53.34)	(55.85)
	2.100	2.199
23	(55.88)	(58.39)
	2.200	2.299
24	(58.42)	(60.93)
	2.300	2.399
25	(60.96)	(63.47)
	2.400	2.499

- NOTES:
1. TO BE USED WITH #22-#28 AWG STRANDED WIRE WITH .053/(1.35) DIA. MAX. INSULATION.
 2. SEE CHART FOR CIRCUIT SIZES.
 3. FOR OPTIONS A, C, D, AND G: STANDARD PACKAGING PER PK-70873-0001.
 4. FOR APPL. SPEC. REFER TO SDES-70400
 5. ALL DIMENSIONS ARE REFERENCE ONLY.
 6. REFER TO PRODUCT SPECIFICATION PS-70400.
 7. SEE SHEET 3 FOR OPTIONAL HOUSING DETAILS.
 8. 2 CIRCUIT ASSEMBLIES SUPPLIED AS GROUPED PAIRS.

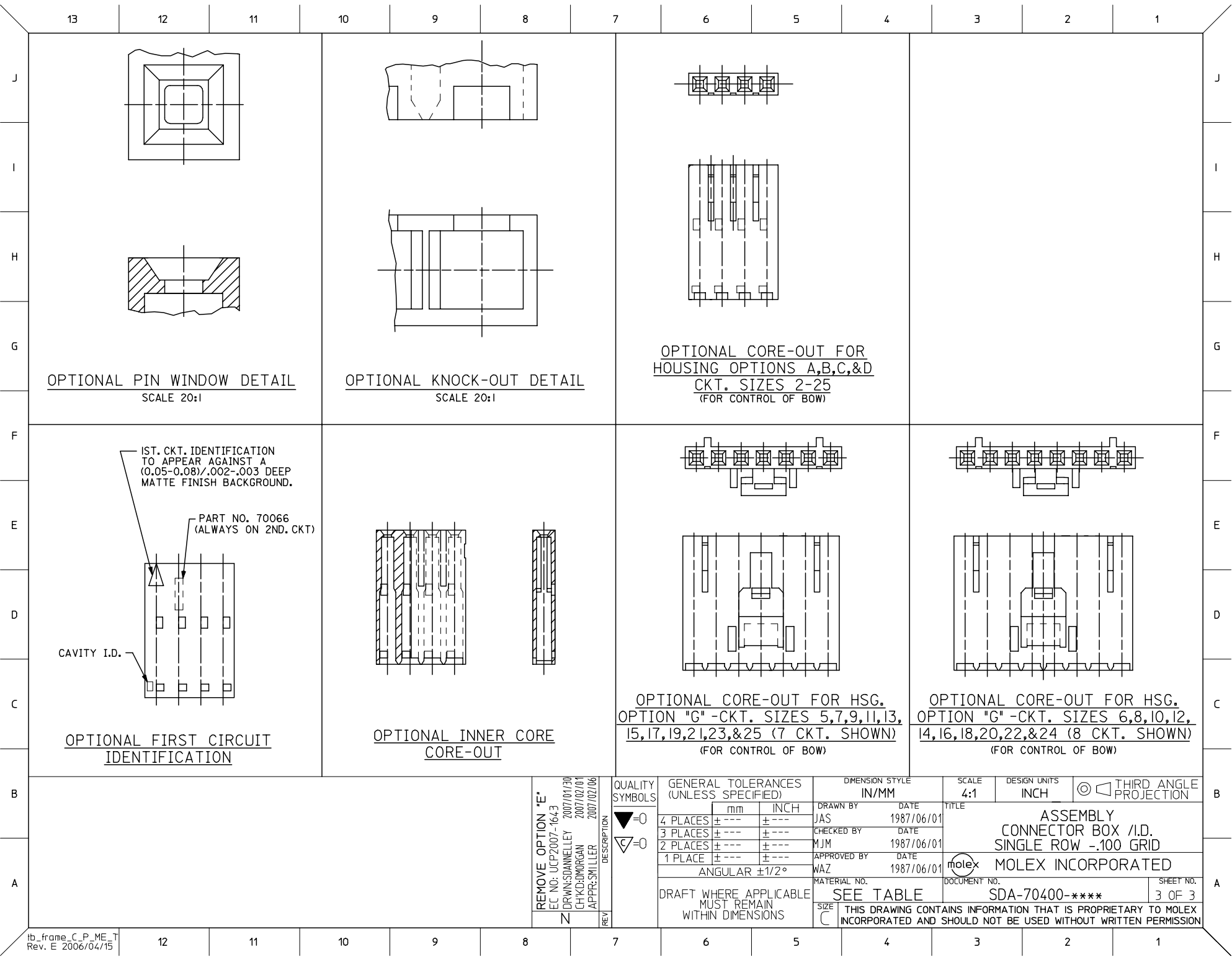
* REFER TO SHEET 2 FOR PART NO'S, PLATINGS, AND WIRE SIZE.

3	N
2	N
1	N
SHT	REV

REMOVE OPTION "E" FC NO: UCP2007-1643 DRWN:SDANNELLEY 2007/01/30 CHKD:DMORGAN 2007/02/01 APPR:SMILLER 2007/02/06 REVISIONS N	QUALITY SYMBOLS 	GENERAL TOLERANCES (UNLESS SPECIFIED) <table border="1"> <tr><th colspan="2">mm</th><th colspan="2">INCH</th></tr> <tr><td>4 PLACES</td><td>± .010</td><td>± .004</td><td>± .001</td></tr> <tr><td>3 PLACES</td><td>± .010</td><td>± .010</td><td>± .010</td></tr> <tr><td>2 PLACES</td><td>± 0.25</td><td>± .014</td><td>± .014</td></tr> <tr><td>1 PLACE</td><td>± 0.35</td><td>± .014</td><td>± .014</td></tr> </table>	mm		INCH		4 PLACES	± .010	± .004	± .001	3 PLACES	± .010	± .010	± .010	2 PLACES	± 0.25	± .014	± .014	1 PLACE	± 0.35	± .014	± .014	DIMENSION STYLE IN/MM DRAWN BY: JAS DATE: 1987/06/02 CHECKED BY: MJM DATE: 1987/06/02 APPROVED BY: WAZ DATE: 1987/06/02 MATERIAL NO.: DOCUMENT NO.:	SCALE: 4:1 DESIGN UNITS: INCH THIRD ANGLE PROJECTION	ASSEMBLY CONNECTOR BOX I.D. SINGLE ROW .100 GRID MOLEX INCORPORATED SDA-70400-**** SHEET NO. 1 OF 3
	mm		INCH																						
	4 PLACES	± .010	± .004	± .001																					
	3 PLACES	± .010	± .010	± .010																					
2 PLACES	± 0.25	± .014	± .014																						
1 PLACE	± 0.35	± .014	± .014																						
DRAFT WHERE APPLICABLE MUST REMAIN WITHIN DIMENSIONS		SEE TABLE	THIS DRAWING CONTAINS INFORMATION THAT IS PROPRIETARY TO MOLEX INCORPORATED AND SHOULD NOT BE USED WITHOUT WRITTEN PERMISSION																						

	13	12	11	10	9	8	7	6	5	4	3	2	1
	OPTION "A"				OPTION "C"				OPTION "D"				
J	ENG. NO.	PLATING	WIRE SIZE		ENG. NO.	PLATING	WIRE SIZE		ENG. NO.	PLATING	WIRE SIZE		J
	A-70400-3000-3023	TIN	22		A-70400-3035-3058	TIN	22		A-70400-3070-3093	TIN	22		
	A-70400-0001-0024	TIN	24		A-70400-0036-0059	TIN	24		A-70400-0071-0094	TIN	24		
	A-70400-0176-0199	TIN	26		A-70400-0211-0234	TIN	26		A-70400-0246-0269	TIN	26		
	A-70400-0351-0374	TIN	28		A-70400-0386-0409	TIN	28		A-70400-0421-0444	TIN	28		
I	A-70400-3175-3198	15 GOLD	22		A-70400-3210-3233	15 GOLD	22		A-70400-3245-3268	15 GOLD	22		I
	A-70400-0526-0549	15 GOLD	24		A-70400-0561-0584	15 GOLD	24		A-70400-050 GOLD-0619	15 GOLD	24		
	A-70400-0701-0724	15 GOLD	26		A-70400-0736-0759	15 GOLD	26		A-70400-0771-0794	15 GOLD	26		
	A-70400-0876-0899	15 GOLD	28		A-70400-0911-0934	15 GOLD	28		A-70400-0946-0969	15 GOLD	28		
	A-70400-3350-3373	30 GOLD	22		A-70400-3385-3408	30 GOLD	22		A-70400-3420-3443	30 GOLD	22		
	A-70400-1051-1074	30 GOLD	24		A-70400-1086-1109	30 GOLD	24		A-70400-1121-1144	30 GOLD	24		
	A-70400-1226-1249	30 GOLD	26		A-70400-1261-1284	30 GOLD	26		A-70400-1296-1319	30 GOLD	26		
H	A-70400-1401-1424	30 GOLD	28		A-70400-1436-1459	30 GOLD	28		A-70400-1471-1494	30 GOLD	28		H
									A-70400-4050-4073	50 GOLD	26		
G													
F	OPTION "G"				<p style="text-align:center;">PLATING PER ES-88:</p> <p>TIN - .000150 MINIMUM TIN OVER .000050 MINIMUM NICKEL PLATE.</p> <p>15 GOLD - .000015 MINIMUM GOLD PLATE IN SELECT AREA, .000075 MINIMUM TIN PLATE IN SELECT AREA, .000050 MINIMUM NICKEL PLATE OVERALL.</p> <p>30 GOLD - .000030 MINIMUM GOLD PLATE IN SELECT AREA, .000075 MINIMUM TIN PLATE IN SELECT AREA, .000050 MINIMUM NICKEL PLATE OVERALL.</p> <p>50 GOLD - .000050 MINIMUM GOLD PLATE IN SELECT AREA, .000075 MINIMUM TIN PLATE IN SELECT AREA, .000050 MINIMUM NICKEL PLATE OVERALL.</p> <p>TIN (P) - .000150 MINIMUM TIN OVER .000050 MINIMUM NICKEL PLATE. (PRE-PLATE)</p> <p>TIN DIP - .000020 MINIMUM HOT TIN DIP. (PRE-PLATE)</p>								
	ENG. NO.	PLATING	WIRE SIZE										
	A-70400-3140-3163	TIN	22										
	A-70400-0141-011N	TIN	24										
E	A-70400-0316-0339	TIN	26										
	A-70400-0491-0514	TIN	28										
	A-70400-2976-2999	15 GOLD	22										
	A-70400-0666-0689	15 GOLD	24										
	A-70400-0841-0864	15 GOLD	26										
	A-70400-1016-1039	15 GOLD	28										
	A-70400-3490-3513	30 GOLD	22										
D	A-70400-1191-1214	30 GOLD	24										
	A-70400-1366-1389	30 GOLD	26										
	A-70400-1541-1564	30 GOLD	28										
C													
B													
A													

REMOVE OPTION "E" EC NO: UCP2007-1643 DRAWN: DANIELLEY 2007/01/30 CHKD: BORGAN 2007/02/01 APPR: SMILLER 2007/02/06	DESCRIPTION QUALITY SYMBOLS 	GENERAL TOLERANCES (UNLESS SPECIFIED)		DIMENSION STYLE IN/MM		SCALE 4:1		DESIGN UNITS INCH		THIRD ANGLE PROJECTION	
		mm	INCH	DRAWN BY	DATE	ASSEMBLY CONNECTOR BOX /I.D. SINGLE ROW - .100 GRID MOLEX INCORPORATED MATERIAL NO. SDA-70400-**** DOCUMENT NO. 2 OF 3					
		4 PLACES ± .010	± .010	JAS	1987/11/28						
		3 PLACES ± .025	± .014	MJM	1987/11/28						
2 PLACES ± 0.35	± .014	WAZ	1987/11/28								
ANGULAR ±1/2°		APPROVED BY		DATE		MATERIAL NO.		DOCUMENT NO.		SHEET NO.	
DRAFT WHERE APPLICABLE MUST REMAIN WITHIN DIMENSIONS		SEE TABLE		DATE		DATE		DATE		DATE	



OPTIONAL PIN WINDOW DETAIL
SCALE 20:1

OPTIONAL KNOCK-OUT DETAIL
SCALE 20:1

OPTIONAL CORE-OUT FOR HOUSING OPTIONS A,B,C,&D
CKT. SIZES 2-25
(FOR CONTROL OF BOW)

IST. CKT. IDENTIFICATION TO APPEAR AGAINST A (0.05-0.08)/.002-.003 DEEP MATTE FINISH BACKGROUND.
PART NO. 70066 (ALWAYS ON 2ND. CKT.)
CAVITY I.D.
OPTIONAL FIRST CIRCUIT IDENTIFICATION

OPTIONAL INNER CORE CORE-OUT

OPTIONAL CORE-OUT FOR HSG. OPTION "G" -CKT. SIZES 5,7,9,11,13,15,17,19,21,23,&25 (7 CKT. SHOWN)
(FOR CONTROL OF BOW)

OPTIONAL CORE-OUT FOR HSG. OPTION "G" -CKT. SIZES 6,8,10,12,14,16,18,20,22,&24 (8 CKT. SHOWN)
(FOR CONTROL OF BOW)

REMOVE OPTION "E"
FC NO: UCP2007-1643
DRAWN:SDANNELLEY 2007/01/30
CHKD:DMORGAN 2007/02/01
APPR:SMILLER 2007/02/06
REV N

QUALITY SYMBOLS
 =0
 =0

GENERAL TOLERANCES (UNLESS SPECIFIED)	
mm	INCH
4 PLACES ± ---	± ---
3 PLACES ± ---	± ---
2 PLACES ± ---	± ---
1 PLACE ± ---	± ---
ANGULAR ±1/2°	

DRAFT WHERE APPLICABLE MUST REMAIN WITHIN DIMENSIONS

DIMENSION STYLE	
IN/MM	
DRAWN BY	DATE
JAS	1987/06/01
CHECKED BY	DATE
MJM	1987/06/01
APPROVED BY	DATE
WAZ	1987/06/01
MATERIAL NO.	
SEE TABLE	

SCALE	DESIGN UNITS	THIRD ANGLE PROJECTION
4:1	INCH	
ASSEMBLY CONNECTOR BOX I.D. SINGLE ROW -.100 GRID		
MOLEX INCORPORATED		SHEET NO. 3 OF 3
DOCUMENT NO. SDA-70400-****		

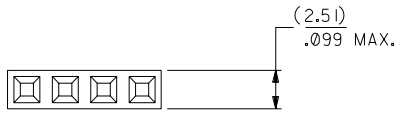
THIS DRAWING CONTAINS INFORMATION THAT IS PROPRIETARY TO MOLEX INCORPORATED AND SHOULD NOT BE USED WITHOUT WRITTEN PERMISSION

OPTION A

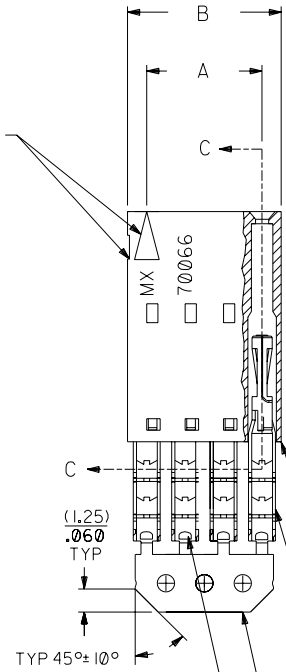
NOTES:

- 1) TO BE USED WITH (22) AWG. STRANDED WIRE WITH (1.35)/.053 DIA. MAX. INSULATION.
- 2) SEE CHART FOR CIRCUIT SIZES.
- 3) STANDARD PACKAGING PER PK-70873-0001. OPTIONAL PACKAGING MAY BE AVAILABLE, REQUEST DWG. PK-70400
- 4) PARTS STACKABLE END TO END AND SIDE BY SIDE ON (2.54)/.100 CENTERS.
- 5) REFER TO PRODUCT SPECIFICATION: PS-70400.
- 6) SEE DWG. SDA-70400-**** (SHT. 5) FOR OPTIONAL HOUSING DETAILS.
- 7) 4 CIRCUIT SHOWN.
- 8) TO MATE WITH MOLEX (2.54)/.100 CENTERLINE HEADERS.

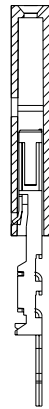
9) 2 CIRCUIT ASSEMBLIES SUPPLIED AS GROUPED PAIRS.



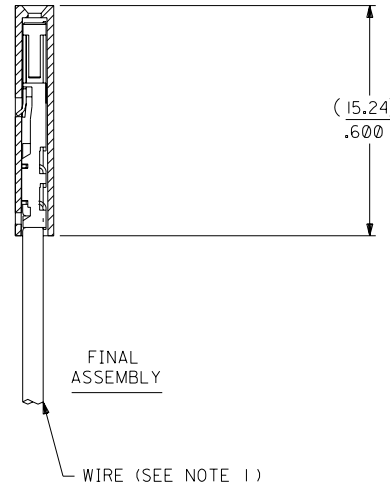
CIRCUIT NO. 1
SLOT OR ARROW



SECTION C-C



PRE-LOADED ASSEMBLY



FINAL ASSEMBLY

HOUSING PART NO. 70066-****
MATERIAL: G.F. POLYESTER, 94V-0

TERMINAL PART NO. 70028-****
MATERIAL: PHOSPHOR BRONZE
PLATING PER ES-88-***

TIN - .000150 MIN. TIN OVER
.000050 MIN. NICKEL PLATE.

I.D. SLOT CODE TO WIRE GAUGE CHART	
I.D. SLOT CODE	WIRE GAUGE
D	22 AWG.

PLATING CODE (STRIPE ON CARRIER STRIP)	
PLATING	COLOR
TIN	NONE

*THE PRIMARY SHIPPING CARTON WILL BE LABELED "COMPLIANT TO ROHS DIRECTIVE 2002/95/EC AND ELV ANNEX II OF DIRECTIVE 2000/53/EC". CARTONS WITHOUT THIS LABEL MAY CONTAIN PRODUCT WITH LEAD.

CKT. SIZE	DIMENSIONS (INCH)		EDP. NO.	ENG. NO.
	A	B		
2	(2.54) .100	(5.05) .199	14-56-6029	A-70400-3000
3	(5.08) .200	(7.59) .299	14-56-6039	A-70400-3001
4	(7.62) .300	(10.13) .399	14-56-6049	A-70400-3002
5	(10.16) .400	(12.67) .499	14-56-6059	A-70400-3003
6	(12.70) .500	(15.21) .599	14-56-6069	A-70400-3004
7	(15.24) .600	(17.75) .699	14-56-6079	A-70400-3005
8	(17.78) .700	(20.29) .799	14-56-6089	A-70400-3006
9	(20.32) .800	(22.83) .899	14-56-6099	A-70400-3007
10	(22.86) .900	(25.37) .999	14-56-6109	A-70400-3008
11	(25.54) 1.000	(27.91) 1.099	14-56-6119	A-70400-3009
12	(27.94) 1.100	(30.45) 1.199	14-56-6129	A-70400-3010
13	(30.48) 1.200	(32.99) 1.299	14-56-6139	A-70400-3011
14	(33.02) 1.300	(35.53) 1.399	14-56-6149	A-70400-3012
15	(35.56) 1.400	(38.07) 1.499	14-56-6159	A-70400-3013
16	(38.01) 1.500	(40.61) 1.599	14-56-6169	A-70400-3014
17	(40.64) 1.600	(43.15) 1.699	14-56-6179	A-70400-3015
18	(43.18) 1.700	(45.69) 1.799	14-56-6189	A-70400-3016
19	(45.72) 1.800	(48.23) 1.899	14-56-6199	A-70400-3017
20	(48.26) 1.900	(50.77) 1.999	14-56-6209	A-70400-3018
21	(50.80) 2.000	(53.31) 2.099	14-56-6219	A-70400-3019
22	(53.34) 2.100	(55.85) 2.199	14-56-6229	A-70400-3020
23	(55.88) 2.200	(58.39) 2.299	14-56-6239	A-70400-3021
24	(58.42) 2.300	(60.93) 2.399	14-56-6249	A-70400-3022
25	(60.96) 2.400	(63.47) 2.499	14-56-6259	A-70400-3023

DIMENSIONS SHOWN (METRIC) INCH		UNLESS OTHERWISE SPECIFIED TOLERANCES: ANGULAR ± 1/2°		MFG. SH. REV.	
E	LEAD FREE UCP2004-1769 RWHITE 04/03/22	B	REVISIONS REVISE PER ECR #U80110 2/3/88 MJM	REVISE ONLY ON CAD SYSTEM	
D	164 PLATING WAS 102 PER ECR # U30941 07/07/93 REED	A	RELEASE FOR PROD. PER ERO NO. 25421 10-26-87 AAB	TITLE ASSEMBLY, SL CONNECTOR (SINGLE ROW- (2.54)/.100 GRID)	
LTR.	REVISIONS	LTR.	REVISIONS	PART NO. SDA-70400-3000-3023	
DRWG. BY: AAB		CHK'D. BY: WAZ		MOLEX INCORPORATED LITSE, ILL. 60532 U.S.A.	
APP'D. BY:		SCALE: 4:1		SHEET NO. 10/26/87	
FILE NAME: 74003000.DGN		THIS DRAWING CONTAINS INFORMATION THAT IS PROPRIETARY TO MOLEX INC. AND SHOULD NOT BE USED WITHOUT WRITTEN PERMISSION.		DIV. DA	