

**PLEASE CHECK WWW.MOLEX.COM FOR LATEST PART INFORMATION**

**Part Number:** **0877057406**  
**Status:** **Active**  
**Description:** 1.00mm (.039") Pitch DDR-II DIMM 240 Circuits Socket, Vertical, 1.8 Voltage, 2.30mm (.091") Tail Length, White Latches, Nylon 4/6 Glass-filled, Black Housing, Gold (Au) Flash, Beveled Metal Pins Width 3.00mm (.118"), Lead Free

**Documents:**

[3D Model](#) [Product Specification PS-87705-801 \(PDF\)](#)  
[Drawing \(PDF\)](#) [RoHS Certificate of Compliance \(PDF\)](#)

**Agency Certification**

CSA LR19980  
 UL E29179

**General**

Product Family Memory Module Sockets  
 Series **87705**  
 Comments <LI>White Latches <LI>Insertion Force: 10Kg (98N)  
 Max. <LI>Beveled Metal Pin Width: 3.00mm (.118")  
 Component Type Socket  
 JEDEC Outline MO-237  
 Product Name DDR2 DIMM

**Physical**

Circuits (Loaded) 240  
 Durability (mating cycles max) 25  
 Entry Angle Vertical (Top Entry)  
 Flammability 94V-0  
 Keying to Mating Part Yes  
 Material - Plating Mating Gold  
 Material - Plating Termination Tin  
 PC Tail Length (in) 0.091 In  
 PC Tail Length (mm) 2.30 mm  
 PCB Retention Yes  
 PCB Thickness Recommended (in) 0.062 In  
 PCB Thickness Recommended (mm) 1.60 mm  
 Packaging Type Tray  
 Pitch - Mating Interface (in) 0.039 In  
 Pitch - Mating Interface (mm) 1.00 mm  
 Plating min: Mating (µin) 30  
 Plating min: Mating (µm) 0.76  
 Temperature Range - Operating -10°C to +85°C  
 Termination Interface: Style Through Hole

**Electrical**

Current - Maximum per Contact 0.5A  
 Voltage - Maximum 30V  
 Voltage Key 1.8V, Center

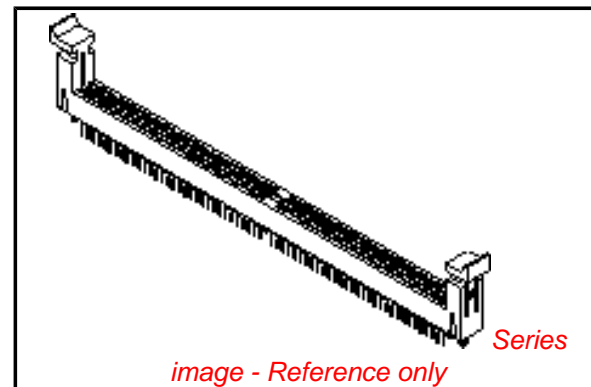
**Solder Process Data**

Lead-free Process Capability Wave Capable (TH only)  
 Process Temperature max. C 260

**Material Info**

**Reference - Drawing Numbers**

Product Specification PS-87705-801



**EU RoHS**

**ELV and RoHS Compliant**  
**REACH SVHC**  
 Not Reviewed  
**Halogen-Free Status**  
**Not Reviewed**

**China RoHS**



**Need more information on product environmental compliance?**

Email [productcompliance@molex.com](mailto:productcompliance@molex.com)  
 For a multiple part number RoHS Certificate of Compliance, [click here](#)

Please visit the [Contact Us](#) section for any non-product compliance questions.

**Search Parts in this Series**

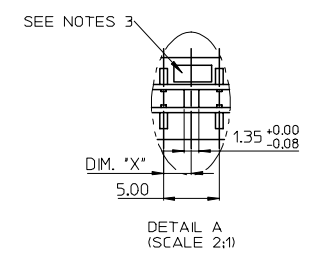
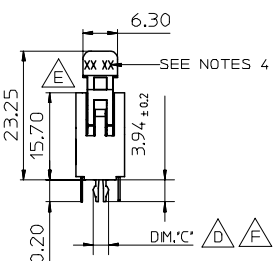
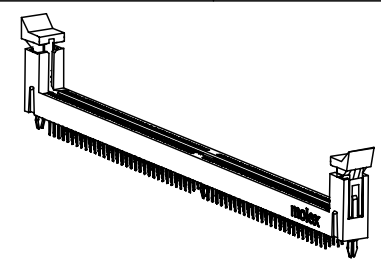
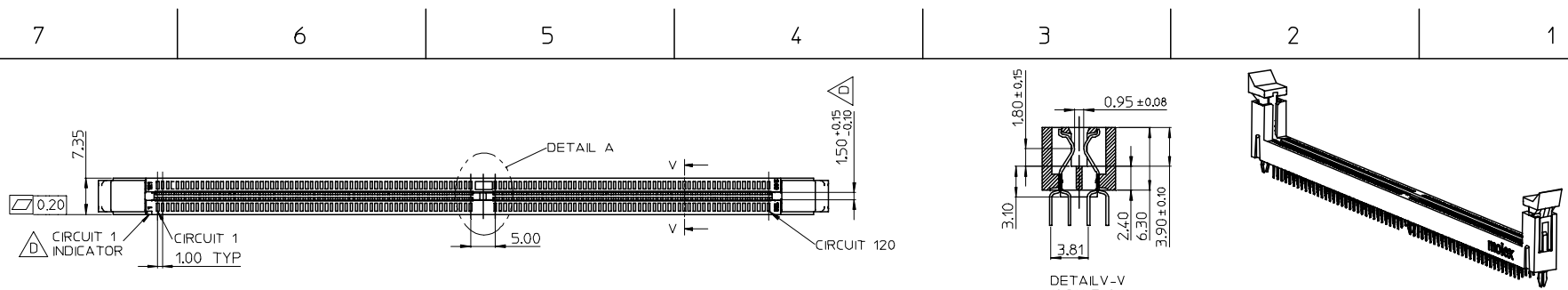
87705Series

**Mates With**

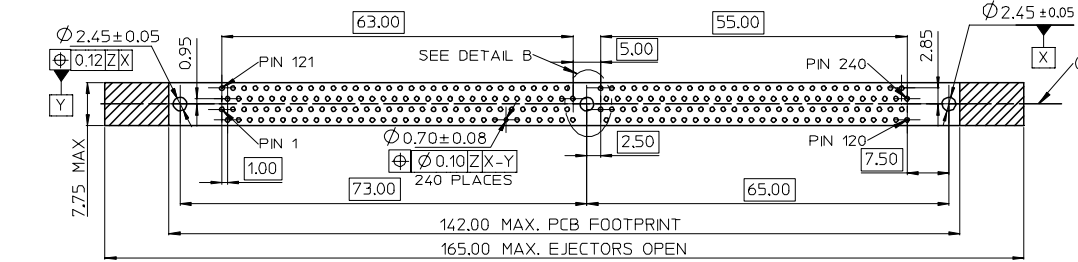
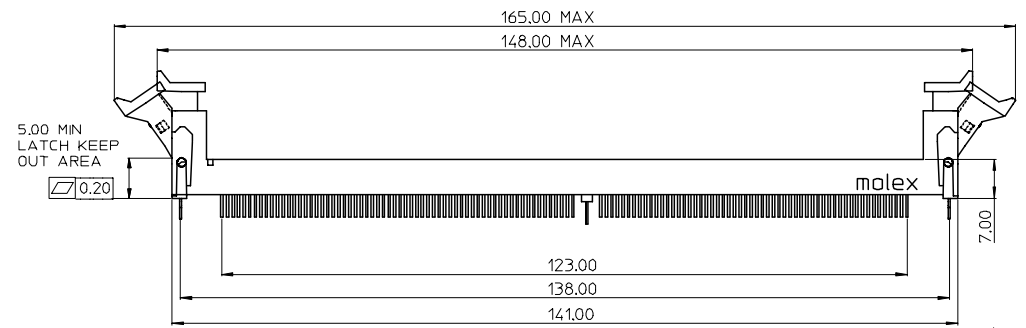
JEDEC standard 1.27mm modules

This document was generated on 04/13/2010

**PLEASE CHECK [WWW.MOLEX.COM](http://WWW.MOLEX.COM) FOR LATEST PART INFORMATION**

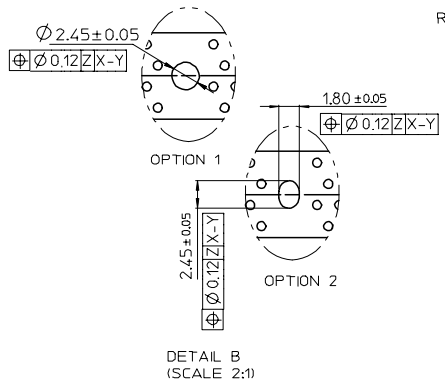


| KEY LOCATION | VOLTAGE | DIM.'X' |
|--------------|---------|---------|
| LEFT         | 2.5V    | 1.50    |
| CENTER       | 1.8V    | 2.50    |



- NOTES:
- MATERIAL:  
HOUSING: SEE TABLE ,GLASS FIBER FILLED UL94V-0,COLOR:SEE TABLE.  
LATCH: POLYAMIDE, GLASS FIBER FILLED UL94V-0. COLOR : SEE TABLE.  
FORKLOCK: BRASS  
TERMINAL: SEE TABLE.
  - PLATING:  
TERMINAL  
CONTACT AREA: SEE TABLE.  
SOLDER TAIL: 100 MICRONCH MIN. TIN.  
UNDER PLATING: NICKEL OVERALL.
  - FORKLOCK  
SOLDER AREA: 100 MICRONCH MIN. TIN.  
UNDER PLATING: NICKEL OVERALL.
  - VOLTAGE: SEE TABLE
  - DATE CODE:XXXXYYWW
  - PRODUCT SPECIFICATION REFER TO PS-87705-801.
  - PACKAGING SPECIFICATION REFER TO PK-87705-801.
  - TEST SUMMARY:REFER TO TS-87705-801.
  - LEAD FREE AND ROHS COMPLIANT PRODUCT.

RECOMMENDED PCB LAYOUT  
CONNECTOR SIDE



| REV                | DESCRIPTION | QUALITY SYMBOLS | GENERAL TOLERANCES (UNLESS SPECIFIED)                      |        | DIMENSION STYLE |              | SCALE   | DESIGN UNITS | THIRD ANGLE PROJECTION                       |  |
|--------------------|-------------|-----------------|--|--------|-----------------|--------------|---|--------------|--|--|
|                    |             |                 | mm   | INCH   | MM ONLY         | 1:1          | METRIC  | ⊕            | □  |  |
| PER EWR2007-0102   |             |                 | 4 PLACES   | ± ---  | ± ---           | DRAWN BY     | DATE  | TITLE        | 1.0MM PITCH DDR II<br>240 CKTS WITH FORKLOCK |  |
| EC NO: SH2007-0496 |             |                 | 3 PLACES   | ± ---  | ± ---           | TOM          | 2004/07/19  |              |  |  |
| DRWN:ALL IN        | 2007/03/20  |                 | 2 PLACES   | ± 0.25 | ± ---           | CHECKED BY   | DATE  |              | MOLEX MOLEX INCORPORATED                     |  |
| CHKD:              | 2007/03/21  |                 | 1 PLACE  | ± 0.25 | ± ---           | ALL IN       | 2004/07/19  |              |  |  |
| APPR:WWSCHANG      | 2007/03/22  |                 | ANGULAR ± 3 °  |        |                 | APPROVED BY  | DATE  |              | MOLEX MOLEX INCORPORATED                     |  |
|                    |             |                 | DRAFT WHERE APPLICABLE<br>MUST REMAIN<br>WITHIN DIMENSIONS |        |                 | WWSCHANG     | 2004/07/19  |              |  |  |
|                    |             |                 |  |        |                 | MATERIAL NO. | DOCUMENT NO.  |              | SHEET NO.<br>1 OF 10                         |  |
|                    |             |                 |  |        |                 | SEE TABLE    | SD-87705-801  |              |  |  |
|                    |             |                 |  |        |                 | SIZE         | THIS DRAWING CONTAINS INFORMATION THAT IS PROPRIETARY TO MOLEX INCORPORATED AND SHOULD NOT BE USED WITHOUT WRITTEN PERMISSION |              |  |  |

7                          6                          5                          4                          3                          2                          1

E

D

C

B

A









E

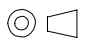

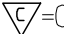
D

C

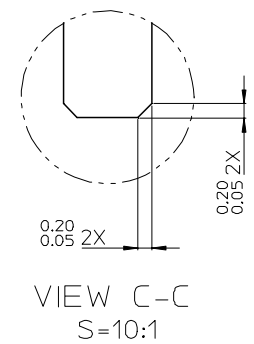
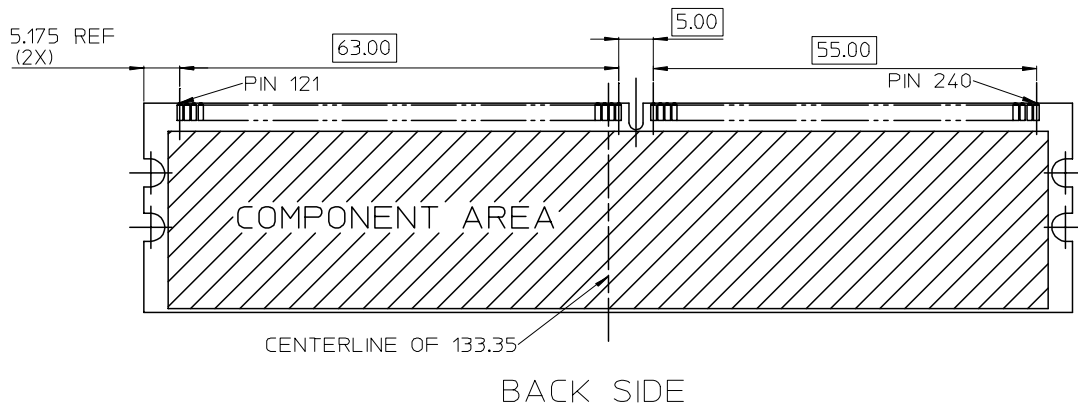
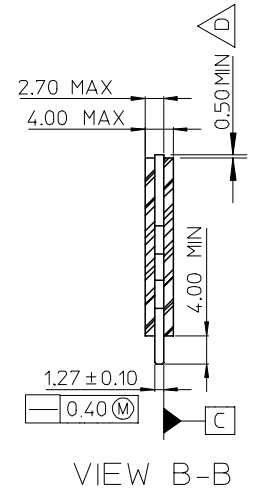
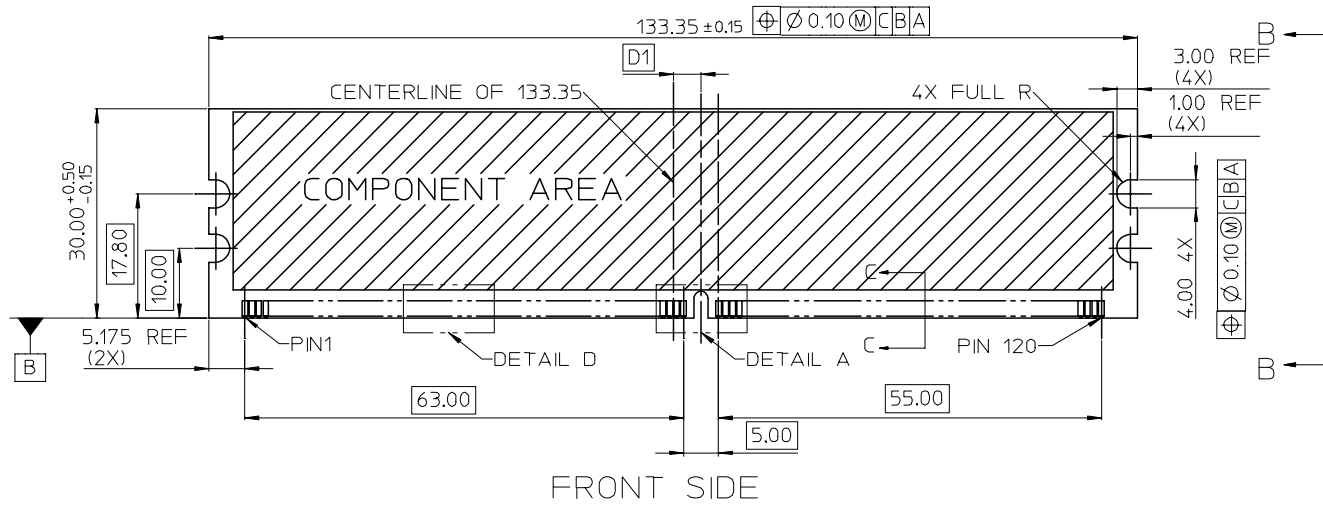
B

A

| MOLEX P/N  | HOUSING MATERIAL | HOUSING COLOR | LATCH COLOR | TERMINAL MATERIAL | CONTACT PLATING   | SOLDERTAIL LENGTH "B" | FORKLOCK WIDTH "C"  | VOLTAGE |
|--|------------------|---------------|-------------|-------------------|-------------------|-----------------------|---|---------|
| 87705-7900   | NYLON66          | BLACK         | WHITE       | PHOSPHOR BROZNE   | GOLD FLASH        | 2.54                  | 2.55±0.05   | 1.8     |
| 87705-7901   |                  |               |             |                   | 15 MICROINCH GOLD |                       |   |         |
| 87705-7902   |                  |               |             |                   | 30 MICROINCH GOLD |                       |   |         |
| 87705-7903   | NYLON46          | BLACK         | WHITE       | PHOSPHOR BROZNE   | GOLD FLASH        | 2.54                  | 2.55±0.05   | 1.8     |
| 87705-7904   |                  |               |             |                   | 15 MICROINCH GOLD |                       |   |         |
| 87705-7905   |                  |               |             |                   | 30 MICROINCH GOLD |                       |   |         |
|  87705-7008 | NYLON66          | BLACK         | WHITE       | PHOSPHOR BROZNE   | 15 MICROINCH GOLD | 3.18                  |  | 1.8     |
|  87705-7028 |                  | BLUE (287U)   |             |                   |                   |                       |   |         |
|  87705-7058 |                  | BLACK         | BLACK       |                   |                   |                       |   |         |
|  87705-7408 | NYLON46          | BLACK         | WHITE       | PHOSPHOR BROZNE   | 15 MICROINCH GOLD | 3.18                  |  | 1.8     |
|  87705-7428 |                  | BLUE (287U)   |             |                   |                   |                       |   |         |
|  87705-7458 |                  | BLACK         | BLACK       |                   |                   |                       |   |         |

|  |                    |   |  |       |  |                    |   |                        |  |  |
|--|--------------------|---|--|-------|--|--------------------|---|------------------------|--|--|
| SEE SHEET 1<br>EC NO: SH2007-0496<br>TDRWN: ALL IN 2007/03/20<br>CHKD: 2007/03/21<br>APPR: WWSCHANG 2007/03/22 | DESCRIPTION<br>REV | QUALITY SYMBOLS   | GENERAL TOLERANCES (UNLESS SPECIFIED)                      |       | DIMENSION STYLE<br>MM ONLY   |                    | SCALE<br>1:1  | DESIGN UNITS<br>METRIC |  THIRD ANGLE PROJECTION |  |
|  |                    |  = 0 | mm   | INCH  | DRAWN BY<br>TOM  | DATE<br>2004/07/19 | TITLE<br>1.0MM PITCH DDR II<br>240 CKTS WITH FORKLOCK |                        |  |  |
|  |                    |  = 0 | 4 PLACES ± ---   | ± --- | CHECKED BY<br>ALL IN   | DATE<br>2004/07/19 | MOLEX MOLEX INCORPORATED                              |                        |  |  |
|  |                    |   | 3 PLACES ± ---   | ± --- | APPROVED BY<br>WWSCHANG  | DATE<br>2004/07/19 |   |                        |  |  |
|  |                    |   | 2 PLACES ± 0.25  | ± --- | MATERIAL NO.<br>SEE TABLE  |                    | DOCUMENT NO.<br>SD-87705-801                          | SHEET NO.<br>10 OF 10  |  |  |
|  | 1 PLACE ± 0.25     | ± ---   | DRAFT WHERE APPLICABLE<br>MUST REMAIN<br>WITHIN DIMENSIONS |       | THIS DRAWING CONTAINS INFORMATION THAT IS PROPRIETARY TO MOLEX<br>INCORPORATED AND SHOULD NOT BE USED WITHOUT WRITTEN PERMISSION |                    |   |                        |  |  |

6                          5                          4                          3                          2                          1

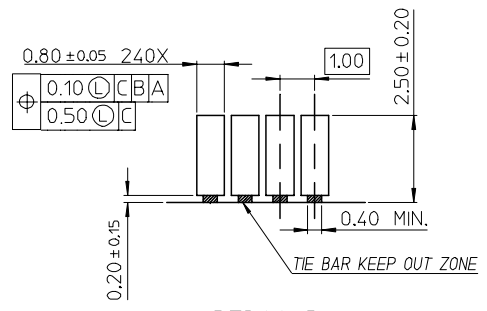


|  |                    |  |                                       |                       |                            |                         |  |                        |                        |  |  |
|--|--------------------|--|---------------------------------------|-----------------------|----------------------------|-------------------------|--|------------------------|------------------------|--|--|
| SEE SHEET 1<br>EC NO: SH2007-0496<br>TDRWN: ALL IN 2007/03/20<br>CHKD: 2007/03/21<br>APPR: WWSCHANG 2007/03/22 | DESCRIPTION<br>REV | QUALITY SYMBOLS  | GENERAL TOLERANCES (UNLESS SPECIFIED) |                       | DIMENSION STYLE<br>MM ONLY |                         | SCALE<br>1:1   | DESIGN UNITS<br>METRIC | THIRD ANGLE PROJECTION |  |  |
|  |                    | $\nabla = 0$<br>$\nabla C = 0$                             | mm                                    | INCH                  | DRAWN BY<br>TOM            | DATE<br>2004/07/19      | TITLE<br>1.0MM PITCH DDR II<br>240 CKTS WITH FORKLICK  |                        |                        |  |  |
|  |                    | 4 PLACES ± --- ± ---                                       | 3 PLACES ± --- ± ---                  | 2 PLACES ± 0.25 ± --- | 1 PLACE ± 0.25 ± ---       | CHECKED BY<br>ALL IN    | DATE<br>2004/07/19   | MOLEX INCORPORATED     |                        |  |  |
|  |                    | ANGULAR ± 3 °  |                                       |                       |                            | APPROVED BY<br>WWSCHANG | DATE<br>2004/07/19   |                        |                        |  |  |
|  |                    | DRAFT WHERE APPLICABLE<br>MUST REMAIN<br>WITHIN DIMENSIONS |                                       |                       |                            | SIZE<br>A4              | THIS DRAWING CONTAINS INFORMATION THAT IS PROPRIETARY TO MOLEX<br>INCORPORATED AND SHOULD NOT BE USED WITHOUT WRITTEN PERMISSION |                        |                        |  |  |

7 6 5 4 3 2 1

E

E



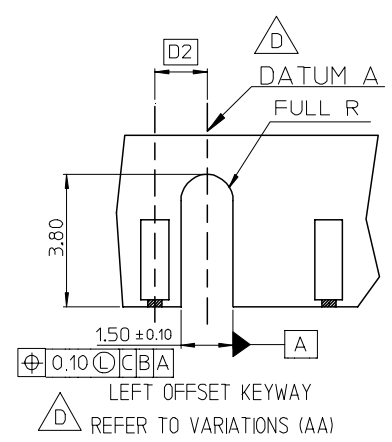
DETAIL D

△ D VARIATIONS

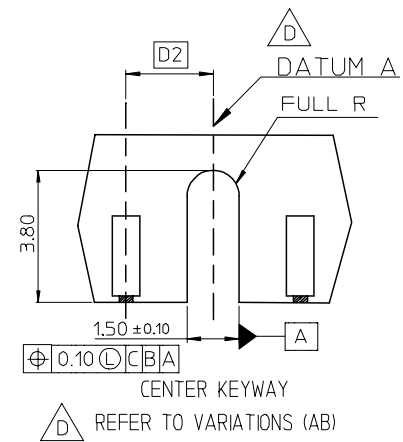
| VAR SYMBOL \ VAR | AA         | AB         | AC         |
|------------------|------------|------------|------------|
| D1               | 3.00 BASIC | 4.00 BASIC | 5.00 BASIC |
| D2               | 1.50 BASIC | 2.50 BASIC | 3.50 BASIC |

D

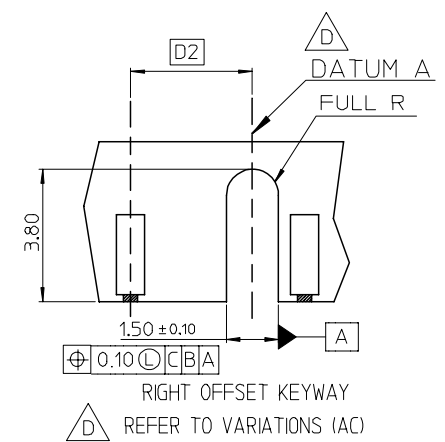
D



LEFT OFFSET KEYWAY  
△ D REFER TO VARIATIONS (AA)



CENTER KEYWAY  
△ D REFER TO VARIATIONS (AB)



RIGHT OFFSET KEYWAY  
△ D REFER TO VARIATIONS (AC)

DETAIL A S=5:1  
CENTER KEY ZONE

C

C

B

B





THIS DESIGN IS BASED ON DESIGN OBJECTIVES AND IS STRICTLY TENTATIVE. IT MAY CHANGE BASED ON RESULTS OF ADDITIONS DESIGN REVIEWS AND VERIFICATIONS.


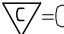

A

A

| SEE SHEET 1<br>EC NO: SH2007-0496<br>TDRWN: ALL IN 2007/03/20<br>CHKD: 2007/03/21<br>APPR: WWSCHANG 2007/03/22 | QUALITY SYMBOLS                                      | GENERAL TOLERANCES (UNLESS SPECIFIED)   | DIMENSION STYLE | SCALE   | DESIGN UNITS | THIRD ANGLE PROJECTION |       |       |          |       |       |          |        |       |         |        |       |         |  |        |  |
|--|--|---|-----------------|---|--------------|------------------------|-------|-------|----------|-------|-------|----------|--------|-------|---------|--------|-------|---------|--|--------|--|
|  | ▽ = 0<br>∇ = 0                                       | <table border="1"> <thead> <tr> <th></th> <th>mm</th> <th>INCH</th> </tr> </thead> <tbody> <tr> <td>4 PLACES</td> <td>± ---</td> <td>± ---</td> </tr> <tr> <td>3 PLACES</td> <td>± ---</td> <td>± ---</td> </tr> <tr> <td>2 PLACES</td> <td>± 0.25</td> <td>± ---</td> </tr> <tr> <td>1 PLACE</td> <td>± 0.25</td> <td>± ---</td> </tr> </tbody> </table> |                 | mm  | INCH         | 4 PLACES               | ± --- | ± --- | 3 PLACES | ± --- | ± --- | 2 PLACES | ± 0.25 | ± --- | 1 PLACE | ± 0.25 | ± --- | MM ONLY |  | METRIC |  |
|  |  | mm  | INCH            |   |              |                        |       |       |          |       |       |          |        |       |         |        |       |         |  |        |  |
|  | 4 PLACES   | ± ---   | ± ---           |   |              |                        |       |       |          |       |       |          |        |       |         |        |       |         |  |        |  |
|  | 3 PLACES   | ± ---   | ± ---           |   |              |                        |       |       |          |       |       |          |        |       |         |        |       |         |  |        |  |
| 2 PLACES   | ± 0.25   | ± ---   |                 |   |              |                        |       |       |          |       |       |          |        |       |         |        |       |         |  |        |  |
| 1 PLACE  | ± 0.25   | ± ---   |                 |   |              |                        |       |       |          |       |       |          |        |       |         |        |       |         |  |        |  |
| DESCRIPTION  | ANGULAR ± 3 °  | DRAWN BY  | DATE            | TITLE   |              |                        |       |       |          |       |       |          |        |       |         |        |       |         |  |        |  |
| REV  | DRAFT WHERE APPLICABLE MUST REMAIN WITHIN DIMENSIONS | TOM   | 2004/07/19      | 1.0MM PITCH DDR II<br>240 CKTS WITH FORKLOCK  |              |                        |       |       |          |       |       |          |        |       |         |        |       |         |  |        |  |
|  |  | CHECKED BY  | DATE            | MOLEX INCORPORATED  |              |                        |       |       |          |       |       |          |        |       |         |        |       |         |  |        |  |
|  |  | ALL IN  | 2004/07/19      | DOCUMENT NO. SD-87705-801   |              |                        |       |       |          |       |       |          |        |       |         |        |       |         |  |        |  |
|  |  | APPROVED BY   | DATE            | SHEET NO. 3 OF 10   |              |                        |       |       |          |       |       |          |        |       |         |        |       |         |  |        |  |
|  |  | WWSCHANG  | 2004/07/19      | THIS DRAWING CONTAINS INFORMATION THAT IS PROPRIETARY TO MOLEX INCORPORATED AND SHOULD NOT BE USED WITHOUT WRITTEN PERMISSION |              |                        |       |       |          |       |       |          |        |       |         |        |       |         |  |        |  |

6 5 4 3 2 1





| 7          | 6                | 5   | 4           | 3                 | 2                 | 1                     |   |         |
|------------|------------------|---|-------------|-------------------|-------------------|-----------------------|---|---------|
| MOLEX P/N  | HOUSING MATERIAL | HOUSING COLOR   | LATCH COLOR | TERMINAL MATERIAL | CONTACT PLATING   | SOLDERTAIL LENGTH "B" | FORKLOCK WIDTH "C"  | VOLTAGE |
| 87705-7000 | NYLON66          | BLACK   | WHITE       | PHOSPHOR BROZNE   | GOLD FLASH        | 2.54                  |  <br>$2.70^{+0.10}_{-0.05}$ | 1.8     |
| 87705-7001 |                  |   |             |                   | 10 MICROINCH GOLD |                       |   |         |
| 87705-7002 |                  |   |             |                   | 15 MICROINCH GOLD |                       |   |         |
| 87705-7003 |                  |   |             |                   | GOLD FLASH        |                       |   |         |
| 87705-7004 |                  |   |             |                   | 10 MICROINCH GOLD |                       |   |         |
| 87705-7005 |                  |   |             |                   | 15 MICROINCH GOLD |                       |   |         |
| 87705-7010 |                  | WHITE   |             |                   | GOLD FLASH        | 2.54                  |   |         |
| 87705-7011 |                  |   |             |                   | 10 MICROINCH GOLD |                       |   |         |
| 87705-7012 |                  |   |             |                   | 15 MICROINCH GOLD |                       |   |         |
| 87705-7013 |                  |   |             |                   | GOLD FLASH        |                       |   |         |
| 87705-7014 |                  |   |             |                   | 10 MICROINCH GOLD |                       |   |         |
| 87705-7015 |                  |   |             |                   | 15 MICROINCH GOLD |                       |   |         |
| 87705-7020 |                  | BLUE (287U)   |             |                   | GOLD FLASH        | 2.54                  |   |         |
| 87705-7021 |                  |   |             |                   | 10 MICROINCH GOLD |                       |   |         |
| 87705-7022 |                  |   |             |                   | 15 MICROINCH GOLD |                       |   |         |
| 87705-7023 |                  |   |             |                   | GOLD FLASH        |                       |   |         |
| 87705-7024 |                  |   |             |                   | 10 MICROINCH GOLD |                       |   |         |
| 87705-7025 |                  |   |             |                   | 15 MICROINCH GOLD |                       |   |         |
| 87705-7030 |                  |  |             |                   | GOLD FLASH        | 2.54                  |   |         |
| 87705-7031 |                  |   |             |                   | 10 MICROINCH GOLD |                       |   |         |
| 87705-7032 |                  |   |             |                   | 15 MICROINCH GOLD |                       |   |         |
| 87705-7033 |                  |   |             |                   | GOLD FLASH        |                       |   |         |
| 87705-7034 |                  |   |             |                   | 10 MICROINCH GOLD |                       |   |         |
| 87705-7035 |                  |   |             |                   | 15 MICROINCH GOLD |                       |   |         |
| 87705-7040 |                  |  |             |                   | GOLD FLASH        | 2.54                  |   |         |
| 87705-7041 |                  |   |             |                   | 10 MICROINCH GOLD |                       |   |         |
| 87705-7042 |                  |   |             |                   | 15 MICROINCH GOLD |                       |   |         |
| 87705-7043 |                  |   |             |                   | GOLD FLASH        |                       |   |         |
| 87705-7044 |                  |   |             |                   | 10 MICROINCH GOLD |                       |   |         |
| 87705-7045 |                  |   |             |                   | 15 MICROINCH GOLD |                       |   |         |
| 87705-7060 | ORANGE (151C)    | GOLD FLASH  | 2.54        |                   |                   |                       |   |         |
| 87705-7061 |                  | 10 MICROINCH GOLD   |             |                   |                   |                       |   |         |
| 87705-7062 |                  | 15 MICROINCH GOLD   |             |                   |                   |                       |   |         |
| 87705-7063 |                  | GOLD FLASH  |             |                   |                   |                       |   |         |
| 87705-7064 |                  | 10 MICROINCH GOLD   |             |                   |                   |                       |   |         |
| 87705-7065 |                  | 15 MICROINCH GOLD   |             |                   |                   |                       |   |         |
| 87705-7066 |                  | GOLD FLASH  | 2.30        |                   |                   |                       |   |         |
| 87705-7067 |                  |   | 30u"Gold    | 2.54              |                   |                       |   |         |


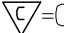

|  |  |                                       |        |  |                          |              |  |  |  |  |
|--|--|---------------------------------------|--------|--|--------------------------|--------------|--|--|--|--|
| SEE SHEET 1<br>EC NO: SH2007-0496<br>TDRWN: ALL IN 2007/03/20<br>CHKD: 2007/03/21<br>APPR: WWSCHANG 2007/03/22 | DESCRIPTION<br>QUALITY SYMBOLS<br> = 0<br> = 0 | GENERAL TOLERANCES (UNLESS SPECIFIED) |        | DIMENSION STYLE<br>MM ONLY   |                          | SCALE<br>1:1 | DESIGN UNITS<br>METRIC                       |  THIRD ANGLE PROJECTION |  |  |
|  |  |                                       |        |  |                          |              |  |  |  |  |
|  |  | 4 PLACES                              | ± ---  | ± ---  | DRAWN BY                 | DATE         | TITLE  |  |  |  |
|  |  | 3 PLACES                              | ± ---  | ± ---  | TOM                      | 2004/07/19   | 1.0MM PITCH DDR II<br>240 CKTS WITH FORKLOCK |  |  |  |
|  |  | 2 PLACES                              | ± 0.25 | ± ---  | CHECKED BY               | DATE         |  |  |  |  |
| 1 PLACE  | ± 0.25   | ± ---                                 | ALL IN | 2004/07/19   |                          |              |  |  |  |  |
| ANGULAR ± 3 °  |  | APPROVED BY                           |        | DATE   | MOLEX MOLEX INCORPORATED |              |  |  |  |  |
|  |  | MATERIAL NO.                          |        | 2004/07/19   | DOCUMENT NO.             |              | SHEET NO.                                    |  |  |  |
| DRAFT WHERE APPLICABLE<br>MUST REMAIN<br>WITHIN DIMENSIONS   |  | SEE TABLE                             |        | SD-87705-801   |                          | 4 OF 10      |  |  |  |  |
|  |  | SIZE                                  |        | THIS DRAWING CONTAINS INFORMATION THAT IS PROPRIETARY TO MOLEX<br>INCORPORATED AND SHOULD NOT BE USED WITHOUT WRITTEN PERMISSION |                          |              |  |  |  |  |

7 6 5 4 3 2 1

E  
D  
C  
B  
A

E  
D  
C  
B  
A

| MOLEX P/N  | HOUSING MATERIAL  | HOUSING COLOR   | LATCH COLOR | TERMINAL MATERIAL | CONTACT PLATING   | SOLDERTAIL LENGTH "B" | FORKLOCK WIDTH "C"  | VOLTAGE |
|------------|-------------------|---|-------------|-------------------|-------------------|-----------------------|---|---------|
| 87705-7100 | NYLON66           | BLACK   | WHITE       | BRASS             | GOLD FLASH        | 2.54                  |  <br>$2.70^{+0.10}_{-0.05}$ | 1.8     |
| 87705-7101 |                   |   |             |                   | 10 MICROINCH GOLD |                       |   |         |
| 87705-7102 |                   |   |             |                   | 15 MICROINCH GOLD |                       |   |         |
| 87705-7103 |                   |   |             |                   | GOLD FLASH        |                       |   |         |
| 87705-7104 |                   |   |             |                   | 10 MICROINCH GOLD |                       |   |         |
| 87705-7105 |                   |   |             |                   | 15 MICROINCH GOLD |                       |   |         |
| 87705-7110 |                   | WHITE   |             |                   | GOLD FLASH        | 2.54                  |   |         |
| 87705-7111 |                   |   |             |                   | 10 MICROINCH GOLD |                       |   |         |
| 87705-7112 |                   |   |             |                   | 15 MICROINCH GOLD |                       |   |         |
| 87705-7113 |                   |   |             |                   | GOLD FLASH        |                       |   |         |
| 87705-7114 |                   |   |             |                   | 10 MICROINCH GOLD |                       |   |         |
| 87705-7115 |                   |   |             |                   | 15 MICROINCH GOLD |                       |   |         |
| 87705-7120 |                   | BLUE (287U)   |             |                   | GOLD FLASH        | 2.54                  |   |         |
| 87705-7121 |                   |   |             |                   | 10 MICROINCH GOLD |                       |   |         |
| 87705-7122 |                   |   |             |                   | 15 MICROINCH GOLD |                       |   |         |
| 87705-7123 |                   |   |             |                   | GOLD FLASH        |                       |   |         |
| 87705-7124 |                   |   |             |                   | 10 MICROINCH GOLD |                       |   |         |
| 87705-7125 |                   |   |             |                   | 15 MICROINCH GOLD |                       |   |         |
| 87705-7130 |                   | <br>GREEN (348C)   |             |                   | GOLD FLASH        | 2.54                  |   |         |
| 87705-7131 |                   |   |             |                   | 10 MICROINCH GOLD |                       |   |         |
| 87705-7132 |                   |   |             |                   | 15 MICROINCH GOLD |                       |   |         |
| 87705-7133 |                   |   |             |                   | GOLD FLASH        |                       |   |         |
| 87705-7134 |                   |   |             |                   | 10 MICROINCH GOLD |                       |   |         |
| 87705-7135 |                   |   |             |                   | 15 MICROINCH GOLD |                       |   |         |
| 87705-7140 |                   | <br>PURPLE (2736U) |             |                   | GOLD FLASH        | 2.54                  |   |         |
| 87705-7141 |                   |   |             |                   | 10 MICROINCH GOLD |                       |   |         |
| 87705-7142 |                   |   |             |                   | 15 MICROINCH GOLD |                       |   |         |
| 87705-7143 |                   |   |             |                   | GOLD FLASH        |                       |   |         |
| 87705-7144 | 10 MICROINCH GOLD |   |             |                   |                   |                       |   |         |
| 87705-7145 | 15 MICROINCH GOLD |   |             |                   |                   |                       |   |         |

| SEE SHEET 1<br>EC NO: SH2007-0496<br>TDRWN: ALL IN 2007/03/20<br>CHKD: 2007/03/21<br>APPR: WWSCHANG 2007/03/22 | DESCRIPTION<br>REV  | QUALITY SYMBOLS   | GENERAL TOLERANCES (UNLESS SPECIFIED)   | DIMENSION STYLE   | SCALE     | DESIGN UNITS | THIRD ANGLE PROJECTION |  |            |          |       |        |            |        |             |         |        |          |            |     |        |   |
|--|---|---|---|---|-----------|--------------|------------------------|--|------------|----------|-------|--------|------------|--------|-------------|---------|--------|----------|------------|-----|--------|---|
|  |   |  = 0<br> = 0  | <table border="1"> <tr> <th></th> <th>mm</th> <th>INCH</th> </tr> <tr> <td>4 PLACES</td> <td>± ---</td> <td>± ---</td> </tr> <tr> <td>3 PLACES</td> <td>± ---</td> <td>± ---</td> </tr> <tr> <td>2 PLACES</td> <td>± 0.25</td> <td>± ---</td> </tr> <tr> <td>1 PLACE</td> <td>± 0.25</td> <td>± ---</td> </tr> </table> |   | mm        | INCH         | 4 PLACES               | ± ---  | ± ---      | 3 PLACES | ± --- | ± ---  | 2 PLACES   | ± 0.25 | ± ---       | 1 PLACE | ± 0.25 | ± ---    | MM ONLY    | 1:1 | METRIC |  |
|  |   |   | mm  | INCH  |           |              |                        |  |            |          |       |        |            |        |             |         |        |          |            |     |        |   |
|  |   | 4 PLACES  | ± ---   | ± ---   |           |              |                        |  |            |          |       |        |            |        |             |         |        |          |            |     |        |   |
|  |   | 3 PLACES  | ± ---   | ± ---   |           |              |                        |  |            |          |       |        |            |        |             |         |        |          |            |     |        |   |
| 2 PLACES   | ± 0.25  | ± ---   |   |   |           |              |                        |  |            |          |       |        |            |        |             |         |        |          |            |     |        |   |
| 1 PLACE  | ± 0.25  | ± ---   |   |   |           |              |                        |  |            |          |       |        |            |        |             |         |        |          |            |     |        |   |
|  | ANGULAR ± 3 °   | <table border="1"> <tr> <td>DRAWN BY</td> <td>DATE</td> <td>TITLE</td> </tr> <tr> <td>TOM</td> <td>2004/07/19</td> <td>1.0MM PITCH DDR II<br/>240 CKTS WITH FORKLOCK</td> </tr> <tr> <td>CHECKED BY</td> <td>DATE</td> <td></td> </tr> <tr> <td>ALL IN</td> <td>2004/07/19</td> <td></td> </tr> <tr> <td>APPROVED BY</td> <td>DATE</td> <td></td> </tr> <tr> <td>WWSCHANG</td> <td>2004/07/19</td> <td></td> </tr> </table> | DRAWN BY  | DATE  | TITLE     | TOM          | 2004/07/19             | 1.0MM PITCH DDR II<br>240 CKTS WITH FORKLOCK | CHECKED BY | DATE     |       | ALL IN | 2004/07/19 |        | APPROVED BY | DATE    |        | WWSCHANG | 2004/07/19 |     |        |   |
| DRAWN BY   | DATE  | TITLE   |   |   |           |              |                        |  |            |          |       |        |            |        |             |         |        |          |            |     |        |   |
| TOM  | 2004/07/19  | 1.0MM PITCH DDR II<br>240 CKTS WITH FORKLOCK  |   |   |           |              |                        |  |            |          |       |        |            |        |             |         |        |          |            |     |        |   |
| CHECKED BY   | DATE  |   |   |   |           |              |                        |  |            |          |       |        |            |        |             |         |        |          |            |     |        |   |
| ALL IN   | 2004/07/19  |   |   |   |           |              |                        |  |            |          |       |        |            |        |             |         |        |          |            |     |        |   |
| APPROVED BY  | DATE  |   |   |   |           |              |                        |  |            |          |       |        |            |        |             |         |        |          |            |     |        |   |
| WWSCHANG   | 2004/07/19  |   |   |   |           |              |                        |  |            |          |       |        |            |        |             |         |        |          |            |     |        |   |
|  | DRAFT WHERE APPLICABLE MUST REMAIN WITHIN DIMENSIONS  | <table border="1"> <tr> <td>MATERIAL NO.</td> <td>DOCUMENT NO.</td> <td>SHEET NO.</td> </tr> <tr> <td>SEE TABLE</td> <td>SD-87705-801</td> <td>5 OF 10</td> </tr> </table>  | MATERIAL NO.  | DOCUMENT NO.  | SHEET NO. | SEE TABLE    | SD-87705-801           | 5 OF 10                                      |            |          |       |        |            |        |             |         |        |          |            |     |        |   |
| MATERIAL NO.   | DOCUMENT NO.  | SHEET NO.   |   |   |           |              |                        |  |            |          |       |        |            |        |             |         |        |          |            |     |        |   |
| SEE TABLE  | SD-87705-801  | 5 OF 10   |   |   |           |              |                        |  |            |          |       |        |            |        |             |         |        |          |            |     |        |   |
|  |   | <table border="1"> <tr> <td>SIZE</td> <td colspan="2">THIS DRAWING CONTAINS INFORMATION THAT IS PROPRIETARY TO MOLEX INCORPORATED AND SHOULD NOT BE USED WITHOUT WRITTEN PERMISSION</td> </tr> <tr> <td>A/4</td> <td colspan="2"></td> </tr> </table>   | SIZE  | THIS DRAWING CONTAINS INFORMATION THAT IS PROPRIETARY TO MOLEX INCORPORATED AND SHOULD NOT BE USED WITHOUT WRITTEN PERMISSION |           | A/4          |                        |  |            |          |       |        |            |        |             |         |        |          |            |     |        |   |
| SIZE   | THIS DRAWING CONTAINS INFORMATION THAT IS PROPRIETARY TO MOLEX INCORPORATED AND SHOULD NOT BE USED WITHOUT WRITTEN PERMISSION |   |   |   |           |              |                        |  |            |          |       |        |            |        |             |         |        |          |            |     |        |   |
| A/4  |   |   |   |   |           |              |                        |  |            |          |       |        |            |        |             |         |        |          |            |     |        |   |

6 5 4 3 2 1



E

D

C

B

A

E

D

C

B

A

| MOLEX P/N  | HOUSING MATERIAL  | HOUSING COLOR | LATCH COLOR | TERMINAL MATERIAL | CONTACT PLATING   | SOLDERTAIL LENGTH "B" | FORKLOCK WIDTH "C"  | VOLTAGE |
|------------|-------------------|---------------|-------------|-------------------|-------------------|-----------------------|---|---------|
| 87705-7200 | NYLON66           | BLACK         | WHITE       | PHOSPHOR BROZNE   | GOLD FLASH        | 2.54                  | $\triangle_D \triangle_F$<br>2.70 <sup>+0.10</sup> <sub>-0.05</sub> | 2.5     |
| 87705-7201 |                   |               |             |                   | 10 MICROINCH GOLD |                       |   |         |
| 87705-7202 |                   |               |             |                   | 15 MICROINCH GOLD |                       |   |         |
| 87705-7203 |                   |               |             |                   | GOLD FLASH        |                       |   |         |
| 87705-7204 |                   |               |             |                   | 10 MICROINCH GOLD |                       |   |         |
| 87705-7205 |                   |               |             |                   | 15 MICROINCH GOLD |                       |   |         |
| 87705-7210 |                   | WHITE         |             |                   | GOLD FLASH        | 2.54                  |   |         |
| 87705-7211 |                   |               |             |                   | 10 MICROINCH GOLD |                       |   |         |
| 87705-7212 |                   |               |             |                   | 15 MICROINCH GOLD |                       |   |         |
| 87705-7213 |                   |               |             |                   | GOLD FLASH        |                       |   |         |
| 87705-7214 |                   |               |             |                   | 10 MICROINCH GOLD |                       |   |         |
| 87705-7215 |                   |               |             |                   | 15 MICROINCH GOLD |                       |   |         |
| 87705-7220 |                   | BLUE (287U)   |             |                   | GOLD FLASH        | 2.54                  |   |         |
| 87705-7221 |                   |               |             |                   | 10 MICROINCH GOLD |                       |   |         |
| 87705-7222 |                   |               |             |                   | 15 MICROINCH GOLD |                       |   |         |
| 87705-7223 |                   |               |             |                   | GOLD FLASH        |                       |   |         |
| 87705-7224 |                   |               |             |                   | 10 MICROINCH GOLD |                       |   |         |
| 87705-7225 |                   |               |             |                   | 15 MICROINCH GOLD |                       |   |         |
| 87705-7230 |                   | $\triangle_D$ |             |                   | GOLD FLASH        | 2.54                  |   |         |
| 87705-7231 |                   |               |             |                   | 10 MICROINCH GOLD |                       |   |         |
| 87705-7232 |                   |               |             |                   | 15 MICROINCH GOLD |                       |   |         |
| 87705-7233 |                   |               |             |                   | GOLD FLASH        |                       |   |         |
| 87705-7234 |                   |               |             |                   | 10 MICROINCH GOLD |                       |   |         |
| 87705-7235 |                   |               |             |                   | 15 MICROINCH GOLD |                       |   |         |
| 87705-7240 |                   | $\triangle_D$ |             |                   | GOLD FLASH        | 2.54                  |   |         |
| 87705-7241 |                   |               |             |                   | 10 MICROINCH GOLD |                       |   |         |
| 87705-7242 |                   |               |             |                   | 15 MICROINCH GOLD |                       |   |         |
| 87705-7243 |                   |               |             |                   | GOLD FLASH        |                       |   |         |
| 87705-7244 | 10 MICROINCH GOLD |               |             |                   |                   |                       |   |         |
| 87705-7245 | 15 MICROINCH GOLD |               |             |                   |                   |                       |   |         |

|  |  |                          |   |                 |   |              |                        |  |
|--|--|--------------------------|---|-----------------|---|--------------|------------------------|--|
| SEE SHEET 1<br>EC NO: SH2007-0496<br>TDRWN: ALL IN 2007/03/20<br>CHKD: 2007/03/21<br>APPR: WWSCHANG 2007/03/22 | DESCRIPTION<br>REV                                   | QUALITY SYMBOLS          | GENERAL TOLERANCES (UNLESS SPECIFIED)   | DIMENSION STYLE | SCALE   | DESIGN UNITS | THIRD ANGLE PROJECTION |  |
|  |  | $\blacktriangledown = 0$ | mm INCH   | MM ONLY         | 1:1   | METRIC       |                        |  |
|  |  | $\triangle = 0$          | 4 PLACES ± --- ± ---  | DRAWN BY DATE   | TITLE<br>1.0MM PITCH DDR II<br>240 CKTS WITH FORKLOCK |              |                        |  |
|  |  |                          | 3 PLACES ± --- ± ---  | TOM 2004/07/19  |   |              |                        |  |
|  |  |                          | 2 PLACES ± 0.25 ± ---   | CHECKED BY DATE | MOLEX INCORPORATED                                    |              |                        |  |
|  | 1 PLACE ± 0.25 ± ---                                 | ALL IN 2004/07/19        |   |                 |   |              |                        |  |
|  | ANGULAR ± 3 °  | APPROVED BY DATE         | DOCUMENT NO. SHEET NO.  |                 |   |              |                        |  |
|  |  | WWSCHANG 2004/07/19      |   |                 |   |              |                        |  |
|  | DRAFT WHERE APPLICABLE MUST REMAIN WITHIN DIMENSIONS | MATERIAL NO.             | SEE TABLE   |                 |   |              |                        |  |
|  |  | SIZE                     | THIS DRAWING CONTAINS INFORMATION THAT IS PROPRIETARY TO MOLEX INCORPORATED AND SHOULD NOT BE USED WITHOUT WRITTEN PERMISSION |                 |   |              |                        |  |

7 6 5 4 3 2 1

E

D

C

B

A

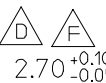
E

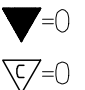
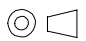

D

C

B

A

| MOLEX P/N  | HOUSING MATERIAL  | HOUSING COLOR     | LATCH COLOR | TERMINAL MATERIAL | CONTACT PLATING   | SOLDERTAIL LENGTH "B" | FORKLOCK WIDTH "C"  | VOLTAGE |
|------------|-------------------|-------------------|-------------|-------------------|-------------------|-----------------------|---|---------|
| 87705-7300 | NYLON66           | BLACK             | WHITE       | BRASS             | GOLD FLASH        | 2.54                  | <br>2.70 <sup>+0.10</sup> / <sub>-0.05</sub> | 2.5     |
| 87705-7301 |                   |                   |             |                   | 10 MICROINCH GOLD |                       |   |         |
| 87705-7302 |                   |                   |             |                   | 15 MICROINCH GOLD |                       |   |         |
| 87705-7303 |                   |                   |             |                   | GOLD FLASH        |                       |   |         |
| 87705-7304 |                   |                   |             |                   | 10 MICROINCH GOLD |                       |   |         |
| 87705-7305 |                   |                   |             |                   | 15 MICROINCH GOLD |                       |   |         |
| 87705-7310 |                   | GOLD FLASH        |             |                   | 3.00              |                       |   |         |
| 87705-7311 |                   | 10 MICROINCH GOLD |             |                   |                   |                       |   |         |
| 87705-7312 |                   | 15 MICROINCH GOLD |             |                   |                   |                       |   |         |
| 87705-7313 |                   | GOLD FLASH        |             |                   |                   |                       |   |         |
| 87705-7314 |                   | 10 MICROINCH GOLD |             |                   |                   |                       |   |         |
| 87705-7315 |                   | 15 MICROINCH GOLD |             |                   |                   |                       |   |         |
| 87705-7320 |                   | GOLD FLASH        | 2.54        |                   |                   |                       |   |         |
| 87705-7321 |                   | 10 MICROINCH GOLD |             |                   |                   |                       |   |         |
| 87705-7322 |                   | 15 MICROINCH GOLD |             |                   |                   |                       |   |         |
| 87705-7323 |                   | GOLD FLASH        |             |                   |                   |                       |   |         |
| 87705-7324 |                   | 10 MICROINCH GOLD |             |                   |                   |                       |   |         |
| 87705-7325 |                   | 15 MICROINCH GOLD |             |                   |                   |                       |   |         |
| 87705-7330 |                   | GOLD FLASH        | 3.00        |                   |                   |                       |   |         |
| 87705-7331 |                   | 10 MICROINCH GOLD |             |                   |                   |                       |   |         |
| 87705-7332 |                   | 15 MICROINCH GOLD |             |                   |                   |                       |   |         |
| 87705-7333 |                   | GOLD FLASH        |             |                   |                   |                       |   |         |
| 87705-7334 |                   | 10 MICROINCH GOLD |             |                   |                   |                       |   |         |
| 87705-7335 |                   | 15 MICROINCH GOLD |             |                   |                   |                       |   |         |
| 87705-7340 |                   | GOLD FLASH        | 2.54        |                   |                   |                       |   |         |
| 87705-7341 |                   | 10 MICROINCH GOLD |             |                   |                   |                       |   |         |
| 87705-7342 |                   | 15 MICROINCH GOLD |             |                   |                   |                       |   |         |
| 87705-7343 |                   | GOLD FLASH        |             |                   |                   |                       |   |         |
| 87705-7344 | 10 MICROINCH GOLD |                   |             |                   |                   |                       |   |         |
| 87705-7345 | 15 MICROINCH GOLD |                   |             |                   |                   |                       |   |         |

|  |  |                                       |  |                            |   |                              |  |  |  |  |
|--|--|---------------------------------------|--|----------------------------|---|------------------------------|--|--|--|--|
| SEE SHEET 1<br>EC NO: SH2007-0496<br>TDRWN: ALL IN 2007/03/20<br>CHKD: 2007/03/21<br>APPR: WWSCHANG 2007/03/22 | QUALITY SYMBOLS<br> | GENERAL TOLERANCES (UNLESS SPECIFIED) |  | DIMENSION STYLE<br>MM ONLY |   | SCALE<br>1:1                 | DESIGN UNITS<br>METRIC   |  THIRD ANGLE PROJECTION |  |  |
|  |  |                                       | mm   | INCH                       | DRAWN BY<br>TOM   | DATE<br>2004/07/19           | TITLE<br>1.0MM PITCH DDR II<br>240 CKTS WITH FORKLOCK  |  |  |  |
|  |  |                                       |  |                            | CHECKED BY<br>ALL IN  | DATE<br>2004/07/19           |  |  |  |  |
|  |  |                                       |  |                            | APPROVED BY<br>WWSCHANG   | DATE<br>2004/07/19           |  MOLEX INCORPORATED |  |  |  |
|  |  |                                       |  |                            | MATERIAL NO.<br>SEE TABLE   | DOCUMENT NO.<br>SD-87705-801 | SHEET NO.<br>7 OF 10   |  |  |  |
|  |  |                                       | DRAFT WHERE APPLICABLE MUST REMAIN WITHIN DIMENSIONS |                            | THIS DRAWING CONTAINS INFORMATION THAT IS PROPRIETARY TO MOLEX INCORPORATED AND SHOULD NOT BE USED WITHOUT WRITTEN PERMISSION |                              |  |  |  |  |

6 5 4 3 2 1

7 6 5 4 3 2 1

E

D

C

B

A



E


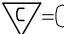


D

C








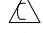
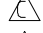

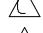
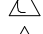
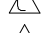
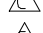
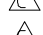
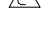
B


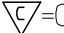


A

| MOLEX P/N  | HOUSING MATERIAL | HOUSING COLOR | LATCH COLOR | TERMINAL MATERIAL | CONTACT PLATING   | SOLDERTAIL LENGTH "B" | FORKLOCK WIDTH "C"  | VOLTAGE |       |  |  |  |  |
|------------|------------------|---------------|-------------|-------------------|-------------------|-----------------------|---|---------|-------|--|--|--|--|
| 87705-7420 | NYLON46          | BLUE (287U)   | WHITE       | PHOSPHOR BROZNE   | GOLD FLASH        | 2.54                  |  <br>2.70 <sup>+0.10</sup> <sub>-0.05</sub> | 1.8     |       |  |  |  |  |
| 87705-7421 |                  |               |             |                   | 10 MICROINCH GOLD |                       |   |         |       |  |  |  |  |
| 87705-7422 |                  |               |             |                   | 15 MICROINCH GOLD |                       |   |         |       |  |  |  |  |
| 87705-7423 |                  |               |             |                   | GOLD FLASH        | 3.00                  |   |         |       |  |  |  |  |
| 87705-7424 |                  |               |             |                   | 10 MICROINCH GOLD |                       |   |         |       |  |  |  |  |
| 87705-7425 |                  |               |             |                   | 15 MICROINCH GOLD |                       |   |         |       |  |  |  |  |
| 87705-7426 |                  | BLACK         | WHITE       | PHOSPHOR BROZNE   | GOLD FLASH        | 2.30                  |   |         |       |  |  |  |  |
| 87705-7407 |                  |               |             |                   | WHITE             | 30 MICROINCH GOLD     |   |         | 2.54  |  |  |  |  |
| 87705-7417 |                  |               |             |                   | BLUE (287U)       |                       |   |         |       |  |  |  |  |
| 87705-7427 |                  |               |             |                   | GREEN (348C)      |                       |   |         |       |  |  |  |  |
| 87705-7437 |                  |               |             |                   | PURPLE (2736U)    | BLACK                 |   |         | WHITE |  |  |  |  |
| 87705-7447 |                  |               |             |                   | BLACK             |                       |   |         |       |  |  |  |  |
| 87705-7457 |                  |               |             |                   | ORANGE (151C)     |                       |   |         |       |  |  |  |  |
| 87705-7467 |                  |               |             |                   |                   |                       |   |         |       |  |  |  |  |

|   |  |   |   |   |                                   |   |              |                        |  |
|---|--|---|---|---|-----------------------------------|---|--------------|------------------------|--|
| SEE SHEET 1<br>EC NO: SH2007-0496<br>TDRWN: ALL IN<br>CHKD:<br>APPR: WWSCHANG | 2007/03/20<br>2007/03/21<br>2007/03/22 | DESCRIPTION<br> = 0<br> = 0 | GENERAL TOLERANCES (UNLESS SPECIFIED)   |   | DIMENSION STYLE<br><b>MM ONLY</b> |   | SCALE<br>1:1 | DESIGN UNITS<br>METRIC |  THIRD ANGLE PROJECTION |
|   |  |   | 4 PLACES ± --- ± ---  | DRAWN BY<br>TOM   | DATE<br>2004/07/19                | TITLE<br>1.0MM PITCH DDR II<br>240 CKTS WITH FORKLOCK |              |                        |  |
|   |  |   | 3 PLACES ± --- ± ---  | CHECKED BY<br>ALL IN  | DATE<br>2004/07/19                |   |              |                        |  |
|   |  |   | 2 PLACES ± 0.25 ± ---   | APPROVED BY<br>WWSCHANG   | DATE<br>2004/07/19                | MOLEX INCORPORATED                                    |              |                        |  |
|   |  |   | 1 PLACE ± 0.25 ± ---  | MATERIAL NO.<br>SEE TABLE   |                                   |   |              |                        | DOCUMENT NO.<br>SD-87705-801   |
| DRAFT WHERE APPLICABLE<br>MUST REMAIN<br>WITHIN DIMENSIONS                    |  |   | SIZE<br> 4 | THIS DRAWING CONTAINS INFORMATION THAT IS PROPRIETARY TO MOLEX INCORPORATED AND SHOULD NOT BE USED WITHOUT WRITTEN PERMISSION |                                   |   |              |                        |  |

6 5 4 3 2 1

| MOLEX P/N   | HOUSING MATERIAL | HOUSING COLOR | LATCH COLOR | TERMINAL MATERIAL | CONTACT PLATING   | SOLDERTAIL LENGTH "B" | FORKLOCK WIDTH "C"   | VOLTAGE |
|---|------------------|---------------|-------------|-------------------|-------------------|-----------------------|--|---------|
| 87705-7050  | NYLON66          | BLACK         | BLACK       | PHOSPHOR BROZNE   | GOLD FLASH        | 2.54                  |   $2.70^{+0.10}_{-0.05}$ | 1.8     |
| 87705-7051  |                  |               |             |                   | 10 MICROINCH GOLD |                       |  |         |
| 87705-7052  |                  |               |             |                   | 15 MICROINCH GOLD |                       |  |         |
| 87705-7053  |                  |               |             |                   | GOLD FLASH        | 3.00                  |  |         |
| 87705-7054  |                  |               |             |                   | 10 MICROINCH GOLD |                       |  |         |
| 87705-7055  |                  |               |             |                   | 15 MICROINCH GOLD |                       |  |         |
| 87705-7056  |                  |               |             |                   | GOLD FLASH        | 2.30                  |  |         |
|  87705-7400   | NYLON46          | BLACK         | WHITE       |                   | GOLD FLASH        | 2.54                  |  |         |
|  87705-7401   |                  |               |             |                   | 10 MICROINCH GOLD |                       |  |         |
|  87705-7402   |                  |               |             |                   | 15 MICROINCH GOLD |                       |  |         |
|  87705-7403   |                  |               |             |                   | GOLD FLASH        | 3.00                  |  |         |
|  87705-7404   |                  |               |             |                   | 10 MICROINCH GOLD |                       |  |         |
|  87705-7405   |                  |               |             |                   | 15 MICROINCH GOLD |                       |  |         |
|  87705-7406   |                  |               | GOLD FLASH  |                   | 2.30              |                       |  |         |
|  87705-7450   |                  |               | BLACK       |                   | GOLD FLASH        | 2.54                  |  |         |
|  87705-7451   |                  |               |             |                   | 10 MICROINCH GOLD |                       |  |         |
|  87705-7452   |                  |               |             |                   | 15 MICROINCH GOLD |                       |  |         |
|  87705-7453   |                  |               |             |                   | GOLD FLASH        | 3.00                  |  |         |
|  87705-7454   |                  |               |             |                   | 10 MICROINCH GOLD |                       |  |         |
|  87705-7455  |                  |               |             |                   | 15 MICROINCH GOLD |                       |  |         |
|  87705-7456 |                  |               |             |                   | GOLD FLASH        | 2.30                  |  |         |

|   |   |                                       |               |                            |  |                    |  |  |  |  |
|---|---|---------------------------------------|---------------|----------------------------|--|--------------------|--|--|--|--|
| SEE SHEET 1<br>EC NO: SH2007-0496<br>T1: DRWN: ALL IN 2007/03/20<br>CHKD: 2007/03/21<br>APPR: WWSCHANG 2007/03/22 | QUALITY SYMBOLS<br> = 0<br> = 0 | GENERAL TOLERANCES (UNLESS SPECIFIED) |               | DIMENSION STYLE<br>MM ONLY |  | SCALE<br>1:1       | DESIGN UNITS<br>METRIC   |  THIRD ANGLE PROJECTION |  |  |
|   |   |                                       | mm            | INCH                       | DRAWN BY<br>TOM                                      | DATE<br>2004/07/19 | TITLE<br>1.0MM PITCH DDR II<br>240 CKTS WITH FORKLOCK  |  |  |  |
|   |   | 4 PLACES                              | ± ---         | ± ---                      | CHECKED BY<br>ALL IN                                 | DATE<br>2004/07/19 |  |  |  |  |
|   |   | 3 PLACES                              | ± ---         | ± ---                      | APPROVED BY<br>WWSCHANG                              | DATE<br>2004/07/19 |  MOLEX INCORPORATED<br>MATERIAL NO. SEE TABLE<br>DOCUMENT NO. SD-87705-801<br>SHEET NO. 9 OF 10 |  |  |  |
|   |   | 2 PLACES                              | ± 0.25        | ± ---                      | DRAFT WHERE APPLICABLE MUST REMAIN WITHIN DIMENSIONS |                    |  |  |  |  |
| 1 PLACE   | ± 0.25  | ± ---                                 | ANGULAR ± 3 ° |                            |  |                    |  |  |  |  |