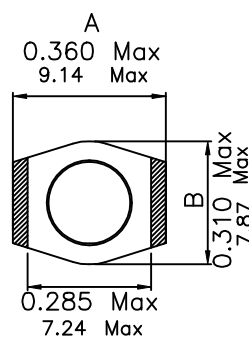
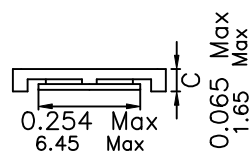


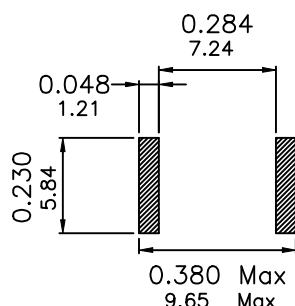
## XF25060B SERIES INDUCTORS

- STANDARD 1.65mm. ON-BOARD HEIGHT
- TRUE SURFACE MOUNT DESIGN
- TAPE & REEL PACKAGING STANDARD
- CUSTOM DESIGNS AVAILABLE AT NO EXTRA CHARGE
- ECONOMICAL LOW COST SOLUTION FOR ALL OF YOUR POWER NEEDS
- OPERATING RANGE FROM -40°C TO 85°C

### Mechanical Dimensions:

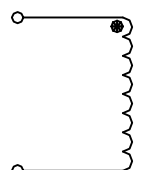


(BOTTOM VIEW)



(SUGGESTED MOUNTING PAD)

### Schematic:



UNLESS OTHERWISE SPECIFIED  
TOLERANCES:  
.xxx ±0.010 / 0.25  
Dimensions in INCH/MM

| PART NUMBER  | INDUCTANCE <sup>1</sup><br>( $\mu\text{H} \pm 20\%$ ) | DCR Max.<br>(Ohms) | SRF Typ.<br>(MHz) | ISAT <sup>2</sup><br>(A) | IRMS <sup>3</sup><br>(A Rms) |
|--------------|---|--------------------|-------------------|--------------------------|------------------------------|
| XF25060B-472 | 4.7   | 0.145              | 90                | 1.60                     | 1.90                         |
| XF25060B-682 | 6.8   | 0.165              | 75                | 1.30                     | 1.70                         |
| XF25060B-103 | 10  | 0.240              | 60                | 1.00                     | 1.50                         |
| XF25060B-153 | 15  | 0.300              | 45                | 0.90                     | 1.30                         |
| XF25060B-223 | 22  | 0.420              | 35                | 0.70                     | 1.00                         |
| XF25060B-333 | 33  | 0.550              | 30                | 0.60                     | 0.90                         |
| XF25060B-473 | 47  | 0.765              | 22                | 0.50                     | 0.70                         |
| XF25060B-683 | 68  | 1.10               | 20                | 0.40                     | 0.60                         |
| XF25060B-104 | 100   | 1.60               | 15                | 0.30                     | 0.50                         |
| XF25060B-154 | 150   | 2.50               | 12                | 0.25                     | 0.40                         |
| XF25060B-224 | 220   | 3.65               | 10                | 0.22                     | 0.32                         |
| XF25060B-334 | 330   | 4.65               | 8.0               | 0.18                     | 0.28                         |
| XF25060B-474 | 470   | 6.75               | 6.5               | 0.14                     | 0.24                         |
| XF25060B-684 | 680   | 9.15               | 5.5               | 0.12                     | 0.20                         |
| XF25060B-105 | 1000  | 14.20              | 4.5               | 0.10                     | 0.16                         |

For environmental data see "Product Specifications" (Document 164)

1. Tested @ 100KHz, 0.1 Vrms.
2. Inductance drop=10% typ. at rated Isat.
3.  $\Delta T=40^\circ\text{C}$  rise typ. at Irms.
4. Operating temperature range -40°C to +85°C.
5. Electrical Specifications at 25°C.