

**PLEASE CHECK WWW.MOLEX.COM FOR LATEST PART INFORMATION**

**Part Number:** [0853490006](#)  
**Status:** **Active**  
**Description:** EMILY™ Signal Board Connector

**Documents:**

[3D Model](#) [RoHS Certificate of Compliance \(PDF\)](#)  
[Drawing \(PDF\)](#)

**General**

|                |   |
|----------------|---|
| Product Family | I/O Connectors  |
| Series         | 85349   |
| Application    | Wire-to-Board   |
| Comments       | 150 parts per reel (primary pack) 5 reels per carton, latching system to front panel on cable connector |
| Component Type | Receptacle  |
| Product Name   | EMILY™  |
| Type           | N/A   |

**Physical**

|                                |                                |
|--------------------------------|--------------------------------|
| Boot Color                     | N/A                            |
| Circuits (Loaded)              | 12                             |
| Circuits (maximum)             | 12                             |
| Circuits Detail                | 12 signal contacts             |
| Color - Resin                  | Black                          |
| Gender                         | Male                           |
| Lock to Mating Part            | None                           |
| Material - Metal               | Copper-Nickel-Zinc             |
| Material - Plating Mating      | Gold                           |
| Material - Plating Termination | Tin                            |
| Material - Resin               | High Temperature Thermoplastic |
| Number of Rows                 | 2                              |
| Orientation                    | Right Angle                    |
| PCB Locator                    | Yes                            |
| PCB Retention                  | Yes                            |
| Packaging Type                 | Embossed Tape on Reel          |
| Panel Mount                    | Yes                            |
| Pitch - Mating Interface (in)  | 0.079 In                       |
| Pitch - Mating Interface (mm)  | 2.00 mm                        |
| Pitch - Term. Interface (in)   | 0.079 In                       |
| Pitch - Term. Interface (mm)   | 2.00 mm                        |
| Plating min: Mating (µin)      | 50.8                           |
| Plating min: Mating (µm)       | 1.27                           |
| Plating min: Termination (µin) | 120                            |
| Plating min: Termination (µm)  | 3                              |
| Polarized to Mating Part       | Yes                            |
| Polarized to PCB               | Yes                            |
| Ports                          | 1                              |
| Surface Mount Compatible (SMC) | Yes                            |
| Termination Interface: Style   | Surface Mount                  |
| Waterproof / Dustproof         | No                             |
| Wire Size AWG                  | N/A                            |

**Electrical**

|                               |         |
|-------------------------------|---------|
| Current - Maximum per Contact | 0.5A    |
| Grounding to Panel            | Drop-In |
| Shielded                      | No      |



Series

image - Reference only

**EU RoHS**

**ELV and RoHS Compliant**  
**REACH SVHC Contains SVHC: No**  
**Halogen-Free Status**

**China RoHS**



**Not Reviewed**

**Need more information on product environmental compliance?**

Email [productcompliance@molex.com](mailto:productcompliance@molex.com)  
 For a multiple part number RoHS Certificate of Compliance, [click here](#)

Please visit the [Contact Us](#) section for any non-product compliance questions.

**Search Parts in this Series**

[85349Series](#)

**Mates With**

[85372](#)

**Use With**

[85372](#)

**Solder Process Data**

|  |                           |
|--|---------------------------|
| Duration at Max. Process Temperature (seconds) | 3                         |
| Lead-free Process Capability                   | Reflow Capable (SMT only) |
| Max. Cycles at Max. Process Temperature        | 1                         |
| Process Temperature max. C                     | 260                       |

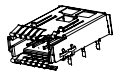
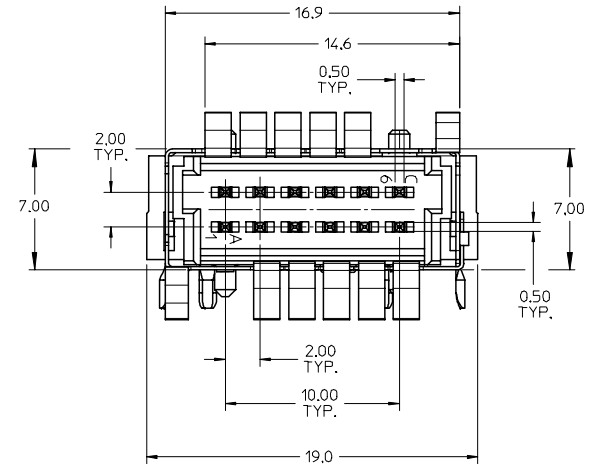
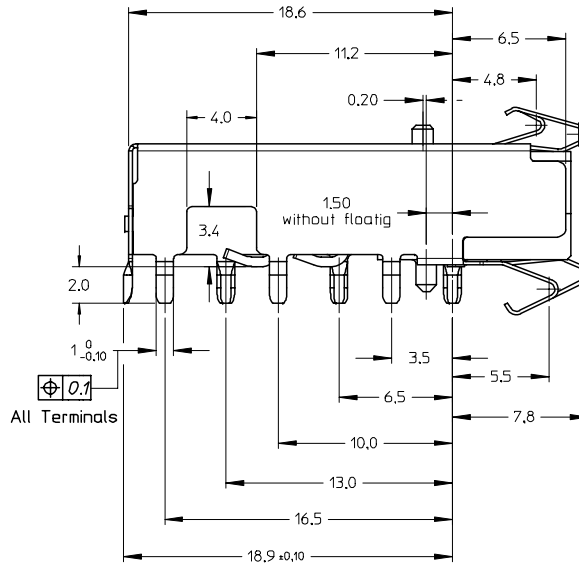
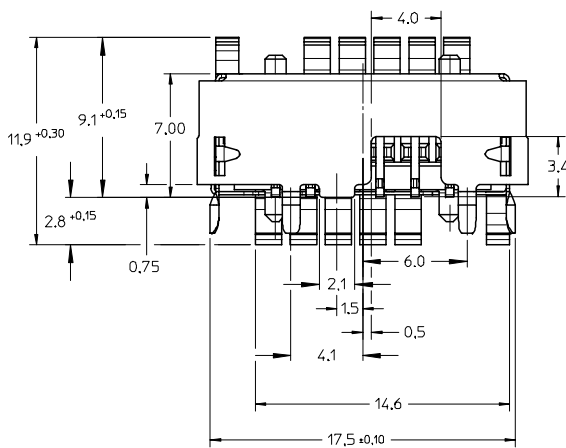
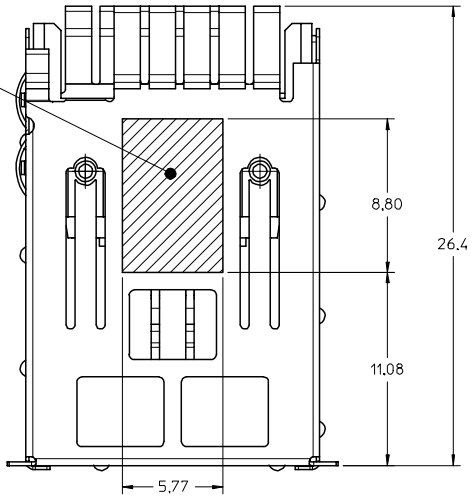
**Material Info****Reference - Drawing Numbers**

|                         |              |
|-------------------------|--------------|
| Packaging Specification | PK-85349-004 |
| Sales Drawing           | SD-85349-102 |

This document was generated on 05/25/2010

**PLEASE CHECK [WWW.MOLEX.COM](http://WWW.MOLEX.COM) FOR LATEST PART INFORMATION**

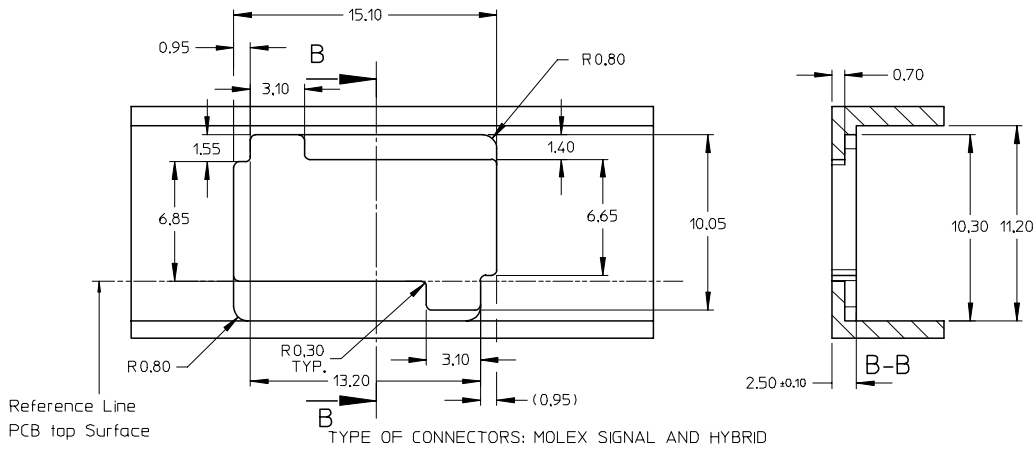
PICK-AND-PLACE-PAD



SCALE 1:1

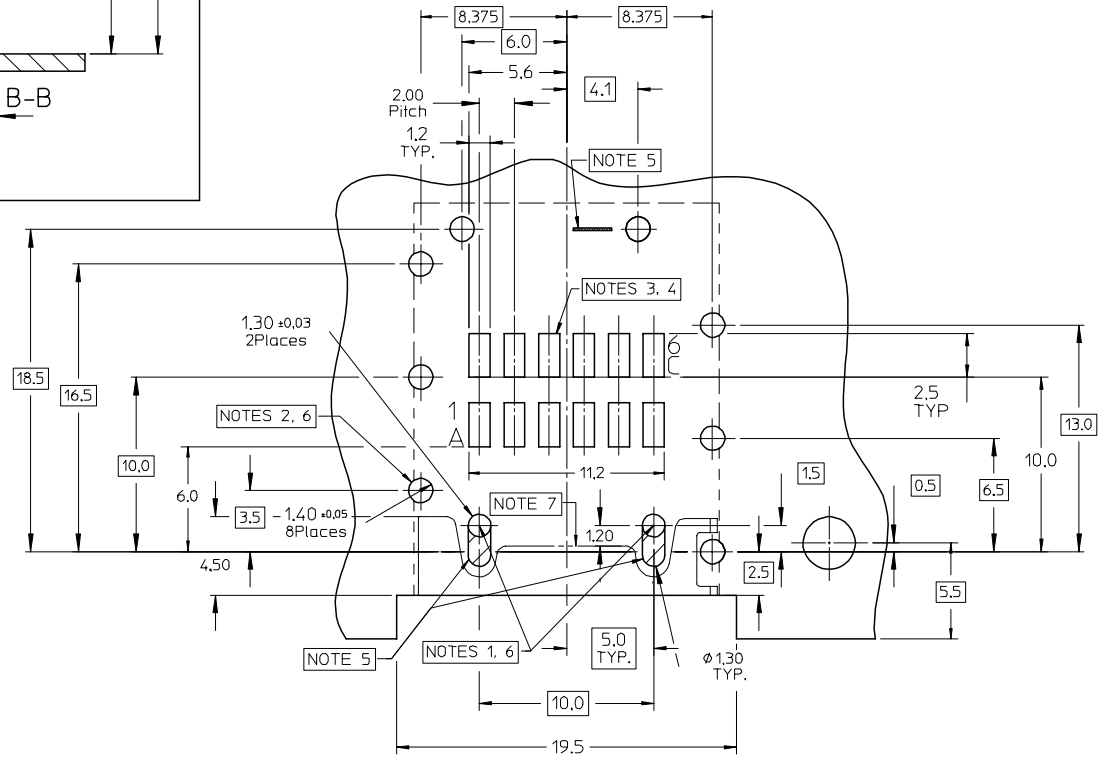
| EC NO: MG2005-0367<br>DRAWN BY: MARTIN 2005/05/03<br>CHECKED BY: CARABET 2005/05/04<br>APPROVED BY: KNOLLER 2005/05/13<br>REV 7 | QUALITY SYMBOLS<br>▽=0<br>▽=0 | GENERAL TOLERANCES (UNLESS SPECIFIED)<br><table border="1"> <thead> <tr> <th></th> <th>mm</th> <th>INCH</th> </tr> </thead> <tbody> <tr> <td>4 PLACES</td> <td>± ---</td> <td>± ---</td> </tr> <tr> <td>3 PLACES</td> <td>± ---</td> <td>± ---</td> </tr> <tr> <td>2 PLACES</td> <td>± ---</td> <td>± ---</td> </tr> <tr> <td>1 PLACE</td> <td>± ---</td> <td>± ---</td> </tr> <tr> <td colspan="3">ANGULAR ± --- °</td> </tr> </tbody> </table> |  | mm                         | INCH | 4 PLACES | ± --- | ± --- | 3 PLACES | ± --- | ± --- | 2 PLACES | ± --- | ± --- | 1 PLACE | ± --- | ± --- | ANGULAR ± --- ° |  |  | DIMENSION STYLE<br><b>MM ONLY</b> | SCALE<br><b>1:1</b> | DESIGN UNITS<br><b>METRIC</b> | THIRD ANGLE PROJECTION |
|---|-------------------------------|--|--|----------------------------|------|----------|-------|-------|----------|-------|-------|----------|-------|-------|---------|-------|-------|-----------------|--|--|-----------------------------------|---------------------|-------------------------------|------------------------|
|   |                               | mm   | INCH   |                            |      |          |       |       |          |       |       |          |       |       |         |       |       |                 |  |  |                                   |                     |                               |                        |
|   | 4 PLACES                      | ± ---  | ± ---  |                            |      |          |       |       |          |       |       |          |       |       |         |       |       |                 |  |  |                                   |                     |                               |                        |
|   | 3 PLACES                      | ± ---  | ± ---  |                            |      |          |       |       |          |       |       |          |       |       |         |       |       |                 |  |  |                                   |                     |                               |                        |
| 2 PLACES  | ± ---                         | ± ---  |  |                            |      |          |       |       |          |       |       |          |       |       |         |       |       |                 |  |  |                                   |                     |                               |                        |
| 1 PLACE   | ± ---                         | ± ---  |  |                            |      |          |       |       |          |       |       |          |       |       |         |       |       |                 |  |  |                                   |                     |                               |                        |
| ANGULAR ± --- °   |                               |  |  |                            |      |          |       |       |          |       |       |          |       |       |         |       |       |                 |  |  |                                   |                     |                               |                        |
| DRAFT WHERE APPLICABLE<br>MUST REMAIN<br>WITHIN DIMENSIONS  | DRAWN BY<br>RKUBATIN          | DATE<br>02/06/06   | TITLE<br><b>EMILY SIGNAL PCB<br/>         PIN CONNECTOR<br/>         ASSEMBLY + BIHLER SHILD</b> |                            |      |          |       |       |          |       |       |          |       |       |         |       |       |                 |  |  |                                   |                     |                               |                        |
| MATERIAL NO.<br><b>85349-0006</b>   | CHECKED BY<br>FCARABET        | DATE<br>02/06/06   | MOLEX INCORPORATED   |                            |      |          |       |       |          |       |       |          |       |       |         |       |       |                 |  |  |                                   |                     |                               |                        |
| SIZE<br><b>A2</b>   | APPROVED BY<br>KNOLLER        | DATE<br>02/06/06   | DOCUMENT NO.<br><b>SD-85349-102</b>  | SHEET NO.<br><b>1 OF 3</b> |      |          |       |       |          |       |       |          |       |       |         |       |       |                 |  |  |                                   |                     |                               |                        |

FRONTTYPE



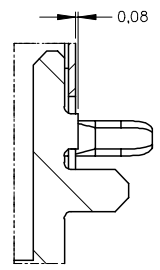
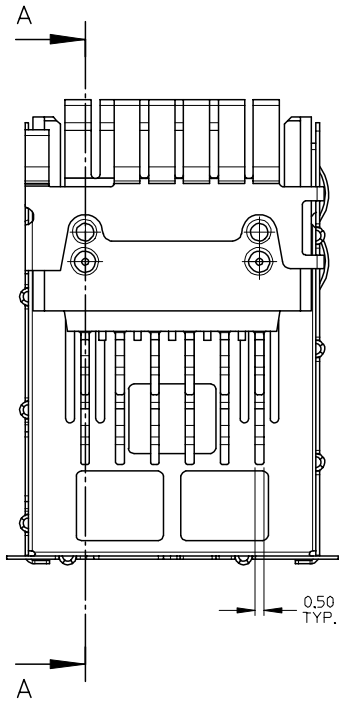
Reference Line  
PCB top Surface

TYPE OF CONNECTORS: MOLEX SIGNAL AND HYBRID

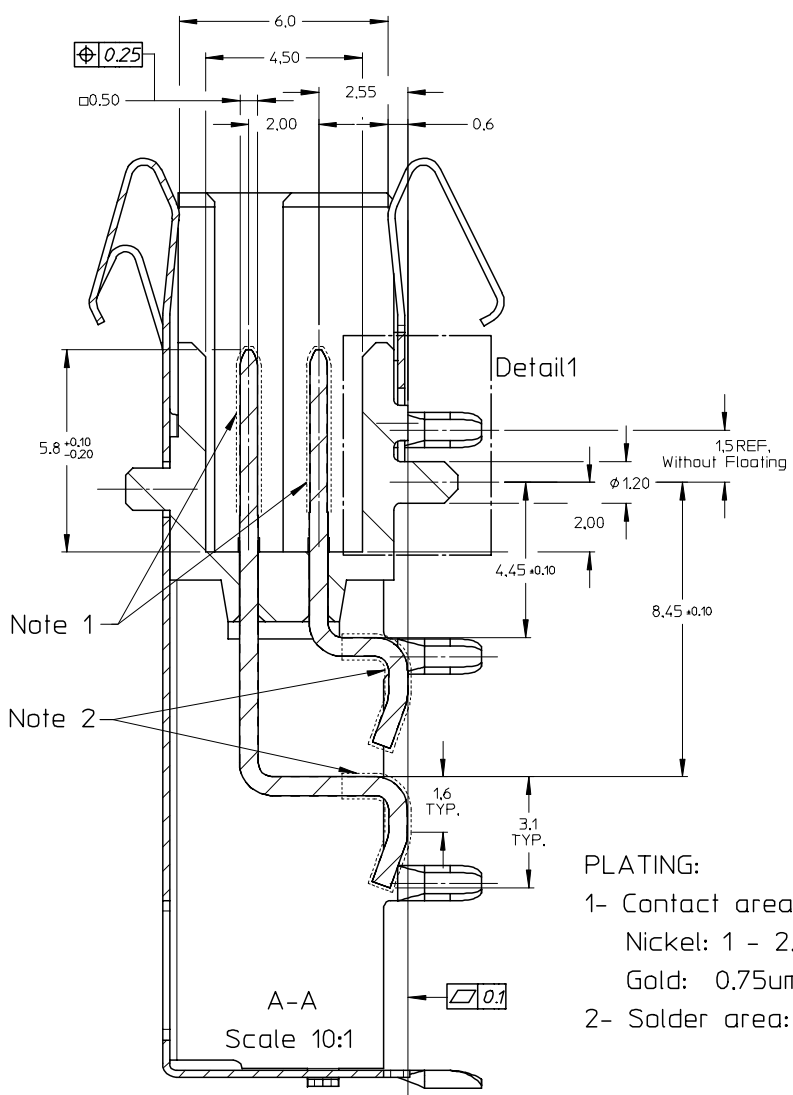


- NOTE
- 1- 2x LOCATION HOLES NOT PLATED
  - 2- 8x PIN HOLES FOR SHIELD PLATED THROUGH
  - 3- 12x PADS FOR SIGNAL CONTACTS
  - 4- PAD DIMENSIONS ARE MINIMUM NEEDED  
PAD SIZE W/O SOLDER TECHNIQUE INCREASE
  - 5- KEEP OFF AREA FOR SOLDER PASTE AND  
SOLDERSTOPMARK FOR DISTANCE PINS  
AT HOUSING AND SHIELD
  - 6- ALL HOLES  $\phi 0.7$
  - 7- LOWER BAR AREA (SHIELD)

|   |                               |  |            |  |                  |                        |                              |   |  |
|---|-------------------------------|--|------------|--|------------------|------------------------|------------------------------|---|--|
| EC NO: MG2005-0367<br>7<br>DRAWN BY: MARTIN<br>CHK'D BY: CARABET<br>APPR: KNOLLER<br>2005/05/03<br>2005/05/04<br>2005/05/13 | QUALITY SYMBOLS<br>▽=0<br>▽=0 | GENERAL TOLERANCES (UNLESS SPECIFIED)  |            | DIMENSION STYLE<br>MM ONLY   |                  | SCALE<br>1:1           | DESIGN UNITS<br>METRIC       | THIRD ANGLE PROJECTION  |  |
|   |                               | 4 PLACES ± --- ± ---<br>3 PLACES ± --- ± ---<br>2 PLACES ± --- ± ---<br>1 PLACE ± --- ± ---<br>ANGULAR ± --- ° | mm<br>INCH | DRAWN BY<br>RKUBATIN   | DATE<br>02/06/06 | CHECKED BY<br>FCARABET | DATE<br>02/06/06             | TITLE<br>EMILY SIGNAL PCB<br>PIN CONNECTOR<br>ASSEMBLY + BIHLER SHILD |  |
| DRAFT WHERE APPLICABLE<br>MUST REMAIN<br>WITHIN DIMENSIONS  |                               | MATERIAL NO.<br>85349-0006   |            | APPROVED BY<br>KNOLLER   |                  | DATE<br>02/06/06       | DOCUMENT NO.<br>SD-85349-102 |   |  |
|   |                               | SIZE<br>A2   |            | THIS DRAWING CONTAINS INFORMATION THAT IS PROPRIETARY TO MOLEX<br>INCORPORATED AND SHOULD NOT BE USED WITHOUT WRITTEN PERMISSION |                  |                        | SHEET NO.<br>2 OF 3          |   |  |



Detail1



PLATING:  
 1- Contact area: Gold over Nickel  
     Nickel: 1 - 2.5 um  
     Gold: 0.75um  
 2- Solder area: TIN 3 - 5 um

|  |                          |   |   |              |  |                        |
|--|--------------------------|---|---|--------------|--|------------------------|
| EC NO: MG2005-0367<br>DRAWN BY: MARTIN 2005/05/03<br>CHECKED BY: CARABET 2005/05/04<br>APPROVED BY: KNOLLER 2005/05/13<br>REV: 7 | QUALITY SYMBOLS          | GENERAL TOLERANCES (UNLESS SPECIFIED)   | DIMENSION STYLE   | SCALE        | DESIGN UNITS   | THIRD ANGLE PROJECTION |
|  | $\nabla=0$<br>$\nabla=0$ | mm INCH<br>4 PLACES ± --- ± ---<br>3 PLACES ± --- ± ---<br>2 PLACES ± --- ± ---<br>1 PLACE ± --- ± ---<br>ANGULAR ± --- ° | MM ONLY   | 1:1          | METRIC   |                        |
|  | DESCRIPTION              | DRAFT WHERE APPLICABLE MUST REMAIN WITHIN DIMENSIONS  | MATERIAL NO.  | DOCUMENT NO. | EMILY SIGNAL PCB<br>PIN CONNECTOR<br>ASSEMBLY + BIHLER SHILD<br>MOLEX INCORPORATED |                        |
|  |                          | SIZE A2   | 85349-0006  | SD-85349-102 | SHEET NO.<br>3 OF 3  |                        |
|  |                          |   | THIS DRAWING CONTAINS INFORMATION THAT IS PROPRIETARY TO MOLEX INCORPORATED AND SHOULD NOT BE USED WITHOUT WRITTEN PERMISSION |              |  |                        |