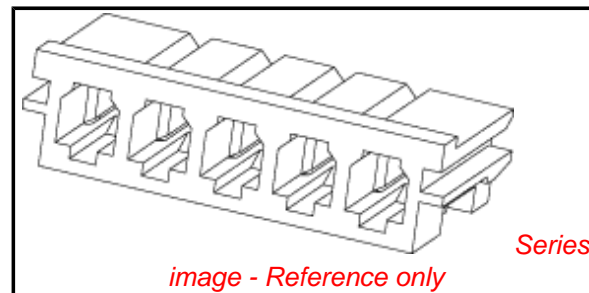


PLEASE CHECK WWW.MOLEX.COM FOR LATEST PART INFORMATION

Part Number: [0672590300](#)
Status: **Active**
Description: 2.50mm (.098") Wire-to-Board Crimp Housing, 3 Circuits
Replacement Part Number: 48103

Documents:

[Drawing \(PDF\)](#) [RoHS Certificate of Compliance \(PDF\)](#)



General

Product Family	Crimp Housings
Series	67259
Obsolete Date	2003/01/01
Product Name	N/A
Replacement Part Number	48103

Physical

Circuits (maximum)	3
Gender	Female
Glow-Wire Compliant	No
Number of Rows	1
Packaging Type	Bag
Panel Mount	No
Pitch - Mating Interface (in)	0.098 In
Pitch - Mating Interface (mm)	2.50 mm
Stackable	No
Temperature Range - Operating	-20°C to +85°C

Material Info

Reference - Drawing Numbers

Product Specification	RPS-67259-005
-----------------------	---------------

EU RoHS

ELV and RoHS Compliant
REACH SVHC Not Reviewed
Halogen-Free Status Not Reviewed

China RoHS



Need more information on product environmental compliance?

Email productcompliance@molex.com
 For a multiple part number RoHS Certificate of Compliance, [click here](#)

Please visit the [Contact Us](#) section for any non-product compliance questions.

Search Parts in this Series

[67259Series](#)

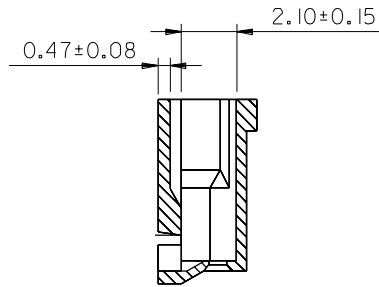
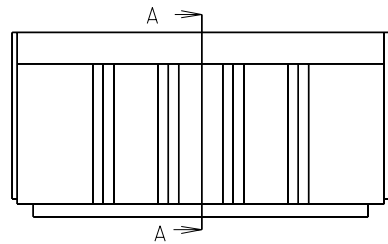
Mates With

[67279](#)

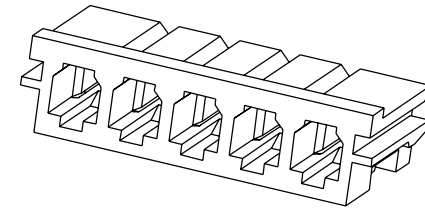
Use With

[67260](#)

8 7 6 5 4 3 2 1

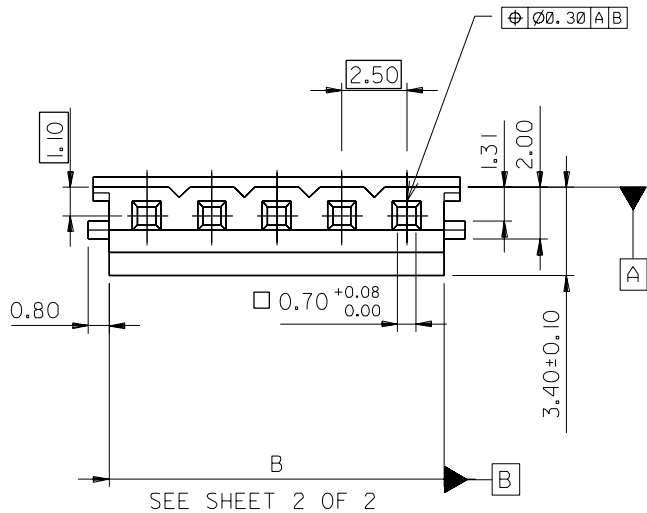


SECTION A-A

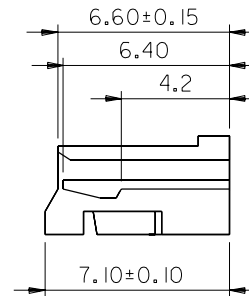


NOTES:

1. MATERIAL: NYLON, UL94V-0
COLOR: WHITE
2. APPLICABLE TERMINAL 67260
3. PRODUCT SPEC.: PS-67259-003.



SEE SHEET 2 OF 2



2	D
1	D
SHT	REV
REVISE ON CAD ONLY	

CHANGE DIMENSION EC NO. T2002-0039 DRWN: LZHAO 01/08/28 CHK: APPR:	UPDATE TITLE DESCRIPTION EC NO. T2001-0009 DRWN: GRACE LEU 00/08/28 CHK: EMILY HSU APPR: MEGA LIN	R.T.M. EC NO. T2000-0193 DRWN: G.WANG 00/03/13 CHK: WILSON CHANG APPR: MEGA LIN	NEW RELEASE EC NO. T2000-0043 DRWN: SAM HUANG 99/09/25 CHK: WILSON CHANG APPR: MEGA LIN	QUALITY SYMBOLS	GENERAL TOLERANCES: (UNLESS SPECIFIED)		SCALE 5:1	DESIGN UNITS <input checked="" type="checkbox"/> mm <input type="checkbox"/> INCH	THIRD ANGLE PROJECTION	DIMENSIONS: <input type="checkbox"/> mm <input type="checkbox"/> INCH <input type="checkbox"/> mm ONLY			
				MAJOR = 0	mm	INCH	DRAWN BY & DATE SAM HUANG 99/09/25	TITLE: 2.50 MM PITCH WIRE TO BOARD, HOUSING	REVISE ON CAD ONLY				
D	C	B	A	CRITICAL = 0	4 PLACES ± .	± .	CHECKED BY & DATE WILSON CHANG		APPROVED BY & DATE MEGA LIN				
				ANGULAR: ±2°	3 PLACES ± .	± .	CAD FILENAME S672590.I.S01		MATERIAL NO. SEE CHART	DRAWING NO. SD-67259-001	SHEET NO. 1 OF 2		
REV DESCRIPTION					DRAFT WHERE APPLICABLE MUST REMAIN WITHIN DIMENSIONS			THIS DRAWING CONTAINS INFORMATION THAT IS PROPRIETARY TO MOLEX INCORPORATED AND SHOULD NOT BE USED WITHOUT WRITTEN PERMISSION.					SIZE A3

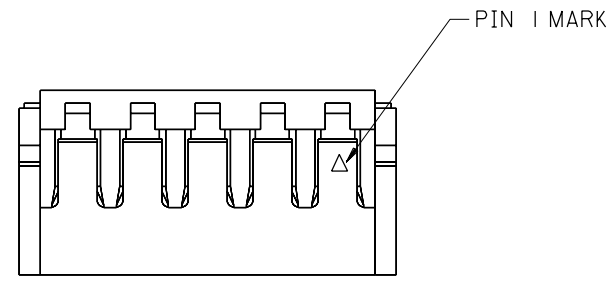
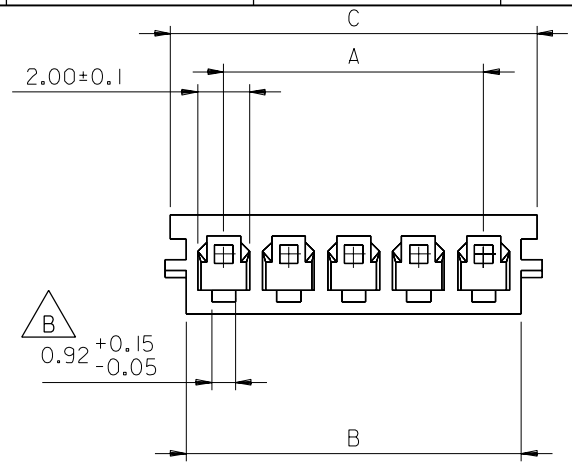
DO NOT SCALE DRAWING

CADFILE NO.S6725901.S02 SIMILAR ITEM

EDP NO.

ENG. NOSD-67259-**-00

8 7 6 5 4 3 2 1



CIRCUITS	A	B	C	CIRCUITS	A	B	C
2	2.5±0.15	5.4±0.20	6.6±0.20	9	20.0±0.15	22.9±0.20	24.1±0.20
3	5.0±0.15	7.9±0.20	9.1±0.20	10	22.5±0.15	25.4 ^{+0.20} _{-0.30}	26.6 ^{+0.20} _{-0.30}
4	7.5±0.15	10.4±0.20	11.6±0.20	11	25.0±0.15	27.9 ^{+0.20} _{-0.30}	29.1 ^{+0.20} _{-0.30}
5	10.0±0.15	12.9±0.20	14.1±0.20	12	27.5±0.15	30.4 ^{+0.20} _{-0.30}	31.6 ^{+0.20} _{-0.30}
6	12.5±0.15	15.4±0.20	16.6±0.20	13	30.0±0.15	32.9 ^{+0.20} _{-0.30}	34.1 ^{+0.20} _{-0.30}
7	15.0±0.15	17.9±0.20	19.1±0.20	14	32.5±0.15	35.4 ^{+0.20} _{-0.30}	36.6 ^{+0.20} _{-0.30}
8	17.5±0.15	20.4±0.20	21.6±0.20	15	35.0±0.15	37.9 ^{+0.20} _{-0.30}	39.1 ^{+0.20} _{-0.30}

MATERIAL NO.
67259-**-00

PIN NUMBER:
02 ... 15

CHANGE DIMENSION EC NO. T2002-0039 DRWN: LZHAO 01/08/28 CHK: APPR:	UPDATE TITLE DESCRIPTION EC NO. T2001-0009 DRWN: GRACE LEU 00/08/28 CHK: EMILY SHU APPR: MEGA LIN	R.T.M. EC NO. T2000-0183 DRWN: G.Wang 00/03/13 CHK: WILSON CHANG APPR: MEGA LIN	NEW RELEASE EC NO. T2000-0043 DRWN: SAM HUANG 99/09/25 CHK: WILSON CHANG APPR: MEGA LIN
D	C	B	A

DESCRIPTION	QUALITY SYMBOLS
MAJOR	△
CRITICAL	▽
REV	

GENERAL TOLERANCES: (UNLESS SPECIFIED)		SCALE 5:1	DESIGN UNITS <input checked="" type="checkbox"/> mm <input type="checkbox"/> INCH	THIRD ANGLE PROJECTION
4 PLACES	± .	mm	INCH	
3 PLACES	± .			
2 PLACES				
1 PLACE				
ANGULAR: ±2°		DRAWN BY & DATE SAM HUANG 99/09/25		
DRAFT WHERE APPLICABLE MUST REMAIN WITHIN DIMENSIONS		CHECKED BY & DATE WILSON CHANG		
		APPROVED BY & DATE MEGA LIN		
		CAD FILENAME S6725901.S02	MATERIAL NO. SEE CHART	DRAWING NO. SD-67259-001
		THIS DRAWING CONTAINS INFORMATION THAT IS PROPRIETARY TO MOLEX INCORPORATED AND SHOULD NOT BE USED WITHOUT WRITTEN PERMISSION.		SHEET NO. 2 OF 2
				SIZE A3

DIMENSIONS:		SHT	REV
<input type="checkbox"/> mm	<input type="checkbox"/> INCH		
<input type="checkbox"/> mm	<input type="checkbox"/> mm ONLY		
REVISE ON CAD ONLY			
TITLE: 2.50 MM PITCH WIRE TO BOARD, HOUSING △			
Molex MOLEX INCORPORATED			
SHEET NO.		2 OF 2	