

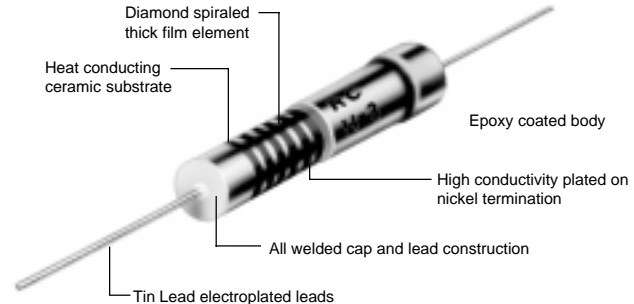
THICK FILM HIGH VOLTAGE/HIGH RELIABILITY MIL-APPROVED METAL GLAZE™ RESISTORS

ISO-9001 Registered



CMH SERIES

- 1/4 watt to 5 watt
- 330K ohm to 1G ohm range
- ±1%, ±2%, or ±5% tolerance
- TCR of ±100 ppm/°C
- Qualified to MIL-R-49462



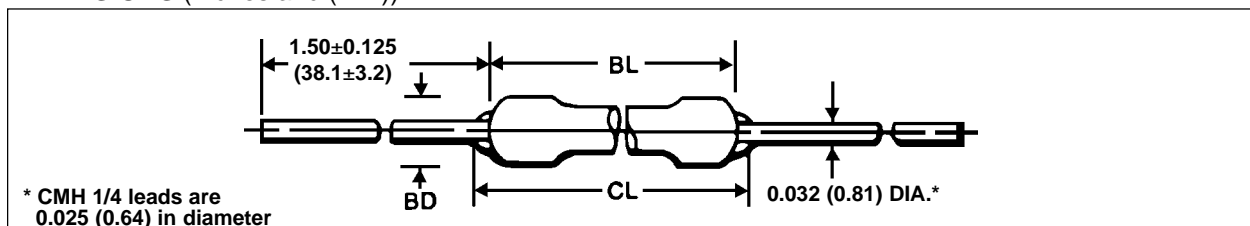
SPECIFICATIONS:

IRC Type	MIL Type ³	Power Rating@ 70°C (watts) ¹	Voltage Rating (volts) ²	Resistance Range (ohms) ⁴	Tolerance (±%)	Maximum TCR (±ppm/°C) ⁴	VCR (ppm/V)
CMH-1/4	RHV30	1/4	750	330K-100M	1, 2, 5	100	0 to -5
CMH-1/2	RHV31	1/2	1,500	330K-392M	1, 2, 5	100	0 to -5
CMH-1	RHV32	1	3,000	330K-499M	1, 2, 5	100	0 to -5
CMH-2	RHV33	2	5,000	330K-499M	1, 2, 5	100	0 to -5
CMH-3	RHV34	3	10,000	330K-1000M	1, 2, 5	100	0 to -5
CMH-5	RHV35	5	20,000	330K-1000M	1, 2, 5	100	0 to -5

NOTES:

1. For power rating above 70°C, see derating curve.
2. Voltage rating shown is the rated DC continuous working voltage or the sine-wave RMS absolute maximum voltage at commercial line frequency.
3. Marked per MIL-R-49462
4. Values greater than 100 meg and less than 500 meg, ±200ppm; values greater than or equal to 500 meg, ±500ppm.

DIMENSIONS (Inches and (mm)):



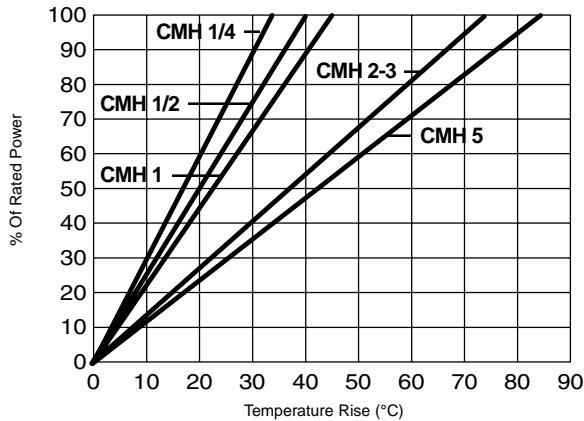
IRC Type	Body Length - BL	Body Diameter - BD	Clean Lead to Clean Lead - CL
CMH-1/4	0.275±0.031 (6.98±0.79)	0.088±0.010 (2.22±0.25)	0.400 (10.16)
CMH-1/2	0.400±0.031 (10.16±0.79)	0.138±0.016 (3.51±0.41)	0.525 (13.34)
CMH-1	0.690±0.062 (17.53±1.57)	0.297±0.031 (7.54±0.79)	0.900 (22.86)
CMH-2	1.062±0.062 (26.97±1.57)	0.297±0.031 (7.54±0.79)	1.250 (31.75)
CMH-3	2.062±0.062 (52.37±1.57)	0.297±0.031 (7.54±0.79)	2.250 (57.15)
CMH-5	3.062±0.062 (77.77±1.57)	0.297±0.031 (7.54±0.79)	3.250 (82.55)

CMH ENVIRONMENTAL PERFORMANCE:

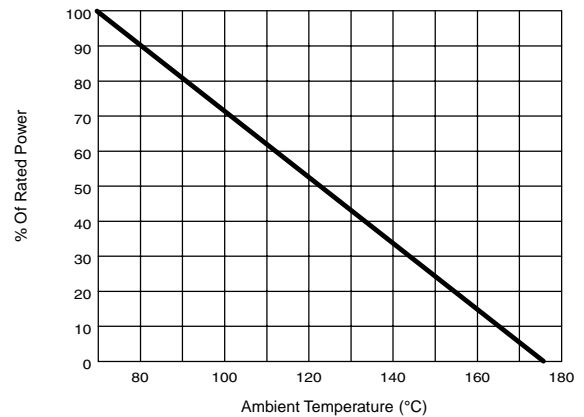
TEST CONDITION*	Maximum ΔR (±3σ)	Typical ΔR
Thermal Shock	±0.25%	±0.10%
Solder Effect	±0.15%	±0.05%
Terminal Strength	±0.20%	±0.10%
Moisture Resistance	±0.50%	±0.20%
Load Life (1000 Hours at 25°C)	±1.00%	±0.25%
Shelf Life (1 year at 25°C)	±0.10%	±0.03%
Low-Temperature Operation	±0.15%	±0.05%
Shock	±0.35%	±0.10%
Vibration	±0.35%	±0.10%
Dielectric Strength	±0.15%	±0.05%
Insulation Resistance at 500 VDC	±10 ⁹ Ω min	5x10 ¹² Ω typ

NOTES:
* Test per MIL-R-49462 and Mil Std-202.

TEMPERATURE RISE:



POWER DERATING:



HOW TO ORDER:

Sample Part No.: **CMH 3 - 100ppm/°C - 2205 (22M) - 1%**

IRC Type _____
CMH 1/4, CMH 1/2, CMH 1, CMH 2, CMH 3, CMH 5

Temperature Coefficient _____
±100 ppm/°C

Resistance _____
Standard MIL values for metal film resistors. See specification chart on back inside cover for range.

Tolerance _____
±1%, ±2%, ±5%